

***Monthly Release of  
Foreign Trade Statistics (FTS)  
December 2016***

Bangladesh Bureau of Statistics (BBS) of Statistics and Informatics Division (SID) compiles and publishes Foreign Trade Statistics (FTS) on a regular basis. This publication presents monthly trend of Bangladesh foreign trade statistics including statistics on top trading partners, essential import commodities, and last twelve months scenario of major export and import goods for December, 2016.

Merchandise trade data of this publication are provided by National Board of Revenue (NBR) and while data on services from Bangladesh Bank. Data presented in this publication are provisional and subject to revision. All these provisional data will be subsequently reviewed and revised. Revised data are being presented in next issues.

In December, 2016, total export and import of goods and services is recorded at increased by Tk. 275.60 and decreased by Tk. 420.26 billion respectively resulting in a trade deficit at goods and services of Tk. 144.66 billion. The growth of export and import in December, 2016 increased by 11.26 and decreased by 4.47 percent respectively comparing to November, 2016 and it is decreased by 4.48 and increased by 10.71 percent respectively comparing to December, 2015.

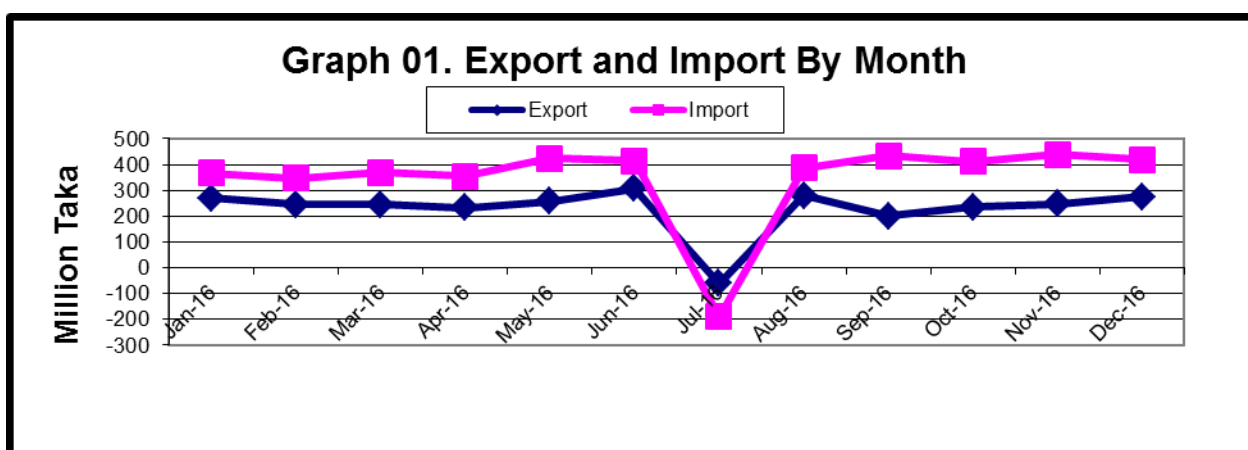
For the three months ending in December, 2016 the moving average of export of goods and services was Tk. 252.94 billion, while the moving average of import of goods and services was Tk. 423.67 billion resulting in an average trade deficit of Tk. 170.73 billion. For the three months ending in November, 2016 the average trade deficit was Tk. 199.76 billion, reflecting average exports of Tk. 228.13 billion and average imports of Tk. 427.89 billion.

Indicators of this publication are expected to provide a good idea about the trend of export and import of the country over the previous months of a year. This monthly release would be a useful document for planners, policy makers, researchers, development partners/agencies, academicians and other stakeholders.

### Table 1: Export, import and trade deficits

(In billion taka)

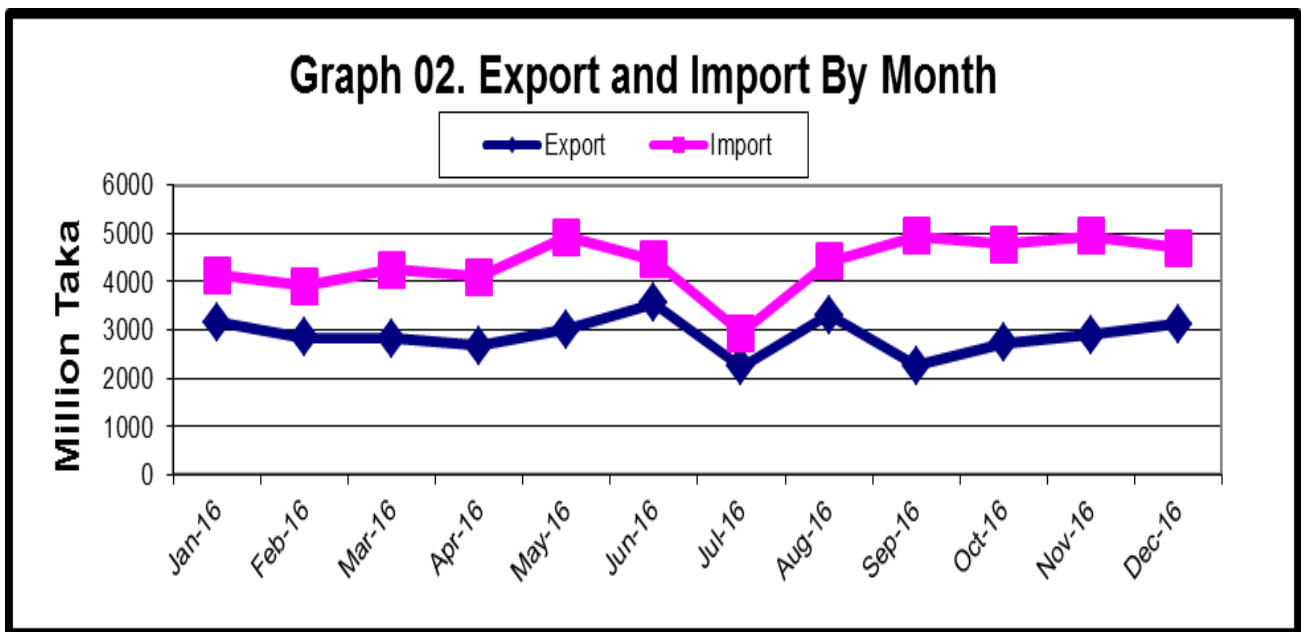
Period	Export			Import			Trade balance		
	Total	Goods	Services	Total	Goods	Services	Total	Goods	Services
<b>2014-15</b>	2637.03	2408.66	411.38	4165.57	3671	593.77	-1528.53	-1262.4	-275.65
<b>2015-16</b>	2898.06	2634.98	263.38	4357.7	3869.35	488.35	-11869.5	-1234.67	-224.97
<b>2016-17</b>									
Jan-16	269.02	248.65	20.37	366.66	322.45	44.21	-97.64	-73.8	-23.84
Feb-16	244.23	223.14	21.09	346.30	305.85	40.45	-102.07	-82.71	-19.36
Mar-16	244.68	220.87	23.81	369.97	332.75	37.22	-125.29	-111.88	-13.41
Apr-16	232.78	209.12	23.66	354.67	319.74	34.93	-121.89	-110.62	-11.27
May-16	257.69	235.85	21.84	425.05	385.23	39.82	-167.36	-149.38	-17.98
Jun-16	305.85	278.87	27.28	414.30	346.49	67.81	-108.45	-67.92	-40.53
July-16	-62.71	197.29	-260	-191.94	267.06	-459	-254.65	-69.77	-199.00
Aug-16	279.01	257.61	21.40	386.82	343.07	43.75	-107.81	-85.46	-22.35
Sep-16	201.17	174.59	26.58	432.92	384.08	48.84	-231.75	-209.49	-22.26
Oct-16	235.52	211.69	23.83	410.83	371.63	39.20	-175.31	-159.94	-15.37
Nov-16	247.71	226.05	21.66	439.91	384.86	55.05	-192.2	-158.81	-33.39
Dec-16	275.6	243.57	32.03	420.26	366.19	54.07	-144.66	-122.62	-22.04



**Table 2: Export, import and trade deficits**

(In million US \$)

Period	Export			Import			Trade balance		
	Total	Goods	Service	Total	Goods	Service	Total	Goods	Service
<b>2014-15</b>	31123	30594	229	47675	47081	594	-16501	-14289	-365
<b>2015-16</b>	33744	33480	264	49668	49182	486	-15924	-15702	-222
<b>2016-17</b>									
Jan-16	3169	3149	20	4128	4084	44	-959	-935	-24
Feb-16	2846	2825	21	3911	3871	40	-1065	-1046	-19
Mar-16	2825	2801	24	4257	4220	37	-1432	-1419	-13
Apr-16	2676	2652	24	4090	4055	35	-1414	-1403	-11
May-16	3013	2991	22	4926	4886	40	-1913	-1895	-18
Jun-16	3560	3533	27	4461	4394	67	-901	-861	-40
July-16	2242	2505	-260	2928	3387	-459	-686	-885	-199
Aug-16	3307	3286	21	4420	4376	44	-1113	-1090	-23
Sep-16	2254	2227	27	4948	4899	49	-2694	-2672	-22
Oct-16	2724	2700	24	4779	4740	39	-2055	-2040	-15
Nov-16	2893	2871	22	4942	4887	55	-2049	-2016	-33
Dec-16	3127	3095	32	4707	4653	54	-1580	-1558	-22

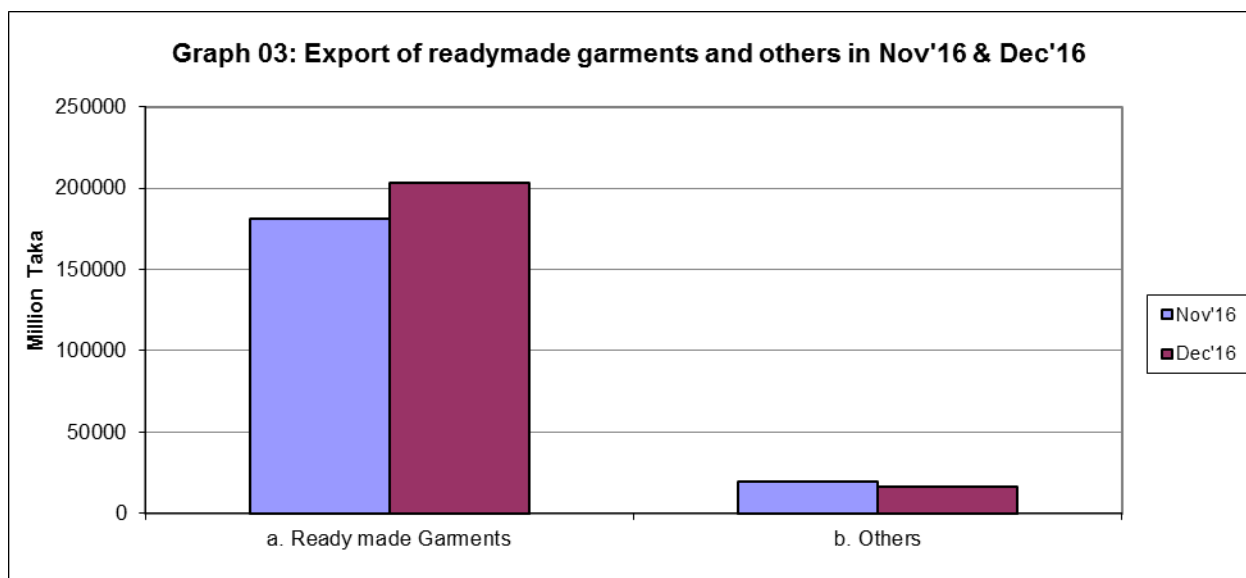


Ta

**Table 3. Percent change from the previous month (goods)**

(In million taka)

Items	2015-16		
	Nov'16	Dec'16	Percent change from the previous month
<b>1. Export (Commodities )</b>	<b>226052</b>	<b>243568</b>	<b>7.75</b>
1. Ready made Garments	181430	203059	11.92
2. Shrimps and prawn	3395	2967	-12.61
3. Vegetable textiles fiber/ yarn	5884	5378	-8.60
4. Made-up textiles articles	6059	7231	19.34
5. Raw hides, skins & leathers	1913	1600	-16.36
6. Raw jute	1456	-	-100.00
7. Footwear Special woven fabrics	4684	5416	15.63
8. Fertilizer	-	-	-
9. Hats and other head gear	1324	1293	-2.34
10. Special woven fabrics	395	349	-11.65
11. Others	19512	16275	-16.59
<b>2. Import (Commodities)</b>	<b>384859</b>	<b>366193</b>	<b>-4.85</b>
1. Machinery & parts	41581	38717	-6.89
2. Petroleum product and oil	49770	43803	-11.99
3. Electric Machinery	22635	17944	-20.72
4. Soya bean and Palm oil	18425	18912	2.64
5. Raw cotton	11256	14395	27.89
6. Textile fabrics	822	864	5.11
7. Iron and steel	17180	19071	11.01
8. Plastics and articles	13921	12849	-7.70
9. Wheat	7394	6523	-11.78
10. Fertilizer	8625	4945	-42.67
11. Others	193250	188170	-2.63
<b>3. Trade balance (1-2)</b>	<b>-158807</b>	<b>-122625</b>	<b>-22.78</b>



**Table 4. Import of Essential Commodities Quantity in M. Ton**

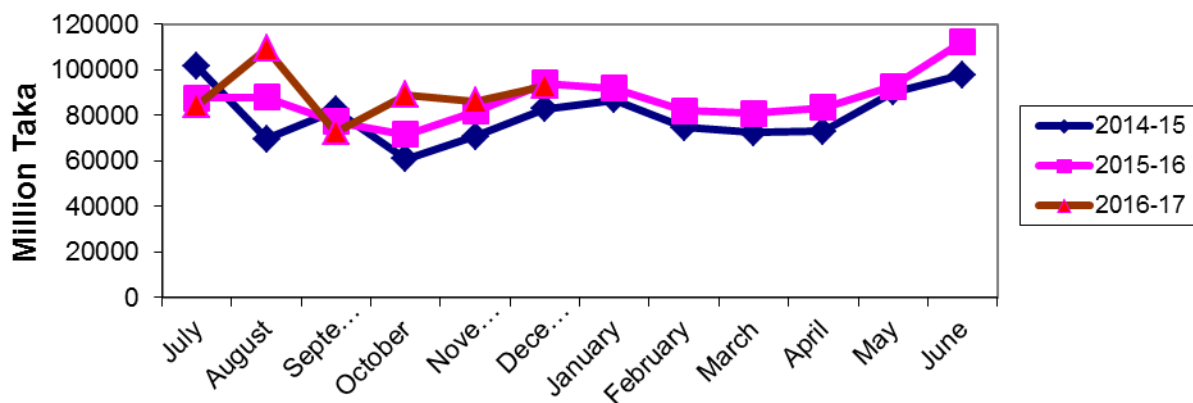
Items	2015-16			
	Nov'16	Dec'16	Percent change from the previous month	Cumulative (Dec -16)
<b>Import (Commodities)</b>				
1. Raw sugar	135269	181490	34.17	316759
2. Palm oil	162931	157807	-3.14	320738
3. Soya bean oil	150113	152421	1.54	302534
4. Milk & Cream	11528	11428	-0.87	22956
5. Ginger	-	-	-	-
6. Chillies	-	-	-	-
7. Wheat	454811	392970	-13.60	847781
8. Rice	3399	7037	107.03	10436
9. Lentil & other	30053	47208	57.08	77261
10. Onion	154833	123437	-20.28	278270
11. Garlic	2830	4123	45.69	6953
12. Tea	666	1197	79.73	1863
13. Oil seed	129640	10110	-92.20	139750

**Table 5: Twelve months export of readymade garments during 2014-15 to 2016-17**

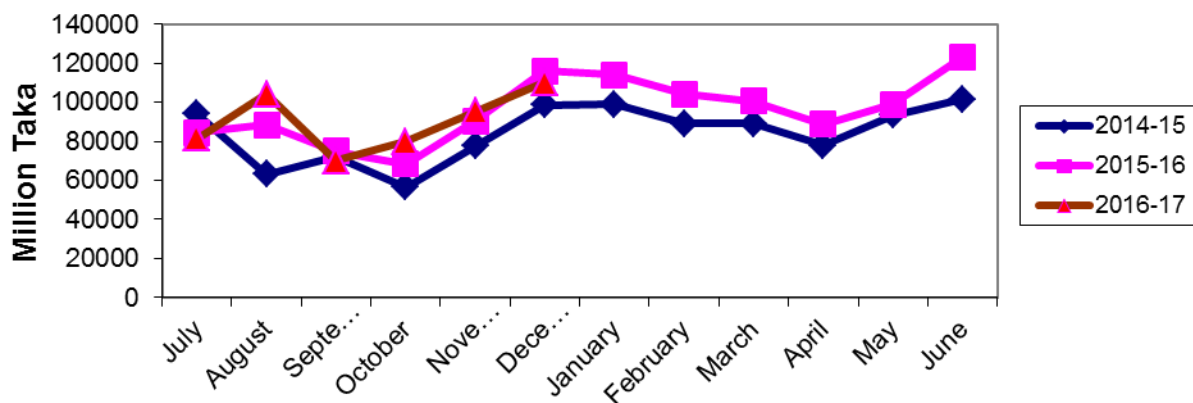
(In million taka)

Month	Ready made Garments (Knitted)			Ready made Garments (Not Knitted)		
	2014-15	2015-16	2016-17	2014-15	2015-16	2016-17
July	101485	87695	84441	93914	84619	81559
August	69664	88007	109411	63171	88567	104325
September	82360	77130	72743	72051	74889	70095
October	60953	71632	88928	56604	68416	80061
November	70801	81761	86220	77444	90519	95210
December	82837	94109	93024	98742	116152	110035
January	86721	91736		99008	114106	
February	74703	81963		89141	104054	
March	72390	80884		88990	100523	
April	73066	83374		77882	88899	
May	90165	92649		93251	99029	
June	97901	112423		101655	123404	

**Graph 04 : Twelve months exports of readymade garment( knitted) .**



**Graph 05 : Twelve months exports of readymade garment(not knitted) .**

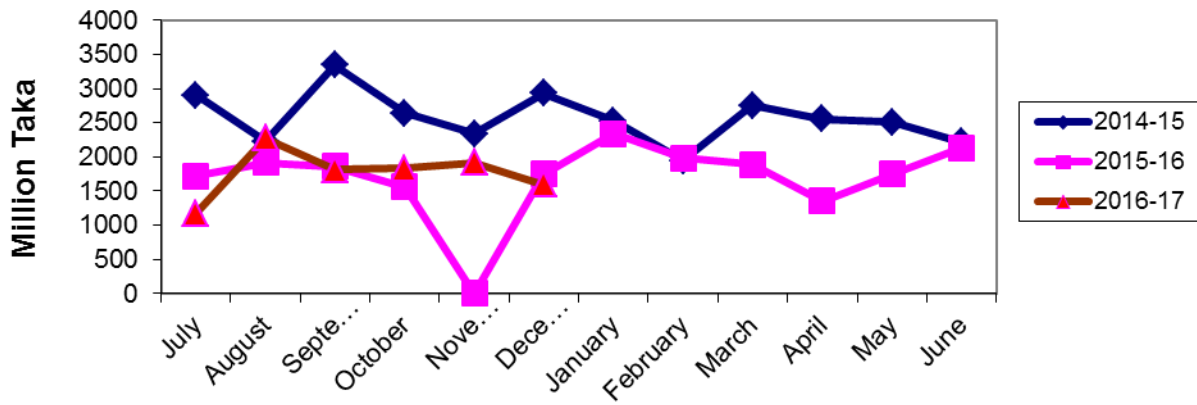


**Table 6: Twelve months export of raw hides, skins & leather, 2014-15 to 2016-17**

(In million taka)

Month	Raw hides, skins & leather		
	2014-15	2015-16	2016-17
July	2899	1722	1173
August	2230	1914	2269
September	3342	1863	1816
October	2637	1560	1836
November	2335	-	1913
December	2930	1747	1601
January	2530	2342	
February	1942	1980	
March	2749	1885	
April	2558	1351	
May	2506	1747	
June	2219	2130	

**Graph 06 : Twelve months exports of raw hides, skins & leather .**

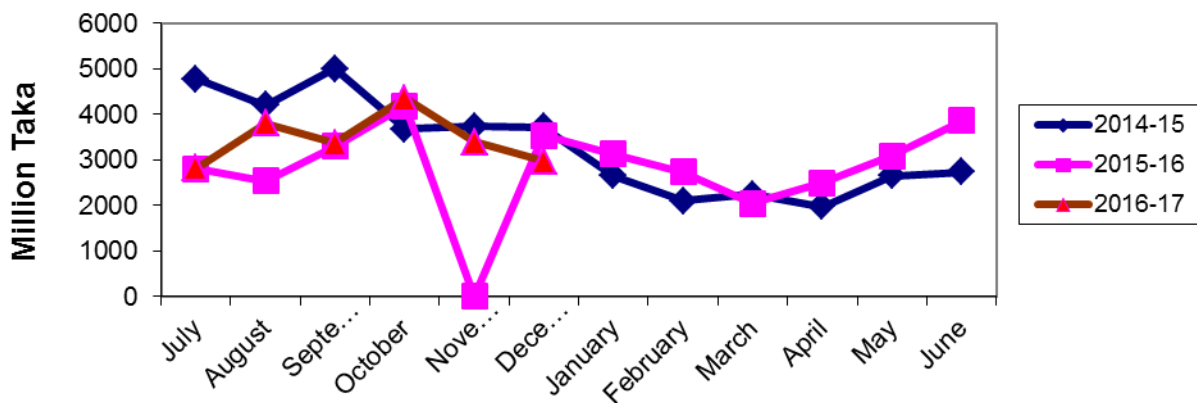


**Table 7: Twelve months export of shrimps and prawn, 2014-15 to 2016-17.**

(In million taka)

Month	Shrimps and prawn		
	2014-15	2015-16	2016-17
July	4774	2807	2818
August	4199	2537	3803
September	4997	3293	3371
October	3674	4186	4357
November	3738	-	3395
December	3723	3537	2967
January	2644	3130	
February	2106	2733	
March	2247	2044	
April	1970	2497	
May	2647	3086	
June	2738	3857	

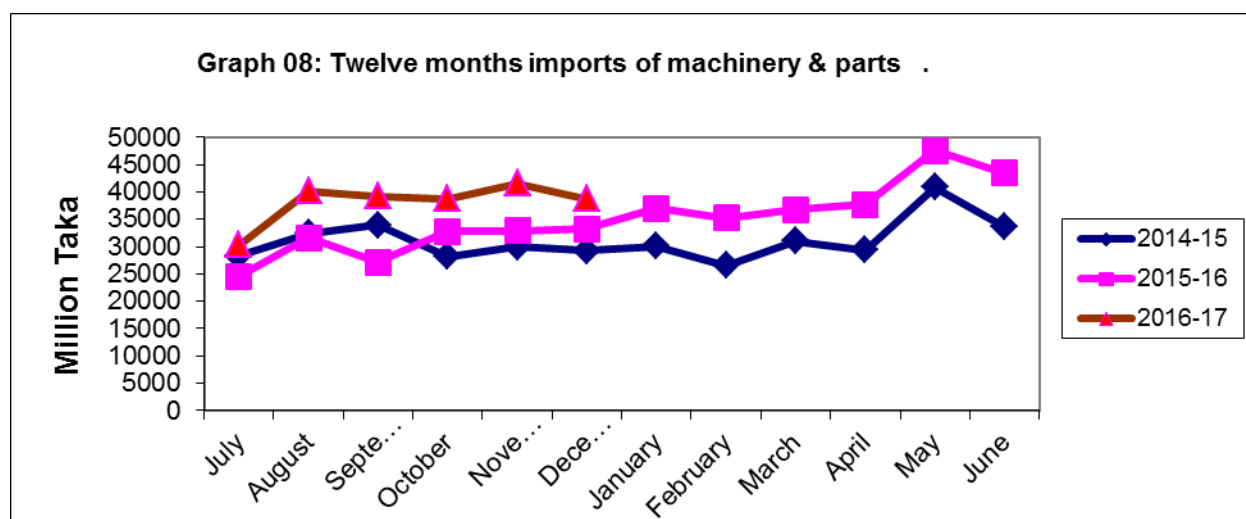
**Graph 07 : Twelve months exports of shrimps & prawn .**



**Table 8: Twelve months import of machinery & parts and electrical machinery during 2014-15 to 2016-17.**

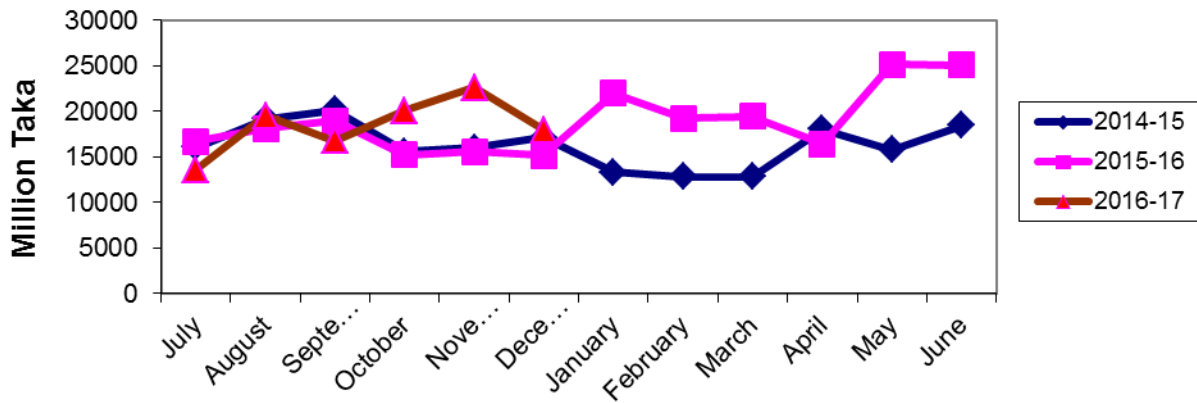
(In million taka)

Month	Machinery & Parts			Electrical Machinery		
	2014-15	2015-16	2016-17	2014-15	2015-16	2016-17
July	28289	24493	30300	16083	16700	13592
August	32463	31591	40158	19161	18123	19538
September	33942	27158	39180	20119	18939	16764
October	28228	32752	38704	15598	15241	20066
November	29911	32918	41581	15966	15545	22635
December	29267	33183	38717	17134	15165	17944
January	30114	36994		13332	21949	
February	26528	35261		12858	19203	
March	31018	36707		12829	19436	
April	29399	37742		18018	16414	
May	40908	47508		15808	25174	
June	33530	43394		18484	25045	





**Graph 09 : Twelve months imports of electrical machinery .**

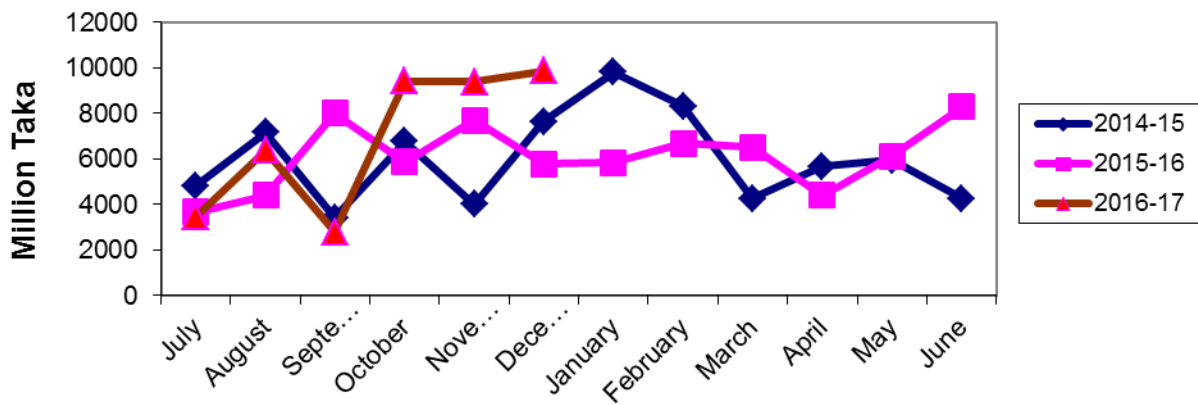


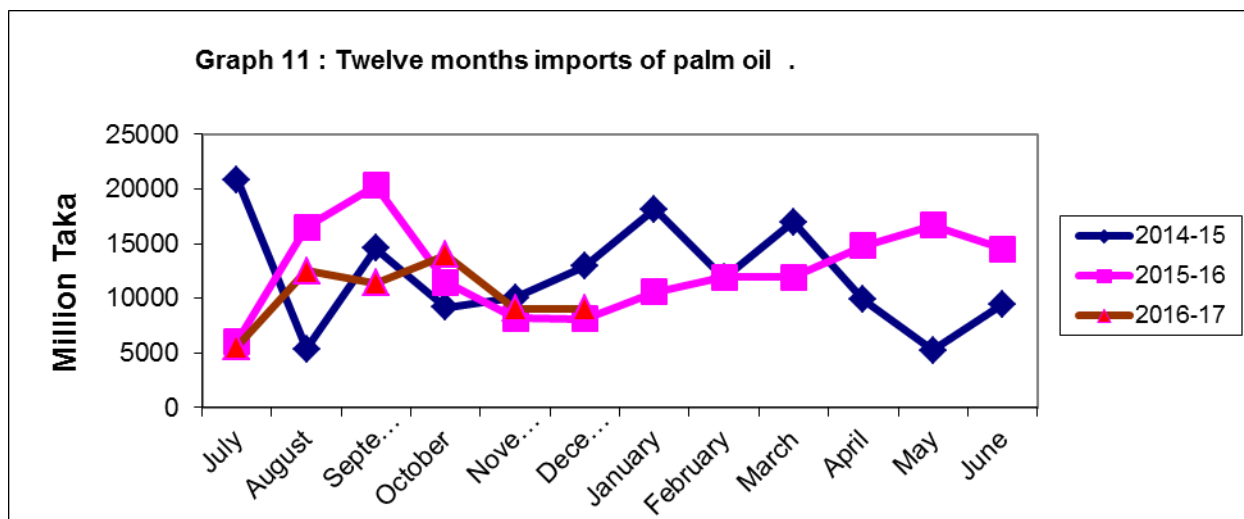
**Table 9: Twelve months imports of Soya bean and Palm oil during 2014-15 to 2016-17**

(In million taka)

Month	Soya bean			Palm Oil		
	2014-15	2015-16	2016-17	2014-15	2015-16	2016-17
July	4812	3653	3456	20866	6040	5598
August	7149	4408	6371	5369	16473	12532
September	3419	7999	2780	14583	20298	11375
October	6757	5855	9417	9185	11479	13955
November	3994	7681	9370	10064	8193	9055
December	7638	5771	9852	12918	8090	9060
January	9814	5824		18128	10559	
February	8311	6686		11874	11909	
March	4271	6518		16990	11947	
April	5674	4396		9897	14811	
May	5946	6107		5211	16688	
June	4253	8271		9450	14474	

**Graph 10 : Twelve months imports of soya bean oil .**



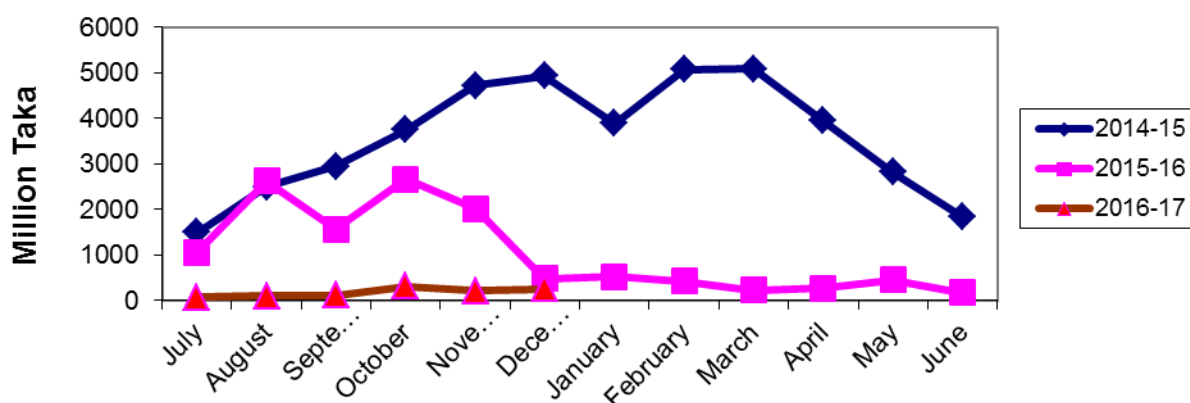


**Table 10: Twelve months import of rice and wheat during 2014-15 to 2016-17**

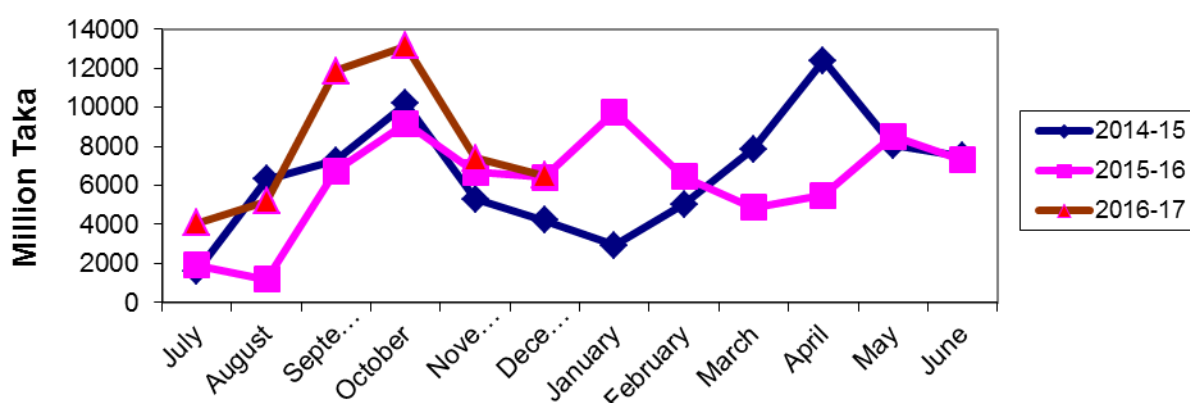
(In million taka)

Month	Rice			Wheat		
	2014-15	2015-16	2016-17	2014-15	2015-16	2016-17
July	1489	1064	76	1611	1905	4068
August	2492	2618	96	6300	1199	5193
September	2939	1560	117	7266	6754	11875
October	3743	2671	310	10175	9186	13138
November	4722	2021	217	5291	6682	7394
December	4932	479	263	4202	6400	6523
January	3887	526		2917	9773	
February	5073	428		5039	6459	
March	5081	233		7865	4853	
April	3949	272		12385	5500	
May	2813	450		8045	8503	
June	1840	167		7494	7310	

**Graph 12 : Twelve months imports of rice .**



**Graph 13 : Twelve months imports of wheat .**

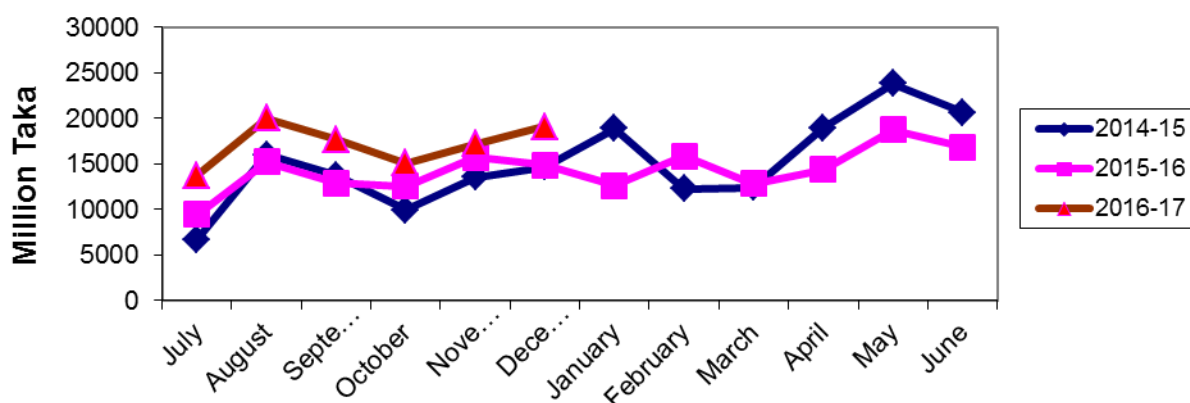


**Table 11: Twelve months import of iron & steel and plastics & articles during 2014-15 to 2016-17**

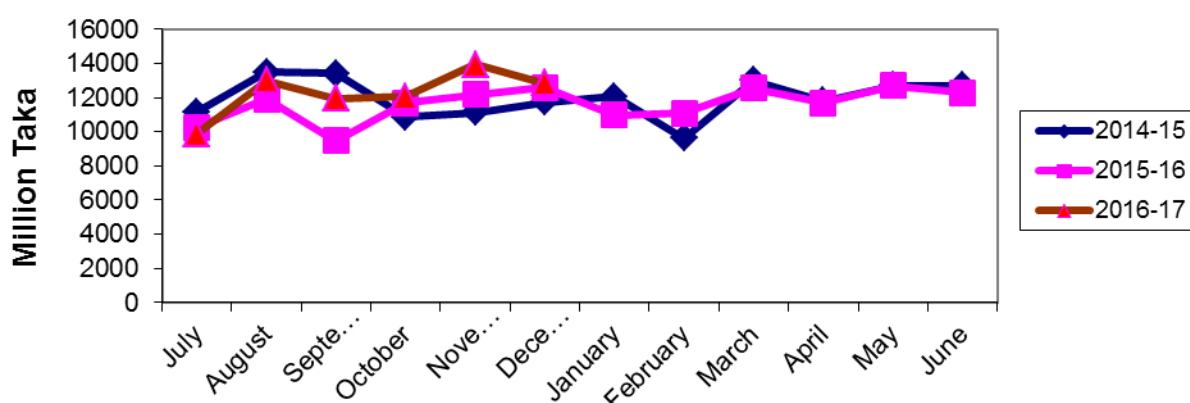
(In million taka)

Month	Iron & Steel			Plastics & articles		
	2014-15	2015-16	2016-17	2014-15	2015-16	2016-17
July	6683	9460	13715	11174	10267	9887
August	16007	15195	20027	13502	11898	12990
September	13734	12910	17657	13403	9483	11929
October	9949	12553	15077	10867	11702	12077
November	13530	15719	17180	11119	12187	13921
December	14663	14862	19071	11716	12600	12849
January	18885	12624		12045	10967	
February	12286	15829		9608	11065	
March	12398	12811		12993	12542	
April	18956	14376		11778	11685	
May	23826	18759		12695	12688	
June	20644	16872		12690	12269	

**Graph 14 : Twelve months imports of iron & steel .**



**Graph 15 : Twelve months imports of plastics & articles .**



**Table 12. Point to point percent change in external trade (goods)**

(In million taka)

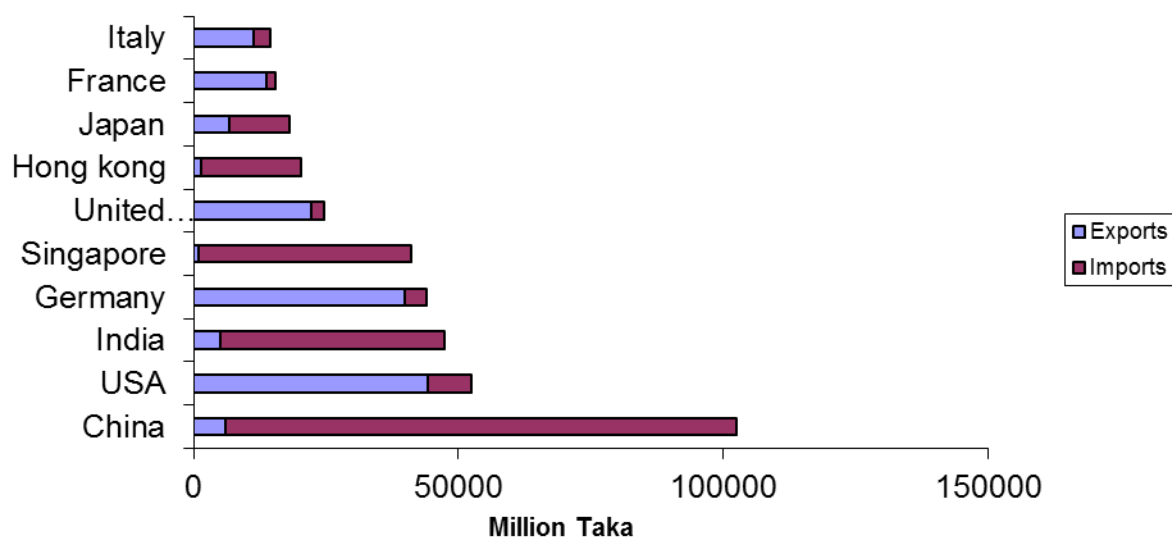
Items	October-December			December		
	2014-15	2015-16	Change in Percent	2014-15	2015-16	Change in Percent
1. Export(Commodities )	586688	610129	4.00	250941	243568	-2.94
2. Import (Commodities)	917527	1033223	12.61	345293	366193	6.05
3.Trade balance(1-2)	-330839	-423094	27.86	-94352	-122625	29.97

**Table13. Top trading partners – total trade (goods), December -2016**

(In million taka)

Country	Exports	Imports	Total	Rank	Percent of Total Trade
China	5995	96372	102367	1	16.79
USA	44137	8211	52348	2	8.59
India	5066	42243	47309	3	7.76
Germany	39764	4222	43986	4	7.21
Singapore	956	40014	40970	5	6.72
United Kingdom	22242	2369	24611	6	4.04
Hong kong	1314	18894	20208	7	3.31
Japan	6811	11221	18032	8	2.96
France	13692	1682	15374	9	2.52
Italy	11263	3315	14578	10	2.39

**Graph 16: Top trading partners – total trade(goods), December-2016.**



**Table 14. Top trading partners – exports (goods), December -2016**

(In million taka)

Country	Export	Rank	Percent of Total Export
USA	44137	1	12.05
Germany	39764	2	10.86
United Kingdom	22242	3	6.07
France	13692	4	3.74
Spain	12832	5	3.50
Italy	11263	6	3.08
Canada	7764	7	2.12
Netherlands	7576	8	2.07
Japan	6811	9	1.86
Belgium	6529	10	1.78

**Table 15. Top trading partners – imports (goods), December -2016**

(In million taka)

Country	Import	Rank	Percent of Total Import
China	96372	1	26.32
India	42243	2	11.54
Singapore	40014	3	10.93
Hong kong	18894	4	5.16
Indonesia	14118	5	3.86
Japan	11221	6	3.06
Malaysia	10297	7	2.81
Korea REP.	9920	8	2.71
Brazil	9702	9	2.65
Argentina	9172	10	2.50

**Table 16. Monthly merchandise export (2 digit HS code)**

(In million taka)

HS Code	Commodities	2015-16		% change from previous month
		Nov'16	Dec'16	
1	Live animals	0.07	-	-
2	Meat and edible meat offal	0.1	0.28	180
3	Fishes, crustacean and other aquatic	3871.29	3597.62	-7.07
4	Dairy produces edible product of animal origin.	4.83	3.55	-26.50
5	Products of animal origin	96.49	158.15	63.90
6	Live tree Plant bulbroot etc.	1.03	-	-
7	Edible vegetables, roots as tubers	1154.92	308.13	-73.32
8	Edible fruits and nuts citrus fruits	-	-	-
9	Coffee, tea, mate and spices	237.97	253.16	6.38
10	Cereals	19.89	32.03	61.04
11	Product of milling industry : malt etc.	12.67	6.83	-46.09
12	Oil seeds and oleaginous fruits	108.27	114.77	6.00
13	Lac, gum resin vegetable sap/ extract	-	-	-
14	Vegetable plaiting materials	64.28	96.1	49.50
15	Animal or vegetable fats and oils	316.85	423.82	33.76
16	Preparations of meat or fish etc.	12.72	10.66	-16.19
17	Sugar and sugar confectionery	107.34	53.46	-50.20
18	Cocoa and cocoa preparations	13.55	5.28	-61.03
19	Preparations of cereals, flour, starch etc.	687.07	678.96	-1.18
20	Preparations of vegetable fruits, nuts, etc.	524.25	396.39	-24.39
21	Misc. edible preparations	7.99	4.02	-49.69
22	Beverages, spirits and vinegar	145.29	89.86	-38.15
23	Residues & waste from the food industry	12.27	17.68	44.09
24	Tobacco mfg tobacco substitutes	513.97	379.78	-26.11
25	Salt, sulphr etc. & plastering metals stone cement	53.81	59.24	10.09
26	Ores, slag and ash	23.66	91.24	285.63
27	Mineral, fuels/oils etc.	3380.31	69.92	-97.93
28	Inorganic chem. comp of specious metals etc.	74.22	87.64	18.08
29	Organic chemicals	48.29	74.68	54.65
30	Pharmaceutical products	593.7	794.68	33.85
31	Fertilizers	-	-	-
32	Tanning/dyeing ext; dye pigments etc.	4.03	4.81	19.35
33	Essential oils, perfumery/toilet pre.	5.18	2.17	-58.11

**Table 16. Monthly merchandise export (2 digit HS code)**

(in million taka)

HS Code	Commodities	2015-16		% change from previous month
		Nov'16	Dec'16	
34	Soap, organic Surface-active agents etc.	4.51	2.97	-34.15
35	Albuminoidal substitute starches, glues etc.	9.97	15.36	54.06
36	Explosive pyrotechnic products	-	-	-
37	Photographic/cinematographic goods	-	-	-
38	Miscellaneous chem. products	63.51	72.95	14.86
39	Plastics and articles thereof	665.42	527.78	-20.68
40	Rubber and articles thereof	165.5	194.1	17.28
41	Raw hides & skins, leather	1913.29	1600.92	-16.33
42	Articles of Leather/Animal Gut	3101.35	1829.57	-41.01
43	Fur skins & artificial fur. Mfg.	-	-	-
44	Wood & art. of wood; wood charcoal	50.79	57.73	13.66
45	Cork and articles of cork	-	-	-
46	Manufactures of straw etc.	110.93	116.1	4.66
47	Pulp/ wood/fibrous cellulose materials etc.	-	-	-
48	Paper & paper board; art. P. pulp etc.	288.22	237.9	-17.46
49	Printed books, news papers, pictures etc.	3.86	5.04	30.57
50	Silk	0.4	-	-
51	Wool, fine/coarse animal hair etc.	2.94	0.71	-75.85
52	Cotton	804.83	654.06	-18.73
53	Other vegetable, Textile fibres, paper/yarn etc	5884.11	5378.05	-8.60
54	Man-made filaments	331.46	275.09	-17.01
55	Man-made staple fibres	150.56	151.17	0.41
56	Wadding felts nonwovens, special yarn etc.	284.19	291.81	2.68
57	Carpet other text. floor coverings	106.33	118.74	11.67
58	Special woven fabrics, tufted tex.fabrics etc.	394.98	348.6	-11.74
59	Impregnated, coated, textile fabrics etc.	122.4	132.11	7.93
60	Knitted or crocheted fabrics	259.81	128.03	-50.72
61	Article of appl. clothing accesso. knit / crocht.	86220.1	93023.66	7.89
62	Article of appl. clothing accesso. knit/	95210.1	110034.56	15.57
63	Other made up textile articles etc.	6058.6	7231.33	19.36
64	Footwear, gaiter & like etc.	4683.52	5416.16	15.64
65	Headgear and parts thereof	1323.6	1293.37	-2.28



**Table 16. Monthly merchandise export (2 digit HS code)**

(In million taka)

HS Code	Commodities	2015-16		% change from previous month
		Nov'16	Dec'16	
66	Umbrellas, sun umbrellas, walk sticks etc.	-	.69	-
67	Prepared feathers & down/articles etc.	99.99	101.98	1.99
68	Art of stone, plastic, cement etc.	-	0.21	-
69	Ceramic products	270.29	255.12	-5.61
70	Glass and glassware	8.78	4.83	-44.99
71	Natural/culture pearls precious stones etc.	78.22	42.37	-45.83
72	Iron or steel	103.3	150.15	45.35
73	Articles of iron or steel	164.33	214.49	30.52
74	Copper and articles thereof	152.47	320.47	110.19
75	Nickel and articles thereof	-	-	-
76	Aluminum and article thereof	7.76	6.04	-22.16
78	Lead and articles thereof	255.46	475.50	86.13
79	Zinc and articles thereof	13.08	86.33	560.02
80	Tin and articles thereof	-	-	-
81	Other base metals, cermets etc.	2.34	-	-
82	Tools, cutlery Spon base Metl Part	25.15	73.92	193.92
83	Miscellaneous art of base metal.	2.37	3.74	57.81
84	Nuclear reactors, boilers etc.	1564.36	2229.69	42.53
85	Electrical mach. & equipment, parts etc.	528.33	431.56	-18.32
86	Rail/tramway locomotives etc.	4.56	4.25	-6.80
87	Vehicles, other than rail/tram way's & parts etc.	312.38	822.36	163.26
88	Aircraft, space craft and parts.	741.58	310.43	-58.14
89	Ships, boats & floating structures	422.46	1.55	-99.63
90	Optical,photo,cinematgph.Medical inst.etc.	513.28	414.66	-19.21
91	Clocks & watches & parts	8.05	2.44	-69.69
92	Musical /instruments and parts etc.	-	-	-
93	Arms, & ammunition and parts & accessories	45.89	-	-
94	Furniture, bedding, mattresses etc.	150.75	396.08	162.74
95	Toys, games & sports requisites & parts	139.5	159.47	14.32
96	Miscellaneous mfg. articles	123.33	106.45	-13.69
97	Works/ art, collectors & antiques	-	-	-
98	Goods Commodities NEC	2.5	0.29	-88.40
<b>Total</b>		<b>226052</b>	<b>243567.85</b>	<b>7.75</b>

**Table 17. Monthly export of major commodities (4 digits)**

(In million taka)

HS Code	Commodities	2015-16		% change from previous month
		Nov'16	Dec'16	
303	Fish frozen	295.87	296.02	0.051
304	Fish fillet, other fish meal	0.11	1.64	1390.909
305	Fish dried	46.62	117.72	152.510
306	Shrimps & prawns frozen	3395.17	2967.33	-12.601
307	Molluscs	5.91	22.08	273.604
506	Bone and horn- cores	38.40	21.99	-42.734
709	Vegetable fresh, chilled other	42.09	27.00	-35.852
902	Tea	7.09	31.57	345.275
1006	Rice	19.89	31.50	58.371
2401	Un-manufactured tobacco	470.43	340.23	-27.677
2710	Petro oil/oil bitum minrl, nec	3380.28	69.82	-97.934
3003-004	Pharmaceutical product	589.99	757.61	28.411
3901-926	Plastic & articles thereof	665.42	527.73	-20.692
4102	Raw hides & skin of sheep's or lambs	-	-	-
4103	Raw hides and skin other	3.60	-	-
4104	Leather Bovine/Equin W/Out hair	976.76	826.86	-15.347
4105	Tanned or crust skins of sheep or lambs	-	11.15	-
4106	Tanned or crust hides and skins or other animals	79.74	95.35	19.576
4107	Leather hole hides and skins or crusting	346.54	290.85	-16.070
4113	Leather further prepared after tanning or crusting including parchment-dressed leather of other animals	506.55	375.02	-25.966
4202	Trunks, suit-case, vanity-cases, brief cases, and other	1439.30	1052.93	-26.844
4602	Basket work, wicker work, and other articles	103.32	111.56	7.975
5303	Jute and other textile bast fibres, raw or retted	1456.24	1303.40	-10.496
5307	Jute yarn	4178.72	3901.83	-6.626
5310	Woven fabrics and jutes or of other textile bast fibres	241.47	172.83	-28.426
5607	Jute twine, cordage, roofs and cables	210.07	232.84	10.839
6101-117	Readymade garments men's women's and girls knitted and crocheted	86220.11	93023.65	7.891
6201-217	Readymade garments men's women's and girls not knitted and crocheted	95210.11	110034.55	15.570
6305	Sacks and bags, of a kind used for the packing of goods	1649.03	1688.00	2.363
6401-6406	Foot ware with outer soles and uppers of rubber or of plastics and other	5068.02	5416.16	6.869
6505	Heads and other headgear, knitted or crocheted	1309.51	1283.01	-2.024
<b>Total</b>		<b>207956.36</b>	<b>225032.2</b>	<b>8.211</b>

**Table 18. Monthly merchandise import (2 digit HS code)**

(In million taka)

H S Code	Commodities	2015-16		% change From previous month
		Nov'16	Dec'16	
1	Live animals	105.97	157.11	48.26
2	Meat and edible meat offal	4.12	21.25	415.72
3	Fishes, crustacean and other aquatic	402.05	546.19	35.85
4	Dairy produces edible product of animal origin.	2200.01	2282.49	3.75
5	Products of animal origin	120.04	91.46	23.81
6	Live tree and other plants etc.	5.72	7.36	28.76
7	Edible vegetables, roots as tubers	6125.79	6398.81	4.46
8	Edible fruits and nuts citrus fruits	2691.05	3040.08	12.97
9	Coffee, tea, mate and spices	2064.25	1904.40	7.74
10	Cereals	9827.41	9720.18	1.09
11	Product of milling industry: malt etc.	369.50	272.90	26.14
12	Oil seeds and oleaginous fruits	5009.70	676.69	86.49
13	Lac, gums, resins , vegetable saps & extra	99.09	58.37	41.09
14	Vegetable plaiting materials	80.13	68.84	14.09
15	Animal or vegetable fats and oils	18730.17	19170.01	2.35
16	Preparations of meat or fish etc.	10.12	14.73	45.51
17	Sugar and sugar confectionery	5435.11	7498.17	37.96
18	Cocoa and cocoa preparation	91.68	74.16	19.11
19	Preparations of cereals, flour, starch etc.	618.99	594.36	3.98
20	Preparations of vegetable, fruits, nuts, etc.	78.95	81.35	3.04
21	Misc. edible preparations	459.60	348.93	24.08
22	Beverages, spirits and vinegar	83.57	84.57	1.19
23	Residues & waste from the food industries	4378.68	3204.21	26.82
24	Tobacco mfg tobacco substitutes	107.46	54.91	48.90
25	Salt, sulphur, etc. and plastering metals stone cement	8892.65	8601.44	3.27
26	Ores, slag and ash	1098.15	631.00	42.54
27	Mineral, fuels/oils etc.	49769.83	43802.64	11.99
28	Inorganic. Chem.: compounds of specious metals etc.	2244.74	1769.48	21.17
29	Organic Chemicals	5434.39	4679.35	13.89
30	Pharmaceutical products	1713.75	1186.36	30.77
31	Fertilizers	8625.10	4944.53	42.67
32	Tanning/dyeing ext; dye pigments etc.	4052.69	3930.29	3.02
33	Essential Oils, perfumery/toilet pre.	814.88	575.29	29.40
34	Soap, organic surface-active agents etc.	1077.84	883.89	17.99

**Table 18. Monthly merchandise import (2 digit HS code)**

(In million taka)

H S Code	Commodities	2015-16		% change from previous month
		Nov'16	Dec'16	
35	Albuminoidal substitute starches, glues e	619.94	749.25	20.86
36	Explosives pyrotechnic products etc.	0.72	11.22	1458.28
37	Photographic/cinematographic goods	116.16	245.66	111.49
38	Miscellaneous chem. products	4334.65	4211.09	2.85
39	Plastics and articles thereof	13921.40	12849.22	7.70
40	Rubber and articles thereof	2654.58	2498.63	5.87
41	Raw hides & skins, leather	1282.21	1205.53	5.98
42	Articles of Leather/Animal gut	346.36	257.55	25.64
43	Fur skins & artificial fur. Mfg.	7.73	0.29	96.22
44	Wood & art. of wood; wood charcoal	821.01	857.35	4.43
45	Cork and articles of cork	0.72	1.64	127.43
46	Manufactures of straw etc.	1.63	3.73	128.60
47	Pulp/ wood/fibrous cellulosic materials etc.	1369.88	1572.84	14.82
48	Paper & paper board; art. Paper pulps etc.	5277.06	4547.78	13.82
49	Printed Book, News paper & picture	261.54	889.69	240.17
50	Silk	13.20	14.46	9.57
51	Wool, fine/coarse animal hair etc.	98.99	77.64	21.57
52	Cotton	47284.65	42912.47	9.25
53	Other vegetabe, textile fibres, paper/yarn etc.	752.72	892.81	18.61
54	Man-made filaments	8884.62	8372.22	5.77
55	Man-made staple fibres	11254.61	9749.00	13.38
56	Wadding felts non-wovens, special yarn etc.	448.35	371.96	17.04
57	Carpet other text. floor coverings	56.45	44.40	21.34
58	Special woven fabrics, tufted textile fabrics etc.	1313.25	1260.44	4.02
59	Impregnated, coated, textile fabrics etc.	1205.44	1322.81	9.74
60	Knitted or crocheted fabrics	4937.82	4098.09	17.01
61	Article of apparel. clothing accessor. knit /crocht.	175.10	111.34	36.41
62	Articl of apparel.clothing accessor.n-knit/ crocht.	5748.18	5225.27	9.10
63	Other made up textile articles etc.	693.06	885.67	27.79
64	Footwear, gaiter & like etc.	1408.38	1086.81	22.83
65	Headgear and parts thereof	27.09	23.40	13.61
66	Umbrellas, sun umbrellas, walk sticks etc.	11.57	21.16	82.88

**Table18. Monthly merchandise import (2 digit HS code)**

(In million taka)

H S Code	Commodities	2015-16		% change from previous month
		Nov'16	Dec'16	
67	Prepared feather & down articles	43.11	39.08	9.35
68	Art of stone, plastic, cement etc.	350.61	370.97	5.81
69	Ceramic products	980.98	658.49	32.87
70	Glass and glassware	604.39	538.59	10.89
71	Natural/culture pearls & precious stones	54.89	67.37	22.74
72	Iron or steel	17179.66	19071.32	11.01
73	Articles of iron or steel	4775.52	4424.47	7.35
74	Copper and articles thereof	1572.31	1061.25	32.50
75	Nickel and articles thereof	9.89	3.83	61.28
76	Aluminum and article thereof	2113.44	2006.06	5.08
78	Lead and articles thereof	190.08	318.10	67.30
79	Zinc and articles thereof	1161.21	944.52	18.66
80	Tin and articles thereof	7.49	17.70	136.28
81	Other base metals, cermets etc.	20.03	101.40	406.25
82	Tools, implements, cutlery etc.	319.01	310.07	2.80
83	Miscellaneous art of base metal.	692.01	717.77	3.72
84	Nuclear reactors, boilers etc.	41580.61	38717.02	6.89
85	Electrical mach. & equipment, parts etc.	22635.39	17944.35	20.72
86	Rail/tramway locomotives etc.	41.01	31.22	23.88
87	Vehicles, other than rail/tram way's & parts etc.	11941.21	9324.40	21.91
88	Aircraft, space craft and parts.	3092.42	377.93	87.78
89	Ships, boats & floating structures	7182.02	24792.08	245.20
90	Optical, Photograph, Cinematograph, Medical Inst.	3666.57	4265.49	16.33
91	Clocks & watches & parts.	61.71	48.57	21.29
92	Musical /instruments and parts etc.	3.61	6.70	85.66
93	Arms, & ammunition and parts & accessories	2993.70	3067.02	2.45
94	Furniture, bedding, mattresses etc.	952.43	869.66	8.69
95	Toys, games & sports requisites & parts etc.	377.48	349.16	7.50
96	Miscellaneous mfg. articles	2074.13	1990.77	4.02
97	Works/ art, collectors & antiques	25.55	5.82	77.22
98	Goods commodities nec	3.92	4.27	8.97
<b>Total</b>		<b>384858.64</b>	<b>366192.55</b>	<b>4.85</b>

**Table 19. Monthly import of major commodities (4 digits)**

(In million taka)

H S Code	Commodities	2015-16		% change From previous month
		Nov'16	Dec'16	
401	Milk & cream	3.62	3.41	-5.80
703	Onion & Garlic	1850.43	1888.51	2.06
713	Dried leguminous vegetable	3475.28	4379.53	26.02
804	Dates	86.36	266.34	208.41
806	Grapes	162.90	179.23	10.02
808	Apples	1358.17	997.25	-26.57
904	Pepper	438.01	432.25	-1.32
1001	wheat	7393.71	6523.01	-11.78
1006	Rice	216.83	262.94	21.27
1108	Starches	333.81	262.59	-21.34
1201-1212	Oil seeds	5009.70	676.22	-86.50
1507	Soya bean oil	9370.44	9852.00	5.14
1511	Palm Oil	9054.96	9060.09	0.06
1701	Sugar	5314.11	7400.09	39.25
2401	Un-manufactured tobacco	74.07	47.61	-35.72
2523	Cement	5580.56	5635.78	0.99
2710	Petroleum product	41939.01	37305.01	-11.05
2801-2851	In organic Chemicals	2243.99	1768.56	-21.19
2901-2942	Organic Chemicals	5434.40	679.36	-87.50
3101-3105	Fertilizers	8625.10	4944.52	-42.67
3201-3215	Tanning & dyeing	4052.72	3930.26	-3.02
3801-3825	Chemical product	4334.65	4211.11	-2.85
3901-3926	Plastic & articles thereof	13921.42	12849.18	-7.70
4801-4823	Paper & paper board	5177.06	4547.76	-12.16
5201-5203	Raw cotton	11478.70	14622.26	27.39
5205-5207	Cotton yarn	6089.17	4937.60	-18.91
5208-5212	Cotton fabric	29678.44	23406.99	-21.13
5402-5406	Synthetic yarn	2666.76	2412.52	-9.53
5407-5408	Synthetic fabric	5189.36	5043.40	-2.81
5504-5507	Staple fibre	720.46	889.89	23.52
5509-5511	Yarn of staple fibre	1976.90	1929.09	-2.42
5512-5516	Fabric of staple fibre	6656.49	5345.41	-19.70
7201-7229	Iron & steel	17179.66	19071.27	11.01
7301-7326	Article of iron & steel	4775.64	4424.40	-7.35
7601-7616	Aluminum & article thereof	2113.35	2006.03	-5.08
8402-8485	Machinery & parts	41478.03	38081.45	-8.19
8501-8548	Electrical goods	22631.38	17899.33	-20.91
8607-8609	Rail, tramway, locomotive	41.00	31.21	-23.88
8701-8716	Vehicle	11941.19	9324.40	-21.91
8902,8903,8908	Ships, boat, floating structure	4046.34	6482.71	60.21
9001-9033	Optical, Photo, Cinema etc.	3526.22	4264.28	20.93
<b>Total</b>		<b>307640.4</b>	<b>278274.85</b>	<b>-9.55</b>

**Table 20. Re-exports Value, December -2016 by 2 digit HS Code.**

<b>HS CODE</b>	<b>HS DESCRIPTIONS</b>	<b>(In million taka)</b>
<b>Total: Re-exports</b>		<b>2448.00</b>
25	Salt, sulphur, etc. and plastering metals stone cement	0.06
30	Pharmaceutical products	0.21
38	Miscellaneous Chemical product	0
39	Plastics and articles thereof	2.03
40	Rubber & articles thereof	0.85
41	Raw hides & skins of bovine	4.22
52	Cotton	6.83
54	Man-made filaments	2.81
55	Man-made staple fibres	0.19
56	Wadding felts non-wovens, special yarn etc.	4.63
62	Articl of apparl.cloth accessor.n-knit	12.64
63	Otr made up text artcle set rag	3.07
64	Footwear, gaiter & like etc.	0
65	Headgear and parts thereof	0.21
68	Art of stone, plastic, cement etc.	0.21
71	Natural/culture pearls & precious stones	19.77
73	Articles of iron & steel	67.51
82	Tool cut spon base metl & parts	60.66
84	Nuclear rect boil mach & parts	1793.54
85	Electrcl machinery eqpmnt part	125.90
87	Vechicle otr rail/tram rol-stoc	301.43
88	Aircraft, space craft and parts.	0.47
90	Optical , photo, cinma surgi apt	39.72
96	Miscellaneous mfg. articles	1.04

**Table 21. Re-Import Value, December -2016 by 2 digit HS Code.**

<b>HS CODE</b>	<b>HS DESCRIPTIONS</b>	<b>(In million taka)</b>
<b>Total: Re-Import</b>		<b>4.52</b>
84	Nuclear rect boil mach & parts	4.50
90	Optical , photo, cinma surgi apt	0.02

**Table 22 . Temporary export Value, December -2016 by 2 digit HS Code**

HS CODE	HS DESCRIPTIONS	(In million taka)
	Total : Temporary- Exports	408.29
40	Rubber & articles thereof	0.1
49	Printed Book, News paper & picture	0
73	Articles of iron and steel	3.67
82	Tool cut spon base metl & parts	0.63
84	Nuclear rect boil mach & parts	74.13
85	Electrcl machinry eqipmnt part	18.78
88	Aircraft, space craft and parts.	309.94
90	Optical, photo, cinema surgi apt	1.04

**Table 23 . Temporary Import Value, December -2016 by 2 digit HS Code**

HS CODE	HS DESCRIPTIONS	(In million taka)
	Total : Temporary- Exports	93.76
34	Soap, organic surface-active agents etc.	0
39	Plastics and articles thereof	0.22
42	Articles of Leather/Animal gut	0.02
63	Otr made up text artcle set rag	0.07
65	Headgear and parts thereof	0
73	Articles of iron and steel	19.82
82	Tool cut spon base metl & parts	0.01
83	Miscellaneous art of base metl	0.02
84	Nuclear rect boil mach & parts	61.49
85	Electrcl machinry eqipmnt part	5.59
90	Optical, photo, cinema surgi apt	6.52