

***Monthly Release of
Foreign Trade Statistics (FTS)
October 2016***

Bangladesh Bureau of Statistics (BBS) of Statistics and Informatics Division (SID) compiles and publishes Foreign Trade Statistics (FTS) on a regular basis. This publication presents monthly trend of Bangladesh foreign trade statistics including statistics on top trading partners, essential import commodities, and last twelve months scenario of major export and import goods for October, 2016.

Merchandise trade data of this publication are provided by National Board of Revenue (NBR) and while data on services from Bangladesh Bank. Data presented in this publication are provisional and subject to revision. All these provisional data will be subsequently reviewed and revised. Revised data are being presented in next issues.

In October, 2016, total export and import of goods and services is recorded at decreased by Tk. 235.52 and decreased by Tk 410.83 billion respectively resulting in a trade deficit at goods and services of Tk. 175.31 billion. The growth of export and import in October, 2016 increased by 17.08 and decreased by 5.10 percent respectively comparing to September, 2016 and it is increased by 17.76 and increased by 4.88 percent respectively comparing to October, 2015.

For the three months ending in October, 2016 the moving average of export of goods and services was Tk.238.57 billion, while the moving average of import of goods and services was Tk. 410.19 billion resulting in an average trade deficit of Tk.171.62 billion. For the three months ending in September, 2016 the average trade deficit was Tk. 70.11 billion, reflecting average exports of Tk.139.16 billion and average imports of Tk.209.27 billion.

Indicators of this publication are expected to provide a good idea about the trend of export and import of the country over the previous months of a year. This monthly release would be a useful document for planners, policy makers, researchers, development partners/agencies, academicians and other stakeholders.

Table 1: Export, import and trade deficits

(In billion taka)

Period	Export			Import			Trade balance		
	Total	Goods	Services	Total	Goods	Services	Total	Goods	Services
2014-15	2637.03	2408.66	411.38	4165.57	3671	593.77	-1528.53	-1262.4	-275.65
2015-16	2898.06	2634.98	263.38	4357.7	3869.35	488.35	-11869.5	-1234.67	-224.97
2016-17									
Nov-15	207.4	183.30	24.10	370.92	325.69	45.23	163.22	-142.39	-21.13
Dec-15	288.52	250.94	37.58	379.61	345.29	34.32	-91.09	-94.35	3.26
Jan-16	269.02	248.65	20.37	366.66	322.45	44.21	-97.64	-73.8	-23.84
Feb-16	244.23	223.14	21.09	346.30	305.85	40.45	-102.07	-82.71	-19.36
Mar-16	244.68	220.87	23.81	369.97	332.75	37.22	-125.29	-111.88	-13.41
Apr-16	232.78	209.12	23.66	354.67	319.74	34.93	-121.89	-110.62	-11.27
May-16	257.69	235.85	21.84	425.05	385.23	39.82	-167.36	-149.38	-17.98
Jun-16	305.85	278.87	27.28	414.30	346.49	67.81	-10845	-67.92	-40.53
July-16	-62.71	197.29	-260	-191.94	267.06	-459	-254.65	-69.77	-199.00
Aug-16	279.01	257.61	21.40	386.82	343.07	43.75	-107.81	-85.46	-22.35
Sep-16	201.17	174.59	26.58	432.92	384.08	48.84	-231.75	-209.49	-22.26
Oct-16	235.52	211.69	23.83	410.83	371.63	39.20	-175.31	-159.94	-15.37

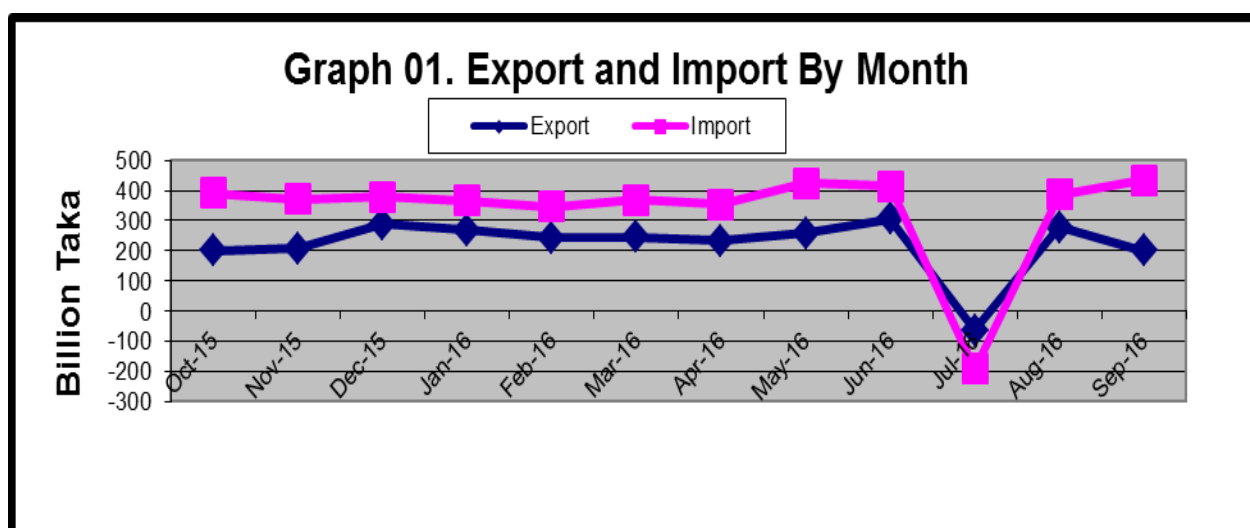
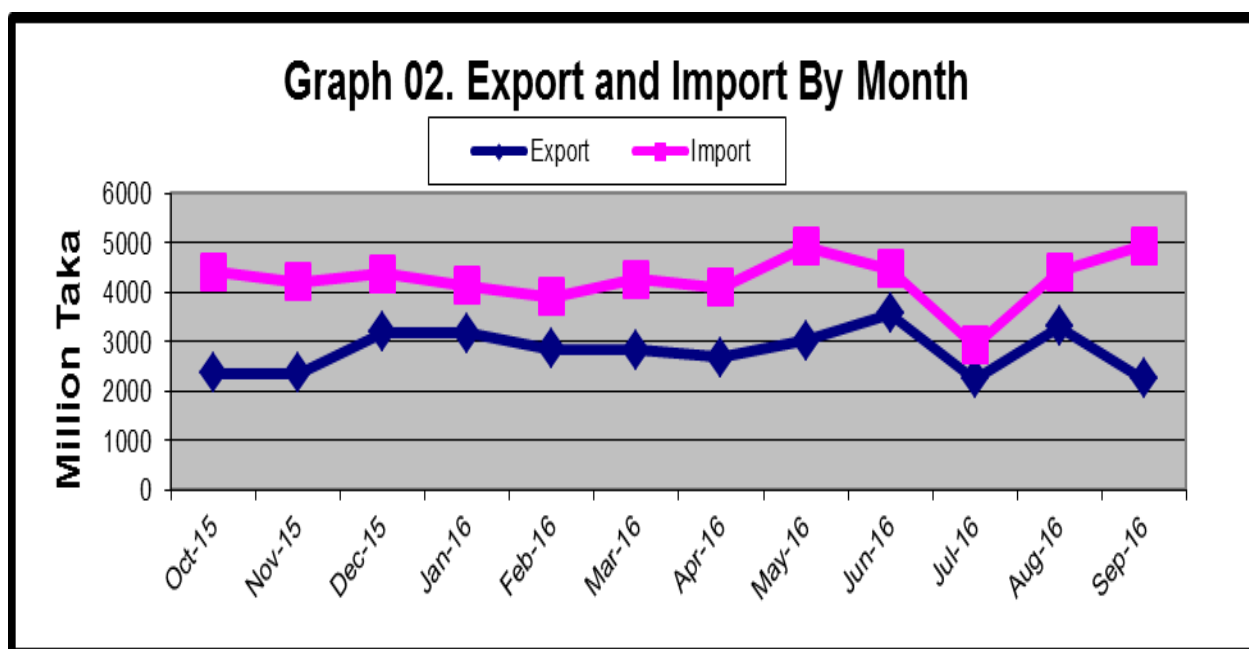


Table 2: Export, import and trade deficits

(In million US \$)

Period	Export			Import			Trade balance		
	Total	Goods	Service	Total	Goods	Service	Total	Goods	Service
2014-15	31123	30594	229	47675	47081	594	-16501	-14289	-365
2015-16	33744	33480	264	49668	49182	486	-15924	-15702	-222
2016-17									
Nov-15	2366	2342	24	4207	4162	45	-1841	-1820	-21
Dec-15	3196	3158	38	4380	4346	34	-1184	-1188	4
Jan-16	3169	3149	20	4128	4084	44	-959	-935	-24
Feb-16	2846	2825	21	3911	3871	40	-1065	-1046	-19
Mar-16	2825	2801	24	4257	4220	37	-1432	-1419	-13
Apr-16	2676	2652	24	4090	4055	35	-1414	-1403	-11
May-16	3013	2991	22	4926	4886	40	-1913	-1895	-18
Jun-16	3560	3533	27	4461	4394	67	-901	-861	-40
July-16	2242	2505	-260	2928	3387	-459	-686	-885	-199
Aug-16	3307	3286	21	4420	4376	44	-1113	-1090	-23
Sep-16	2254	2227	27	4948	4899	49	-2694	-2672	-22
Oct-16	2724	2700	24	4779	4740	39	-2055	-2040	-15



Ta

Table 3. Percent change from the previous month (goods)

(In million taka)

Items	2015-16		
	Sep'16	Oct'16	Percent change from the previous month
1. Export (Commodities)	174589	211689	21.25
1. Ready made Garments	142838	168989	18.31
2. Shrimps and prawn	3371	4357	29.25
3. Vegetable textiles fiber/ yarn	4348	5752	32.29
4. Made-up textiles articles	4702	6162	31.05
5. Raw hides, skins & leathers	1816	1836	1.10
6. Raw jute	990	1455	46.97
7. Footwear Special woven fabrics	4491	4471	-0.45
8. Fertilizer	-	-	-
9. Hats and other head gear	1012	1302	28.66
10. Special woven fabrics	234	291	24.36
11. Others	10787	17074	58.28
2. Import (Commodities)	384083	371626	-3.24
1. Machinery & parts	39180	38704	-1.21
2. Petroleum product and oil	40329	41139	2.01
3. Electric Machinery	16764	20066	19.70
4. Soya bean and Palm oil	14155	23372	65.11
5. Raw cotton	11782	12582	6.79
6. Textile fabrics	648	642	-0.93
7. Iron and steel	17657	15077	-14.61
8. Plastics and articles	11929	12077	1.24
9. Wheat	11875	13138	10.64
10. Fertilizer	6491	6618	1.96
11. Others	213273	188211	-11.75
3. Trade balance (1-2)	-209494	-159937	-23.66

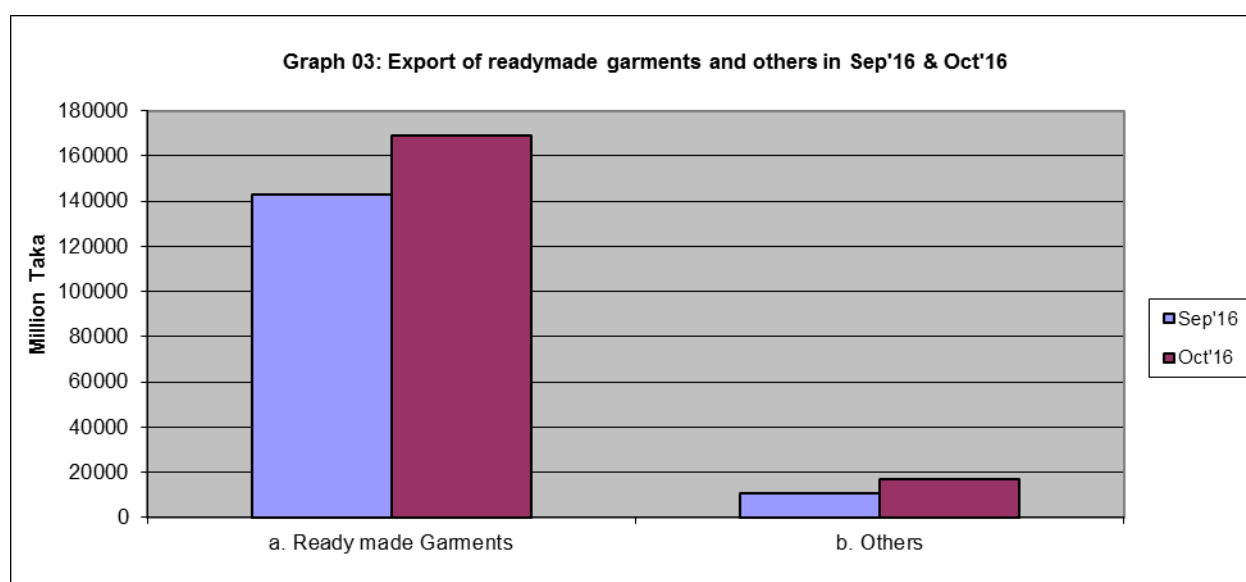


Table 4. Import of Essential Commodities Quantity in M. Ton

Items	2015-16			
	Sep'16	Oct'16	Percent change from the previous month	Cumulative (June -16)
Import (Commodities)				
1. Raw sugar	218471	103346	-52.70	321817
2. Palm oil	225189	251156	11.53	476345
3. Soya bean oil	46837	151055	222.51	197892
4. Milk & Cream	6187	6389	3.26	12576
5. Ginger	-	-	-	-
6. Chillies	-	-	-	-
7. Wheat	707614	830913	17.42	1538527
8. Rice	2392	5793	142.18	8185
9. Lentil & other	9105	6248	-31.38	15353
10. Onion	85012	165510	94.69	250522
11. Garlic	3617	4412	21.98	8029
12. Tea	294	875	197.62	1169
13. Oil seed	10139	17580	73.39	27719

Table 5: Twelve months export of readymade garments during 2014-15 to 2016-17

(In million taka)

Month	Ready made Garments (Knitted)			Ready made Garments (Not Knitted)		
	2014-15	2015-16	2016-17	2014-15	2015-16	2016-17
July	101485	87695	84441	93914	84619	81559
August	69664	88007	109411	63171	88567	104325
September	82360	77130	72743	72051	74889	70095
October	60953	71632	88928	56604	68416	80061
November	70801	81761		77444	90519	
December	82837	94109		98742	116152	
January	86721	91736		99008	114106	
February	74703	81963		89141	104054	
March	72390	80884		88990	100523	
April	73066	83374		77882	88899	
May	90165	92649		93251	99029	
June	97901	112423		101655	123404	

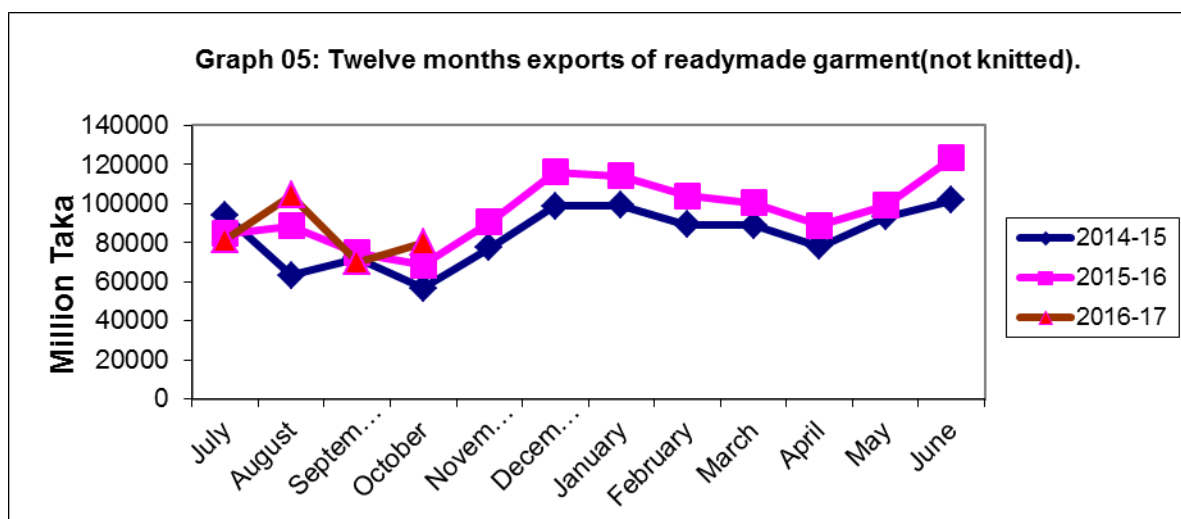
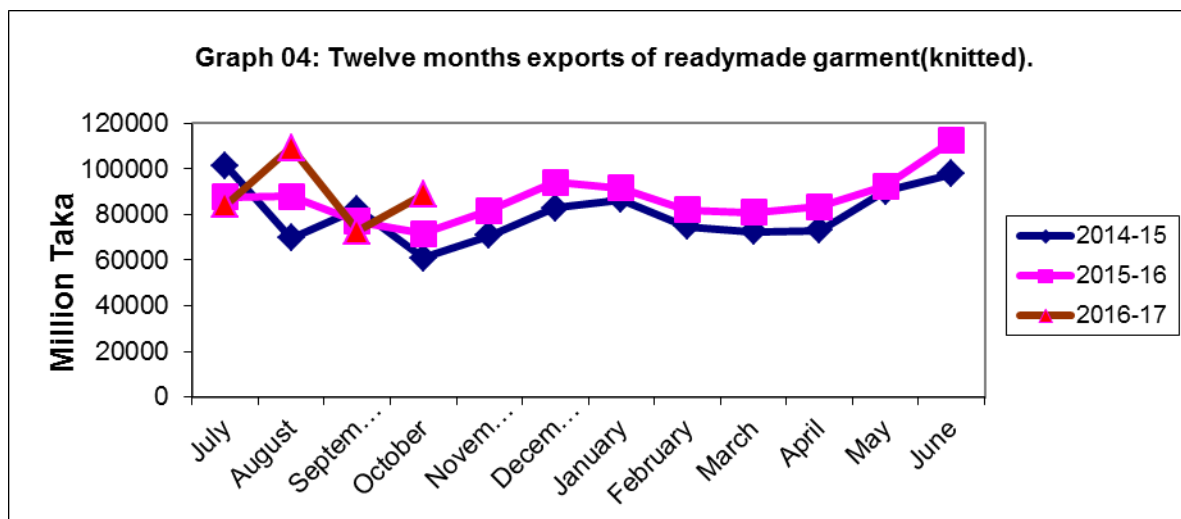


Table 6: Twelve months export of raw hides, skins & leather, 2014-15 to 2016-17

(In million taka)

Month	Raw hides, skins & leather		
	2014-15	2015-16	2016-17
July	2899	1722	1173
August	2230	1914	2269
September	3342	1863	1816
October	2637	1560	1836
November	2335	-	-
December	2930	1747	-
January	2530	2342	-
February	1942	1980	-
March	2749	1885	-
April	2558	1351	-
May	2506	1747	-
June	2219	2130	-

Graph 06: Twelve months exports of raw hides,skins & leather.

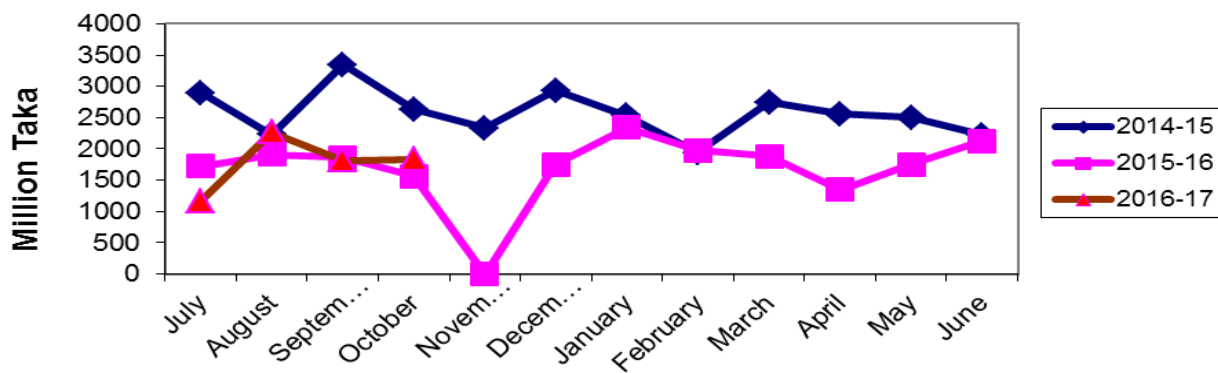


Table 7: Twelve months export of shrimps and prawn, 2014-15 to 2016-17.

(In million taka)

Month	Shrimps and prawn		
	2014-15	2015-16	2016-17
July	4774	2807	2818
August	4199	2537	3803
September	4997	3293	3371
October	3674	4186	4357
November	3738	-	-
December	3723	3537	3537
January	2644	3130	3130
February	2106	2733	2733
March	2247	2044	2044
April	1970	2497	2497
May	2647	3086	3086
June	2738	3857	3857

Graph 07: Twelve months exports of shrimps & prawn.

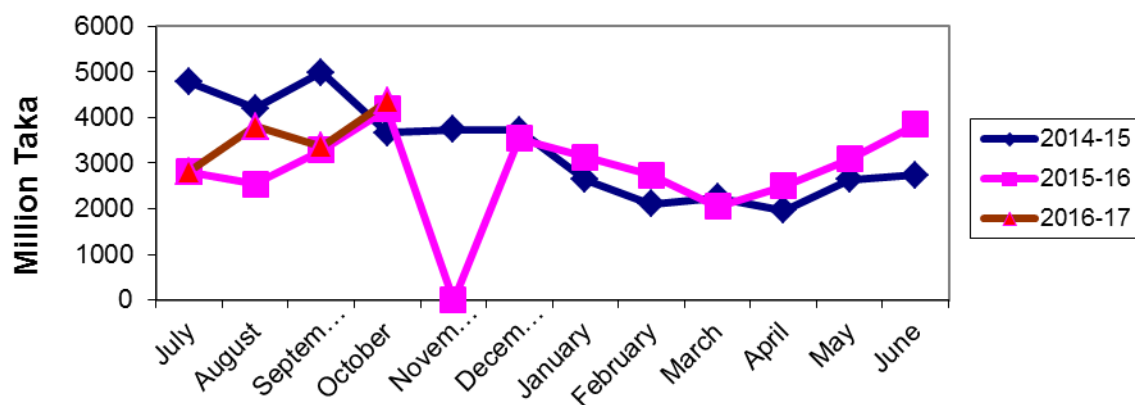
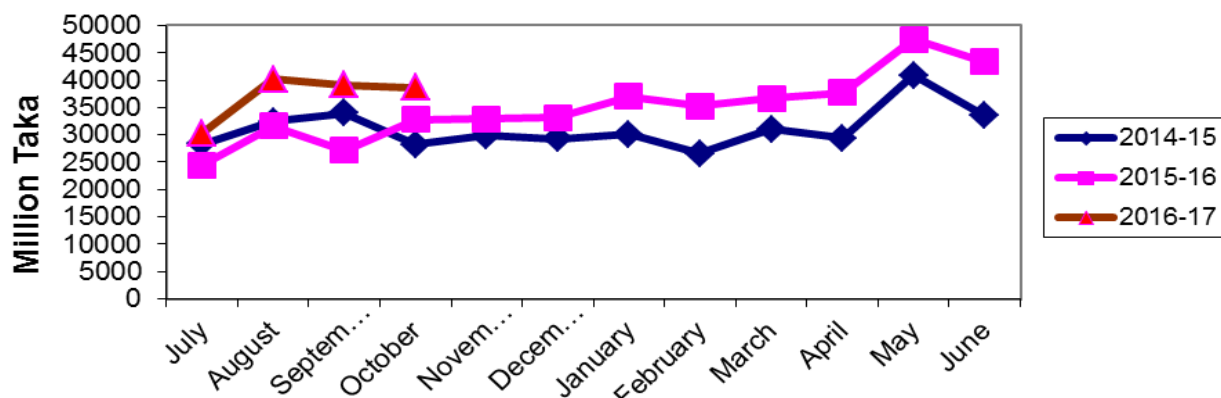


Table 8: Twelve months import of machinery & parts and electrical machinery during 2014-15 to 2016-17.

(In million taka)

Month	Machinery & Parts			Electrical Machinery		
	2014-15	2015-16	2016-17	2014-15	2015-16	2016-17
July	28289	24493	30300	16083	16700	13592
August	32463	31591	40158	19161	18123	19538
September	33942	27158	39180	20119	18939	16764
October	28228	32752	38704	15598	15241	20066
November	29911	32918		15966	15545	
December	29267	33183		17134	15165	
January	30114	36994		13332	21949	
February	26528	35261		12858	19203	
March	31018	36707		12829	19436	
April	29399	37742		18018	16414	
May	40908	47508		15808	25174	
June	33530	43394		18484	25045	

Graph 08: Twelve months imports of machinery & parts.



Graph 09: Twelve months imports of electrical machinery .

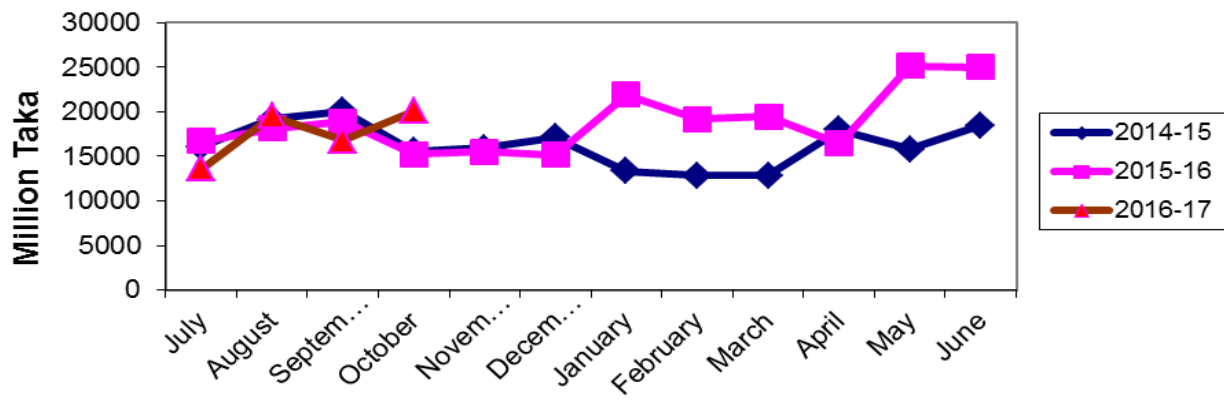
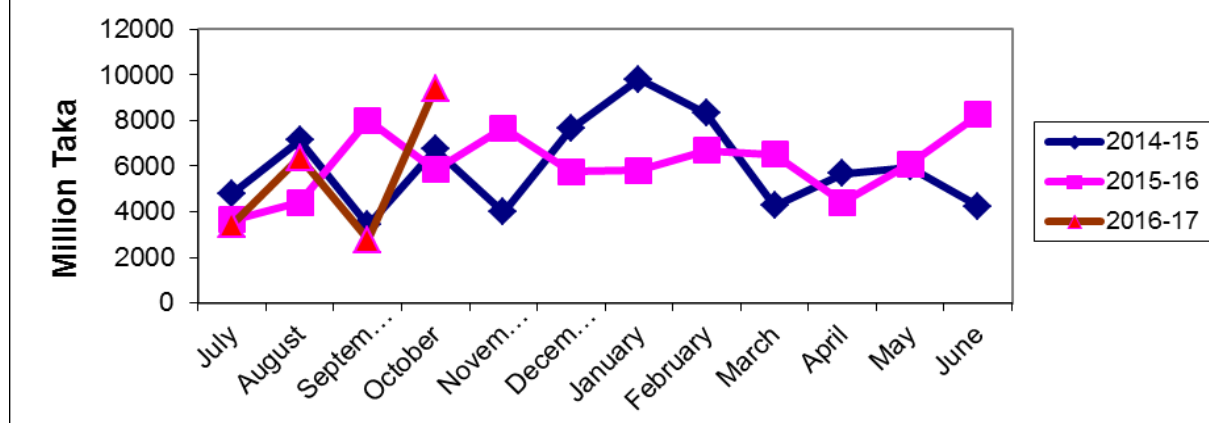


Table 9: Twelve months imports of Soya bean and Palm oil during 2014-15 to 2016-17

(In million taka)

Month	Soya bean			Palm Oil		
	2014-15	2015-16	2016-17	2014-15	2015-16	2016-17
July	4812	3653	3456	20866	6040	5598
August	7149	4408	6371	5369	16473	12532
September	3419	7999	2780	14583	20298	11375
October	6757	5855	9417	9185	11479	13955
November	3994	7681		10064	8193	
December	7638	5771		12918	8090	
January	9814	5824		18128	10559	
February	8311	6686		11874	11909	
March	4271	6518		16990	11947	
April	5674	4396		9897	14811	
May	5946	6107		5211	16688	
June	4253	8271		9450	14474	

Graph 10: Twelve months imports of soya bean oil .



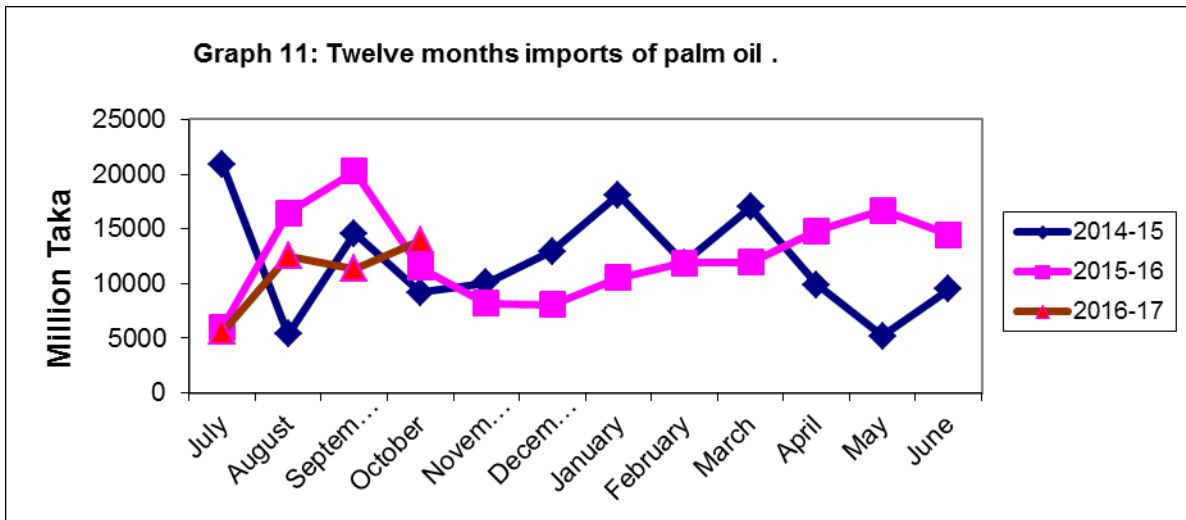
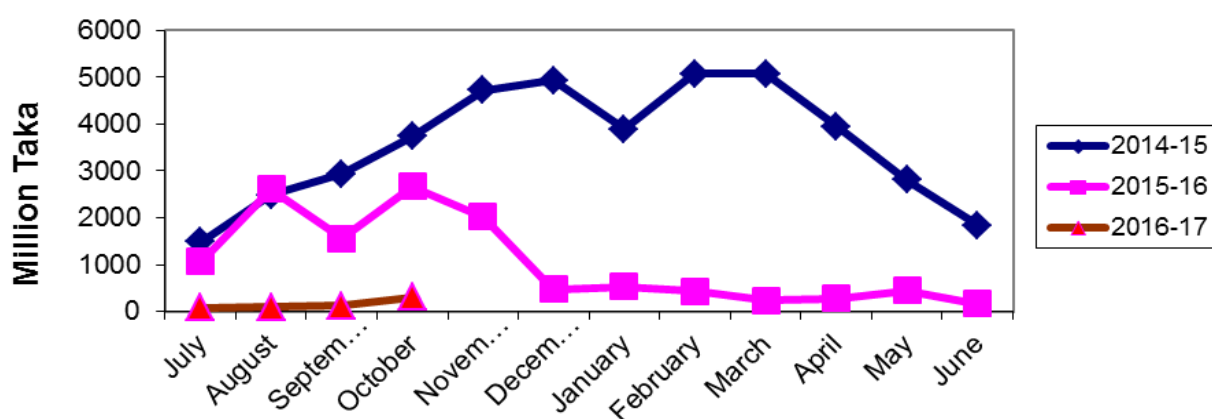


Table 10: Twelve months import of rice and wheat during 2014-15 to 2016-17

(In million taka)

Month	Rice			Wheat		
	2014-15	2015-16	2016-17	2014-15	2015-16	2016-17
July	1489	1064	76	1611	1905	4068
August	2492	2618	96	6300	1199	5193
September	2939	1560	117	7266	6754	11875
October	3743	2671	310	10175	9186	13138
November	4722	2021		5291	6682	
December	4932	479		4202	6400	
January	3887	526		2917	9773	
February	5073	428		5039	6459	
March	5081	233		7865	4853	
April	3949	272		12385	5500	
May	2813	450		8045	8503	
June	1840	167		7494	7310	

Graph 12: Twelve months imports of rice .



Graph 13: Twelve months imports of wheat .

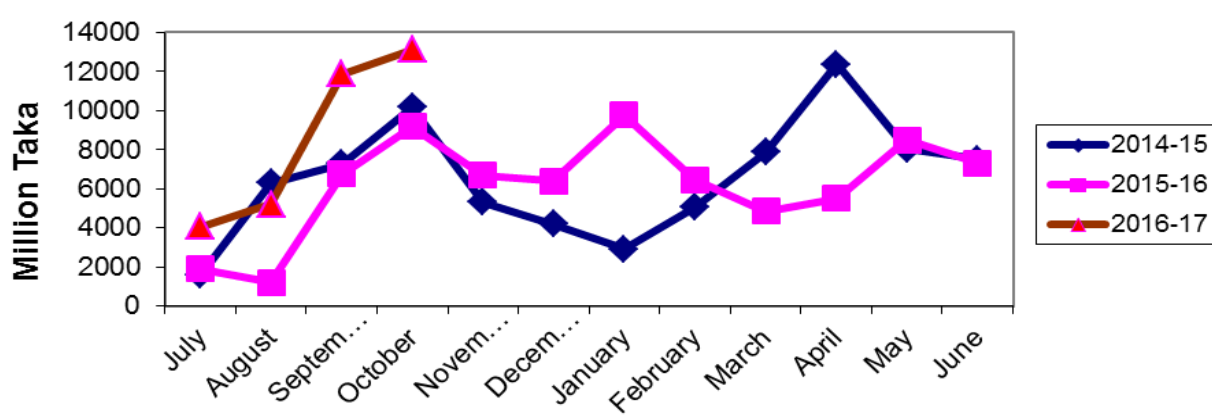
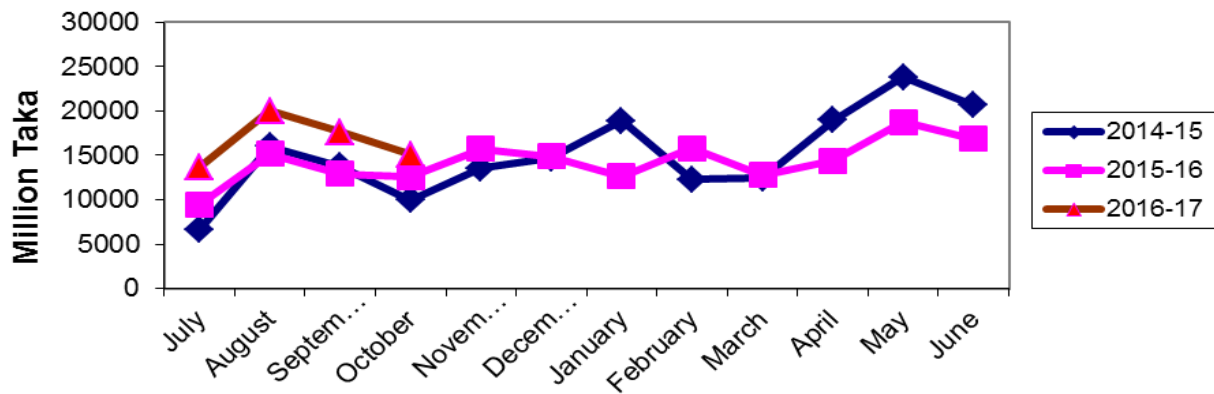


Table 11: Twelve months import of iron & steel and plastics & articles during 2014-15 to 2016-17

(In million taka)

Month	Iron & Steel			Plastics & articles		
	2014-15	2015-16	2016-17	2014-15	2015-16	2016-17
July	6683	9460	13715	11174	10267	9887
August	16007	15195	20027	13502	11898	12990
September	13734	12910	17657	13403	9483	11929
October	9949	12553	15077	10867	11702	12077
November	13530	15719		11119	12187	
December	14663	14862		11716	12600	
January	18885	12624		12045	10967	
February	12286	15829		9608	11065	
March	12398	12811		12993	12542	
April	18956	14376		11778	11685	
May	23826	18759		12695	12688	
June	20644	16872		12690	12269	

Graph 14: Twelve months imports of iron & steel .



Graph 15 : Twelve months imports of plastics & articles .

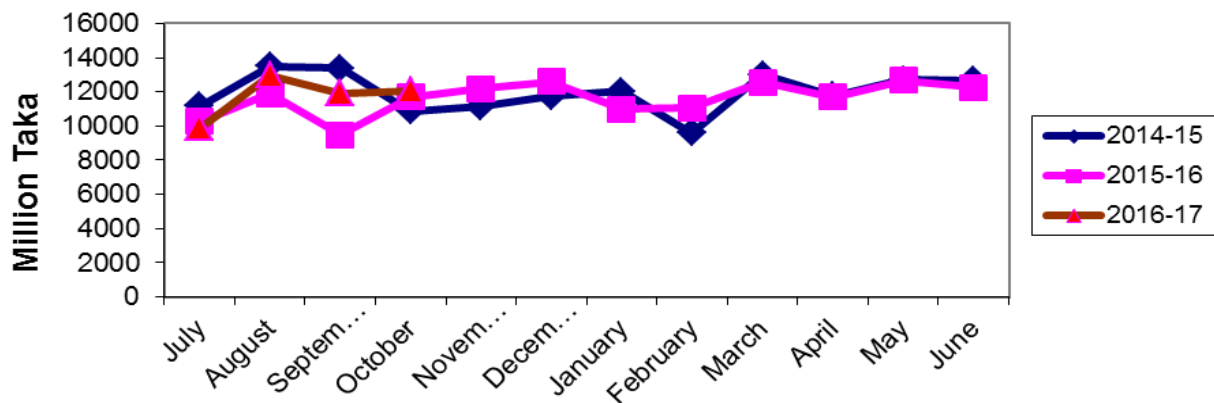


Table 12. Point to point percent change in external trade (goods)

(In million taka)

Items	August-October			October		
	2015-16	2016-17	Change in Percent	2015-16	2016-17	Change in Percent
1. Export(Commodities)	547655	608788	11.16	183266	211689	15.51
2. Import (Commodities)	982005	965566	-1.67	341336	37162	8.87
3.Trade balance(1-2)	-434350	-356778	-17.86	-158070	-159937	1.18

Table13. Top trading partners – total trade (goods), October -2016

(In million taka)

Country	Exports	Imports	Total	Rank	Percent of Total Trade
China	7353	73354	80707	1	13.84
Singapore	614	43814	44428	2	7.62
India	4380	39760	44140	3	7.57
Germany	38228	5054	43282	4	7.42
USA	33879	6437	40316	5	6.91
United Kingdom	21035	2719	23754	6	4.07
Hong kong	1093	20563	21656	7	3.71
Indonesia	311	17580	17891	8	3.07
Japan	6196	10532	16728	9	2.87
France	14228	1347	15575	10	2.67

Graph 16: Top trading partners – total trade (goods), October- 2016.

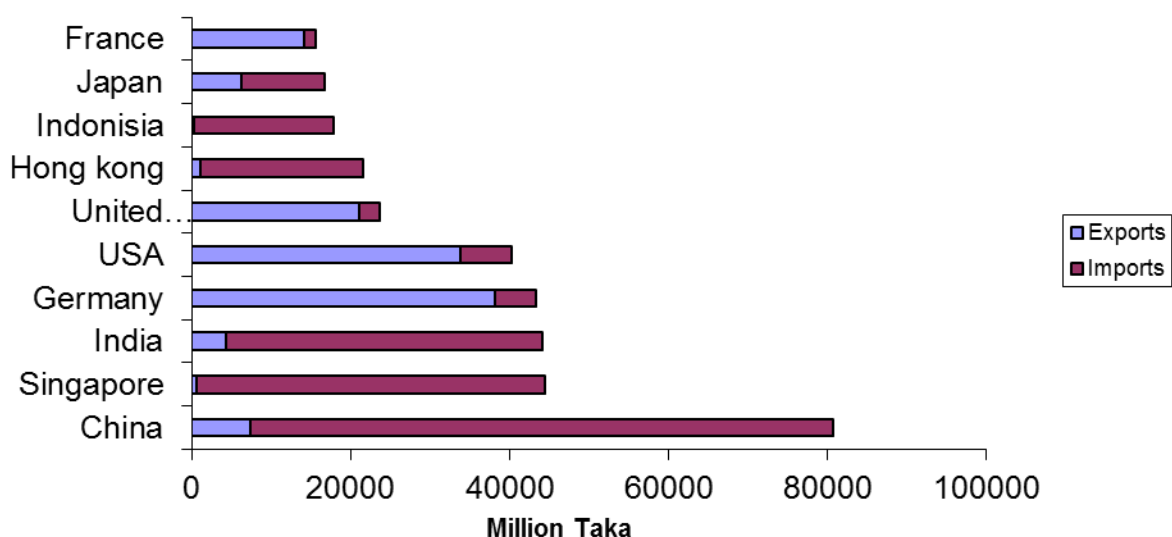


Table 14. Top trading partners – exports (goods), October -2016

(In million taka)

Country	Export	Rank	Percent of Total Export
Germany	38228	1	18.06
USA	33879	2	16.00
United Kingdom	21035	3	9.94
France	14222	4	6.72
Spain	11360	5	5.37
Italy	8375	6	3.96
China	7353	7	3.47
Japan	6196	8	2.93
Belgium	6171	9	2.92
Other Contri	5172	10	2.44

Table 15. Top trading partners – imports (goods), October -2016

(In million taka)

Country	Import	Rank	Percent of Total Import
China	73354	1	19.74
Singapore	43814	2	11.79
India	39760	3	10.70
Hong kong	20563	4	5.53
Russian Fed	17941	5	4.83
Indonesia	17580	6	4.73
Japan	10532	7	2.83
Korea REP.	9811	8	2.64
Brazil	9257	9	2.49
Taiwan	8667	10	2.33

Table 16. Monthly merchandise export (2 digit HS code)

(In million taka)

HS Code	Commodities	2015-16		% change from previous month
		Sep'16	Oct'16	
1	Live animals	0.04	0.05	25
2	Meat and edible meat offal	19.2	0.01	-99.95
3	Fishes, crustacean and other aquatic	3680.25	4692.24	27.50
4	Dairy produces edible product of animal origin.	5.54	1.01	-81.77
5	Products of animal origin	45.17	87.24	93.14
6	Live tree Plant bulbroot etc.	0.54	-	-
7	Edible vegetables, roots as tubers	408.77	332.62	-18.63
8	Edible fruits and nuts citrus fruits	15.84	0.55	-96.53
9	Coffee, tea, mate and spices	180.18	244.89	35.91
10	Cereals	14.39	20.98	45.80
11	Product of milling industry : malt etc.	6.1	15.48	153.77
12	Oil seeds and oleaginous fruits	93.3	82.63	-11.44
13	Lac, gum resin vegetable sap/ extract	0.67	0.88	31.34
14	Vegetable plaiting materials	88.52	68.99	-22.06
15	Animal or vegetable fats and oils	290.1	418.48	44.25
16	Preparations of meat or fish etc.	24.38	23.62	-3.12
17	Sugar and sugar confectionery	57.03	149.37	161.91
18	Cocoa and cocoa preparations	6.86	13.43	95.77
19	Preparations of cereals, flour, starch etc.	438.72	593.34	35.24
20	Preparations of vegetable fruits, nuts, etc.	429.71	596.37	38.78
21	Misc. edible preparations	4.81	5.29	9.98
22	Beverages, spirits and vinegar	199.07	157.69	-20.79
23	Residues & waste from the food industry	17	4.97	-70.76
24	Tobacco mfg tobacco substitutes	140.17	848.09	505.04
25	Salt, sulphr etc. & plastering metals stone cement	76.18	55.52	-27.12
26	Ores, slag and ash	107.01	4.28	-96.00
27	Mineral, fuels/oils etc.	145.11	739.85	409.85
28	Inorganic chem. comp of specious metals etc.	106.49	148.94	39.86
29	Organic chemicals	4.62	9.14	97.84
30	Pharmaceutical products	511.11	568.73	11.27
31	Fertilizers	-	-	-
32	Tanning/dyeing ext; dye pigments etc.	5.33	1.39	-73.92
33	Essential oils, perfumery/toilet pre.	7.81	5.17	-33.80

Table 16. Monthly merchandise export (2 digit HS code)

(in million taka)

HS Code	Commodities	2015-16		% change from previous month
		Sep'16	Oct'16	
34	Soap, organic Surface-active agents etc.	14.18	5.62	-60.37
35	Albuminoidal substitute starches, glues etc.	11.18	17.83	59.48
36	Explosive pyrotechnic products	-	-	-
37	Photographic/cinematographic goods	0.13	-	-
38	Miscellaneous chem. products	42.9	51.26	19.49
39	Plastics and articles thereof	474.08	2136.8	350.73
40	Rubber and articles thereof	88.96	116.22	30.64
41	Raw hides & skins, leather	1815.82	1836.11	1.12
42	Articles of Leather/Animal Gut	2459.05	4160.96	69.21
43	Fur skins & artificial fur. Mfg.	-	-	-
44	Wood & art. of wood; wood charcoal	16.8	31.36	86.67
45	Cork and articles of cork	-	-	-
46	Manufactures of straw etc.	86.53	106.61	23.21
47	Pulp/ wood/fibrous cellulose materials etc.	0.12	-	-
48	Paper & paper board; art. P. pulp etc.	254.77	707.38	177.65
49	Printed books, news papers, pictures etc.	10.57	7.84	-25.83
50	Silk	-	-	-
51	Wool, fine/coarse animal hair etc.	7.43	2.67	-64.06
52	Cotton	617.41	629.91	2.02
53	Other vegetable, Textile fibres, paper/yarn etc	4348.04	5752.23	32.29
54	Man-made filaments	214.13	200.05	-6.58
55	Man-made staple fibres	84.84	117.54	38.54
56	Wadding felts nonwovens, special yarn etc.	271.79	268.67	-1.15
57	Carpet other text. floor coverings	90.35	87.41	-3.25
58	Special woven fabrics, tufted tex.fabrics etc.	234.02	291.38	24.51
59	Impregnated, coated, textile fabrics etc.	119.97	102.87	-14.25
60	Knitted or crocheted fabrics	233.35	238.72	2.30
61	Article of appl. clothing accesso. knit / crocht.	72742.91	88928.04	22.25
62	Article of appl. clothing accesso. knit/	70095.43	80061.03	14.22
63	Other made up textile articles etc.	4702.01	6162.12	31.05
64	Footwear, gaiter & like etc.	4490.63	4471.47	-0.43
65	Headgear and parts thereof	1011.5	1301.83	28.70

Table 16. Monthly merchandise export (2 digit HS code)

(In million taka)

HS Code	Commodities	2015-16		% change from previous month
		Sep'16	Oct'16	
66	Umbrellas, sun umbrellas, walk sticks etc.	-	-	-
67	Prepared feathers & down/articles etc.	113.66	86.72	-23.70
68	Art of stone, plastic, cement etc.	-	-	-
69	Ceramic products	241.9	281.84	16.51
70	Glass and glassware	6.08	14.22	133.88
71	Natural/culture pearls precious stones etc.	26.78	20.33	-24.09
72	Iron or steel	128.26	100.59	-21.57
73	Articles of iron or steel	63.82	80.85	26.68
74	Copper and articles thereof	75.56	160.31	112.16
75	Nickel and articles thereof	-	-	-
76	Aluminum and article thereof	5.64	13.36	136.88
78	Lead and articles thereof	119.6	73.32	-38.70
79	Zinc and articles thereof	27.4	23.11	-15.66
80	Tin and articles thereof	-	-	-
81	Other base metals, cermets etc.	3.08	-	-
82	Tools, cutlery Spon base Metl Part	30.17	64.25	112.96
83	Miscellaneous art of base metal.	1.61	3.74	132.30
84	Nuclear reactors, boilers etc.	339.97	963.15	183.30
85	Electrical mach. & equipment, parts etc.	201.62	464.43	130.35
86	Rail/tramway locomotives etc.	3.72	2.06	-44.62
87	Vehicles, other than rail/tram way's & parts etc.	659.2	473.56	-28.16
88	Aircraft, space craft and parts.	0.6	0.48	-20.00
89	Ships, boats & floating structures	0.57	0.95	66.67
90	Optical,photo,cinematgph.Medical inst.etc.	407.95	533.84	30.86
91	Clocks & watches & parts	1.72	3.13	81.98
92	Musical /instruments and parts etc.	0.08	0.01	-87.50
93	Arms, & ammunition and parts & accessories	-	-	-
94	Furniture, bedding, mattresses etc.	197.3	369.75	87.40
95	Toys, games & sports requisites & parts	172.23	144.69	-15.99
96	Miscellaneous mfg. articles	80.76	115.69	43.25
97	Works/ art, collectors & antiques	-	-	-
98	Goods Commodities NEC	10.82	9.55	-11.74
Total		174589	211689.1	21.25

Table 17. Monthly export of major commodities (4 digits)

(In million taka)

HS Code	Commodities	2015-16		% change from previous month
		Sep'16	Oct'16	
303	Fish frozen	201.54	222.28	10.29
304	Fish fillet, other fish meal	-	3.13	-
305	Fish dried	44.38	29.17	-34.27
306	Shrimps & prawns frozen	3371.15	4356.67	29.23
307	Molluscs	0.94	0.94	0.00
506	Bone and horn- cores	5.52	5.81	5.25
709	Vegetable fresh, chilled other	37.96	39.61	4.35
902	Tea	21.75	22.24	2.25
1006	Rice	14.39	20.91	45.31
2401	Un-manufactured tobacco	117.35	818.45	597.44
2710	Petro oil/oil bitum minrl, nec	144.85	739.29	410.38
3003-004	Pharmaceutical product	499.34	541.09	8.36
3901-926	Plastic & articles thereof	474.03	2136.71	350.75
4102	Raw hides & skin of sheep's or lambs	0.34	-	-
4103	Raw hides and skin other	-	4.11	-
4104	Leather Bovine/Equin W/Out hair	874.17	751.55	-14.03
4105	Tanned or crust skins of sheep or lambs	8.81	-	-
4106	Tanned or crust hides and skins or other animals	100.26	60.93	-39.23
4107	Leather hole hides and skins or crusting	293.65	213.03	-27.45
4113	Leather further prepared after tanning or crusting including parchment-dressed leather of other animals	537.20	804.11	49.69
4202	Trunks, suit-case, vanity-cases, brief cases, and other	1103.83	1716.99	55.55
4602	Basket work, wicker work, and other articles	80.74	92.16	14.14
5303	Jute and other textile bast fibres, raw or retted	990.44	1454.59	46.86
5307	Jute yarn	3027.85	3989.93	31.77
5310	Woven fabrics and jutes or of other textile bast fibres	321.03	293.15	-8.68
5607	Jute twine, cordage, roofs and cables	199.68	215.99	8.17
6101-117	Readymade garments men's women's and girls knitted and crocheted	72742.90	88928.06	22.25
6201-217	Readymade garments men's women's and girls not knitted and crocheted	70105.42	80061.01	14.20
6305	Sacks and bags, of a kind used for the packing of goods	930.26	1811.51	94.73
6401-6406	Foot ware with outer soles and uppers of rubber or of plastics and other	4490.59	4471.46	-0.43
6505	Heads and other headgear, knitted or crocheted	1004.20	1295.94	29.05
Total		161744.6	195100.8	20.62

Table 18. Monthly merchandise import (2 digit HS code)

(In million taka)

H S Code	Commodities	2015-16		% change From previous month
		Sep'16	Oct'16	
1	Live animals	152.17	120.3	-20.94
2	Meat and edible meat offal	1.36	1.47	8.09
3	Fishes, crustacean and other aquatic	125.4	240.75	91.99
4	Dairy produces edible product of animal origin.	1041.32	1218.05	16.97
5	Products of animal origin	99.54	181.28	82.12
6	Live tree and other plants etc.	5.09	6.8	33.60
7	Edible vegetables, roots as tubers	2845.26	6976.1	145.18
8	Edible fruits and nuts citrus fruits	1607.84	2478.8	54.17
9	Coffee, tea, mate and spices	1740.85	1958.2	12.49
10	Cereals	14939.2	19004.24	27.21
11	Product of milling industry: malt etc.	198.48	290.36	46.29
12	Oil seeds and oleaginous fruits	692.35	1083.33	56.47
13	Lac, gums, resins , vegetable saps & extra	39.65	65.82	66.00
14	Vegetable plaiting materials	34.35	50.02	45.62
15	Animal or vegetable fats and oils	14429.8	23803.82	64.96
16	Preparations of meat or fish etc.	5.89	5.09	-13.58
17	Sugar and sugar confectionery	8132.48	3753.5	-53.85
18	Cocoa and cocoa preparation	72.06	82.42	14.38
19	Preparations of cereals, flour, starch etc.	519.76	524.36	0.89
20	Preparations of vegetable, fruits, nuts, etc.	56.06	36.73	-34.48
21	Misc. edible preparations	496.2	401.88	-19.01
22	Beverages, spirits and vinegar	46.2	106.48	130.48
23	Residues & waste from the food industries	4313.38	4637.22	7.51
24	Tobacco mfg tobacco substitutes	90.49	3.86	-95.73
25	Salt, sulphur, etc. and plastering metals stone cement	5912.31	6605.05	11.72
26	Ores, slag and ash	625.36	448.71	-28.25
27	Mineral, fuels/oils etc.	40329.2	41139.01	2.01
28	Inorganic. Chem.: compounds of specious metals etc.	2390.64	2656.86	11.14
29	Organic Chemicals	3975.18	4842.91	21.83
30	Pharmaceutical products	1814.42	2167.01	19.43
31	Fertilizers	6491.17	6618.18	1.96
32	Tanning/dyeing ext; dye pigments etc.	3809.78	4196.35	10.15
33	Essential Oils, perfumery/toilet pre.	689.1	654.91	-4.96
34	Soap, organic surface-active agents etc.	890.14	1087.95	22.22

Table 18. Monthly merchandise import (2 digit HS code)

(In million taka)

H S Code	Commodities	2015-16		% change from previous month
		Sep'16	Oct'16	
35	Albuminoidal substitute starches, glues e	597.53	625.46	4.67
36	Explosives pyrotechnic products etc.	44.56	1.4	-96.86
37	Photographic/cinematographic goods	264.55	314.44	18.86
38	Miscellaneous chem. products	3452.7	3818.25	10.59
39	Plastics and articles thereof	11928.9	12076.55	1.24
40	Rubber and articles thereof	2052.75	2256.1	9.91
41	Raw hides & skins, leather	1011.46	1396.03	38.02
42	Articles of Leather/Animal gut	193.42	312.61	61.62
43	Fur skins & artificial fur. Mfg.	0.38	4.23	1013.16
44	Wood & art. of wood; wood charcoal	587.92	1146.19	94.96
45	Cork and articles of cork	0.42	1.86	342.86
46	Manufactures of straw etc.	2.61	3.31	26.82
47	Pulp/ wood/fibrous cellulosic materials etc.	1391.63	1212.95	-12.84
48	Paper & paper board; art. Paper pulps etc.	3947.68	4192.63	6.20
49	Printed Book, News paper & picture	200.61	314.63	56.84
50	Silk	8.44	20.33	140.88
51	Wool, fine/coarse animal hair etc.	96.39	69.94	-27.44
52	Cotton	40683.1	46152.97	13.45
53	Other vegetabe, textile fibres, paper/yarn etc.	224	358.15	59.89
54	Man-made filaments	7171.67	8377.19	16.81
55	Man-made staple fibres	9719.52	10524.42	8.28
56	Wadding felts non-wovens, special yarn etc.	377.79	372.6	-1.37
57	Carpet other text. floor coverings	33.17	32.21	-2.89
58	Special woven fabrics, tufted textile fabrics etc.	1050.59	1200.08	14.23
59	Impregnated, coated, textile fabrics etc.	863.67	1154.34	33.66
60	Knitted or crocheted fabrics	3441.77	4595.94	33.53
61	Article of apparl. clothing accessor. knit /crocht.	108.72	142.26	30.85
62	Articl of apparl.clothing accessor.n-knit/ crocht.	5188.32	5669.03	9.27
63	Other made up textile articles etc.	258.45	536.79	107.70
64	Footwear, gaiter & like etc.	918.33	1177.45	28.22
65	Headgear and parts thereof	23.44	25.02	6.74
66	Umbrellas, sun umbrellas, walk sticks etc.	22.15	1.95	-91.20

Table18. Monthly merchandise import (2 digit HS code)

(In million taka)

H S Code	Commodities	2015-16		% change from previous month
		Sep'16	Oct'16	
67	Prepared feather & down articles	46.09	24.32	-47.23
68	Art of stone, plastic, cement etc.	366.95	384.76	4.85
69	Ceramic products	616.79	1131.02	83.37
70	Glass and glassware	572.37	572.83	0.08
71	Natural/culture pearls & precious stones	44.94	70.98	57.94
72	Iron or steel	17657	15076.57	-14.61
73	Articles of iron or steel	2905.78	5314.02	82.88
74	Copper and articles thereof	1152.56	1217.22	5.61
75	Nickel and articles thereof	6.15	50.65	723.58
76	Aluminum and article thereof	1565.83	1932.07	23.39
78	Lead and articles thereof	344.7	375.71	9.00
79	Zinc and articles thereof	725.84	1232.27	69.77
80	Tin and articles thereof	-	40.95	-
81	Other base metals, cermets etc.	22.75	34.12	49.98
82	Tools, implements, cutlery etc.	250.33	297.49	18.84
83	Miscellaneous art of base metal.	478.09	619.4	29.56
84	Nuclear reactors, boilers etc.	39179.8	38703.86	-1.21
85	Electrical mach. & equipment, parts etc.	16764.1	20066.45	19.70
86	Rail/tramway locomotives etc.	2673.88	1171.3	-56.19
87	Vehicles, other than rail/tram way's & parts etc.	7534.72	14042.26	86.37
88	Aircraft, space craft and parts.	67291.9	6702.83	-90.04
89	Ships, boats & floating structures	2993.77	8122.99	171.33
90	Optical, Photograph, Cinematograph,Medical Inst.	2823.22	4267.2	51.15
91	Clocks & watches & parts.	46.34	46.63	0.63
92	Musical /instruments and parts etc.	4.37	5.77	32.04
93	Arms, & ammunition and parts & accessories	863.88	1352.18	56.52
94	Furniture, bedding, mattresses etc.	721.7	938.29	30.01
95	Toys, games & sports requisites & parts etc.	211.3	252.85	19.66
96	Miscellaneous mfg. articles	1735.72	2039.7	17.51
97	Works/ art, collectors & antiques	1.59	0.85	-46.54
98	Goods commodities nec	1.96	3.33	69.90
Total		384083	371626	-3.24

Table 19. Monthly import of major commodities (4 digits)

(In million taka)

H S Code	Commodities	2015-16		% change From previous month
		Sep'16	Oct'16	
401	Milk & cream	2.84	1.12	-60.56
703	Onion & Garlic	1561.39	1919.39	22.93
713	Dried leguminous vegetable	1046.61	4514.69	331.36
804	Dates	13.32	153.99	1056.08
806	Grapes	150.36	248.26	65.11
808	Apples	880.24	1220.12	38.61
904	Pepper	271.54	424.19	56.22
1001	wheat	11874.53	13138.30	10.64
1006	Rice	117.27	310.21	164.53
1108	Starches	173.35	266.44	53.70
1201-1212	Oil seeds	692.38	1083.34	56.47
1507	Soya bean oil	2780.14	9417.07	238.73
1511	Palm Oil	11375.37	13954.75	22.68
1701	Sugar	8049.53	3689.71	-54.16
2401	Un-manufactured tobacco	77.77	-	-
2523	Cement	4083.94	4118.16	0.84
2710	Petroleum product	33815.44	36378.19	7.58
2801-2851	In organic Chemicals	2388.56	2649.75	10.94
2901-2942	Organic Chemicals	3975.17	4788.85	20.47
3101-3105	Fertilizers	6491.17	6618.18	1.96
3201-3215	Tanning & dyeing	3809.79	4196.36	10.15
3801-3825	Chemical product	3452.53	3818.23	10.59
3901-3926	Plastic & articles thereof	11928.81	12076.52	1.24
4801-4823	Paper & paper board	3947.61	4192.65	6.21
5201-5203	Raw cotton	11853.95	12716.34	7.28
5205-5207	Cotton yarn	6017.14	6671.35	10.87
5208-5212	Cotton fabric	22772.30	26712.26	17.30
5402-5406	Synthetic yarn	2632.00	2772.93	5.35
5407-5408	Synthetic fabric	3690.42	4598.35	24.60
5504-5507	Staple fibre	783.59	779.60	-0.51
5509-5511	Yarn of staple fibre	2185.36	2185.05	-0.01
5512-5516	Fabric of staple fibre	4668.86	5427.81	16.26
7201-7229	Iron & steel	17656.99	15076.56	-14.61
7301-7326	Article of iron & steel	2905.79	5314.01	82.88
7601-7616	Aluminum & article thereof	1565.72	1932.01	23.39
8402-8485	Machinery & parts	39091.45	38654.80	-1.12
8501-8548	Electrical goods	16773.05	20066.47	19.64
8607-8609	Rail, tramway, locomotive	117.86	168.08	42.61
8701-8716	Vehicle	7534.70	14042.24	86.37
8902,8903,8908	Ships, boat, floating structure	2395.76	5250.13	119.14
9001-9033	Optical, Photo, Cinema etc.	2823.24	4267.19	51.15
Total		258428	295814	14.47

Table 20. Re-exports Value, October -2016 by 2 digit HS Code.

HS CODE	HS DESCRIPTIONS	(In million taka)
	Total: Re-exports	248.72
28	Inorgnchem:Organ/inorgancomp	0.18
29	Organic Chemicals	0.95
38	Miscellaneous Chemical product	1.94
39	Plastics and articles thereof	0.26
40	Rubber & articles thereof	0.38
41	Raw hides & skins of bovine	4.96
42	Articles of leather/animal gut	1.46
48	Paper & paperboard art of p/pulp	0.04
52	Cotton	0.13
54	Man-made Flaments;strip & Tex	0.75
59	Impregnated, coated,covered/ text	1.92
63	Otr made up text article set rag	2.87
64	Footwear,gaiter & like;parts	3.51
73	Articles of iron & steel	35.47
74	Copper & articles thereof	3.32
82	Tool cut spon base metl & parts	15.17
83	Miscellaneous art of base metl	0.35
84	Nuclear rect boil mach & parts	132.23
85	Electrcl machinery eqipmnt part	38.71
86	Rail/tramway locomotive parts	1.80
87	Vechicle otr rail/tram rol-stoc	0.34
90	Optical , photo, cinma surgi apts	0.21
96	Miscellaneous mfg article	1.76

Table 21. Re-Import Value, October -2016 by 2 digit HS Code.

HS CODE	HS DESCRIPTIONS	(In million taka)
	Total: Re-Import	6.77
73	Articles of iron & steel	0.71
84	Nuclear rect boil mach & parts	5.51
85	Electrcl machinery eqipmnt part	0.55

Table 22 . Temporary export Value, October -2016 by 2 digit HS Code

HS CODE	HS DESCRIPTIONS	(In million taka)
	Total : Temporary- Exports	256.39
39	Plastics and articles thereof	0.27
40	Rubber & articles thereof	0.27
73	Articles of iron and steel	1.09
84	Nuclear rect boil mach & parts	51.77
85	Electrcl machinry eqipmnt part	135.99
87	Vechicle otr rail/tram rol-stoc	0.88
88	Aircraft,spacecraft part	0.46
90	Optical, photo, cinema surgi apt	1.74
94	Furniture, bedding, mattresses	63.92

Table 23 . Temporary Import Value, October -2016 by 2 digit HS Code

HS CODE	HS DESCRIPTIONS	(In million taka)
	Total : Temporary- Import	145.61
03	Fish & crustacean otr aqutic	1.47
12	Oil seeda & oleaginous fruits	0.06
29	Organic Chemicals	0.09
39	Plastics and articles thereof	0.11
40	Rubber & articles thereof	0.01
70	Glass and glassware	0
72	Iron and steel	0.03
73	Articles of iron and steel	1.30
76	Aluminium and article thereof	0
82	Tool cut spon base metl & parts	1.39
83	Miscellaneous art of base metl	0.02
84	Nuclear rect boil mach & parts	5.95
85	Electrcl machinry eqipmnt part	120.16
90	Optical, photo, cinema surgi apt	14.12
94	Furniture, bedding, mattresses	0.90