

Census Wing

The functions of the Census Wing are as follows:

- To conduct regular and ad-hoc censuses including Population and Housing Census, Economic Census, Agriculture Census, Slum Census, Handloom Census etc.
- To conduct education and literacy related surveys.
- To conduct different socio-economic and community surveys, which is also mandate of Census Wing.
- To issue No Objection Certificate (NOC) to conduct surveys and censuses to different government agencies as per Statistics Act, 2013.
- To prepare and publish population projections for national development planning and policy formulation and review.
- To develop Integrated Multipurpose Sample (IMPS)
- To prepare and update GIS map and shape files and integration with updated Geocodes.
- To prepare Poverty Map through Small Area Estimation.

Industry and Labour Wing

Industry and Labour Wing is exclusively responsible for generating industrial and labour statistics of the country. The functions of the wing are provided below:

- To generate labour market indicators through Labour Force Survey (LFS).
- To develop and update Business Register (BR).
- To conduct Survey on Manufacturing Industries (SMI).
- To conduct Establishment and Institutional Survey (EIS).
- To develop National Statistical Classifications (Industry, Occupation and Product Classifications).
- To generate Informal Sector Statistics (ISS).
- To generate ICT Indicators (Access and use at households and individuals).

Agriculture Wing

Agriculture wing is responsible to produce and disseminate statistics on agricultural sector in Bangladesh. Major functions of the wing are:

- To produce and disseminate statistics on agriculture sector.
- To compile annual estimates of acreage, production and yield rate of six major crops-Aus, Aman, Boro, Wheat, Jute and Potato and 120 minor crops.
- To prepare seasonal forecasts of the area under cultivation and production of major crops.

Latest publications of BBS



For more information

Statistics and Informatics Division (SID)

Parishankhyan Bhaban (10th Floor)

E-27/A, Agargaon, Dhaka-1207

www.sid.gov.bd

Bangladesh Bureau of Statistics (BBS)

Parishankhyan Bhaban

E-27/A, Agargaon, Dhaka-1207

Tel: +88 02 55007056, Fax: +88 02 55007069

www.bbs.gov.bd



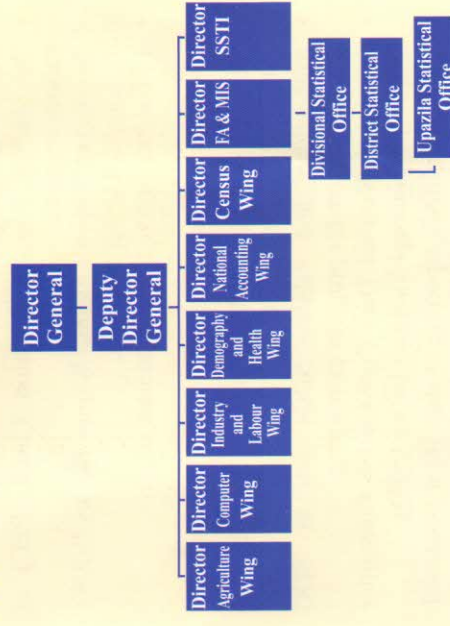
Bangladesh Bureau of Statistics
Statistics and Informatics Division
Ministry of Planning

Bangladesh Bureau of Statistics (BBS), the National Statistical Organization (NSO) of the country, is responsible to provide official statistics for effective policy formulation and decision making. BBS runs its activities under Statistics Act 2013.

The BBS is headed by the Director General and assisted by a Deputy Director General, eight Deputy Directors, fourteen Joint Deputy Directors, a number of Deputy Directors, and Statistical Officers and other staffs. The present strength of the BBS stands at 4333 and performs its functions with the following eight wings:

- (1) Census Wing
- (2) Industry and Labour Wing
- (3) Agriculture Wing
- (4) National Accounting Wing
- (5) Demography and Health Wing
- (6) Computer Wing
- (7) Finance, Administration, & Management Information System (FA & MIS)
- (8) Statistical Staff Training Institute (SSTI).

Each of the eight wings is led by a Director. The Divisional, District and Upazila Statistical Offices (including metropolitan thana) are administered by FA & MIS.



জনকল্যাণে সঠিক ও সময়োপযোগী পরিসংখ্যান

National Accounting Wing

The National Accounting Wing:

- Compiles and disseminates Gross Domestic Product (GDP) by expenditure and production approach at both current and constant prices for each fiscal year.
- Compiles and disseminates data on Gross National Income (GNI), Gross Disposable Income (GDI), Consumption, Savings and Investment.
- Compiles and produces Consumer Price Index (CPI), Price Index of Building Materials, House Rent Indices, Wage Rate Index (WRI), Quantum Index of Industrial Production (QIIP) for large and small industries and Producer Price Index (PPI) on monthly basis.
- Collects and compiles foreign trade statistics.
- Implements International Comparison Programme (ICP) under RETA of ADB.
- Works for improving General Data Dissemination System (GDDS) under the framework of IMF.

Demography and Health Wing

The Demography and Health Wing is responsible to collect, compile, analyse and disseminate data on demography and health related indicators as well as socio-economic condition of the people. The broad functions of the wing are as follows:

- To conduct inter-censal demographic surveys on vital-events, such as fertility, mortality, life expectancy, disability, nuptiality etc.
- To generate data on health conditions, morbidity, status of nutrition etc.
- To conduct Post Enumeration Check (PEC) of various censuses.
- To conduct Violence Against Women Survey (VAW)
- To compile Gender Statistics.
- To conduct various socio-economic surveys.

BBS in SDGs monitoring

- Generate and provide data for 105 SDG indicators out of 232 unique indicators.
- Authenticate and validate SDGs data in 'SDG Tracker' system for progress monitoring.
- Support to National Data Coordination Committee (NDCC) as National Statistics Office (NSO).
- Coordinate SDGs reporting as data focal point with the UN system and different custodian agencies.
- Provide technical support to different national data providing agencies.

Computer Wing

The Computer Wing provides all types of IT support to subject matter wings of BBS. It is responsible for data capture, processing and tabulation of different censuses and surveys.

- Decentralization of ICT Process in Statistical System.
- Capacity Building of ICT Professionals.
- Development of Efficient Data Management System & Maintenance.
- Time-Need Global ICT Cooperation & Data Development (using GIS).
- Statistical Data Management System Software Including Statistical Data and Metadata exchange (SDMX).
- Setup of National Data Resource & Processing Centre
- Data Archive, Networking & moving forward to Cloud Computing.

Finance, Administration and Management Information System (FA & MIS)

FA & MIS manages all the administrative and financial matters of BBS. The functions of FA & MIS includes general administration, finance and budget management, maintenance of office equipments and vehicles, staff welfare activities, recruitment, promotion and posting of employees, administration of field offices at divisional, district and upazila (including metro thana) levels.

Statistical Staff Training Institute (SSTI)

The functions of SSTI are as follows:

- Imparts regular training programme to all officials of BBS.
- Provide foundation training to newly recruited officials of BBS.
- Most important training are basic statistics, administration, computer literacy, budgeting, project planning and development, public procurement etc.
- Also offers demand driven specialized courses for the officials and staff of BBS.

National Strategy for the Development of Statistics (NSDS)

NSDS is a comprehensive, inclusive, pragmatic and nationally-owned policy document for strengthening the National Statistical System (NSS). The document is prepared by Bangladesh Bureau of Statistics (BBS) under the close guidance and supervision of the Statistics and Informatics Division (SID), Ministry of Planning.

The major objectives of the NSDS are:

- i. the systematic development of National Statistical System (NSS) of Bangladesh.
- ii. to produce timely, accurate and reliable statistics to support evidence-based decision making and policy formulation and

iii. to integrate statistics into mainstream of planning process i.e. Perspective Plan, FYPs, SDGs, etc.

At present, the NSDS is being implementing under the 'NSDS Implementation Support Project'.

Major Censuses of BBS

- Population and Housing Census
- Agriculture Census
- Economic Census

Core surveys of BBS

- Household Income and Expenditure Survey (HIES)
- Labour Force Survey (LFS)
- Survey of Manufacturing Industries (SMI)
- Agriculture Crop Production Survey (ACPS)
- Price and Wage Rate Survey (PAWARS)
- Monitoring the Situation of Vital Statistics of Bangladesh (MSVSB)
- Health and Morbidity Status Survey (HMSS)
- Multiple Indicator Cluster Survey (MICS)
- Child and Mother Nutrition Survey (CMNS)
- Literacy Assessment Survey (LAS)

On-going projects of the BBS

- National Household Database (NHD) Project
- Strengthening capacity of BBS for collecting data on Population and Development (Stat4Dev) Project
- Handloom Census 2017 Project
- Monitoring the Situation of Vital Statistics of Bangladesh (MSVSB) project
- Agriculture (crops, fisheries and livestock) Census 2018 project
- Agriculture and Rural Statistics Survey (ARSS) 2017 project
- Household Income and Expenditure Survey (HIES) Project
- Data conversion, Metadata preparation, Preservation & time series data compilation project
- Digitization of BBS publications and online secondary data collection project

Partnerships

- World Food Programme (WFP)
- United Nations Population Fund (UNFPA)
- German Development Cooperation (GIZ)
- United Nations Children's Fund (UNICEF)
- The World Bank (WB)
- International Labour Organization (ILO)
- European Union (EU)
- World Health Organization (WHO)
- Food and Agriculture Organization of the United Nations (FAO)