



Action Plan and Methodological Guidelines for Data Generation and Disaggregation for Monitoring and Evaluation of SDGs

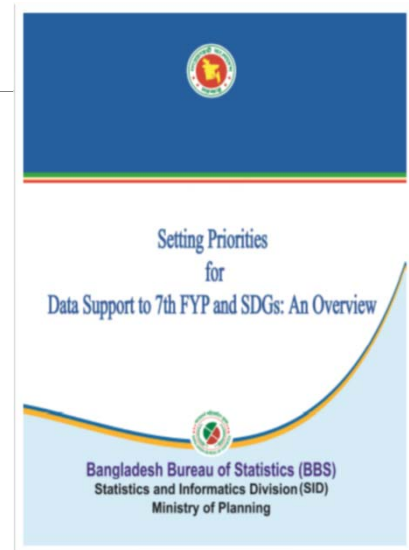


Md. Alamgir Hossen
Deputy Director
and
Member-Secretary, SDG Cell
Bangladesh Bureau of Statistics (BBS)



Background

Under supervision and guidance of Statistics and Informatics Division (SID), Bangladesh Bureau of Statistics (BBS), as the National Statistical Office (NSO), has completed a **rigorous exercise on Data Gaps for SDGs** monitoring and the first analytical report was published in April, 2016 based on the **targets**

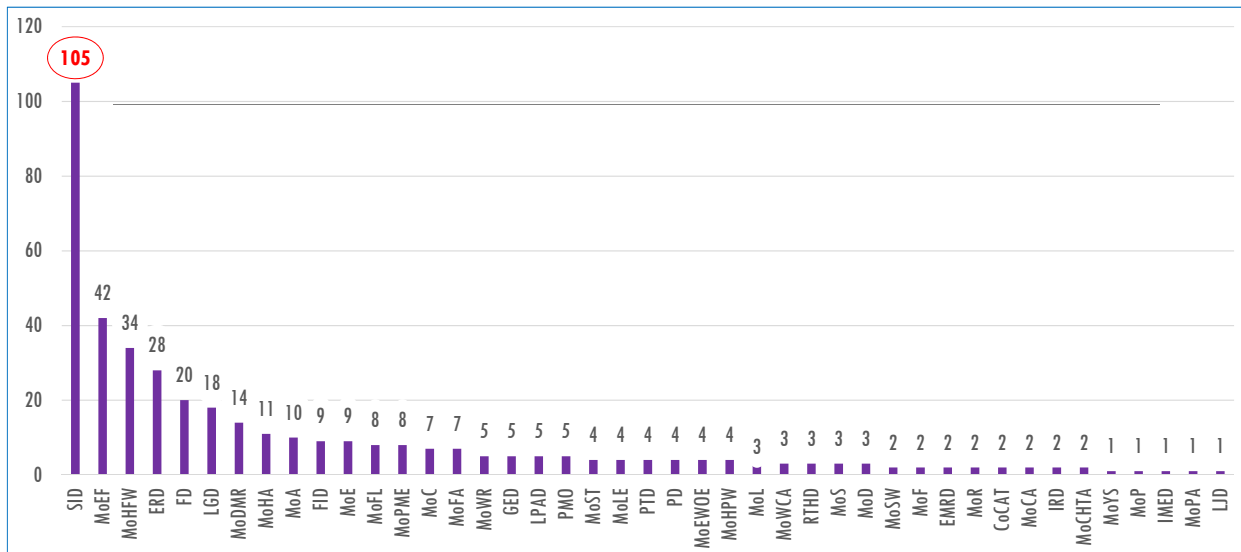


cont... Background

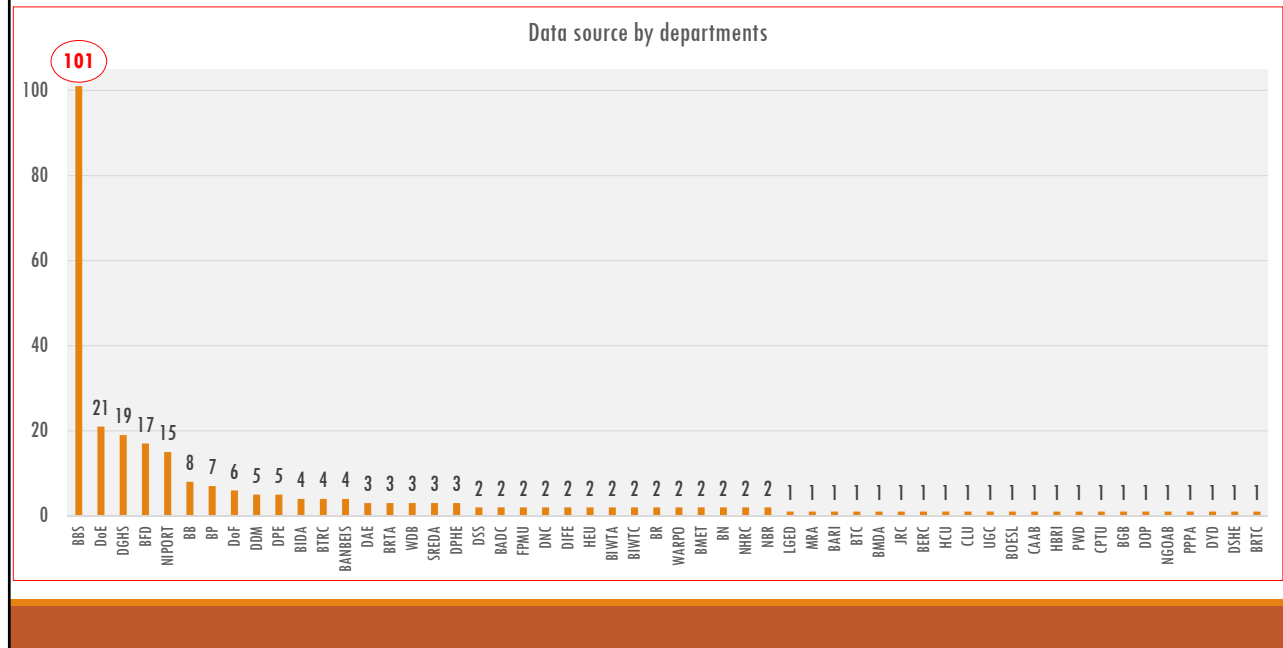


Based on the publication, General Economics Division (GED) has conducted workshops and rigorous consultation with most of the data generating relevant Ministries/Divisions and agencies including BBS and prepared a national data gap analysis and Monitoring and Evaluation Framework

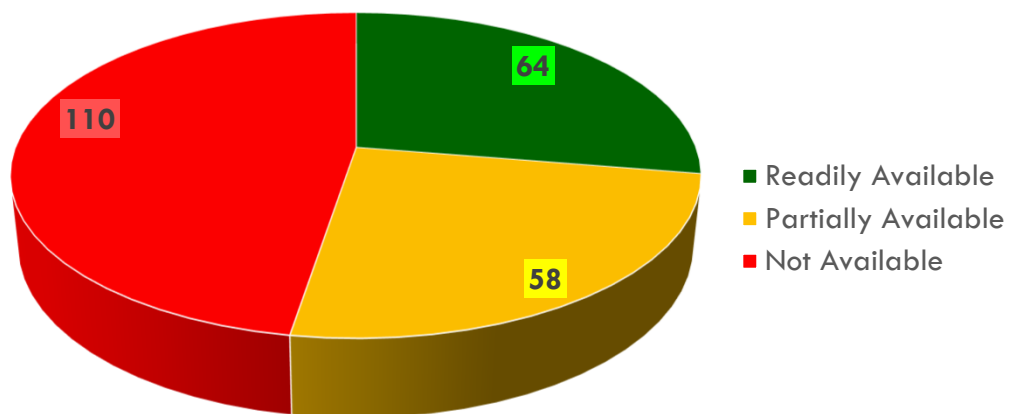
Ministries/Divisions responsible for data source



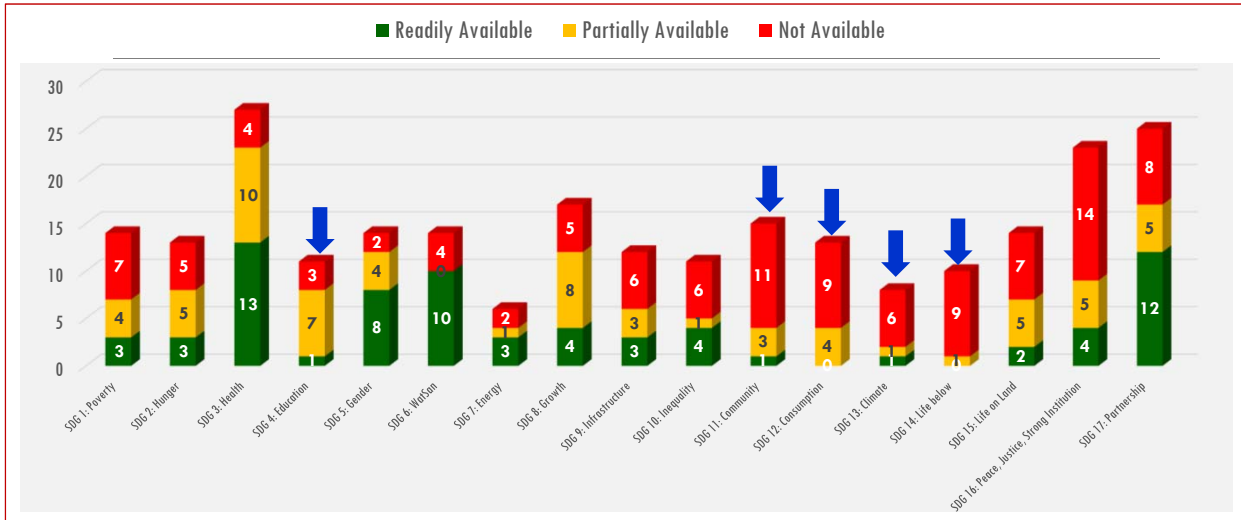
Departments/Agencies responsible for SDG Data Source



Data Availability in Bangladesh



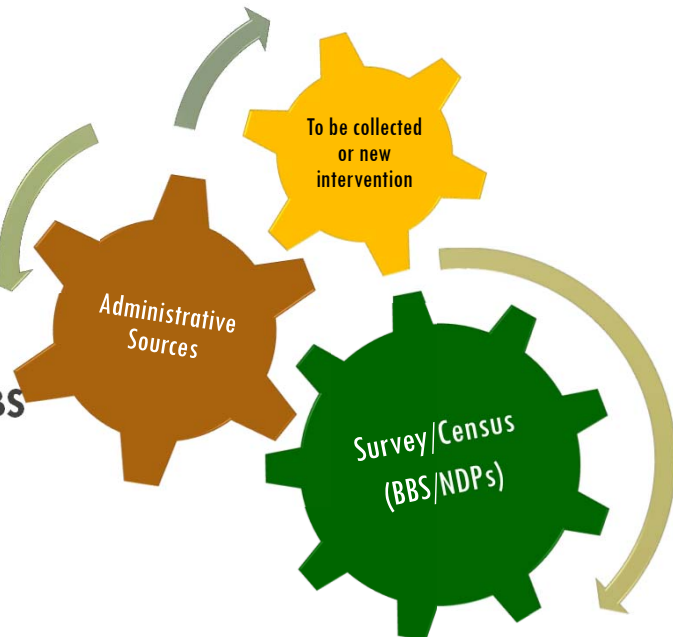
Data Availability SDGs indicators in Bangladesh



7

Sources of Data

- Data available in BBS – Official data
- Data available outside BBS – Administrative data
- Data not available (to be collected and developed)



Definitions of Tier Classification

- Tier I** : Indicator conceptually clear, established methodology and standards available and data regularly produced by countries.
- Tier II** : Indicator conceptually clear, established methodology and standards available but data are not regularly produced by countries.
- Tier III** : Indicator for which there are no established methodology and standards or methodology/standards are being developed/tested.

9

Tier classification Status of SDG indicators

Tier	Conceptually clear	Internationally established methodology and standards	Regularly produced	# of Indicators
Tier I	☑	☑	☑	93
Tier II	☑	☑	?	72
Tier III	?	?	?	62

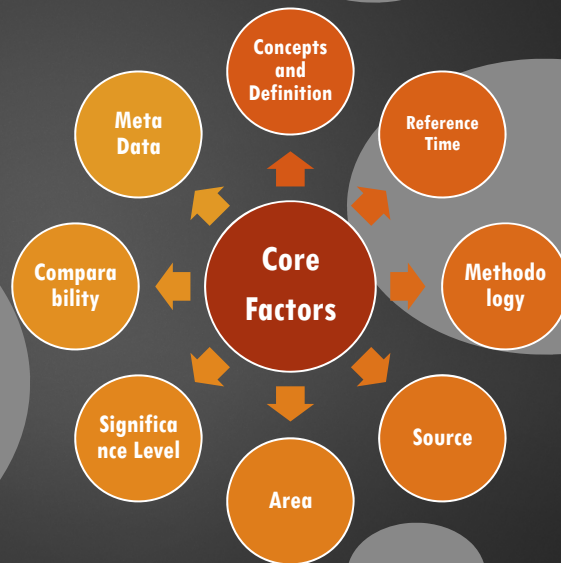
* 5 indicators with more than one tier assigned

10

Data Interpretation



- Before using data objective should be defined clearly
- Core factors must be explored before using data
- 5W1H (who, what, where, when, why, how)

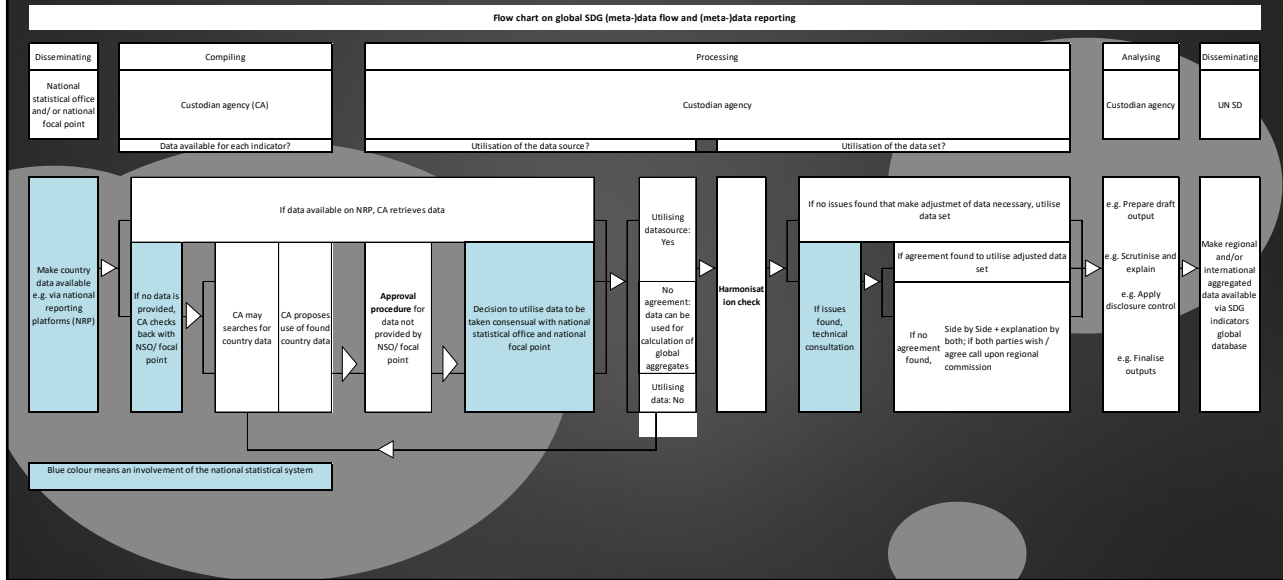


NSO in data coordination

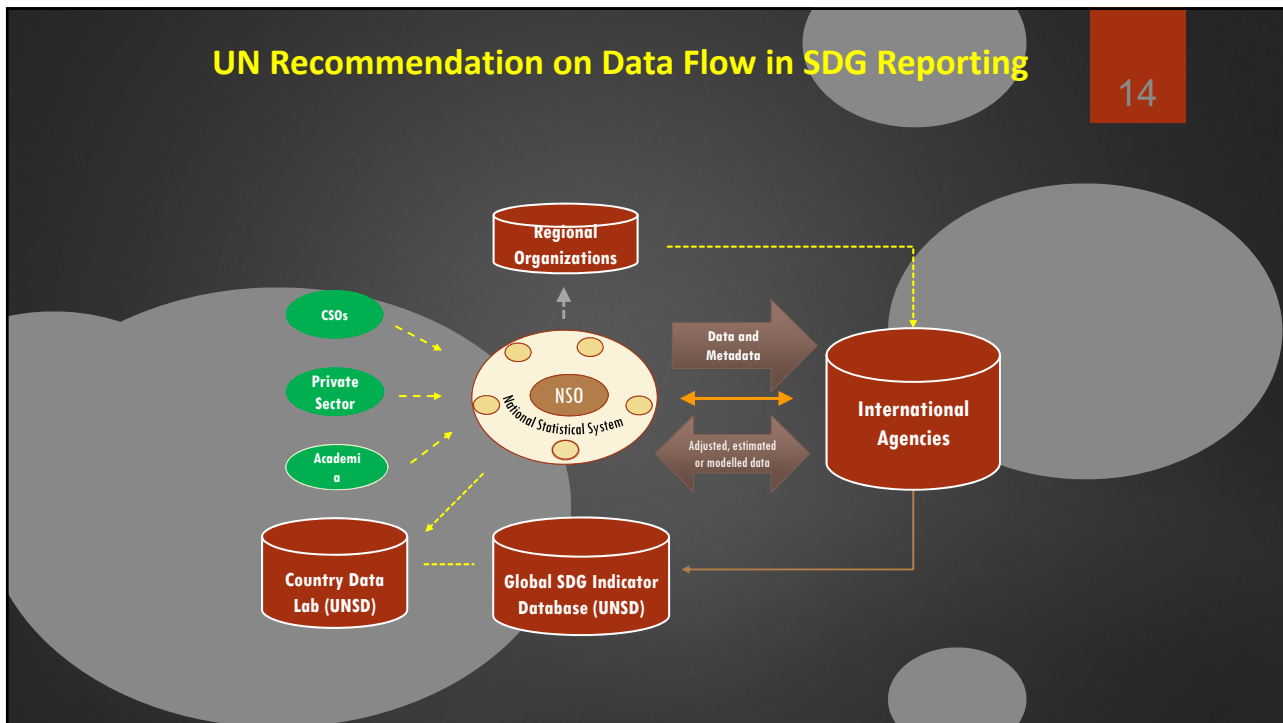
*“...global monitoring should be based on **comparable** and **standardized** national data obtained through well-established reporting mechanisms from countries to the international statistical system. Such mechanisms can be improved by strengthening the coordination function of national statistical offices and/or other national institutions. In order to fill data gaps and improve international comparability, countries will need to adopt internationally agreed standards at the national level, strengthen national statistical capacity and improve reporting mechanisms. International organizations and regional mechanisms play a significant role in facilitating the process.”*

[Report of the Secretary-General- E/2016/75]

Flow chart on global SDG (meta-)data flow and (meta-)data reporting



UN Recommendation on Data Flow in SDG Reporting

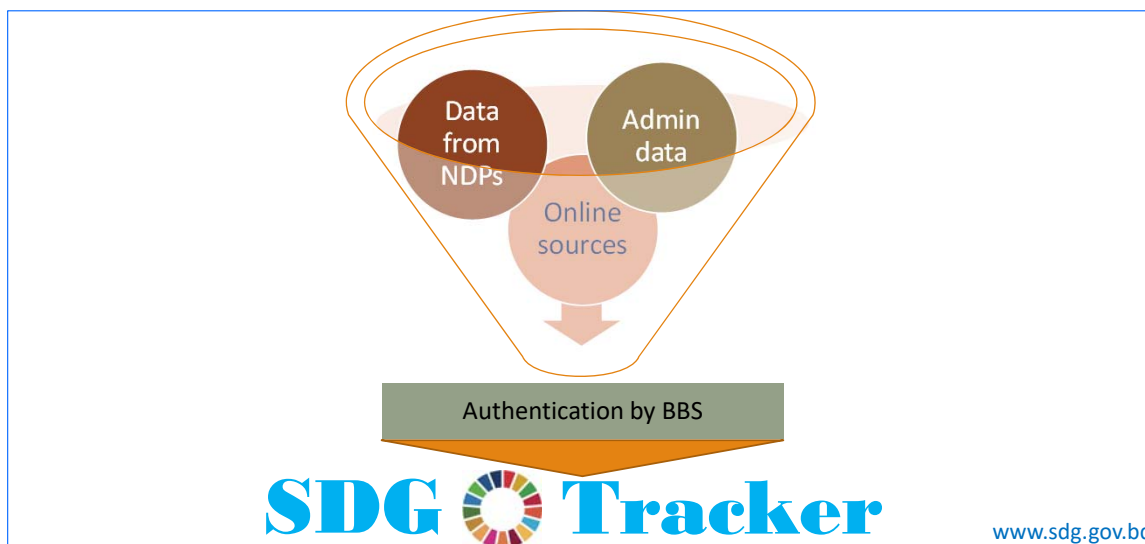


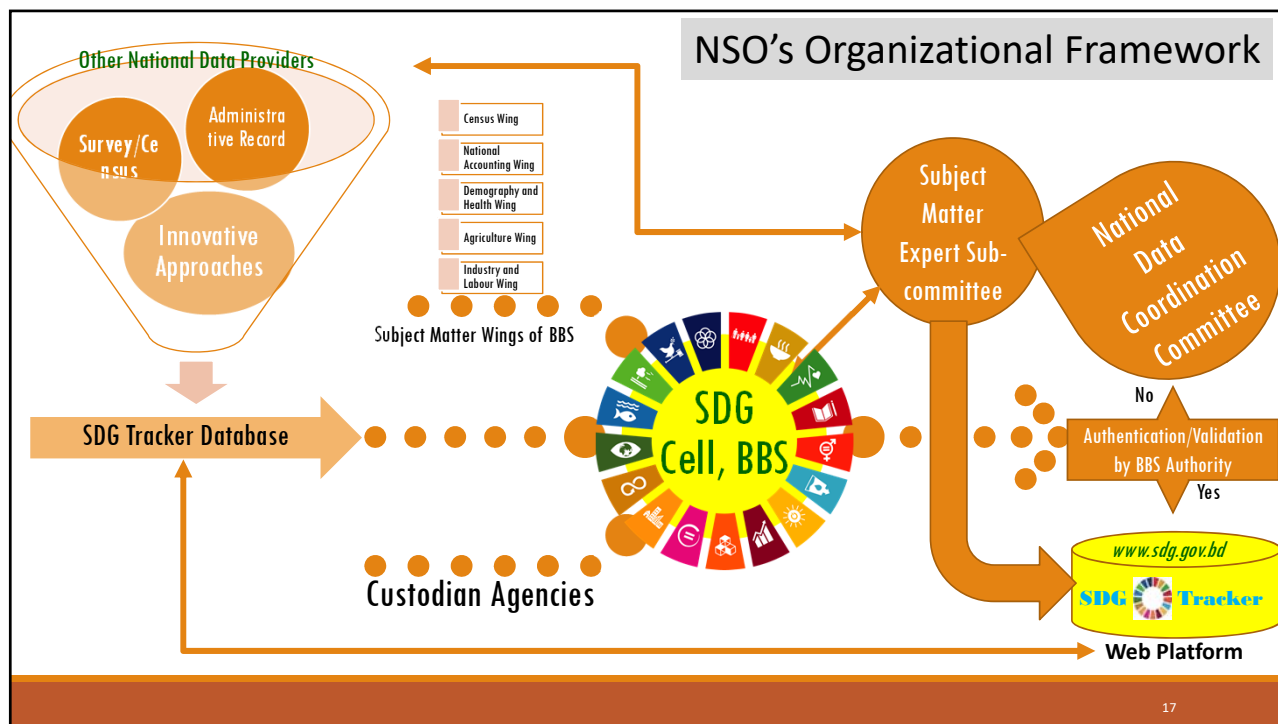
Data disaggregation

15

- ▶ The specific dimensions upon which the indicators are to be disaggregated included:
 - ▶ Sex and gender
 - ▶ Age (5 years group/neonatal/children/young/adult/aged etc.)
 - ▶ Income (quintiles/deciles/categories)
 - ▶ Location or spatial varieties (urban, rural, metropolitan, districts, upazila etc.)
 - ▶ Disability (Categories/Status)
 - ▶ Ethnicity and indigenous status (Status/Category)
 - ▶ Economic activity (Occupation/Farm/Non-farm/sectoral etc.)
 - ▶ Migrant status (International migrants/internally displaced etc.)

Authentication of Data for SDGs





Challenges: Data Support to SDGs

- Production of **disaggregated and frequent statistics** by age, sex, disability and sub-national level
- **Comparability of Data**: Harmonizing the concepts, definitions, methodologies etc. following international standards
- Availability of baseline data
- Conducting a large number of **new surveys**
- **Technical support** availability for regular monitoring
- Introduction of **modern technology** in collection of statistical data and quick dissemination

Way Forward

- **Leading Role of BBS** in generation and validation of the official data as NSO
- Preparation of methodological guidelines for data **disaggregation and frequency**
- **Conducting new surveys** identified for data generation- review of questionnaires are also required
- **Mining of microdata** of different survey/census/administrative sources
- **Developing partnership** with other national and international organizations
- Formulation of **Guidelines for Administrative Data** generation for SDGs indicators
- Implementation of **Statistics Act, 2013** and National Strategy for the Development of Statistics (NSDS)
- Role of **National Data Coordination Committee (NDCC)** to be ensured
- Developing the capacity of manpower- **more data analytics/data scientists**

Surveys need to conduct by BBS to Support SDGs

1. Literacy Assessment Survey
2. District Community Survey
3. Access to Public Transport Survey
4. Citizen Household Perception Survey
5. Child and Mother Nutrition Survey
6. Health and Morbidity Status Survey
7. Survey on Manufacturing Industries
8. Child Labour Survey
9. Bangladesh Disaster Survey
10. Survey for Tourism Satellite Account

National Activities facilitated by UNSD

- 🌐 Develop SDG monitoring implementation strategy
- 🌐 Meetings with producers of SDG indicators
- 🌐 Engage users within and outside the government
- 🌐 Establish and maintain national data platforms
- 🌐 Compile metadata for SDG indicators
- 🌐 Analyze and explain differences between national and international SDG datasets

Template of Action Plan and Methodological Guidelines for Data Generation and Disaggregation for Monitoring and Evaluation of SDGs

Goals and targets and Indicators	Custodian Agency (ies)	Tier Classifications	Definition, Rationale, Concept, Computation Methods and formula	UN Suggested activities of data generation	UN Suggested data provider	Recent Available Data Sources	Possible future Sources	Required Disaggregation Types	Frequency of data generation	Local Indicator Group*	Timeline Action Plan for Data Publishing	Remarks
1	2	3	4	5	6	7	8	9	10	11	12	13

Local Group Classification:

Group 1 : Indicators already produced by NSS and data exist for baseline report (preferably Year 1 = 2016)

Group 2 : Indicators in an ongoing process or could be produced within the NSDS up to 2023

Group 3 : Indicators needing more efforts (methods, financing, etc.)

THANK YOU