



**Government of the People's Republic of Bangladesh**

**Monthly Release**

**Foreign Trade Statistics**

**February 2024**

**Issue-205**

**Published Date: 24<sup>th</sup> April 2024**



**BANGLADESH BUREAU OF STATISTICS (BBS)**

**Statistics and Informatics Division (SID)**

**Ministry of Planning**

## **Executive Summary**

Bangladesh Bureau of Statistics (BBS) compiles and publishes Foreign Trade Statistics (FTS) on a regular basis. This publication presents monthly trend of Bangladesh foreign trade statistics on top trading partners, essential import commodities and last twelve months scenario of major export and import goods specially for February, 2024.

Merchandise trade data of this publication are provided by National Board of Revenue (NBR) while data on services from Bangladesh Bank. Data presented in this publication are provisional and subject to revision. All these provisional data will be subsequently reviewed and revised. Revised data are being presented in next issues.

In February, 2024 total export and import of goods and services is recorded at decreased by Tk. 643.82 and decreased by Tk. 827.51 billion respectively resulting in a trade deficit at goods and services of Tk. 183.69 billion. The growth of export and import in February, 2024 decreased by 7.63 and decreased by 8.53 percent respectively comparing to January, 2024 and it is increased by 23.37 and increased by 13.35 percent respectively comparing to February, 2023.

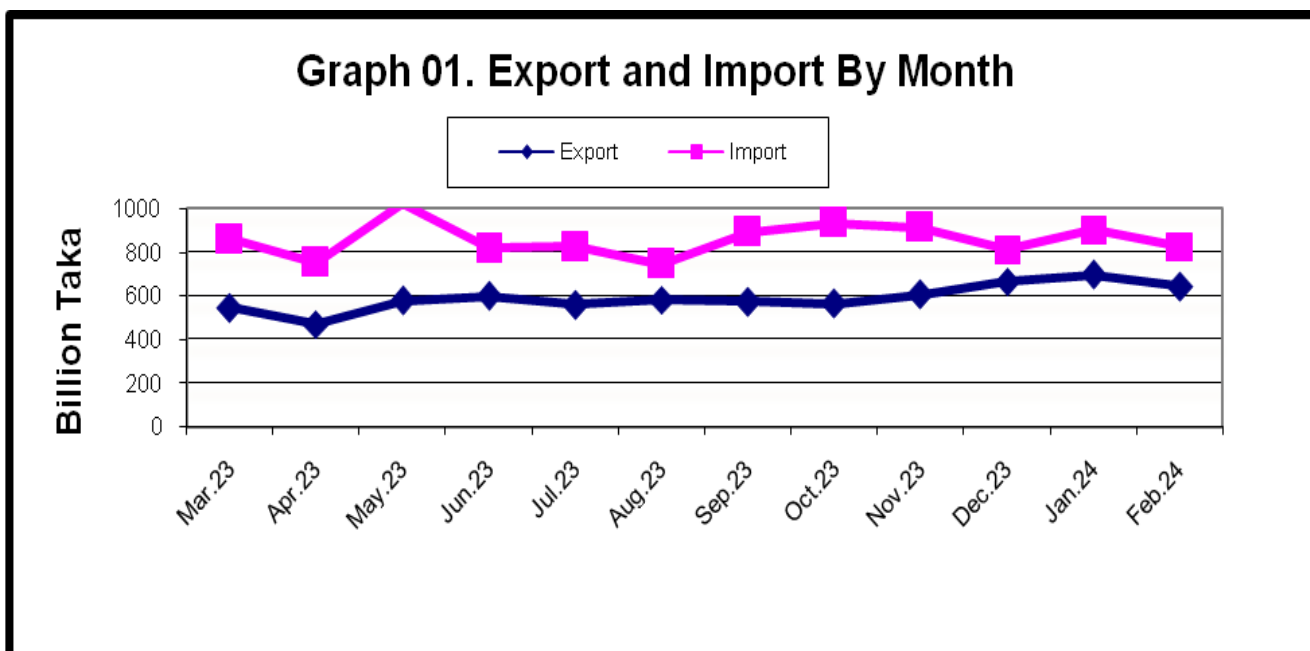
For the three months ending in February, 2024 the average of export of goods and services was Tk. 669.53 billion, while the moving average of import of goods and services was Tk. 848.60 billion resulting in an average trade deficit of Tk. 179.07 billion. For the three months ending in January, 2024 the average trade deficit was Tk. 220.25 billion reflecting average exports of Tk. 657.73 billion and average imports of Tk. 877.98 billion.

Indicators of this publication are expected to provide a good idea about the trend of export and import of the country over the previous months of a year. This monthly release would be a useful document for planners, policy makers, researchers, development partners/agencies, academicians and other stakeholders.

**Table 1: Export, import and trade deficits**

(In billion taka)

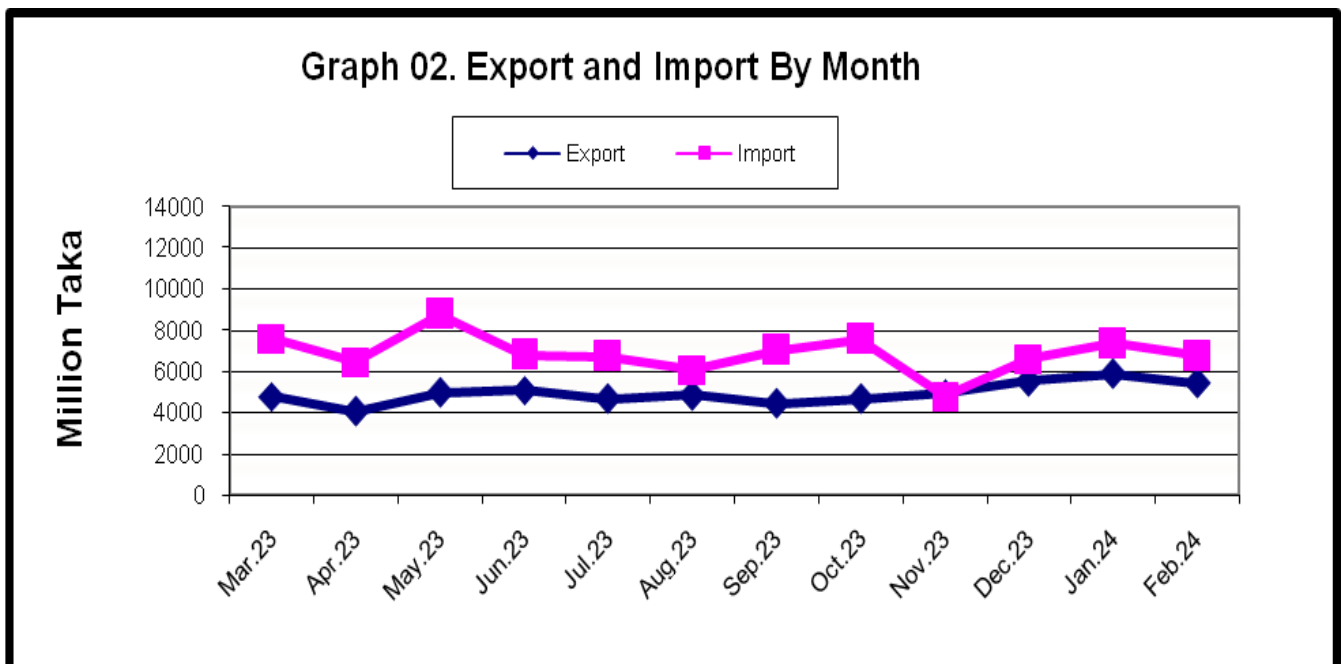
Period	Export			Import			Trade balance		
	Total	Goods	Services	Total	Goods	Services	Total	Goods	Services
<b>2021-22</b>	5427.42	4571.35	856.12	10235.39	8939.51	1295.88	-4717.92	-4367.79	-439.76
<b>2022-23</b>	6460.46	5631.73	828.73	10441.46	9195.35	1246.11	-3981.01	-3572.63	-357.19
<b>2023-24</b>									
Mar-23	545.82	478.09	67.73	861.75	757.62	104.13	-315.93	-279.53	-36.40
Apr-23	471.59	412.47	59.12	753.38	657.07	96.31	-281.79	-244.60	-37.19
May-23	578.02	512.81	65.21	1025.76	903.49	122.27	-447.74	-390.68	-57.06
Jun-23	598.98	535.59	63.39	818.52	710.08	108.44	-219.54	-174.49	-44.85
Jul-23	560.80	505.10	55.70	825.30	722.84	102.46	-264.50	-217.74	-46.76
Aug-23	582.60	526.54	56.06	747.85	657.07	90.78	-165.25	-130.53	-34.72
Sep-23	574.62	480.25	94.37	894.35	760.07	134.28	-319.73	-279.82	-39.91
Oct-23	565.31	509.40	55.91	935.26	825.20	110.06	-369.59	-316.14	-54.29
Nov-23	608.43	541.14	67.29	915.65	817.75	97.90	-307.22	-276.61	-30.61
Dec-23	667.79	602.89	64.90	813.64	717.39	96.25	-145.85	-114.50	-31.35
Jan-24	696.97	640.65	56.32	904.65	798.83	105.82	-207.68	-158.18	-49.50
Feb-24	643.82	591.02	52.80	827.51	733.79	93.72	-183.69	-142.77	-40.92



**Table 2: Export, import and trade deficits**

(In million US \$)

Period	Export			Import			Trade balance		
	Total	Goods	Service	Total	Goods	Service	Total	Goods	Service
<b>2021-22</b>	52792	52048	854	103096	101816	1295	-50214	-49787	-441
<b>2022-23</b>	57316	56488	828	93776	92531	1245	-36460	-36033	-417
<b>2023-24</b>									
Mar-23	4802	4734	68	7605	7501	104	-2803	-2767	-36
Apr-23	4064	4005	59	6475	6379	96	-2411	-2374	-37
May-23	4972	4907	65	8768	8646	122	-3796	-3739	-57
Jun-23	5116	5053	63	6807	6699	108	-1691	-1640	-45
Jul-23	4690	4634	56	6734	6632	102	-2044	-1998	-46
Aug-23	4865	4809	56	6092	6001	91	-1227	-1192	-35
Sep-23	4450	4356	94	7028	6894	134	-2578	-2538	-40
Oct-23	4666	4610	56	7578	7468	110	-2912	-2858	-54
Nov-23	4964	4897	67	4798	7400	98	-2531	-2502	-31
Dec-23	5542	5477	65	6618	6522	96	-1076	-1045	-31
Jan-24	5880	5824	56	7368	7262	106	-1488	-1438	-50
Feb-24	5426	5373	53	6765	6671	94	-1339	-1298	-41

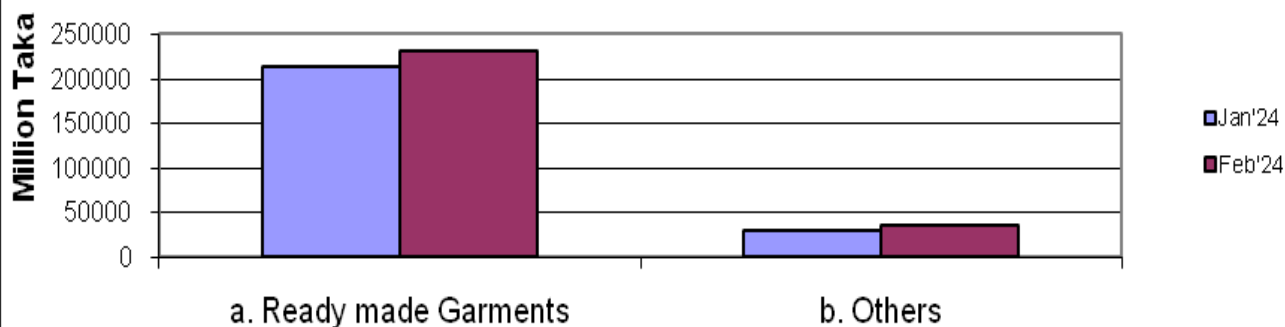


**Table 3. Percent change from the previous month (goods)**

(In million taka)

Items	2023-24		
	Jan'24	Feb'24	Percent change from the previous month
<b>1. Export (Commodities )</b>	<b>640655</b>	<b>591017</b>	<b>-7.75</b>
1. Readymade Garments	547306	496767	-9.23
2. Shrimps and prawn	2315	1754	-24.23
3. Vegetable textiles fiber/ yarn	7361	6984	-5.12
4. Made-up textiles articles	10184	10344	1.57
5. Raw hides, skins & leathers	1263	1175	-6.97
6. Raw jute	1529	1488	-2.68
7. Footwear Special woven fabrics	12078	9510	-21.26
8. Fertilizer	-	-	-
9. Hats and other head gear	3519	2590	-26.40
10. Special woven fabrics	1169	1099	-5.99
11. Others	53931	59306	9.97
<b>2. Import (Commodities)</b>	<b>798833</b>	<b>733793</b>	<b>-8.14</b>
1. Machinery & parts	57526	46749	-18.73
2. Petroleum product and oil	87402	85695	-1.95
3. Electric Machinery	46187	37253	-19.34
4. Soya bean and Palm oil	22642	28417	25.51
5. Raw cotton	33564	33086	-1.42
6. Textile fabrics	608	540	-11.18
7. Iron and steel	32540	29780	-8.48
8. Plastics and articles	31906	24311	-23.80
9. Wheat	31732	30646	-3.42
10. Fertilizer	52733	25417	-51.80
11. Others	401993	391899	-2.51
<b>3. Trade balance (1-2)</b>	<b>-158178</b>	<b>-142776</b>	<b>-9.74</b>

**Graph 03: Export of redymade garments and others in Jan'24 & Feb'24**



**Table 4. Import of Essential Commodities Quantity**

(In M. Ton)

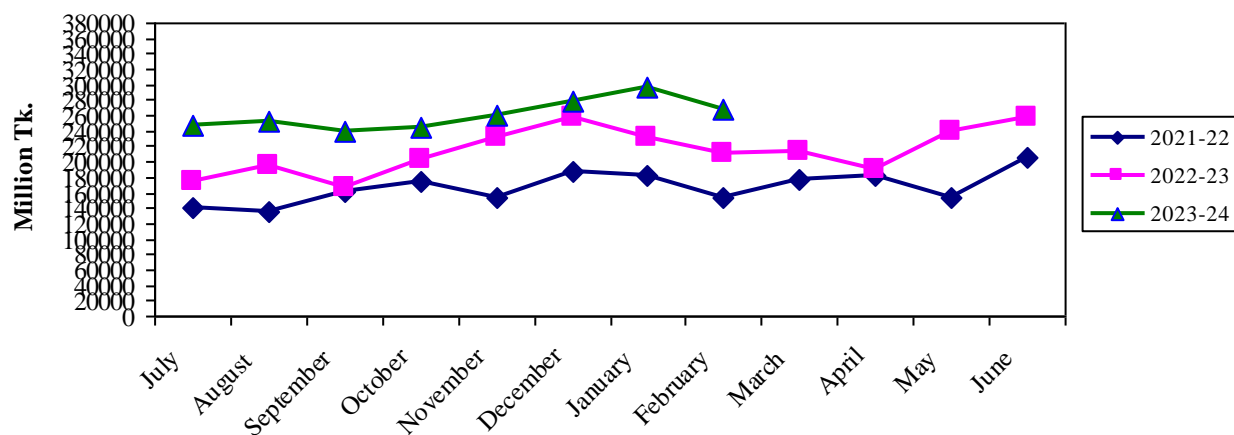
Items	2023-24			
	Jan'24	Feb'24	Percent change from the previous month	Cumulative (Feb' -24)
<b>Import (Commodities)</b>				
1. Raw sugar	219080	249139	13.72	1995900
2. Palm oil	96419	172043	78.43	2101192
3. Soya bean oil	117560	107814	-8.29	699181
4. Milk & Cream	14702	7928	-46.08	86542
5. Ginger	-	-	-	-
6. Chillies	-	-	-	-
7. Wheat	521059	425445	-18.35	2766699
8. Rice	7480	584	-92.19	14175
9. Lentil & other	70257	14918	-78.77	339358
10. Onion	4615	14807	220.85	596576
11. Garlic	18666	16771	-10.15	107766
12. Tea	101	98	-2.97	555
13. Oil seed	166294	246815	48.42	1289915
14. Gram/Anchor	9316	26021	179.32	177916
15. Turmeric	1715	3656	113.18	20119

**Table 5: Twelve months export of readymade garments during 2021-22 to 2023-24.**

(In million taka)

Month	Ready made Garments (Knitted)			Ready made Garments (Not Knitted)		
	2021-22	2022-23	2023-24	2021-22	2022-23	2023-24
July	140660	175290	246579	104214	142679	183535
August	135975	195288	253474	97954	158932	189271
September	162372	165780	239942	128967	135386	158228
October	175012	204138	244886	129679	156311	169519
November	152286	232621	260126	125082	194969	195358
December	186536	256545	277793	160055	211968	230979
January	182230	230426	297008	169627	211799	250298
February	154362	211788	267147	147341	186075	229620
March	176349	212408		161643	185183	
April	183216	189408		156394	154996	
May	152618	240450		123951	182420	
June	204361	258221		170870	200306	

Graph 04: Twelve months exports of readymade garment (knitted)



Graph 05: Twelve months exports of readymade garment (not knitted)

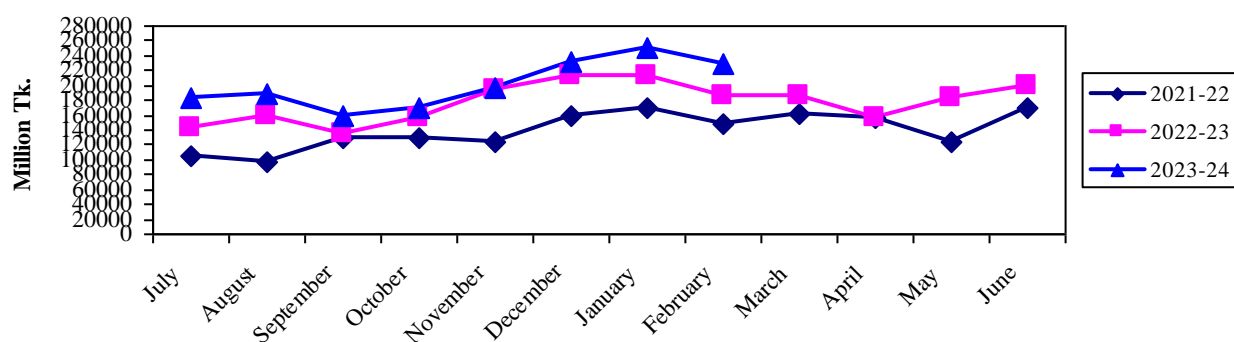


Table 6: Twelve months export of raw hides, skins & leather, 2021-22 to 2023-24.

(In million taka)

Month	Raw hides, skins & leather		
	2021-22	2022-23	2023-24
July	940	1218	898
August	727	994	1397
September	1065	1096	1502
October	899	1010	1182
November	1203	1040	1567
December	1155	914	1340
January	1324	1311	1263
February	1329	856	1175
March	1337	786	
April	1358	1024	
May	740	1200	
June	1066	947	

Graph 06: Twelve months exports of raw hides,skins & leather

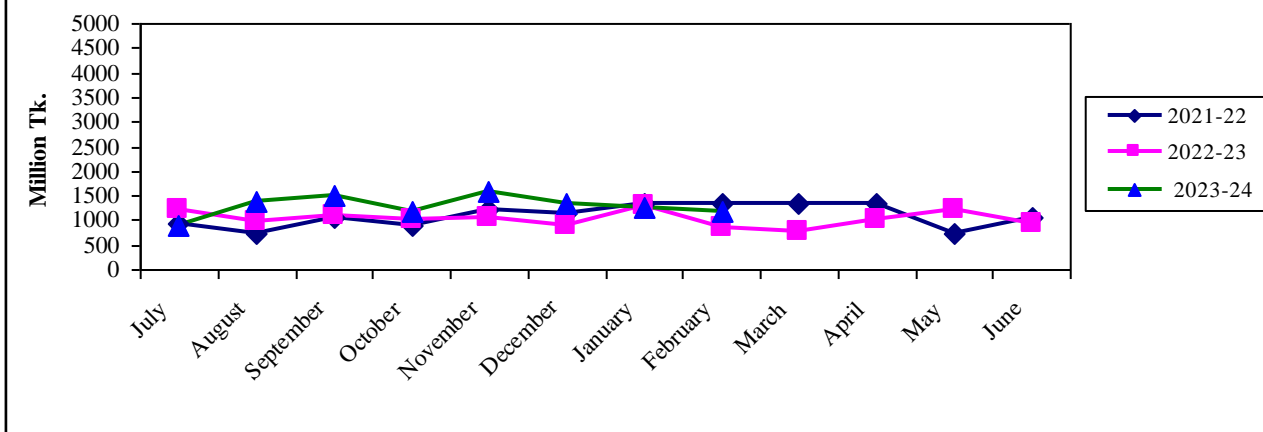


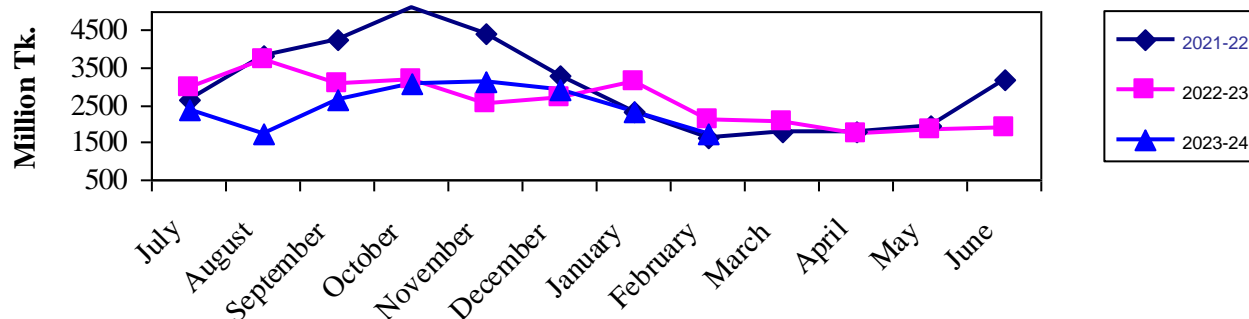
Table 7: Twelve months export of shrimps and prawn, 2021-22 to 2023-24.

(In million taka)

Month	Shrimps and prawn		
	2021-22	2022-23	2023-24
July	2625	2948	2358
August	3817	3737	1756
September	4240	3079	2632
October	5128	3165	3088
November	4414	2557	3151
December	3307	2697	2920
January	2345	3128	2315
February	1620	2096	1754
March	1767	2047	
April	1783	1756	
May	1967	1830	
June	3173	1894	



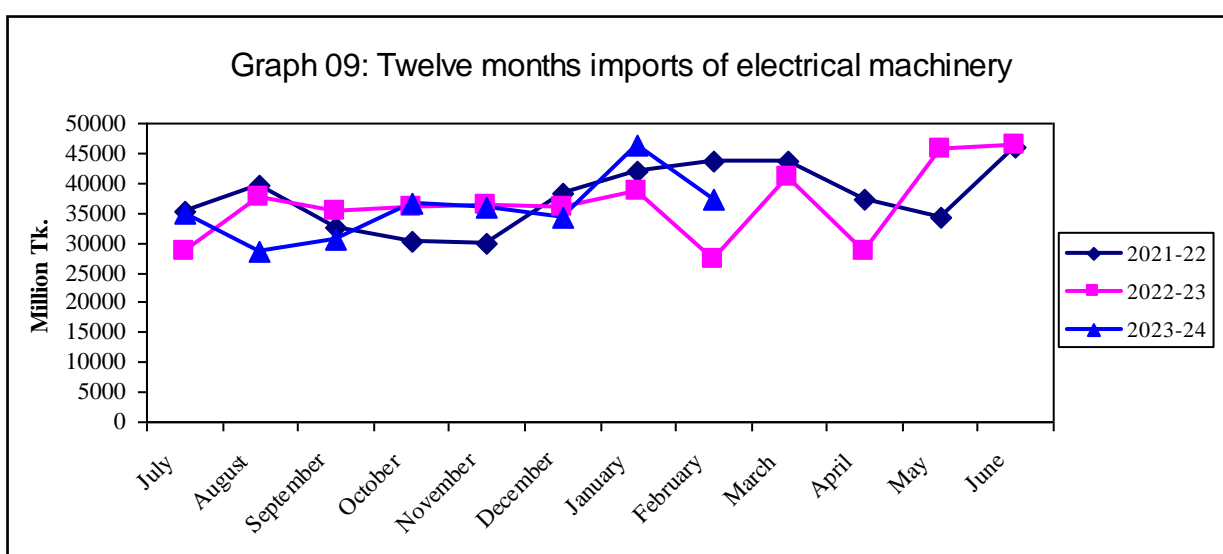
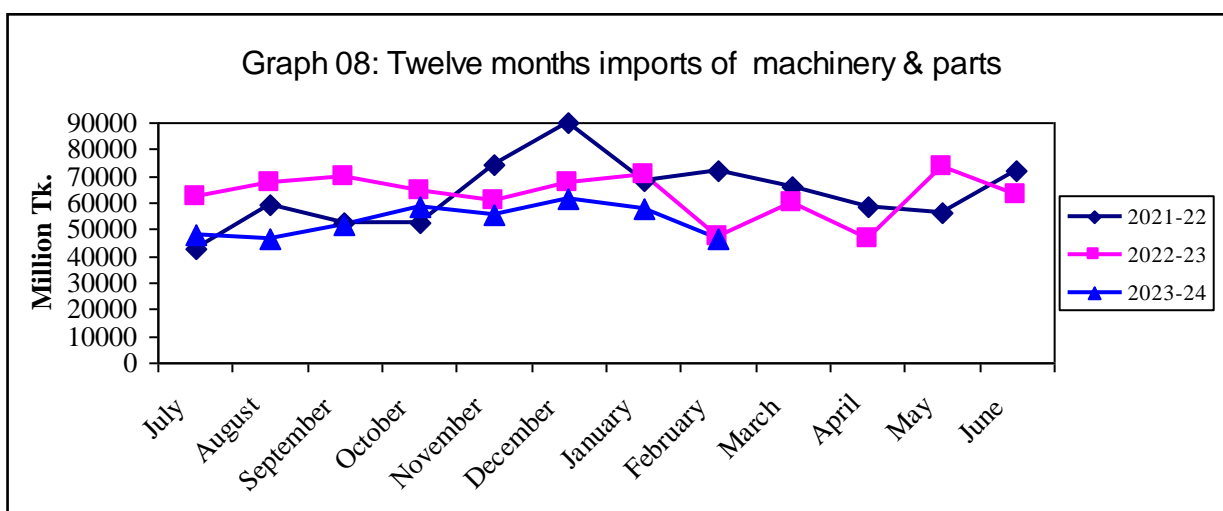
Graph 07: Twelve months exports of shrimps & prawn



**Table 8: Twelve months import of machinery & parts and electrical machinery during 2021-22 to 2023-24.**

(In million taka)

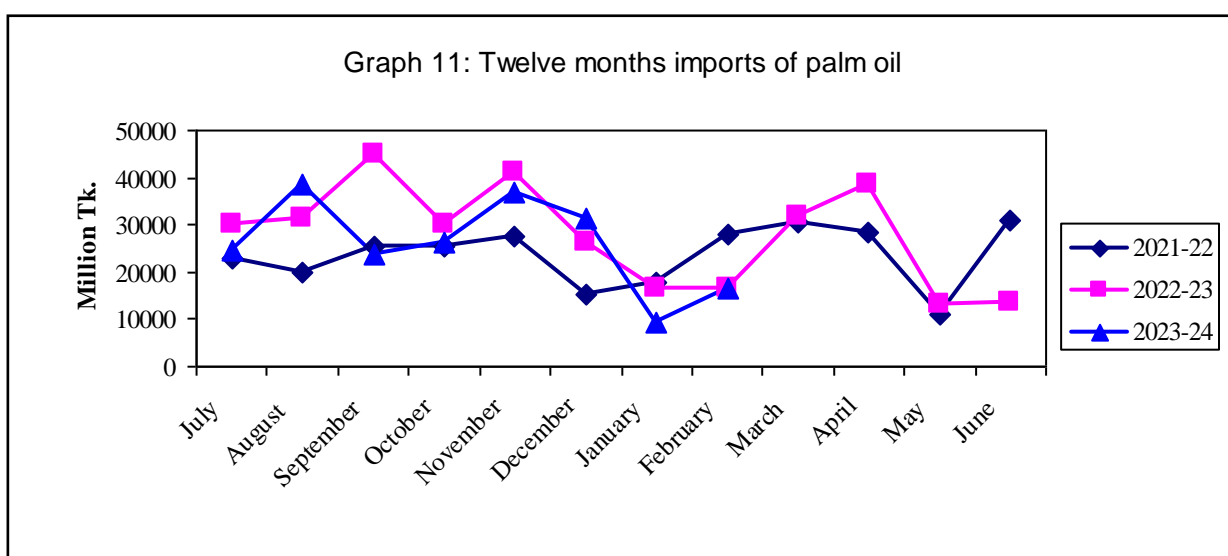
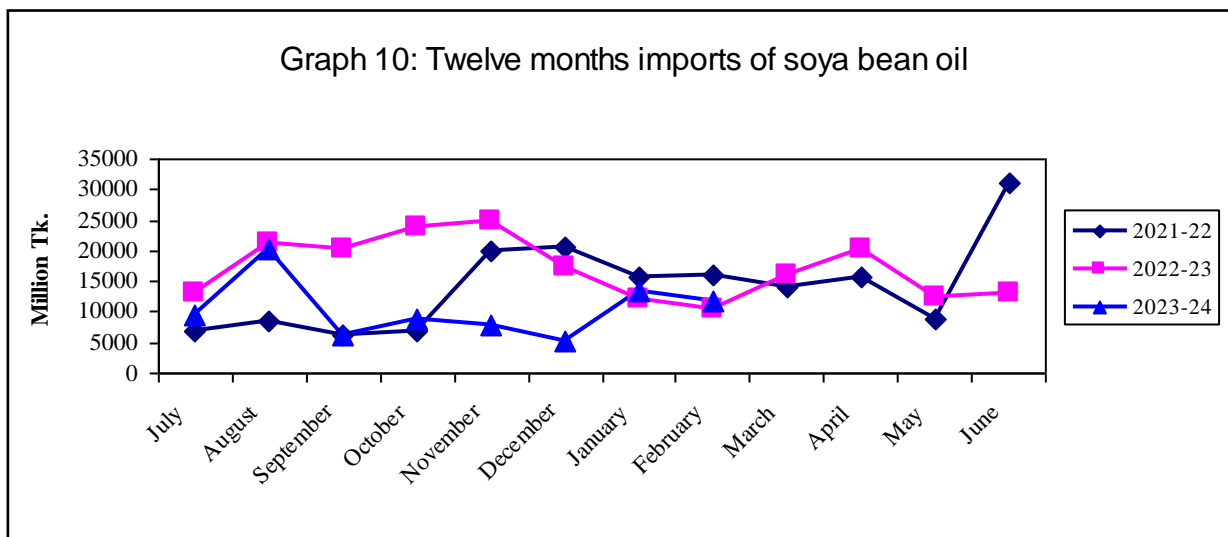
Month	Machinery & Parts			Electrical Machinery		
	2021-22	2022-23	2023-24	2021-22	2022-23	2023-24
July	42971	62085	48075	35148	28567	34755
August	59146	67253	46573	39574	37476	28543
September	52533	70033	51544	32696	35178	30545
October	52725	64260	58223	30345	35888	36631
November	74109	60976	55201	29805	36384	35831
December	89824	67751	61409	38252	36034	34311
January	68322	70392	57526	41964	38622	46187
February	72283	46971	46749	43746	27069	37253
March	66053	59744		43604	40863	
April	58831	46573		37305	28543	
May	55948	73399		34348	45632	
June	72321	62715		46054	46313	



**Table 9: Twelve months imports of Soya bean and Palm oil during 2021-22 to 2023-24.**

(In million taka)

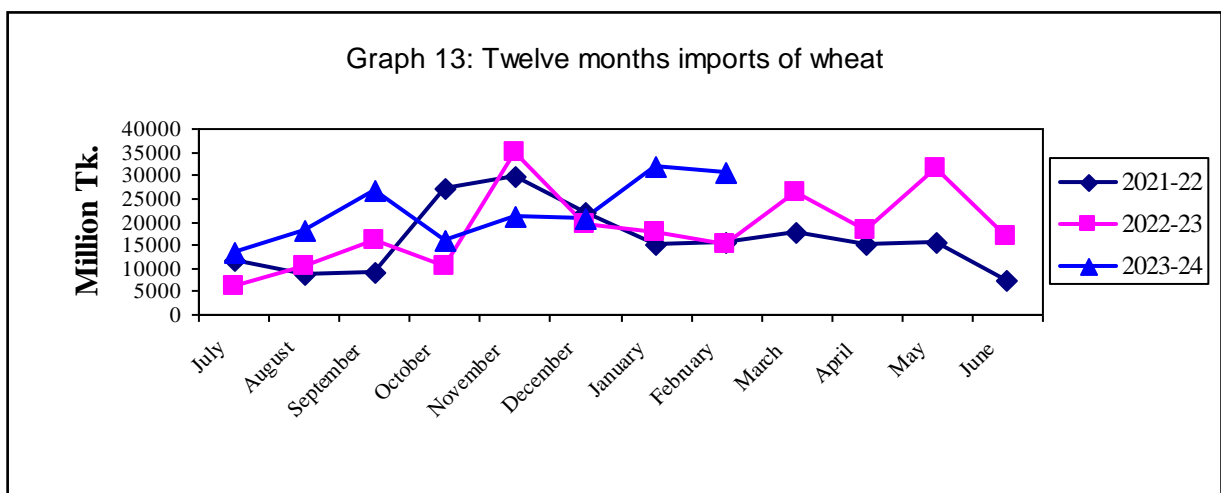
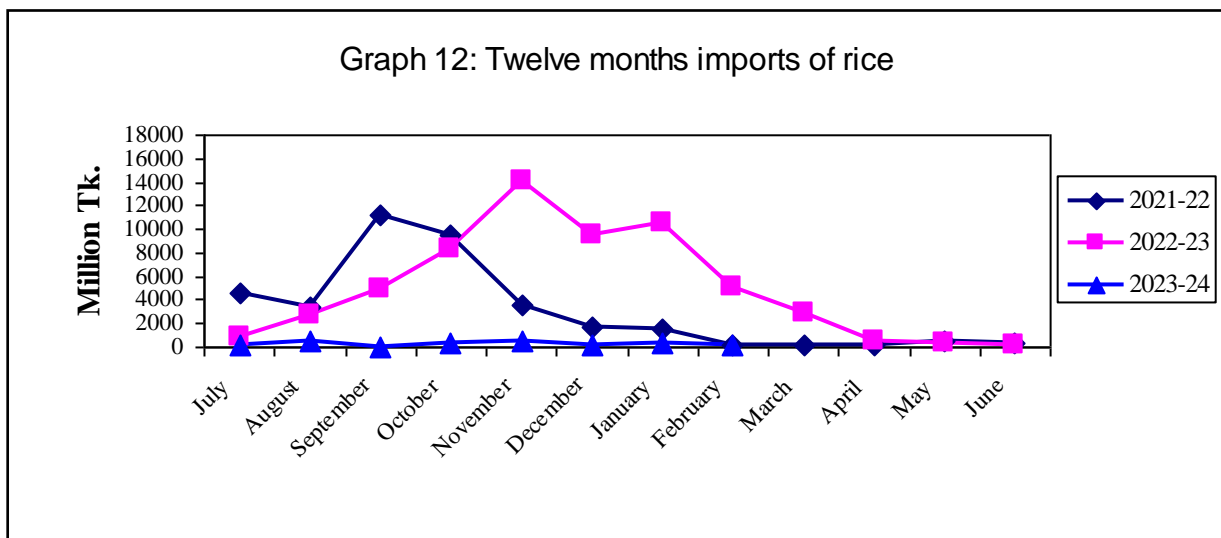
Month	Soya bean			Palm Oil		
	2021-22	2022-23	2023-24	2021-22	2022-23	2023-24
July	6817	13155	9598	22906	29916	24408
August	8508	21130	20391	19976	31181	38564
September	6163	20195	6162	25569	44736	23528
October	6916	23984	8991	25463	29906	26104
November	19916	24813	7883	27639	41100	36697
December	20470	17412	5212	15457	26283	31195
January	15694	11957	13393	17617	16384	9249
February	15904	10399	11815	28118	16556	16602
March	13913	15955		30519	31670	
April	15559	20391		28512	38564	
May	8988	12393		11045	12929	
June	31008	13166		30855	13411	



**Table 10: Twelve months import of rice and wheat during 2021-22 to 2023-24.**

(In million taka)

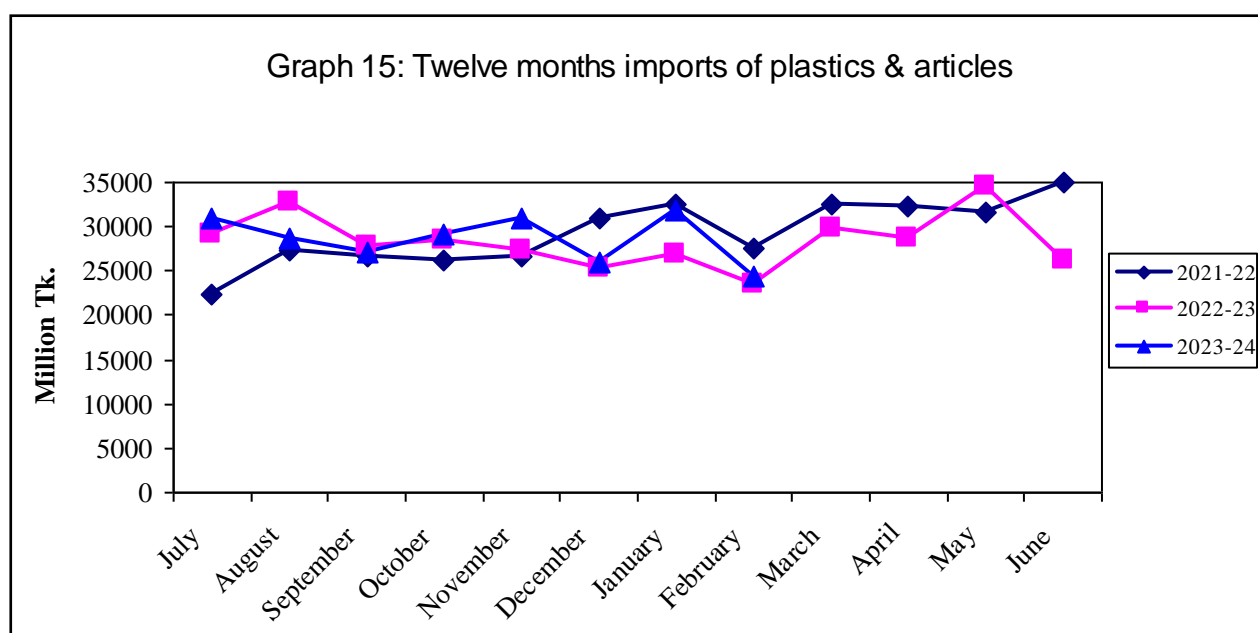
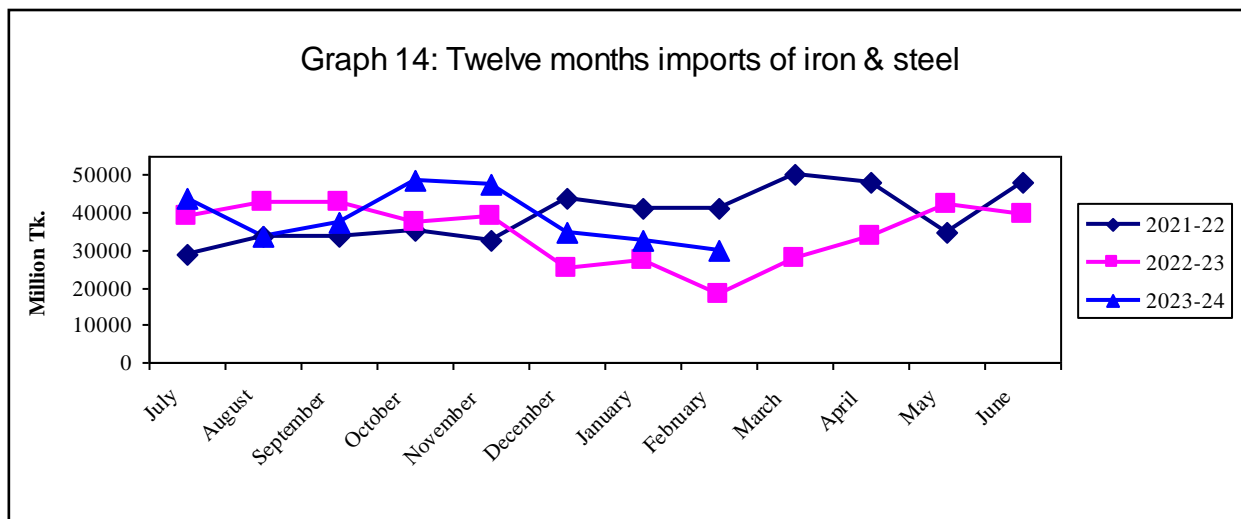
Month	Rice			Wheat		
	2021-22	2022-23	2023-24	2021-22	2022-23	2023-24
July	4557	889	106	11652	5854	13299
August	3480	2676	464	8751	10317	18157
September	11158	4998	78	9038	15761	26508
October	9534	8265	290	27143	10201	15801
November	3504	14133	553	29583	34724	21200
December	1692	9471	87	21899	19539	20660
January	1456	10473	384	15231	17473	31732
February	171	5136	95	15312	14906	30646
March	189	2894		17621	26287	
April	166	464		14917	18157	
May	479	380		15395	31266	
June	316	218		7232	16614	



**Table 11: Twelve months import of iron & steel and plastics & articles during 2021-22 to 2023-24.**

(In million taka)

Month	Iron & Steel			Plastics & articles		
	2021-22	2022-23	2023-24	2021-22	2022-23	2023-24
July	29056	39219	43919	22268	29175	30910
August	33867	42921	33796	27350	32745	28784
September	33906	42896	37303	26599	27763	27053
October	35093	37553	48812	26248	28504	29044
November	32710	39050	47609	26707	27341	30904
December	43555	24849	34624	30981	25398	26080
January	41357	27143	32540	32490	26960	31906
February	41186	18402	29780	27498	23554	24311
March	50454	27760		32414	29701	
April	47981	33796		32224	28784	
May	34827	42434		31558	34536	
June	48233	39577		34975	26140	



**Table 12. Point to point percent change in external trade (goods)**

(In million taka)

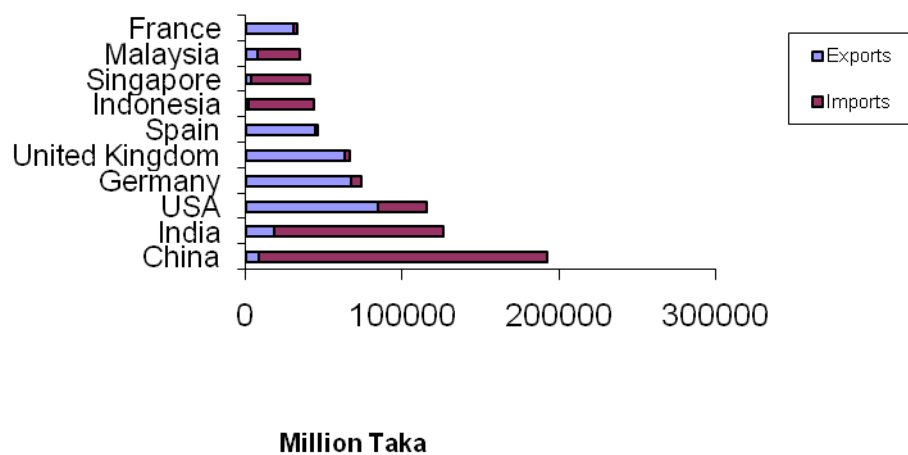
Items	December- February			February		
	2022-23	2023-24	Change in percent	2022-23	2023-24	Chage in percent
1. Export(Commodities)	1560551	1834161	17.53	503953	591017	17.28
2. Import (Commodities)	2135966	2250011	5.34	642570	733793	14.20
3.Trade balance(1-2)	-575415	-415850	12.19	-138617	-142776	3.08

**Table13. Top trading partners – total trade (goods), February -2024**

(In million taka)

Country	Exports	Imports	Total	Rank	Percent of Total Trade
China	8220	183641	191861	1	14.48
India	18308	107868	126176	2	9.52
USA	83938	31344	115282	3	8.70
Germany	67205	6813	74018	4	5.59
United Kingdom	62664	3880	66544	5	5.02
Spain	44404	1602	46006	6	3.47
Indonesia	1227	41778	43005	7	3.25
Singapore	3260	37331	40591	8	3.06
Malaysia	7164	27114	34278	9	2.59
France	30131	2663	32794	10	2.48

**Graph 16: Top trading partners – total trade (goods), February'24**



**Table 14. Top trading partners – Exports (goods), February-2024**

(In million taka)

<b>Country</b>	<b>Export</b>	<b>Rank</b>	<b>Percent of Total Export</b>
United States	83938	1	14.20
Germany	67205	2	11.37
United Kingdom	62664	3	10.60
Spain	44404	4	7.51
France	30131	5	5.10
Poland	25322	6	4.28
Netherlands	24507	7	4.15
Italy	23489	8	3.97
Japan	19141	9	3.24
India	18308	10	3.10

**Table 15. Top trading partners – Imports (goods), February -2024**

(In million taka)

<b>Country</b>	<b>Import</b>	<b>Rank</b>	<b>Percent of Total Import</b>
China	183641	1	25.03
India	107868	2	14.70
Indonesia	41778	3	5.69
Singapore	37331	4	5.09
United States	31344	5	4.27
Malaysia	27114	6	3.70
Hongkong	26608	7	3.63
Brazil	25686	8	3.50
United States Russian FED	21400	9	2.92
Untd Arab Em	20830	10	2.84

**Table 16. Monthly merchandise export (2-digit HS code)**

(In million taka)

HS Code	Commodities	2023-24		% change from previous month
		Jan'24	Feb'24	
1	Live animals	0.03	0.01	-66.67
2	Meat and edible meat offal	0.45	-	-
3	Fishes, crustacean and other aquatic	3636.73	2835.76	-22.02
4	Dairy produces edible product of animal origin.	41.57	19.14	-53.96
5	Products of animal origin	190.08	139.00	-26.87
6	Live tree Plant bulb root etc.	-	-	-
7	Edible vegetables, roots as tubers	541.42	584.30	7.92
8	Edible fruits and nuts citrus fruits	19.83	267.36	1248.26
9	Coffee, tea, mate and spices	738.96	626.58	-15.21
10	Cereals	8.37	15.41	84.11
11	Product of milling industry : malt etc.	36.05	40.05	11.10
12	Oil seeds and oleaginous fruits	268.77	116.91	-56.50
13	Lac, gum resin vegetable sap/ extract	61.64	122.42	98.60
14	Vegetable plaiting materials	171.98	150.13	-12.70
15	Animal or vegetable fats and oils	800.70	504.84	-36.95
16	Preparations of meat or fish etc.	28.23	-	-
17	Sugar and sugar confectionery	211.08	230.92	9.40
18	Cocoa and cocoa preparations	40.40	27.53	-31.86
19	Preparations of cereals, flour, starch etc.	2518.87	2124.50	-15.66
20	Preparations of vegetable fruits, nuts, etc.	960.90	925.31	-3.70
21	Misc. edible preparations	39.33	22.04	-43.96
22	Beverages, spirits and vinegar	305.21	340.75	11.64
23	Residues & waste from the food industry	16.34	3.65	-77.66
24	Tobacco mfg tobacco substitutes	317.21	945.86	198.18
25	Salt, sulphr etc. & plastering metals stone cement	170.07	206.55	21.45
26	Ores, slag and ash	328.26	331.34	0.94
27	Mineral, fuels/oils etc.	5.13	26.80	422.42
28	Inorganic chem. comp of specious metals etc.	548.17	478.23	-12.76
29	Organic chemicals	82.46	71.59	-13.18
30	Pharmaceutical products	1862.90	1849.62	-0.71
31	Fertilizers	-	-	-
32	Tanning/dyeing ext; dye pigments etc.	9.40	16.16	71.91
33	Essential oils, perfumery/toilet pre.	8.12	11.99	47.66



**Table 16. Monthly merchandise export (2-digit HS code)**

(in million taka)

HS Code	Commodities	2023-24		% change from previous month
		Jan'24	Feb'24	
34	Soap, organic Surface-active agents etc.	90.99	44.11	-51.52
35	Albuminoidal substitute starches, glues etc.	26.13	12.36	-52.70
36	Explosive pyrotechnic products	-	-	-
37	Photographic/cinematographic goods	-	-	-
38	Miscellaneous chem. products	373.69	304.80	-18.44
39	Plastics and articles thereof	2737.68	2299.85	-15.99
40	Rubber and articles thereof	392.83	437.70	11.42
41	Raw hides & skins, leather	1263.06	1174.82	-6.99
42	Articles of Leather/Animal Gut	3744.29	3674.74	-1.86
43	Fur skins & artificial fur. Mfg.	-	-	-
44	Wood & art. of wood; wood charcoal	233.48	247.57	6.03
45	Cork and articles of cork	-	-	-
46	Manufactures of straw etc.	310.90	348.06	11.95
47	Pulp/ wood/fibrous cellulose materials etc.	-	-	-
48	Paper & paper board; art. P. pulp etc.	2891.23	2358.63	-18.42
49	Printed books, news papers, pictures etc.	120.18	104.61	-12.96
50	Silk	2.08	2.14	2.88
51	Wool, fine/coarse animal hair etc.	2.06	0.01	-99.51
52	Cotton	5557.85	4773.08	-14.12
53	Other vegetable, Textile fibres, paper/yarn etc	7360.76	6983.89	-5.12
54	Man-made filaments	1616.14	1512.77	-6.40
55	Man-made staple fibres	1078.97	1152.71	6.83
56	Wadding felts nonwovens, special yarn etc.	610.92	732.86	19.96
57	Carpet other text. floor coverings	274.04	257.46	-6.05
58	Special woven fabrics, tufted tex.fabrics etc.	1169.09	1099.05	-5.99
59	Impregnated, coated, textile fabrics etc.	725.92	611.67	-15.74
60	Knitted or crocheted fabrics	1648.99	1272.12	-22.85
61	Article of appl. clothing accesso. knit / crocht.	297007.63	267147.06	-10.05
62	Article of appl. clothing accesso. knit/	250298.04	229620.18	-8.26
63	Other made up textile articles etc.	10183.67	10344.06	1.57
64	Footwear, gaiter & like etc.	12077.99	9510.22	-21.26
65	Headgear and parts thereof	3518.67	2590.16	-26.39

**Table 16. Monthly merchandise export (2-digit HS code)**

(in million taka)

HS Code	Commodities	2023-24		% change from previous month
		Jan'24	Feb'24	
66	Umbrellas, sun umbrellas, walk sticks etc.	-	-	-
67	Prepared feathers & down/articles etc.	1331.39	1095.65	-17.71
68	Art of stone, plastic, cement etc.	36.12	55.28	53.05
69	Ceramic products	256.71	266.71	3.90
70	Glass and glassware	110.65	47.92	-56.69
71	Natural/culture pearls precious stones etc.	10.18	6.91	-32.12
72	Iron or steel	519.40	383.52	-26.16
73	Articles of iron or steel	593.27	819.64	38.16
74	Copper and articles thereof	391.06	539.15	37.87
75	Nickel and articles thereof	8.03	-	-
76	Aluminum and article thereof	281.81	292.13	3.66
78	Lead and articles thereof	-	-	-
79	Zinc and articles thereof	-	12.67	-
80	Tin and articles thereof	-	-	-
81	Other base metals, cermets etc.	9.19	18.8	104.57
82	Tools, cutlery Spon base Metl Part	78.90	377.28	378.17
83	Miscellaneous art of base metal.	102.93	111.87	8.69
84	Nuclear reactors, boilers etc.	1898.57	7540.54	297.17
85	Electrical mach. & equipment, parts etc.	1961.53	1957.04	-0.23
86	Rail/tramway locomotives etc.	85.51	3118.23	3546.63
87	Vehicles, other than rail/tram way's & parts etc.	548.10	1933.45	252.75
88	Aircraft, space craft and parts.	3.76	1611.27	42752.93
89	Ships, boats & floating structures	7721.20	1666.41	-78.42
90	Optical,photo,cinematgph.Medical inst.etc.	1104.69	3127.34	183.10
91	Clocks & watches & parts	25.32	14.78	-41.63
92	Musical /instruments and parts etc.	-	-	-
93	Arms, & ammunition and parts & accessories	-	0.11	-
94	Furniture, bedding, mattresses etc.	900.41	1028.99	14.28
95	Toys, games & sports requisites & parts	735.40	745.93	1.43
96	Miscellaneous mfg. articles	2652.74	2592.79	-2.26
97	Works/ art, collectors & antiques	0.31	0.77	148.39
98	Goods Commodities NEC	1.49	0.76	-48.99
<b>Total</b>		<b>640655.6</b>	<b>591017.38</b>	<b>-7.75</b>

**Table 17. Monthly export of major commodities (4 digits)**

(In million taka)

HS Code	Commodities	2023-24		% change from previous month
		Jan'24	Feb'24	
303	Fish frozen	272.65	298.31	9.41
304	Fish fillet, other fish meal	0.44	0.11	-75.00
305	Fish dried	176.36	107.75	-38.90
306	Shrimps & prawns frozen	2315.04	1753.68	-24.25
307	Molluscs	87.84	84.14	-4.21
506	Bone and horn- cores	-	-	-
709	Vegetable fresh, chilled other	17.43	25.42	45.84
902	Tea	47.88	46.73	-2.40
1006	Rice	8.37	7.50	-10.39
2401	Un-manufactured tobacco	272.02	824.27	203.02
2710	Petro oil/oil bitum minrl, nec	4.78	26.53	455.02
3003-004	Pharmaceutical product	1862.89	1836.21	-1.43
3901-926	Plastic & articles thereof	8247	2299.81	-72.11
4102	Raw hides & skin of sheep's or lambs	-	-	-
4103	Raw hides and skin other	5.67	-	-
4104	Leather Bovine/Equin W/Out hair	944.03	770.08	-18.43
4105	Tanned or crust skins of sheep or lambs	-	0.93	-
4106	Tanned or crust hides and skins or other animals	30.31	52.04	71.69
4107	Leather hole hides and skins or crusting	265.48	347.61	30.94
4113	Leather further prepared after tanning or crusting including parchment-dressed leather of other animals	13.53	4.17	-69.18
4202	Trunks, suit-case, vanity-cases, brief cases, and other	3534.19	3402.92	-3.71
4602	Basket work, wicker work, and other articles	302.60	342.49	13.18
5303	Jute and other textile bast fibres, raw or retted	1528.79	1488.35	-2.65
5307	Jute yarn	4785.41	4713.60	-1.50
5310	Woven fabrics and jutes or of other textile bast fibres	998.54	761.01	-23.79
5607	Jute twine, cordage, ropes and cables	284.12	305.98	7.69
6101-117	Readymade garments men's women's and girls knitted and crocheted	255748.56	267147.1	4.46
6201-217	Readymade garments men's women's and girls not knitted and crocheted	250298.04	229620	9.41
6305	Sacks and bags, of a kind used for the packing of goods	1489.54	1527.70	-75.00
6401-6406	Foot ware with outer soles and uppers of rubber or of plastics and other	12077.99	9510.22	-38.90
6505	Heads and other headgear, knitted or crocheted	3404.18	2538.90	-24.25
<b>Total</b>		<b>549023.68</b>	<b>529843.56</b>	<b>-3.49</b>

**Table 18. Monthly merchandise import (2-digit HS code)**

(In million taka)

H S Code	Commodities	2023-24		% change From previous month
		Jan'24	Feb'24	
1	Live animals	776.64	556.45	-28.35
2	Meat and edible meat offal	864.26	12.32	-98.57
3	Fishes, crustacean and other aquatic	1005.31	1432.90	42.53
4	Dairy produces edible product of animal origin	5144.05	2790.84	-45.75
5	Products of animal origin	1517.51	804.48	-46.99
6	Live tree and other plants etc.	15.71	12.41	-21.01
7	Edible vegetables, roots as tubers	16704.85	8804.29	-47.30
8	Edible fruits and nuts citrus fruits	7305.14	12702.41	73.88
9	Coffee, tea, mate and spices	5035.24	5426.78	7.78
10	Cereals	32881.83	31135.67	-5.31
11	Product of milling industry: malt etc.	264.9	148.95	-43.77
12	Oil seeds and oleaginous fruits	14301.9	21890.56	53.06
13	Lac, gums, resins , vegetable saps & extra	194.55	169.98	-12.63
14	Vegetable plaiting materials	23.83	27.86	16.91
15	Animal or vegetable fats and oils	23428.28	29066.06	24.06
16	Preparations of meat or fish etc.	30.93	28.46	-7.99
17	Sugar and sugar confectionery	17806.65	18298.26	2.76
18	Cocoa and cocoa preparation	130.34	84.10	-35.48
19	Preparations of cereals, flour, starch etc.	1699.95	1189.78	-30.01
20	Preparations of vegetable, fruits, nuts, etc.	166.9	193.57	15.98
21	Misc. edible preparations	2018.69	1238.80	-38.63
22	Beverages, spirits and vinegar	137.46	135.25	-1.61
23	Residues & waste from the food industries	10896.24	10751.56	-1.33
24	Tobacco mfg tobacco substitutes	670.63	72.79	-89.15
25	Salt, sulphur, etc. and plastering metals stone cement	25239.24	25312.61	0.29
26	Ores, slag and ash	3955.14	3399.77	-14.04
27	Mineral, fuels/oils etc.	87402.27	85695.45	-1.95
28	Inorganic. Chem.: compounds of specious meta etc.	6339.57	5062.57	-20.14
29	Organic Chemicals	14823.33	12227.17	-17.51
30	Pharmaceutical products	3979.45	3227.93	-18.89
31	Fertilizers	52733.06	25416.57	-51.80
32	Tanning/dyeing ext; dye pigments etc.	8298.7	7083.34	-14.65
33	Essential Oils, perfumery/toilet pre.	1355.69	1074.85	-20.72
34	Soap, organic surface-active agents etc.	2435.47	1935.04	-20.55

**Table 18. Monthly merchandise import (2-digit HS code)**

(In million taka)

H S Code	Commodities	2023-24		% change from previous month
		Jan'24	Feb'24	
35	Albuminoidal substitute starches, glue	1701.65	1401.16	-17.66
36	Explosives pyrotechnic products etc.	133.9	43.97	-67.16
37	Photographic/cinematographic goods	416.59	344.26	-17.36
38	Miscellaneous chem. products	11807.24	8719.54	-26.15
39	Plastics and articles thereof	31906.16	24311.08	-23.80
40	Rubber and articles thereof	4620.58	3210.81	-30.51
41	Raw hides & skins, leather	2082.35	1525.25	-26.75
42	Articles of Leather/Animal gut	340.48	375.78	10.37
43	Fur skins & artificial fur. Mfg.	6.72	12.80	90.48
44	Wood & art. of wood; wood charcoal	1053.1	1121.34	6.48
45	Cork and articles of cork	1.89	1.87	-1.06
46	Manufactures of straw etc.	2.13	2.07	-2.82
47	Pulp/ wood/fibrous cellulosic materials etc.	3647.68	1167.27	-68.00
48	Paper & paper board; art. Paper pulps etc.	10846.91	10364.12	-4.45
49	Printed Book, News paper & picture	931.98	659.73	-29.21
50	Silk	17.48	11.96	-31.58
51	Wool, fine/coarse animal hair etc.	648.67	1082.60	66.90
52	Cotton	83226.52	88583.15	6.44
53	Other vegetable, textile fibres, paper/yarn etc	9457.75	5546.52	-41.35
54	Man-made filaments	25656.69	24937.27	-2.80
55	Man-made staple fibres	23064.79	25898.32	12.29
56	Wadding felts non-wovens, special yarn etc	1959.2	2255.14	15.11
57	Carpet other text. floor coverings	49.35	81.38	64.90
58	Special woven fabrics, tufted textile fabrics etc.	6042.01	7321.11	21.17
59	Impregnated, coated, textile fabrics etc.	5948.21	6708.56	12.78
60	Knitted or crocheted fabrics	19397.42	24011.71	23.79
61	Article of apparel. clothing accessor. knit /croch	479.19	325.28	-32.12
62	Article of apparel. clothing accessor. n-knit/ croch.	2305.9	2402.68	4.20
63	Other made up textile articles etc.	430.71	559.95	30.01
64	Footwear, gaiter & like etc.	2729.56	3022.27	10.72
65	Headgear and parts thereof	92.42	94.09	1.81
66	Umbrellas, sun umbrellas, walk sticks etc.	95.16	72.64	-23.67

**Table18. Monthly merchandise import (2-digit HS code)**

(In million taka)

HS Code	Commodities	2023-24		% change from previous month
		Jan'24	Feb'24	
67	Prepared feather & down articles	721.63	629.93	-12.71
68	Art of stone, plastic, cement etc.	1796.69	1069.88	-40.45
69	Ceramic products	1030.25	839.91	-18.48
70	Glass and glassware	1492.32	1161.94	-22.14
71	Natural/culture pearls & precious stones	186.03	185.50	-0.28
72	Iron or steel	32539.79	29780.27	-8.48
73	Articles of iron or steel	6812.27	5155.22	-24.32
74	Copper and articles thereof	2054.19	2995.33	45.82
75	Nickel and articles thereof	40.55	21.41	-47.20
76	Aluminum and article thereof	6037.49	5415.25	-10.31
78	Lead and articles thereof	424.82	669.15	57.51
79	Zinc and articles thereof	1355.09	1006.11	-25.75
80	Tin and articles thereof	160.27	70.43	-56.06
81	Other base metals, cermets etc.	26.61	48.80	83.39
82	Tools, implements, cutlery etc.	680.64	557.85	-18.04
83	Miscellaneous art of base metal.	2230.8	2174.25	-2.53
84	Nuclear reactors, boilers etc.	57525.63	46749.08	-18.73
85	Electrical mach. & equipment, parts etc.	46187.44	37253.18	-19.34
86	Rail/tramway locomotives etc.	3049.55	556.74	-81.74
87	Vehicles, other than rail/tram way's & parts etc.	10524.71	7280.66	-30.82
88	Aircraft, space craft and parts.	1264.29	1846.34	46.04
89	Ships, boats & floating structures	3341.81	10862.15	225.04
90	Optical, Photograph, Cinematograph, Medical Inst.	7924.26	5089.14	-35.78
91	Clocks & watches & parts.	185.53	96.57	-47.95
92	Musical /instruments and parts etc.	7.07	5.67	-19.80
93	Arms, & ammunition and parts & accessories	1740.37	65.68	-96.23
94	Furniture, bedding, mattresses etc.	1367.6	1023.75	-25.14
95	Toys, games & sports requisites & parts etc.	446.92	347.58	-22.23
96	Miscellaneous mfg. articles	6992.92	7247.16	3.64
97	Works/ art, collectors & antiques	0.73	2.86	291.78
98	Goods commodities nec	0.2	0.06	-70.00
<b>Total</b>		<b>798832.57</b>	<b>733793.36</b>	<b>-8.14</b>

**Table 19. Monthly import of major commodities (4 digits)**

(In million taka)

H S Code	Commodities	2023-24		% change From previous month
		Jan'24	Feb'24	
401	Milk & cream	2.59	10.17	292.66
703	Onion & Garlic	2759.05	2290.59	-16.98
713	Dried leguminous vegetable	13905.84	6390.82	-54.04
804	Dates	920.16	5662.14	515.34
806	Grapes	940.95	2069.47	119.93
808	Apples	1191.27	1071.05	-10.09
904	Pepper	1601.68	1834.11	14.51
1001	wheat	31732.01	30645.73	-3.42
1006	Rice	384.27	95.13	-75.24
1108	Starches	135.99	138.12	1.57
1201-1212	Oil seeds	14301.91	21890.52	53.06
1507	Soya bean oil	13392.82	11814.51	-11.78
1511	Palm Oil	9248.55	16601.79	79.51
1701	Sugar	16230.18	17526.01	7.98
2401	Un-manufactured tobacco	595.74	48.09	-91.93
2523	Cement	13184.61	15389.77	16.73
2710	Petroleum product	46453.84	47524.39	2.30
2801-2851	In organic Chemicals	6339.04	4087.98	-35.51
2901-2942	Organic Chemicals	14823.32	12227.19	-17.51
3101-3105	Fertilizers	52733.05	26101.42	-50.50
3201-3215	Tanning & dyeing	8298.70	4115.34	-50.41
3801-3825	Chemical product	11797.06	8604.22	-27.06
3901-3926	Plastic & articles thereof	31906.14	24311.1	-23.80
4801-4823	Paper & paper board	10846.90	10364.13	-4.45
5201-5203	Raw cotton	34416.75	33700.24	-2.08
5205-5207	Cotton yarn	19443.28	17028.53	-12.42
5208-5212	Cotton fabric	28717.22	37815.96	31.68
5402-5406	Synthetic yarn	11131.78	10184.92	-8.51
5407-5408	Synthetic fabric	13317.52	13684.95	2.76
5504-5507	Staple fibre	4084.29	3933.66	-3.69
5509-5511	Yarn of staple fibre	4316.52	6516.86	50.97
5512-5516	Fabric of staple fibre	10246	10947.72	6.85
7201-7229	Iron or steel I	32539.80	29780.46	-8.48
7301-7326	Article of iron & steel	6812.24	5155.19	-24.32
7601-7616	Aluminum & article thereof	6037.41	5415.25	-10.31
8402-8485	Machinery & parts	57253.58	46375.64	-19.00
8501-8548	Electrical goods	46186.49	37253.18	-19.34
8607-8609	Rail, tramway, locomotive	211.93	115.52	-45.49
8701-8716	Vehicle	10524	7280.66	-30.82
8902,8903,8908	Ships, boat, floating structure	3341.74	5737.18	71.68
9001-9033	Optical, Photo, Cinema etc.	7925.28	5089.12	-35.79
<b>Total</b>		<b>585929.59</b>	<b>546828.83</b>	<b>-6.67</b>

**Table 20. Re-export Value, February - 2024 by 2 digit HS Code.**

(In million taka)

HS CODE	HS DESCRIPTIONS	
	Total: Re-Exports	9478.54
29	Organic Chemicals	4.98
30	Pharmaceutical products	0.16
32	Tanning/dyeing ext; dye pigments etc.	2.05
39	Plastics and articles thereof	37.90
40	Rubber and articles thereof	7.17
42	Articles of Leather/Animal gut	3.73
44	Wood & art. of wood; wood charcoal	23.10
48	Paper & paper board; art. Paper pulps etc.	2.10
49	Printed Book, News paper & picture	0.01
52	Cotton	12.13
54	Man-made filaments	0.70
57	Carpet other text. floor coverings	3.82
58	Special woven fabrics, tufted textile fabrics etc.	1.34
59	Impregnated, coated, textile fabrics etc.	2.43
60	Knitted or crocheted fabrics	3.37
61	Article of apparel. clothing accessor. knit /crocht	70.22
62	Articl of apparel.clothing accessor.n-knit/ crocht.	52.58
63	Other made up textile articles etc.	11.70
64	Footwear, gaiter & like etc.	0.08
65	Headgear and parts thereof	2.22
68	Art of stone, plastic, cement etc.	0.57
72	Iron or steel	38.59
73	Articles of iron or steel	642.21
76	Aluminum and article thereof	4.52
82	Tools, implements, cutlery etc.	359.12
83	Miscellaneous art of base metal.	18.31
84	Nuclear reactors, boilers etc.	3689.11
85	Electrical mach. & equipment, parts etc.	475.64
86	Rail/tramway locomotives etc.	10.41
87	Vehicles, other than rail/tram way's & parts etc.	42.97
88	Aircraft, space craft and parts.	0.11
89	Ships, boats & floating structures	1659.94
90	Optical, Photograph, Cinematograph, Medical Inst.	2263.97
94	Furniture, bedding, mattresses etc.	30.83
96	Miscellaneous mfg. articles	0.46



**Table 21. Re- import Value, , February - 2024 by 2 digit HS Code.**

(In million taka)

HS CODE	HS DESCRIPTIONS	
	Total : Re- Imports	32.02
03	Fishes, crustacean and other aquatic	14.66
61	Article of apparel. clothing accessor. knit /crocht	10.30
62	Articl of apparel.clothing accessor.n-knit/ crocht.	1.74
84	Nuclear reactors, boilers etc.	5.27
87	Vehicles, other than rail/tram way's & parts etc.	0.04

**Table 22. Temporary Export Value, January - 2024 by 2 digit HS Code.**

(In million taka)

HS CODE	HS DESCRIPTIONS	
	Total : Temporary- Exports	8052.06
40	Rubber and articles thereof	0.41
73	Articles of iron or steel	4.90
82	Tools, implements, cutlery etc.	0.54
84	Nuclear reactors, boilers etc.	3208.38
85	Electrical mach. & equipment, parts etc.	36.46
86	Rail/tramway locomotives etc.	3092.76
87	Vehicles, other than rail/tram way's & parts etc.	1194.43
88	Aircraft, space craft and parts.	508.00
90	Optical, Photograph, Cinematograph, Medical Inst.	6.18

**Table 23 . Temporary Import Value, February - 2024 by 2 digit HS Code.**

(In million taka)

HS CODE	HS DESCRIPTIONS	
	Total : Temporary- Imports	5656.87
08	Edible fruits and nuts citrus fruits	10.55
39	Plastics and articles thereof	0.02
40	Rubber and articles thereof	0.62
42	Articles of Leather/Animal gut	0.01
48	Paper & paper board; art. Paper pulps etc.	0.00
49	Printed Book, News paper & picture	0.08
63	Other made up textile articles etc.	0.01
73	Articles of iron or steel	46.92
76	Aluminum and article thereof	0.97
82	Tools, implements, cutlery etc.	8.74
84	Nuclear reactors, boilers etc.	597.23
85	Electrical mach. & equipment, parts etc.	36.78
87	Vehicles, other than rail/tram way's & parts etc.	35.70
89	Ships, boats & floating structures	4861.23
90	Optical, Photograph, Cinematograph,Medical Inst.	57.93
91	Clocks & watches & parts.	0.01
94	Furniture, bedding, mattresses etc.	0.05
96	Miscellaneous mfg. articles	0.01