

Executive Summary

Bangladesh Bureau of Statistics (BBS) compiles and publishes Foreign Trade Statistics (FTS) on a regular basis. This publication presents monthly trend of Bangladesh foreign trade statistics on top trading partners, essential import commodities and last twelve months scenario of major export and import goods specially for May 2023.

Merchandise trade data of this publication are provided by National Board of Revenue (NBR) while data on services from Bangladesh Bank. Data presented in this publication are provisional and subject to revision. All these provisional data will be subsequently reviewed and revised. Revised data are being presented in next issues.

In May, 2023 total export and import of goods and services is recorded at increased by Tk. 578.02 and increased by Tk.1025.76 billion respectively resulting in a trade deficit at goods and services of Tk. 447.74 billion. The growth of export and import in May, 2023 increased by 22.57 and increased by 36.15 percent respectively comparing to April 2023 and it is increased by 41.62 and increased by 21.41 percent respectively comparing to May, 2022.

For the three months ending in May, 2023 the average of export of goods and services was Tk 531.81 billion, while the moving average of import of goods and services was Tk.880.30 billion resulting in an average trade deficit of Tk.348.49 billion. For the three months ending in April, 2023 the average trade deficit was Tk. 254.27 reflecting average exports of Tk.527.35 billion and average imports of Tk. 8781.72 billion.

Indicators of this publication are expected to provide a good idea about the trend of export and import of the country over the previous months of a year. This monthly release would be a useful document for planners, policy makers, researchers, development partners/agencies, academicians and other stakeholders.

Table 1: Export, import and trade deficits

(In billion taka)

Period	Export			Import			Trade balance		
	Total	Goods	Services	Total	Goods	Services	Total	Goods	Services
2020-21	4253.85	3279.88	773.97	7566.77	6633.04	933.73	-3309.92	-3153.16	-159.69
2021-22	5427.42	4571.35	856.12	10235.39	8939.51	1295.88	-4717.92	-4367.79	-439.76
2022-23									
Jun-22	558.56	461.65	96.91	971.04	830.02	141.02	-412.48	-368	-44.11
Jul-22	451.13	382.19	68.94	791.76	696.02	95.74	-340.63	-313.83	-26.28
Aug-22	516.62	442.23	74.39	936.86	825.14	111.72	-420.24	-382.91	-37.33
Sep-22	448.44	375.67	72.77	931.40	822.06	109.34	-482.96	-446.39	-36.57
Oct-22	501.24	432.83	68.41	881.18	783.59	97.59	-379.95	-359.77	-30.18
Nov-22	566.66	499.30	67.36	1008.20	904.32	103.88	-441.54	-405.02	-36.52
Dec-22	628.40	539.79	88.61	838.68	731.26	107.42	-210.28	-191.47	-18.81
Jan-23	588.61	516.81	71.80	863.93	762.13	101.80	-275.32	-245.32	30.00
Feb-23	564.95	503.95	61.00	730.04	642.57	87.47	-165.09	-138.62	-26
Mar-23	545.82	478.09	67.73	861.75	757.62	104.13	-315.93	-279.53	-36.40
Apr-23	471.59	412.47	59.12	753.38	657.07	96.31	-281.79	-244.60	-37.19
May-23	578.02	512.81	65.21	1025.76	903.49	122.27	-447.74	-390.68	-57.06

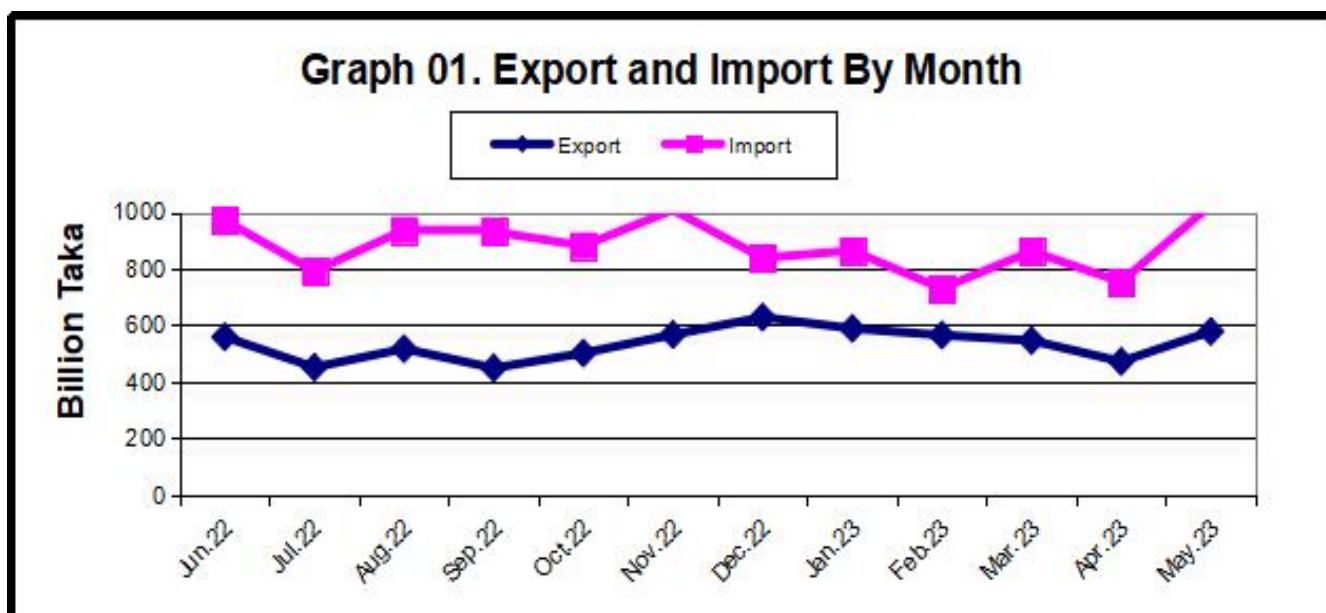


Table 2: Export, import and trade deficits

(In million US \$)

Period	Export			Import			Trade balance		
	Total	Goods	Service	Total	Goods	Service	Total	Goods	Service
2020-21	41801	41026	775	79132	78197	935	-37331	-37171	-182
2021-22	52792	52048	854	103096	101816	1295	-50214	-49787	-441
2021-22									
Jun-22	5036	4940	96	9023	8882	141	-3987	-3942	-45
Jul-22	4105	4036	69	7446	7350	96	-3341	-3314	-27
Aug-22	4729	4655	74	8798	8686	112	-4069	-4031	-38
Sep-22	3986	3913	73	8672	8563	109	-4686	-4650	-36
Oct-22	4548	4480	68	8208	8110	98	-3660	-3630	-30
Nov-22	5162	5095	67	9332	9228	104	-4170	-4129	-37
Dec-22	5541	5452	89	7493	7386	107	-1952	-1934	-18
Jan-23	5240	5168	72	7723	7621	102	-2483	-2453	-30
Feb-23	5051	4990	61	6449	6362	87	-1398	-1372	-26
Mar-23	4802	4734	68	7605	7501	104	-2803	-2767	-36
Apr-23	4064	4005	59	6475	6379	96	-2411	-2374	-37
May-23	4972	4907	65	8768	8646	122	-3796	-3739	-57

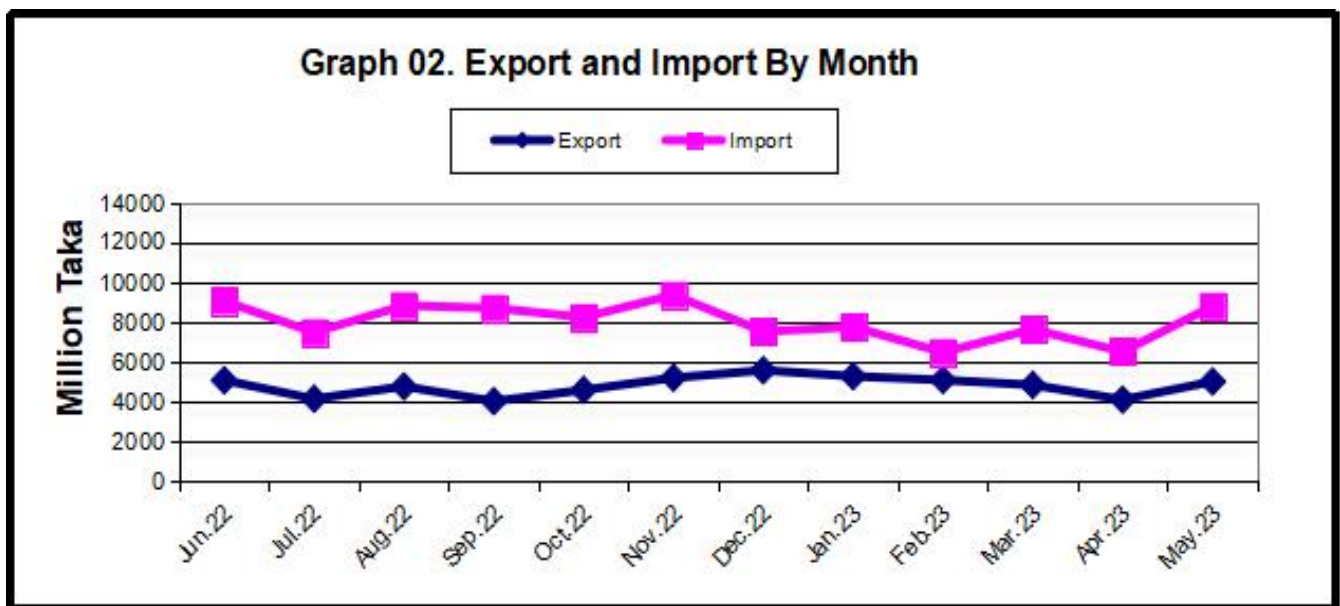


Table 3. Percent change from the previous month (goods)

(In million taka)

Items	2022-23		
	Apr'23	May'23	Percent change from the previous month
1. Export (Commodities)	412470	512808	24.33
1. Ready made Garments	344404	422870	22.78
2. Shrimps and prawn	1756	1830	4.21
3. Vegetable textiles fiber/ yarn	6719	7682	14.33
4. Made-up textiles articles	9101	9315	2.35
5. Raw hides, skins & leathers	1024	1200	17.19
6. Raw jute	1872	1964	4.91
7. Footwear Special woven fabrics	8312	11098	33.52
8. Fertilizer	-	-	-
9. Hats and other head gear	3072	4003	30.31
10. Special woven fabrics	732	824	12.57
11. Others	35478	52022	46.63
2. Import (Commodities)	657067	903485	37.50
1. Machinery & parts	46573	73399	57.60
2. Petroleum product and oil	48664	172310	254.08
3. Electric Machinery	28543	45632	59.87
4. Soya bean and Palm oil	58955	25322	-57.05
5. Raw cotton	25788	36033	39.73
6. Textile fabrics	225	95	-57.78
7. Iron and steel	33796	42434	25.56
8. Plastics and articles	28784	34536	19.98
9. Wheat	18157	31266	72.20
10. Fertilizer	18346	18202	-0.78
11. Others	349236	424256	21.48
3. Trade balance (1-2)	-244597	-390677	59.72

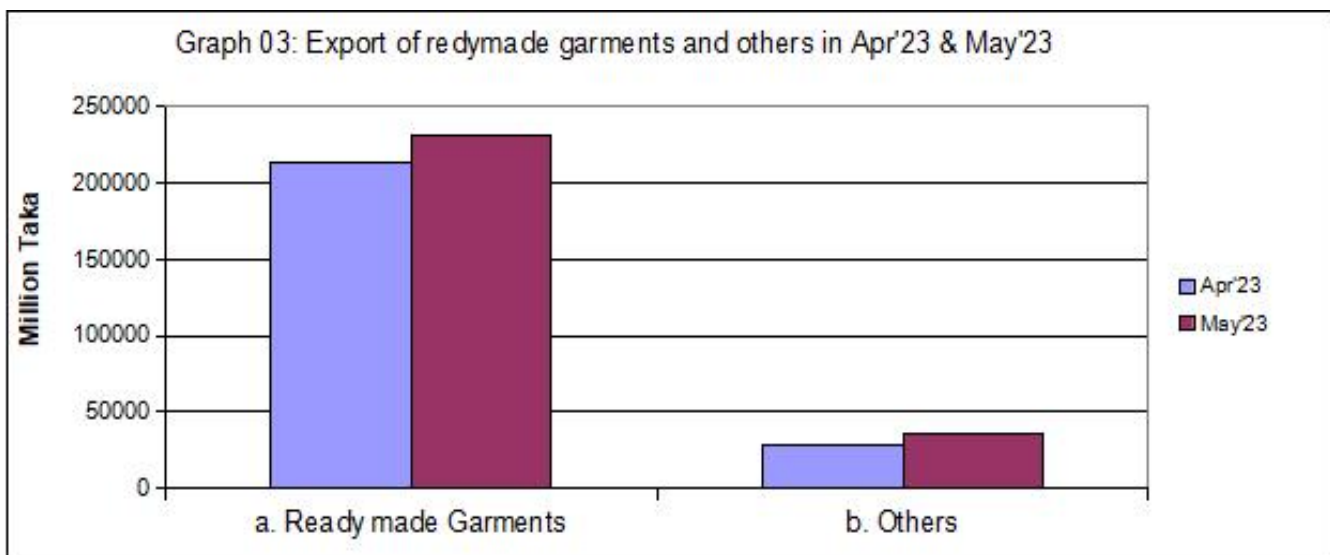


Table 4. Import of Essential Commodities Quantity

(In M. Ton)

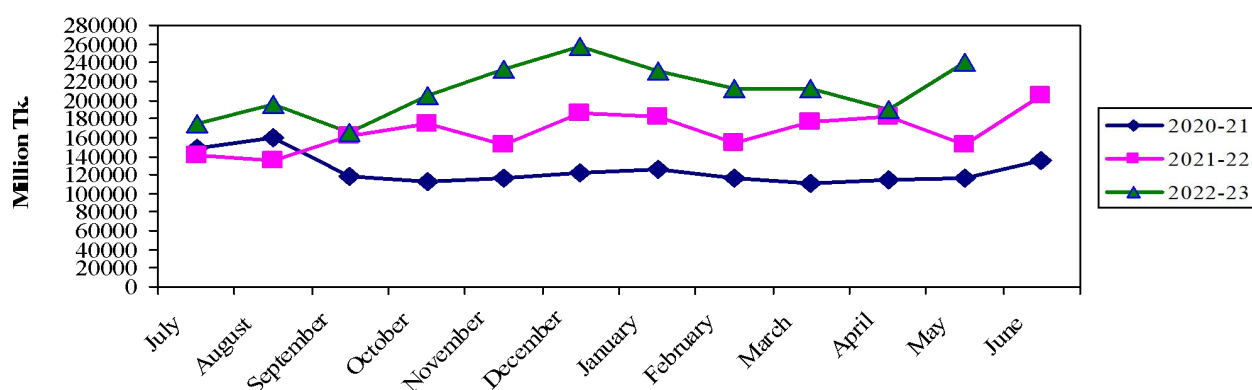
Items	2022-23			
	Apr'23	May'23	Percent change from the previous month	Cumulative (May -23)
Import (Commodities)				
1. Raw sugar	284763	437054	53.48	3147007
2. Palm oil	361036	122252	-66.14	2570687
3. Soya bean oil	148888	93653	-37.10	1174662
4. Milk & Cream	7599	12405	63.25	105209
5. Ginger	-	-	-	-
6. Chillies	-	-	-	-
7. Wheat	263482	326218	23.81	2240845
8. Rice	2173	2151	-1.01	1063916
9. Lentil & other	121283	45613	-62.39	561112
10. Onion	68664	38638	-43.73	1023612
11. Garlic	10883	24857	128.40	92554
12. Tea	13	98	653.85	382
13. Oil seed	128600	243083	89.02	2003092
14. Gram/Anchor	314	1047	233.44	-
15. Turmeric	5332	5995	12.43	31279

Table 5: Twelve months export of readymade garments during 2020-21 to 2022-23.

(In million taka)

Month	Ready made Garments (Knitted)			Ready made Garments (Not Knitted)		
	2020-21	2021-22	2022-23	2020-21	2021-22	2022-23
July	148425	140660	175290	126746	104214	142679
August	159561	135975	195288	136445	97954	158932
September	118835	162372	165780	92672	128967	135386
October	113478	175012	204138	83588	129679	156311
November	117069	152286	232621	96243	125082	194969
December	121823	186536	256545	108965	160055	211968
January	126302	182230	230426	119882	169627	211799
February	115745	154362	211788	108514	147341	186075
March	111493	176349	212408	96898	161643	185183
April	113787	183216	189408	99656	156394	154996
May	115959	152618	240450	101061	123951	182420
June	135506	204361		110002	170870	

Graph 04: Twelve months exports of readymade garment (knitted)



Graph 05: Twelve months exports of readymade garment (not knitted)

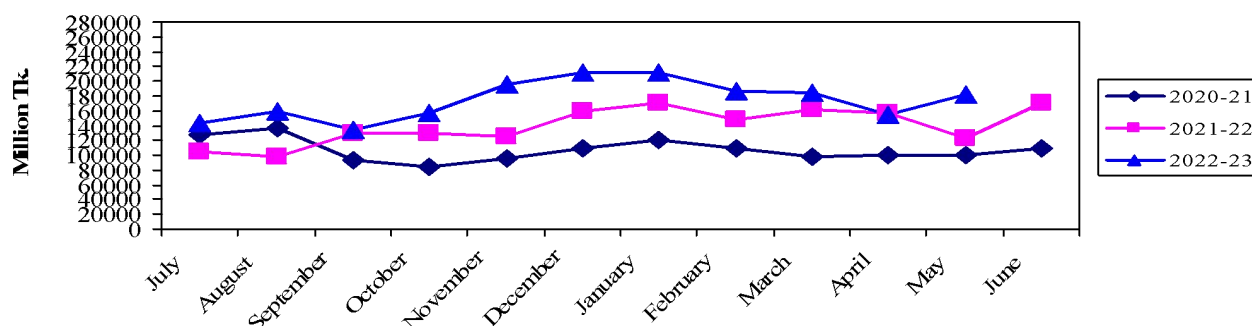


Table 6: Twelve months export of raw hides, skins & leather, 2020-21 to 2022-23.

(In million taka)

Month	Raw hides, skins & leather		
	2020-21	2021-22	2022-23
July	775	940	1218
August	4486	727	994
September	949	1065	1096
October	819	899	1010
November	1244	1203	1040
December	948	1155	914
January	752	1324	1311
February	848	1329	856
March	854	1337	786
April	1093	1358	1024
May	1081	740	1200
June	874	1066	

Graph 06: Twelve months exports of raw hides,skins & leather

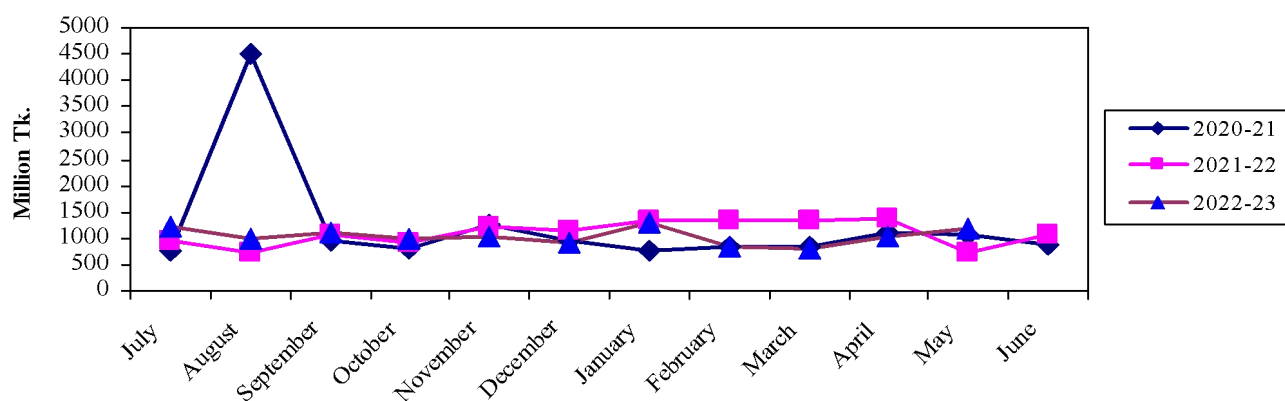


Table 7: Twelve months export of shrimps and prawn, 2020-21 to 2022-23.

(In million taka)

Month	Shrimps and prawn		
	2020-21	2021-22	2022-23
July	2977	2625	2948
August	2490	3817	3737
September	3313	4240	3079
October	3507	5128	3165
November	2492	4414	2557
December	2867	3307	2697
January	1350	2345	3128
February	1306	1620	2096
March	1570	1767	2047
April	1663	1783	1756
May	2433	1967	1830
June	3405	3173	

Graph 07: Twelve months exports of shrimps & prawn

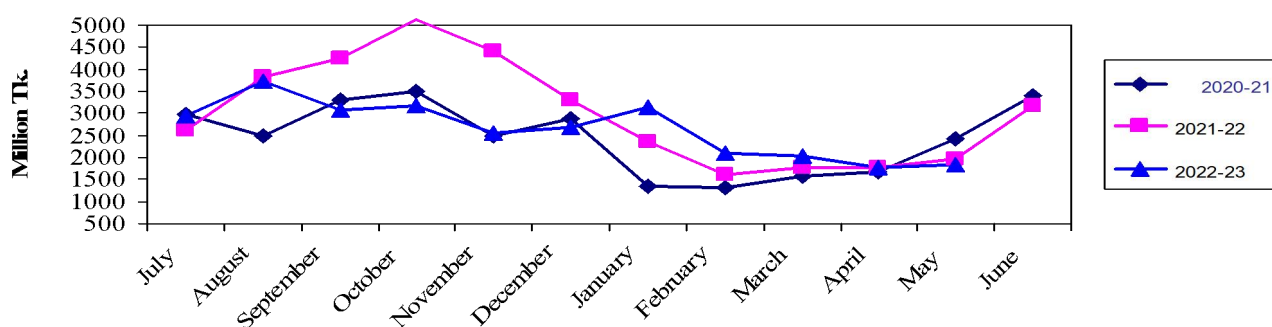
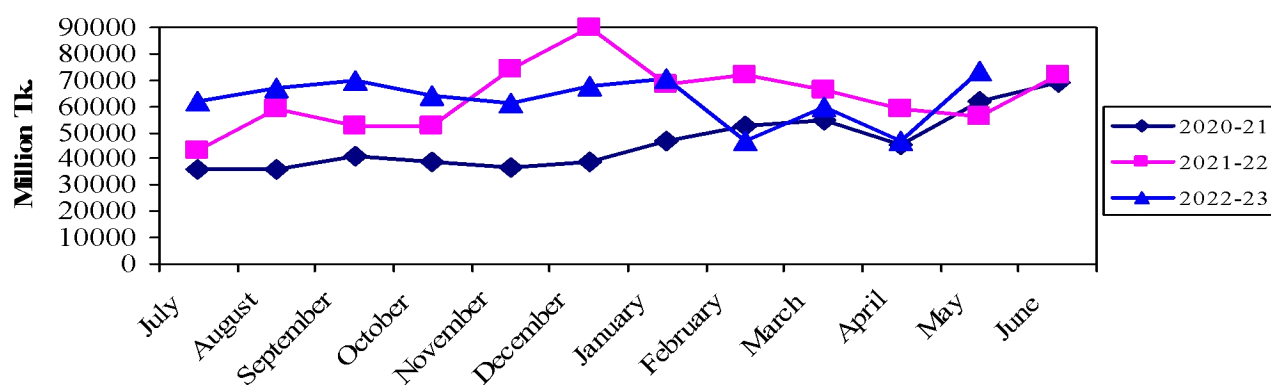


Table 8: Twelve months import of machinery & parts and electrical machinery during 2020-21 to 2022-23.

(In million taka)

Month	Machinery & Parts			Electrical Machinery		
	2020-21	2021-22	2022-23	2020-21	2021-22	2022-23
July	35766	42971	62085	29204	35148	28567
August	36056	59146	67253	30551	39574	37476
September	41367	52533	70033	30102	32696	35178
October	39088	52725	64260	23546	30345	35888
November	36819	74109	60976	28234	29805	36384
December	38843	89824	67751	27469	38252	36034
January	46465	68322	70392	28765	41964	38622
February	52868	72283	46971	24293	43746	27069
March	54713	66053	59744	30982	43604	40863
April	45012	58831	46573	33196	37305	28543
May	62248	55948	73399	34347	34348	45632
June	69079	72321		41375	46054	

Graph 08: Twelve months imports of machinery & parts



Graph 09: Twelve months imports of electrical machinery

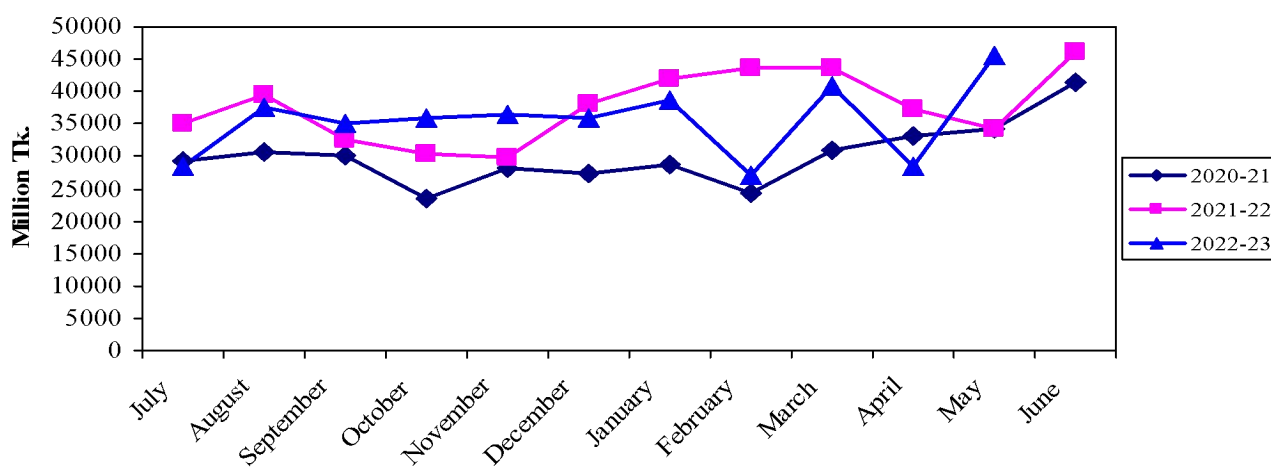
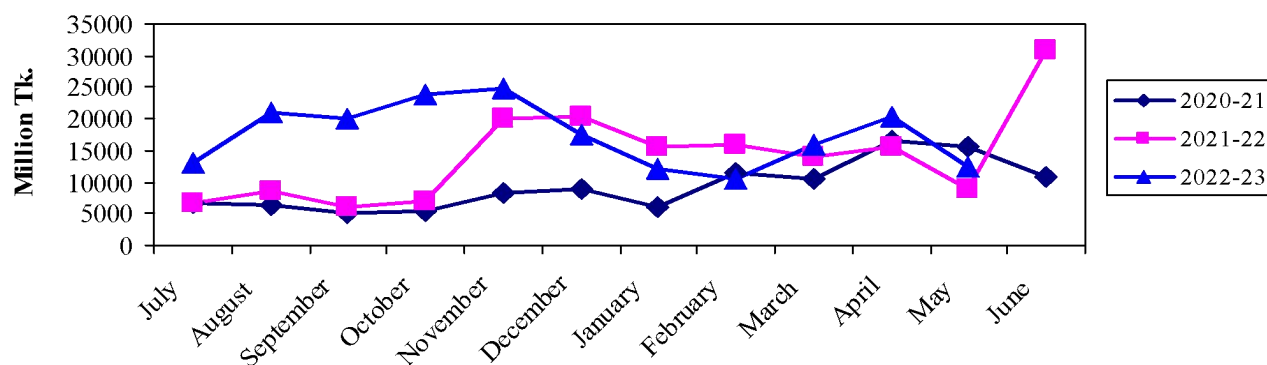


Table 9: Twelve months imports of Soya bean and Palm oil during 2020-21 to 2022-23.

(In million taka)

Month	Soya bean			Palm Oil		
	2020-21	2021-22	2022-23	2020-21	2021-22	2022-23
July	6625	6817	13155	10189	22906	29916
August	6501	8508	21130	5651	19976	31181
September	5121	6163	20195	13704	25569	44736
October	5345	6916	23984	12679	25463	29906
November	8221	19916	24813	15877	27639	41100
December	8923	20470	17412	16497	15457	26283
January	5926	15694	11957	6724	17617	16384
February	11495	15904	10399	25579	28118	16556
March	10558	13913	15955	21473	30519	31670
April	16611	15559	20391	26329	28512	38564
May	15675	8988	12393	19142	11045	12929
June	10818	31008		12979	30855	

Graph 10: Twelve months imports of soya bean oil



Graph 11: Twelve months imports of palm oil

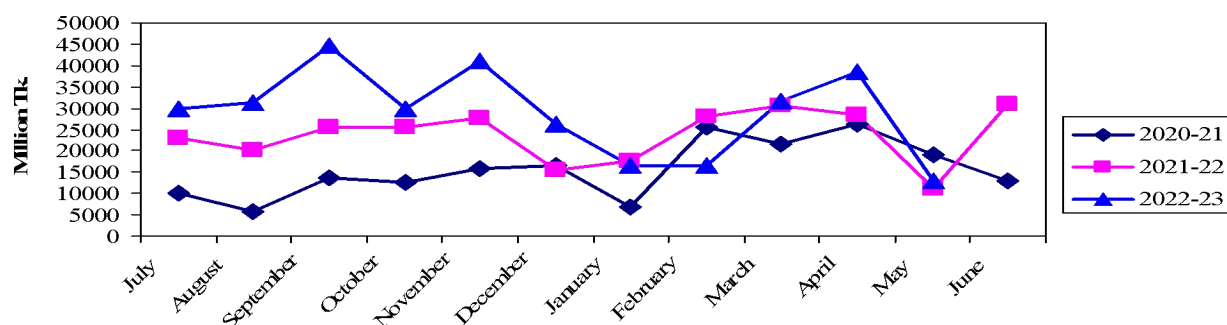


Table 10: Twelve months import of rice and wheat during 2020-21 to 2022-23.

(In million taka)

Month	Rice			Wheat		
	2020-21	2021-22	2022-23	2020-21	2021-22	2022-23
July	64	4557	889	6347	11652	5854
August	157	3480	2676	12095	8751	10317
September	96	11158	4998	20864	9038	15761
October	340	9534	8265	13081	27143	10201
November	195	3504	14133	7260	29583	34724
December	20114	1692	9471	19655	21899	19539
January	2847	1456	10473	8365	15231	17473
February	9179	171	5136	15907	15312	14906
March	13820	189	2894	17327	17621	26287
April	15083	166	464	18827	14917	18157
May	7719	479	380	11914	15395	31266
June	5937	316		11288	7232	

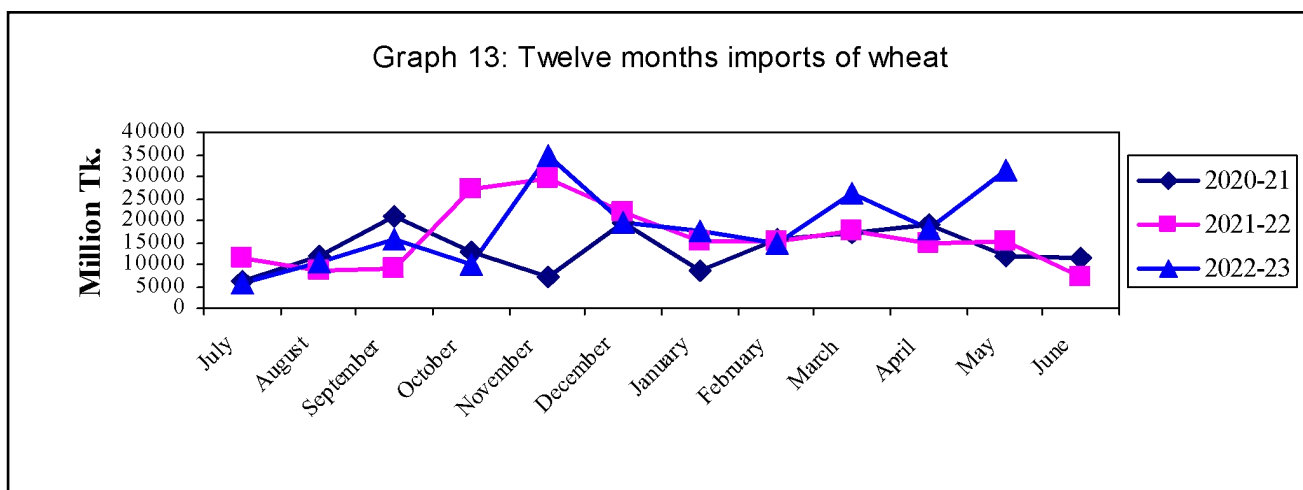
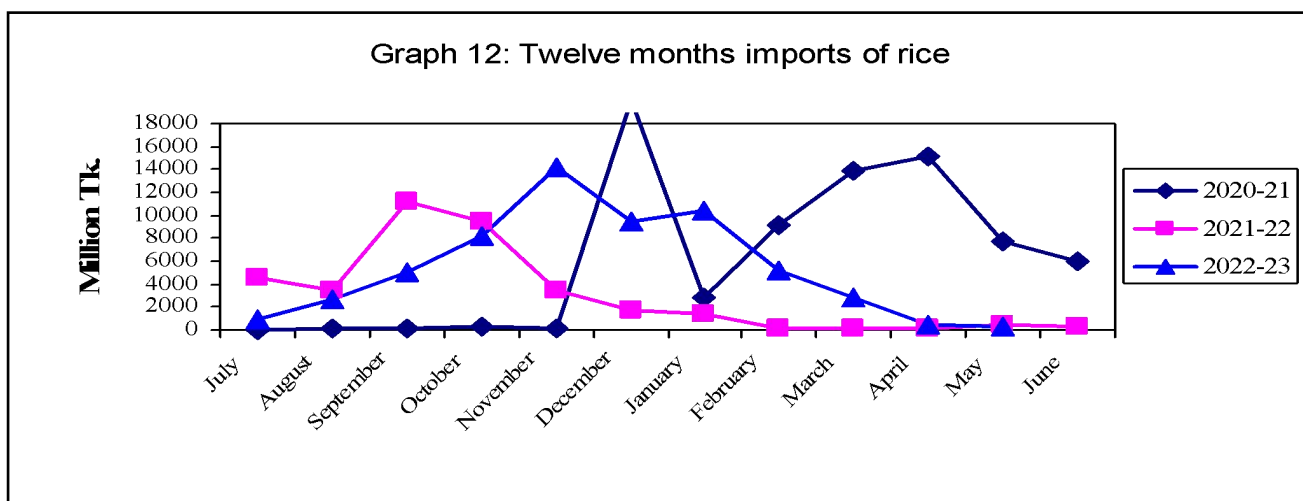
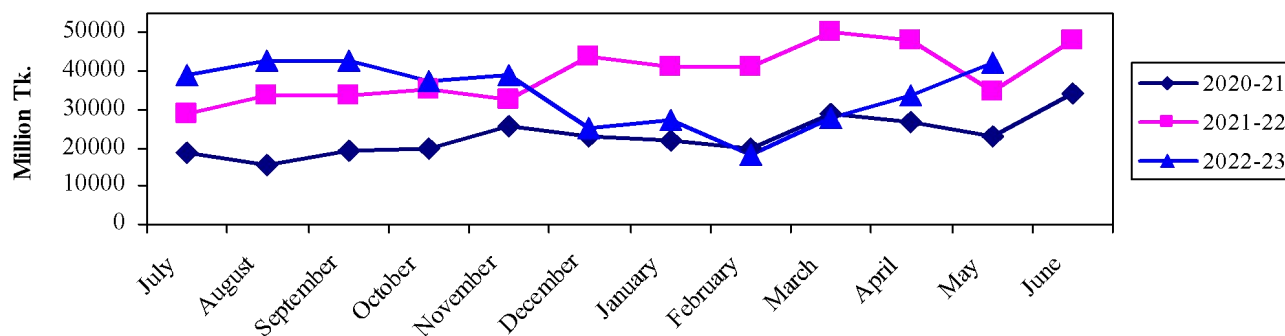


Table 11: Twelve months import of iron & steel and plastics & articles during 2020-21 to 2022-23.

(In million taka)

Month	Iron & Steel			Plastics & articles		
	2020-21	2021-22	2022-23	2020-21	2021-22	2022-23
July	18733	29056	39219	17072	22268	29175
August	15583	33867	42921	16419	27350	32745
September	19138	33906	42896	19947	26599	27763
October	19605	35093	37553	18516	26248	28504
November	25652	32710	39050	20427	26707	27341
December	22715	43555	24849	20412	30981	25398
January	21952	41357	27143	22942	32490	26960
February	19920	41186	18402	24491	27498	23554
March	28993	50454	27760	26647	32414	29701
April	26731	47981	33796	24752	32224	28784
May	22906	34827	42434	26185	31558	34536
June	34150	48233		28836	34975	

Graph 14: Twelve months imports of iron & steel



Graph 15: Twelve months imports of plastics & articles

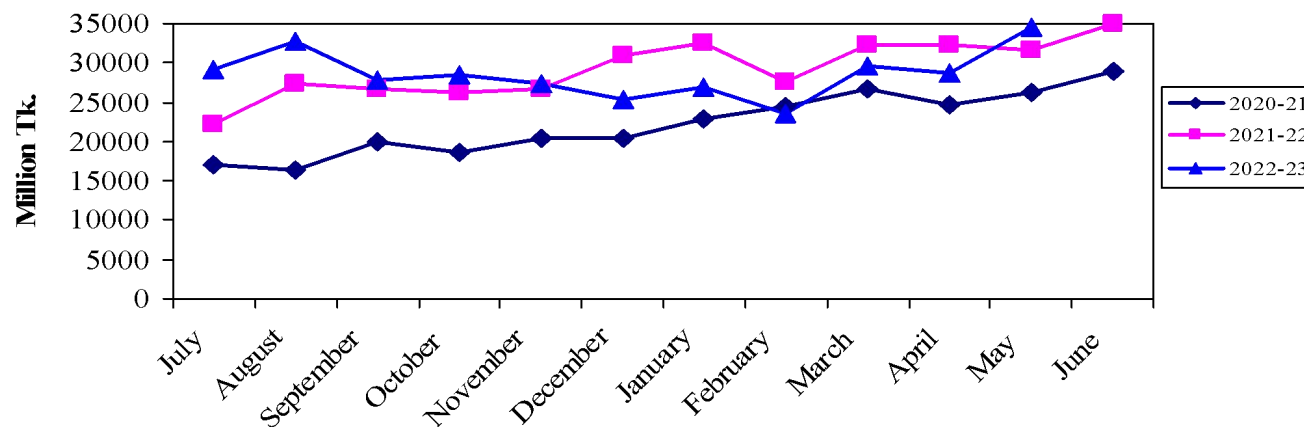


Table 12. Point to point percent change in external trade (goods)

(In million taka)

Items	March-May			May		
	2021-22	2022-23	Change in percent	2021-22	2022-23	Change in percent
1. Export(Commodities)	1183853	1403371	18.54	337859	512808	51.78
2. Import (Commodities)	2302794	2318175	0.67	740771	903485	21.97
3.Trade balance(1-2)	-1118941	-914804	17.87	-402912	-390677	29.82

Table13. Top trading partners – total trade (goods), May-2023

(In million taka)

Country	Exports	Imports	Total	Rank	Percent of Total Trade
China	10861	231111	241972	1	17.08
India	16800	122624	139424	2	9.84
USA	92006	19016	111022	3	7.84
Singapore	1780	98785	100565	4	7.10
Germany	56168	8127	64295	5	4.54
United Kingdom	45285	4257	49542	6	3.50
Brazil	1331	48084	49415	7	3.49
Japan	16897	21336	38233	8	2.70
Malaysia	2511	35199	37710	9	2.66
Canada	18394	17735	36129	10	17.08

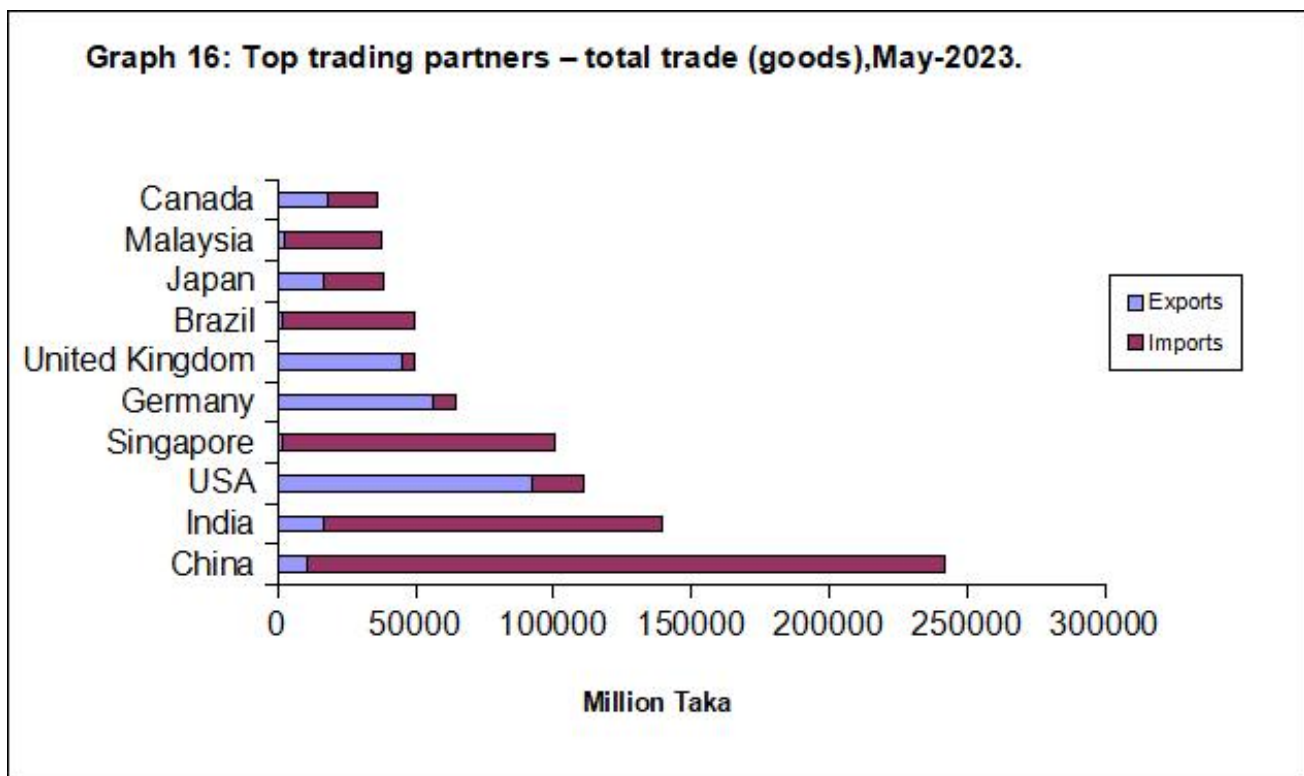


Table 14. Top trading partners – exports (goods), May - 2023

(In million taka)

Country	Export	Rank	Percent of Total Export
United States	92006	1	17.94
Germany	56168	2	10.95
United Kingdom	45285	3	8.83
Spain	30285	4	5.91
France	29783	5	5.81
Other country	23922	6	4.66
Italy	23147	7	4.51
Netherlands	19304	8	3.76
Poland	18952	9	3.70
Canada	18394	10	3.59

Table 15. Top trading partners – imports (goods), May - 2023

(In million taka)

Country	Import	Rank	Percent of Total Import
China	231111	1	25.58
India	122604	2	13.57
Singapore	98785	3	10.93
Brazil	48084	4	5.32
Malaysia	35199	5	3.90
Indonesia	32515	6	3.60
Hongkong	25233	7	2.79
Japan	21336	8	2.36
Other Contri	20509	9	2.27
Korea REP	20314	10	2.27

Table 16. Monthly merchandise export (2-digit HS code)

(In million taka)

HS Code	Commodities	2022-23		% change from previous month
		Apr'23	May'23	
1	Live animals	0.01	0.01	0.00
2	Meat and edible meat offal	1.18	0.89	-24.58
3	Fishes, crustacean and other aquatic	2658.28	2950.64	11.00
4	Dairy produces edible product of animal origin.	5.5	16.31	196.55
5	Products of animal origin	234.64	132.91	-43.36
6	Live tree Plant bulb root etc.	-	0.20	-
7	Edible vegetables, roots as tubers	691.63	520.55	-24.74
8	Edible fruits and nuts citrus fruits	20.27	40.87	101.63
9	Coffee, tea, mate and spices	412.84	477.12	15.57
10	Cereals	5.07	-	-
11	Product of milling industry : malt etc.	49.53	31.22	-36.97
12	Oil seeds and oleaginous fruits	29.5	28.25	-4.24
13	Lac, gum resin vegetable sap/ extract	59	130.15	120.59
14	Vegetable plaiting materials	11.94	82.77	593.22
15	Animal or vegetable fats and oils	666.45	553.86	-16.89
16	Preparations of meat or fish etc.	45.87	46.48	1.33
17	Sugar and sugar confectionery	188.71	195.47	3.58
18	Cocoa and cocoa preparations	11.96	25.27	111.29
19	Preparations of cereals, flour, starch etc.	1364.88	1394.19	2.15
20	Preparations of vegetable fruits, nuts, etc.	542.77	465.29	-14.27
21	Misc. edible preparations	22.36	5.39	-75.89
22	Beverages, spirits and vinegar	363.45	509.74	40.25
23	Residues & waste from the food industry	19.83	31.51	58.90
24	Tobacco mfg tobacco substitutes	924.89	1043.56	12.83
25	Salt, sulphr etc. & plastering metals stone cement	106.69	184.68	73.10
26	Ores, slag and ash	223.53	483.83	116.45
27	Mineral, fuels/oils etc.	79.99	225.30	181.66
28	Inorganic chem. comp of specious metals etc.	650.57	542.38	-16.63
29	Organic chemicals	161.58	80.65	-50.09
30	Pharmaceutical products	1269.28	1715.33	35.14
31	Fertilizers	-	-	-
32	Tanning/dyeing ext; dye pigments etc.	4.69	7.55	60.98
33	Essential oils, perfumery/toilet pre.	20.5	12.14	-40.78

Table 16. Monthly merchandise export (2-digit HS code)

(in million taka)

HS Code	Commodities	2022-23		% change from previous month
		Apr'23	May'23	
34	Soap, organic Surface-active agents etc.	55.66	69.30	24.51
35	Albuminoidal substitute starches, glues etc.	23.23	36.91	58.89
36	Explosive pyrotechnic products	0.01	-	-100.00
37	Photographic/cinematographic goods	-	-	-
38	Miscellaneous chem. products	365.97	336.41	-8.08
39	Plastics and articles thereof	1667.68	2133.72	27.95
40	Rubber and articles thereof	296.07	428.52	44.74
41	Raw hides & skins, leather	1024.41	1200.03	17.14
42	Articles of Leather/Animal Gut	3175.98	3989.71	25.62
43	Fur skins & artificial fur. Mfg.	-	-	-
44	Wood & art. of wood; wood charcoal	158.99	98.43	-38.09
45	Cork and articles of cork	-	-	-
46	Manufactures of straw etc.	267.78	308.17	15.08
47	Pulp/ wood/fibrous cellulose materials etc.	-	0.01	-
48	Paper & paper board; art. P. pulp etc.	1914.62	2703.42	41.20
49	Printed books, news papers, pictures etc.	39.8	86.98	118.54
50	Silk	-	5.33	-
51	Wool, fine/coarse animal hair etc.	-	-	-
52	Cotton	3863.05	5199.43	34.59
53	Other vegetable, Textile fibres, paper/yarn etc	6718.83	7682.20	14.34
54	Man-made filaments	1139.7	1381.47	21.21
55	Man-made staple fibres	1158.83	1621.79	39.95
56	Wadding felts nonwovens, special yarn etc.	653.66	943.32	44.31
57	Carpet other text. floor coverings	160.74	263.83	64.13
58	Special woven fabrics, tufted tex.fabrics etc.	732.37	824.23	12.54
59	Impregnated, coated, textile fabrics etc.	435.08	675.98	55.37
60	Knitted or crocheted fabrics	1129.43	1615.33	43.02
61	Article of appl. clothing accesso. knit / crocht.	189407.8	240450.14	26.95
62	Article of appl. clothing accesso. knit/	154995.91	182419.55	17.69
63	Other made up textile articles etc.	9101.05	9314.55	2.35
64	Footwear, gaiter & like etc.	8311.61	11097.56	33.52
65	Headgear and parts thereof	3072.66	4003.97	30.31

Table 16. Monthly merchandise export (2-digit HS code)

(in million taka)

HS Code	Commodities	2022-23		% change from previous month
		Apr'23	May'23	
66	Umbrellas, sun umbrellas, walk sticks etc.	3.66	-	-
67	Prepared feathers & down/articles etc.	1039.28	845.44	-18.65
68	Art of stone, plastic, cement etc.	5.58	40.47	625.27
69	Ceramic products	300.85	480.66	59.77
70	Glass and glassware	119.99	155.85	29.89
71	Natural/culture pearls precious stones etc.	6.87	4.16	-39.45
72	Iron or steel	432.64	423.55	-2.10
73	Articles of iron or steel	386.72	269.39	-30.34
74	Copper and articles thereof	392.71	231.17	-41.13
75	Nickel and articles thereof	19.79	-	-
76	Aluminum and article thereof	168.21	303.79	80.60
78	Lead and articles thereof	0.02	-	-
79	Zinc and articles thereof	14.42	-	-
80	Tin and articles thereof	-	-	-
81	Other base metals, cermets etc.	7.01	0.01	-99.86
82	Tools, cutlery Spon base Metl Part	153.39	144.84	-5.57
83	Miscellaneous art of base metal.	31.62	66.72	111.01
84	Nuclear reactors, boilers etc.	1033.04	9583.96	827.74
85	Electrical mach. & equipment, parts etc.	1505.28	2245.3	49.16
86	Rail/tramway locomotives etc.	16.41	13.59	-17.18
87	Vehicles, other than rail/tram way's & parts etc.	989.42	1150.9	16.32
88	Aircraft, space craft and parts.	16.2	410.7	2435.19
89	Ships, boats & floating structures	8.34	2.21	-73.50
90	Optical,photo,cinematgph.Medical inst.etc.	1824.43	1016.69	-44.27
91	Clocks & watches & parts	16.52	11.88	-28.09
92	Musical /instruments and parts etc.	-	-	-
93	Arms, & ammunition and parts & accessories	18.52	-	-
94	Furniture, bedding, mattresses etc.	696.78	989.3	41.98
95	Toys, games & sports requisites & parts	536.34	824.91	53.80
96	Miscellaneous mfg. articles	2008.29	2634.28	31.17
97	Works/ art, collectors & antiques	1.18	130.71	10977.12
98	Goods Commodities NEC	1.92	2.88	50.00
	Total	412470.08	512808.16	24.33

Table 17. Monthly export of major commodities (4 digits)

(In million taka)

HS Code	Commodities	2022-23		% change from previous month
		Apr'23	May'23	
303	Fish frozen	415.04	392.32	-5.47
304	Fish fillet, other fish meal	-	-	-
305	Fish dried	41.01	8.65	-78.91
306	Shrimps & prawns frozen	1756.20	1829.69	4.18
307	Molluscs	77.91	165.88	112.91
506	Bone and horn- cores	-	-	-
709	Vegetable fresh, chilled other	81.25	31.70	-60.98
902	Tea	5.86	15.24	160.07
1006	Rice	4.66	-	-
2401	Un-manufactured tobacco	852.58	966.83	13.40
2710	Petro oil/oil bitum minrl, nec	33.01	14.13	-57.19
3003-004	Pharmaceutical product	1264.00	1700.46	34.53
3901-926	Plastic & articles thereof	1167.66	1953.72	67.32
4102	Raw hides & skin of sheep's or lambs	-	-	-
4103	Raw hides and skin other	6.39	10.70	67.45
4104	Leather Bovine/Equin W/Out hair	790.43	852.08	7.80
4105	Tanned or crust skins of sheep or lambs	-	-	-
4106	Tanned or crust hides and skins or other animals	41.85	67.65	61.65
4107	Leather hole hides and skins or crusting	171.53	255.62	49.02
4113	Leather further prepared after tanning or crusting including parchment-dressed leather of other animals	13.42	13.97	4.10
4202	Trunks, suit-case, vanity-cases, brief cases, and other	2900.52	3671.48	26.58
4602	Basket work, wicker work, and other articles	267.68	297.18	11.02
5303	Jute and other textile bast fibres, raw or retted	1872.13	1963.81	4.90
5307	Jute yarn	3865.71	4676.42	20.97
5310	Woven fabrics and jutes or of other textile bast fibres	956.16	1028.99	7.62
5607	Jute twine, cordage, roofs and cables	268.43	300.31	11.88
6101-117	Readymade garments men's women's and girls knitted and crocheted	189407.80	227645	20.19
6201-217	Readymade garments men's women's and girls not knitted and crocheted	57198.79	122419.6	114.02
6305	Sacks and bags, of a kind used for the packing of goods	1315.36	997.02	-24.20
6401-6406	Foot ware with outer soles and uppers of rubber or of plastics and other	8311.62	11097.56	33.52
6505	Heads and other headgear, knitted or crocheted	3031.58	3905.07	28.81
	Total	273087	386281.08	41.45

Table 18. Monthly merchandise import (2-digit HS code)

(In million taka)

H S Code	Commodities	2022-23		% change From previous month
		Apr'23	May'23	
1	Live animals	328.12	676.40	106.14
2	Meat and edible meat offal	-	0.00	-
3	Fishes, crustacean and other aquatic	489.96	793.25	61.90
4	Dairy produces edible product of animal origin.	3015.55	4768.22	58.12
5	Products of animal origin	755.47	872.77	15.53
6	Live tree and other plants etc.	7.95	17.03	114.21
7	Edible vegetables, roots as tubers	21869.96	11544.37	-47.21
8	Edible fruits and nuts citrus fruits	7582.57	4113.36	-45.75
9	Coffee, tea, mate and spices	5105.67	5660.38	10.86
10	Cereals	18918.48	33352.14	76.29
11	Product of milling industry: malt etc.	154.89	154.45	-0.28
12	Oil seeds and oleaginous fruits	10878.41	20062.53	84.43
13	Lac, gums, resins , vegetable saps & extra	109.00	144.45	32.52
14	Vegetable plaiting materials	19.37	27.85	43.78
15	Animal or vegetable fats and oils	59500.31	26299.47	-55.80
16	Preparations of meat or fish etc.	3.87	17.73	358.14
17	Sugar and sugar confectionery	16262.34	26290.21	61.66
18	Cocoa and cocoa preparation	176.07	186.11	5.70
19	Preparations of cereals, flour, starch etc.	1670.28	1802.20	7.90
20	Preparations of vegetable, fruits, nuts, etc.	367.95	390.11	6.02
21	Misc. edible preparations	2324.62	1740.72	-25.12
22	Beverages, spirits and vinegar	89.89	83.26	-7.38
23	Residues & waste from the food industries	13662.11	15458.92	13.15
24	Tobacco mfg tobacco substitutes	61.71	237.00	284.05
25	Salt, sulphur, etc. and plastering metals stone cement	21030.91	21417.41	1.84
26	Ores, slag and ash	3085.33	3297.22	6.87
27	Mineral, fuels/oils etc.	48663.65	172310.43	254.08
28	Inorganic. Chem.: compounds of specious metals etc.	4966.10	6207.79	25.00
29	Organic Chemicals	11588.97	14215.33	22.66
30	Pharmaceutical products	4053.16	8573.64	111.53
31	Fertilizers	18346.45	18202.26	-0.79
32	Tanning/dyeing ext; dye pigments etc.	7053.00	9709.24	37.66
33	Essential Oils, perfumery/toilet pre.	1356.54	1744.71	28.61
34	Soap, organic surface-active agents etc.	2077.81	2857.70	37.53

Table 18. Monthly merchandise import (2-digit HS code)

(In million taka)

H S Code	Commodities	2022-23		% change from previous month
		Apr'23	May'23	
35	Albuminoidal substitute starches, glue	1246.00	1665.02	33.63
36	Explosives pyrotechnic products etc.	33.23	62.10	86.88
37	Photographic/cinematographic goods	253.04	399.06	57.71
38	Miscellaneous chem. products	8512.03	10443.96	22.70
39	Plastics and articles thereof	28784.25	34536.02	19.98
40	Rubber and articles thereof	3462.68	4184.51	20.85
41	Raw hides & skins, leather	1491.95	1568.19	5.11
42	Articles of Leather/Animal gut	233.78	376.03	60.85
43	Fur skins & artificial fur. Mfg.	18.07	24.69	36.64
44	Wood & art. of wood; wood charcoal	452.46	692.67	53.09
45	Cork and articles of cork	7.37	5.60	-24.02
46	Manufactures of straw etc.	2.00	1.03	-48.50
47	Pulp/ wood/fibrous cellulosic materials etc.	3111.61	2921.93	-6.10
48	Paper & paper board; art. Paper pulps etc.	9214.04	11399.38	23.72
49	Printed Book, News paper & picture	265.45	813.73	206.55
50	Silk	47.97	15.22	-68.27
51	Wool, fine/coarse animal hair etc.	788.46	1904.84	141.59
52	Cotton	65917.13	86265.11	30.87
53	Other vegetable, textile fibres, paper/yarn etc.	1193.20	1565.66	31.22
54	Man-made filaments	19794.76	23604.00	19.24
55	Man-made staple fibres	20382.69	24106.46	18.27
56	Wadding felts non-wovens, special yarn etc.	1608.73	2026.99	26.00
57	Carpet other text. floor coverings	54.26	110.83	104.26
58	Special woven fabrics, tufted textile fabrics etc.	5739.10	8507.84	48.24
59	Impregnated, coated, textile fabrics etc.	4636.96	5381.33	16.05
60	Knitted or crocheted fabrics	18591.15	26270.76	41.31
61	Article of apparel. clothing accessor. knit /crocht	195.12	190.95	-2.14
62	Articl of apparel.clothing accessor.n-knit/ crocht.	1893.16	2194.73	15.93
63	Other made up textile articles etc.	418.86	783.14	86.97
64	Footwear, gaiter & like etc.	1911.66	2290.69	19.83
65	Headgear and parts thereof	77.00	147.62	91.71
66	Umbrellas, sun umbrellas, walk sticks etc.	50.72	114.04	124.84

Table18. Monthly merchandise import (2-digit HS code)

(In million taka)

HS Code	Commodities	2022-23		% change from previous month
		Apr'23	May'23	
67	Prepared feather & down articles	470.79	360.01	-23.53
68	Art of stone, plastic, cement etc.	790.81	1415.77	79.03
69	Ceramic products	885.30	1107.17	25.06
70	Glass and glassware	1303.50	1595.11	22.37
71	Natural/culture pearls & precious stones	262.92	168.75	-35.82
72	Iron or steel	33795.78	42433.55	25.56
73	Articles of iron or steel	10198.85	14626.13	43.41
74	Copper and articles thereof	2785.78	2681.74	-3.73
75	Nickel and articles thereof	2.33	25.5	994.42
76	Aluminum and article thereof	3867.61	8379.33	116.65
78	Lead and articles thereof	1079.38	1195.19	10.73
79	Zinc and articles thereof	569.51	1194.2	109.69
80	Tin and articles thereof	40.44	15.34	-62.07
81	Other base metals, cermet etc.	82.50	29.39	-64.38
82	Tools, implements, cutlery etc.	490.93	690.34	40.62
83	Miscellaneous art of base metal.	1674.51	1889.88	12.86
84	Nuclear reactors, boilers etc.	46572.66	73398.79	57.60
85	Electrical mach. & equipment, parts etc.	28543.37	45632.03	59.87
86	Rail/tramway locomotives etc.	1944.30	2550.99	31.20
87	Vehicles, other than rail/tram way's & parts etc.	8037.94	11302.99	40.62
88	Aircraft, space craft and parts.	260.57	495.69	90.23
89	Ships, boats & floating structures	14784.26	7060.38	-52.24
90	Optical, Photograph, Cinematograph, Medical Inst.	6148.54	7325.19	19.14
91	Clocks & watches & parts.	154.30	158.72	2.86
92	Musical /instruments and parts etc.	6.74	42.87	536.05
93	Arms, & ammunition and parts & accessories	2.40	1395.09	58028.75
94	Furniture, bedding, mattresses etc.	993.12	1577.35	58.83
95	Toys, games & sports requisites & parts etc.	294.16	331.32	12.63
96	Miscellaneous mfg. articles	5055.40	6602.01	30.59
97	Works/ art, collectors & antiques	1.79	1.39	-22.35
98	Goods commodities nec	1.47	0.12	-91.84
	Total	757622.77	903485.12	19.25

Table 19. Monthly import of major commodities (4 digits)

(In million taka)

H S Code	Commodities	2022-23		% change From previous month
		Apr'23	May'23	
401	Milk & cream	44.07	6.74	-84.71
703	Onion & Garlic	1130.46	3314.16	193.17
713	Dried leguminous vegetable	20680.02	8125.63	-60.71
804	Dates	2276.60	613.07	-73.07
806	Grapes	1558.48	569.22	-63.48
808	Apples	1224.57	853.38	-30.31
904	Pepper	1708.98	1871.43	9.51
1001	wheat	18156.51	31266.12	72.20
1006	Rice	464.20	379.78	-18.19
1108	Starches	151.63	143.33	-5.47
1201-1212	Oil seeds	10874.76	20062.52	84.49
1507	Soya bean oil	20391.13	12392.99	-39.22
1511	Palm Oil	38564.45	12929.48	-66.47
1701	Sugar	15689.72	25345.65	61.54
2401	Un-manufactured tobacco	26.36	53.33	102.31
2523	Cement	10937.83	10843.10	-0.87
2710	Petroleum product	21075.51	144245.55	584.42
2801-2851	In organic Chemicals	4966.11	6207.56	25.00
2901-2942	Organic Chemicals	11589.01	14215.33	22.66
3101-3105	Fertilizers	18346.45	18202.26	-0.79
3201-3215	Tanning & dyeing	7803.21	9709.24	24.43
3801-3825	Chemical product	8483.02	10425.64	22.90
3901-3926	Plastic & articles thereof	28784.24	34536.02	19.98
4801-4823	Paper & paper board	9214.04	11399.39	23.72
5201-5203	Raw cotton	26184.75	36603.66	39.79
5205-5207	Cotton yarn	12261.16	15173.91	23.76
5208-5212	Cotton fabric	27419.43	34435.05	25.59
5402-5406	Synthetic yarn	8856.13	9113.88	2.91
5407-5408	Synthetic fabric	10243.38	13646.01	33.22
5504-5507	Staple fibre	4501.72	4326.92	-3.88
5509-5511	Yarn of staple fibre	6615.19	7639.23	15.48
5512-5516	Fabric of staple fibre	6502.32	8184.45	25.87
7201-7229	Iron & steel	33795.75	43774.71	29.53
7301-7326	Article of iron & steel	10997.30	14626.15	33.00
7601-7616	Aluminum & article thereof	3867.63	8379.3	116.65
8402-8485	Machinery & parts	46119.84	65284.73	41.55
8501-8548	Electrical goods	28543.38	45563.73	59.63
8607-8609	Rail, tramway, locomotive	83.66	142.57	70.42
8701-8716	Vehicle	7255.35	11302.99	55.79
8902,8903,8908	Ships, boat, floating structure	14368.97	4949.77	-65.55
9001-9033	Optical, Photo, Cinema etc.	6148.55	6497.67	5.68
Total		507905.87	707355.65	39.27

Table 20. Re-export Value, May -2023 by 2 digit HS Code.

(In million taka)

HS CODE	HS DESCRIPTIONS	
	Total: Re-Exports	4448.21
03	Fishes, crustacean and other aquatic	8.52
30	Pharmaceutical products	0.01
39	Plastics and articles thereof	18.86
40	Rubber and articles thereof	2.53
42	Articles of Leather/Animal gut	0.03
49	Printed Book, News paper & picture	0.72
54	Man-made filaments	0.09
56	Wadding felts non-wovens, special yarn etc.	24.86
57	Carpet other text. floor coverings	0.22
60	Knitted or crocheted fabrics	0.08
61	Article of apparel. clothing accessor. knit /crocht	0.11
65	Headgear and parts thereof	0.02
70	Glass and glassware	0.00
73	Articles of iron or steel	104.38
76	Aluminum and article thereof	2.49
81	Other base metals, cermets etc.	0.01
82	Tools, implements, cutlery etc.	95.24
83	Miscellaneous art of base metal.	0.42
84	Nuclear reactors, boilers etc.	3476.60
85	Electrical mach. & equipment, parts etc.	487.32
87	Vehicles, other than rail/tram way's & parts etc.	6.99
90	Optical, Photograph, Cinematograph,Medical Inst.	87.39
94	Furniture, bedding, mattresses etc.	0.30
96	Miscellaneous mfg. articles	0.34
97	Works/ art, collectors & antiques	130.69

Table 21. Re-import Value, May - 2023 by 2 digit HS Code.

(In million taka)

HS CODE	HS DESCRIPTIONS	
	Total : Re- Imports	107.35
03	Fishes, crustacean and other aquatic	76.82
61	Article of apparel. clothing accessor. knit /crocht	24.97
84	Nuclear reactors, boilers etc.	5.56

Table 22. Temporary Export Value,May -2023 by 2 digit HS Code

(In million taka)

HS CODE	HS DESCRIPTIONS	
	Total : Temporary- Exports	2397.57
40	Rubber and articles thereof	0.80
73	Articles of iron or steel	12.38
84	Nuclear reactors, boilers etc.	1953.85
85	Electrical mach. & equipment, parts etc.	14.73
88	Aircraft, space craft and parts.	410.70
90	Optical, Photograph, Cinematograph,Medical Inst.	5.11

Table 23 . Temporary Import Value,May - 2023 by 2 digit HS Code

(In million taka)

HS CODE	HS DESCRIPTIONS	
	Total : Temporary- Imports	89.99
32	Rubber and articles thereof	0.10
34	Soap, organic surface-active agents etc.	0.01
35	Albuminoidal substitute starches, gluese	0.00
39	Plastics and articles thereof	0.86
40	Rubber and articles thereof	0.15
42	Articles of Leather/Animal gut	0.30
52	Cotton	0.01
56	Wadding felts non-wovens, special yarn etc.	0.16
61	Article of apparl. clothing accessor. knit /crocht	0.15
62	Articl of apparl.clothing accessor.n-knit/ crocht.	0.07
63	Other made up textile articles etc.	0.23
65	Headgear and parts thereof	0.11
68	Art of stone, plastic, cement etc.	0.08
69	Ceramic products	0.00
72	Iron or steel	0.08
73	Articles of iron or steel	4.70
76	Aluminum and article thereof	0.15
82	Tools, implements, cutlery etc.	1.45
83	Miscellaneous art of base metal.	0.01
84	Nuclear reactors, boilers etc.	45.22
85	Electrical mach. & equipment, parts etc.	15.86
86	Rail/tramway locomotives etc.	17.54
87	Vehicles, other than rail/tram way's & parts etc.	0.52
90	Optical, Photograph, Cinematograph,Medical Inst.	2.45
91	Clocks & watches & parts.	0.00
94	Furniture, bedding, mattresses etc.	0.16
96	Miscellaneous mfg. articles	0.09