

***Monthly Release of
Foreign Trade Statistics (FTS)
November 2016***

Bangladesh Bureau of Statistics (BBS) of Statistics and Informatics Division (SID) compiles and publishes Foreign Trade Statistics (FTS) on a regular basis. This publication presents monthly trend of Bangladesh foreign trade statistics including statistics on top trading partners, essential import commodities, and last twelve months scenario of major export and import goods for November, 2016.

Merchandise trade data of this publication are provided by National Board of Revenue (NBR) and while data on services from Bangladesh Bank. Data presented in this publication are provisional and subject to revision. All these provisional data will be subsequently reviewed and revised. Revised data are being presented in next issues.

In November, 2016, total export and import of goods and services is recorded at increased by Tk. 247.71 and increased by Tk. 439.91 billion respectively resulting in a trade deficit at goods and services of Tk. 192.20 billion. The growth of export and import in November, 2016 increased by 5.18 and increased by 7.08 percent respectively comparing to October, 2016 and it is increased by 19.44 and increased by 18.60 percent respectively comparing to November, 2015.

For the three months ending in November, 2016 the moving average of export of goods and services was Tk. 228.13 billion, while the moving average of import of goods and services was Tk. 427.89 billion resulting in an average trade deficit of Tk. 199.76 billion. For the three months ending in October, 2016 the average trade deficit was Tk. 171.62 billion, reflecting average exports of Tk. 238.57 billion and average imports of Tk. 410.19 billion.

Indicators of this publication are expected to provide a good idea about the trend of export and import of the country over the previous months of a year. This monthly release would be a useful document for planners, policy makers, researchers, development partners/agencies, academicians and other stakeholders.

Table 1: Export, import and trade deficits

(In billion taka)

Period	Export			Import			Trade balance		
	Total	Goods	Services	Total	Goods	Services	Total	Goods	Services
2014-15	2637.03	2408.66	411.38	4165.57	3671	593.77	-1528.53	-1262.4	-275.65
2015-16	2898.06	2634.98	263.38	4357.7	3869.35	488.35	-11869.5	-1234.67	-224.97
2016-17									
Dec-15	288.52	250.94	37.58	379.61	345.29	34.32	-91.09	-94.35	3.26
Jan-16	269.02	248.65	20.37	366.66	322.45	44.21	-97.64	-73.8	-23.84
Feb-16	244.23	223.14	21.09	346.30	305.85	40.45	-102.07	-82.71	-19.36
Mar-16	244.68	220.87	23.81	369.97	332.75	37.22	-125.29	-111.88	-13.41
Apr-16	232.78	209.12	23.66	354.67	319.74	34.93	-121.89	-110.62	-11.27
May-16	257.69	235.85	21.84	425.05	385.23	39.82	-167.36	-149.38	-17.98
Jun-16	305.85	278.87	27.28	414.30	346.49	67.81	-10845	-67.92	-40.53
July-16	-62.71	197.29	-260	-191.94	267.06	-459	-254.65	-69.77	-199.00
Aug-16	279.01	257.61	21.40	386.82	343.07	43.75	-107.81	-85.46	-22.35
Sep-16	201.17	174.59	26.58	432.92	384.08	48.84	-231.75	-209.49	-22.26
Oct-16	235.52	211.69	23.83	410.83	371.63	39.20	-175.31	-159.94	-15.37
Nov-16	247.71	226.05	21.66	439.91	384.86	55.05	-192.2	-158.81	-33.39

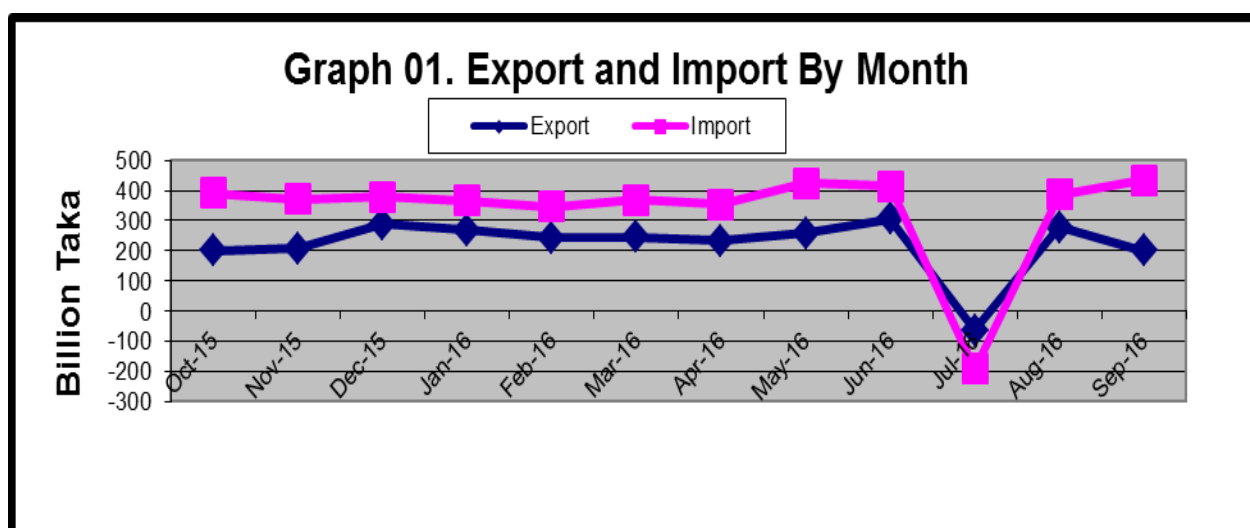
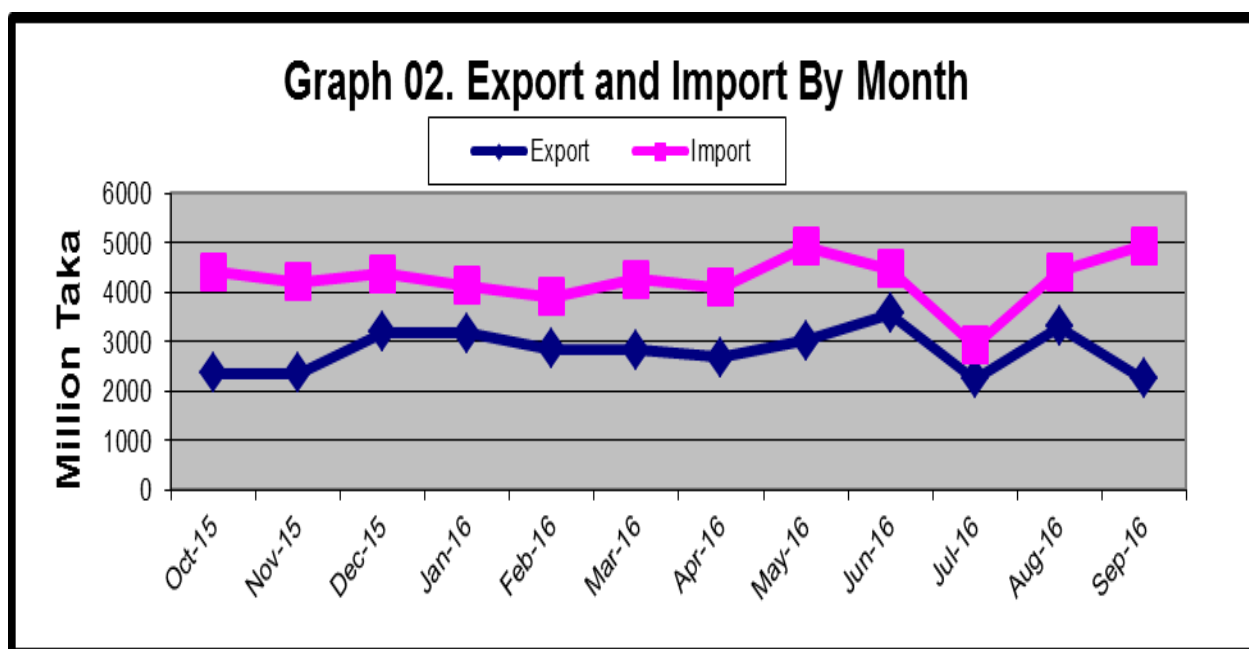


Table 2: Export, import and trade deficits

(In million US \$)

Period	Export			Import			Trade balance		
	Total	Goods	Service	Total	Goods	Service	Total	Goods	Service
2014-15	31123	30594	229	47675	47081	594	-16501	-14289	-365
2015-16	33744	33480	264	49668	49182	486	-15924	-15702	-222
2016-17									
Dec-15	3196	3158	38	4380	4346	34	-1184	-1188	4
Jan-16	3169	3149	20	4128	4084	44	-959	-935	-24
Feb-16	2846	2825	21	3911	3871	40	-1065	-1046	-19
Mar-16	2825	2801	24	4257	4220	37	-1432	-1419	-13
Apr-16	2676	2652	24	4090	4055	35	-1414	-1403	-11
May-16	3013	2991	22	4926	4886	40	-1913	-1895	-18
Jun-16	3560	3533	27	4461	4394	67	-901	-861	-40
July-16	2242	2505	-260	2928	3387	-459	-686	-885	-199
Aug-16	3307	3286	21	4420	4376	44	-1113	-1090	-23
Sep-16	2254	2227	27	4948	4899	49	-2694	-2672	-22
Oct-16	2724	2700	24	4779	4740	39	-2055	-2040	-15
Nov-16	2893	2871	22	4942	4887	55	-2049	-2016	-33



Ta

Table 3. Percent change from the previous month (goods)

(In million taka)

Items	2015-16		
	Oct'16	Nov'16	Percent change from the previous month
1. Export (Commodities)	211689	226052	6.78
1. Ready made Garments	168989	181430	7.36
2. Shrimps and prawn	4357	3395	-22.08
3. Vegetable textiles fiber/ yarn	5752	5884	2.29
4. Made-up textiles articles	6162	6059	-1.67
5. Raw hides, skins & leathers	1836	1913	4.19
6. Raw jute	1455	1456	0.07
7. Footwear Special woven fabrics	4471	4684	4.76
8. Fertilizer	-	-	-
9. Hats and other head gear	1302	1324	1.69
10. Special woven fabrics	291	395	35.74
11. Others	17074	19512	14.28
2. Import (Commodities)	371626	384859	3.56
1. Machinery & parts	38704	41581	7.43
2. Petroleum product and oil	41139	49770	20.98
3. Electric Machinery	20066	22635	12.80
4. Soya bean and Palm oil	23372	18425	-21.17
5. Raw cotton	12582	11256	-10.54
6. Textile fabrics	642	822	28.04
7. Iron and steel	15077	17180	13.95
8. Plastics and articles	12077	13921	15.27
9. Wheat	13138	7394	-43.72
10. Fertilizer	6618	8625	30.33
11. Others	188211	193250	2.68
3. Trade balance (1-2)	-159937	-158807	-0.71

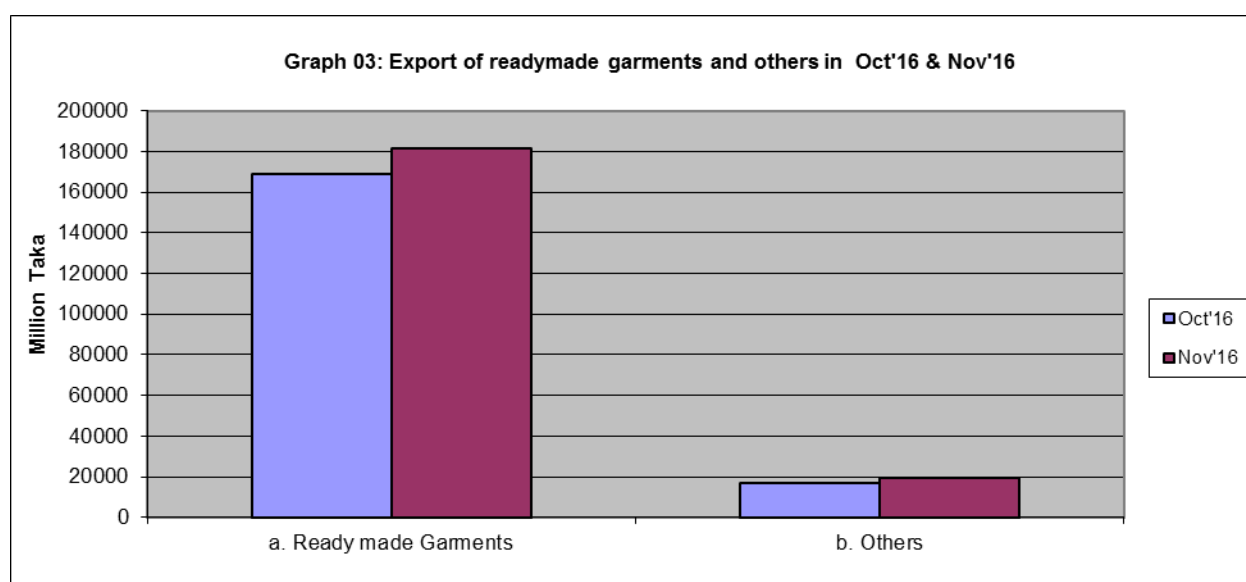


Table 4. Import of Essential Commodities Quantity in M. Ton

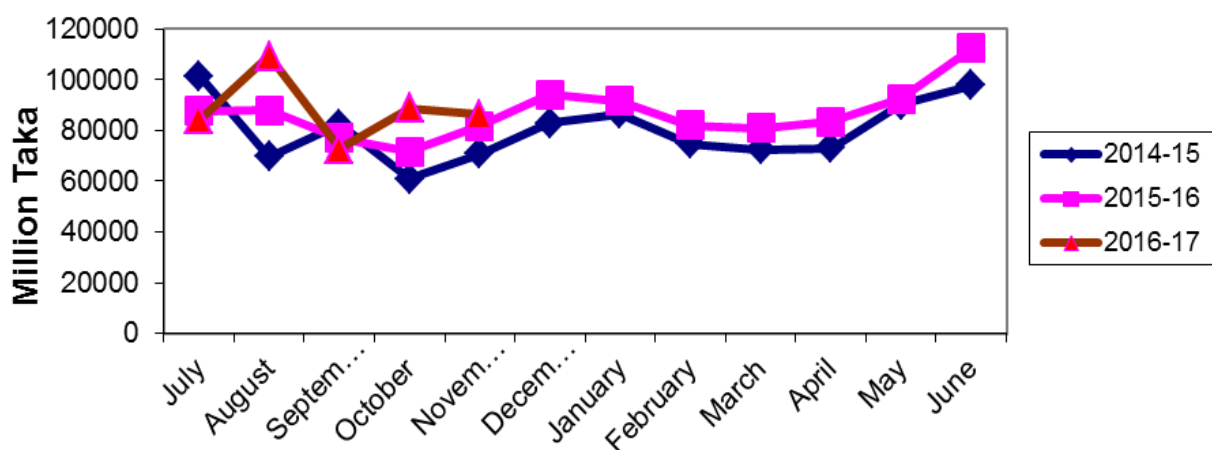
Items	2015-16			
	Oct'16	Nov'16	Percent change from the previous month	Cumulative (June -16)
Import (Commodities)				
1. Raw sugar	103346	135269	30.89	238615
2. Palm oil	251156	162931	-35.13	414087
3. Soya bean oil	151055	150113	-0.62	301168
4. Milk & Cream	6389	11528	80.44	17917
5. Ginger	-	-	-	-
6. Chillies	-	-	-	-
7. Wheat	830913	454811	-45.26	1285724
8. Rice	5793	3399	-41.33	9192
9. Lentil & other	6248	30053	381.00	36301
10. Onion	165510	154833	-6.45	320343
11. Garlic	4412	2830	-35.86	7242
12. Tea	875	666	-23.89	1541
13. Oil seed	17580	129640	637.43	147220

Table 5: Twelve months export of readymade garments during 2014-15 to 2016-17

(In million taka)

Month	Ready made Garments (Knitted)			Ready made Garments (Not Knitted)		
	2014-15	2015-16	2016-17	2014-15	2015-16	2016-17
July	101485	87695	84441	93914	84619	81559
August	69664	88007	109411	63171	88567	104325
September	82360	77130	72743	72051	74889	70095
October	60953	71632	88928	56604	68416	80061
November	70801	81761	86220	77444	90519	95210
December	82837	94109		98742	116152	
January	86721	91736		99008	114106	
February	74703	81963		89141	104054	
March	72390	80884		88990	100523	
April	73066	83374		77882	88899	
May	90165	92649		93251	99029	
June	97901	112423		101655	123404	

Graph 04: Twelve months exports of readymade garment (knitted) .



Graph 05: Twelve months exports of readymade garment (not knitted) .

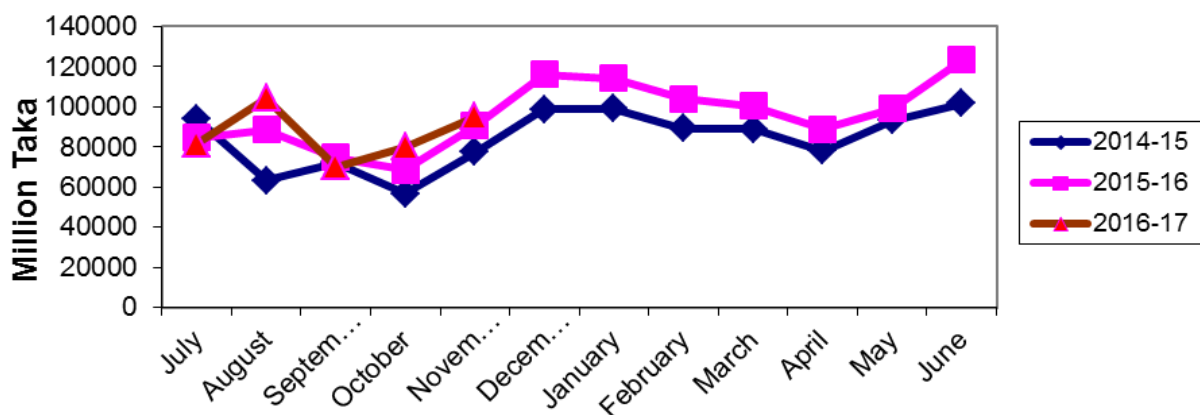


Table 6: Twelve months export of raw hides, skins & leather, 2014-15 to 2016-17

(In million taka)

Month	Raw hides, skins & leather		
	2014-15	2015-16	2016-17
July	2899	1722	1173
August	2230	1914	2269
September	3342	1863	1816
October	2637	1560	1836
November	2335	-	1913
December	2930	1747	
January	2530	2342	
February	1942	1980	
March	2749	1885	
April	2558	1351	
May	2506	1747	
June	2219	2130	

Graph 06: Twelve months exports of raw hides, skins & leather .

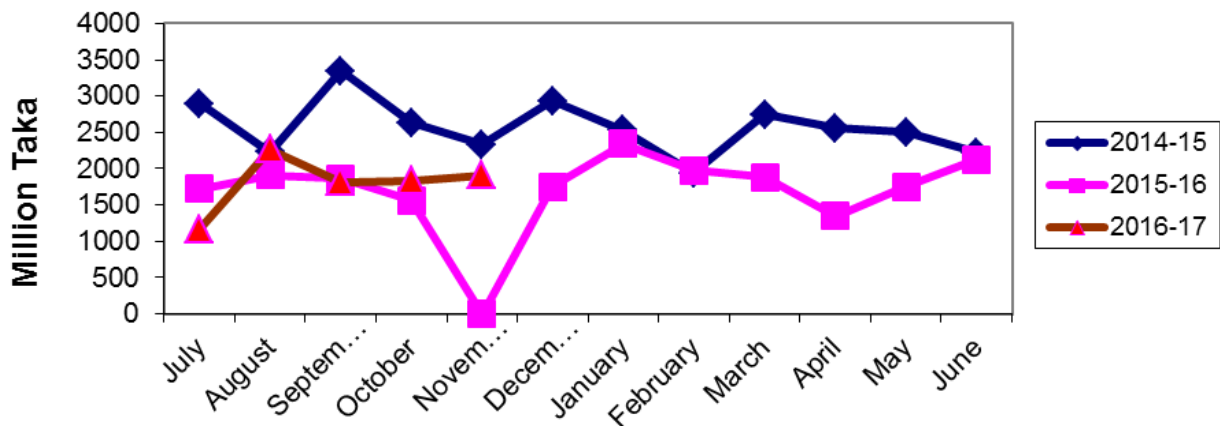


Table 7: Twelve months export of shrimps and prawn, 2014-15 to 2016-17.

(In million taka)

Month	Shrimps and prawn		
	2014-15	2015-16	2016-17
July	4774	2807	2818
August	4199	2537	3803
September	4997	3293	3371
October	3674	4186	4357
November	3738	-	3395
December	3723	3537	
January	2644	3130	
February	2106	2733	
March	2247	2044	
April	1970	2497	
May	2647	3086	
June	2738	3857	

Graph 07 : Twelve months exports of shrimps & prawn .

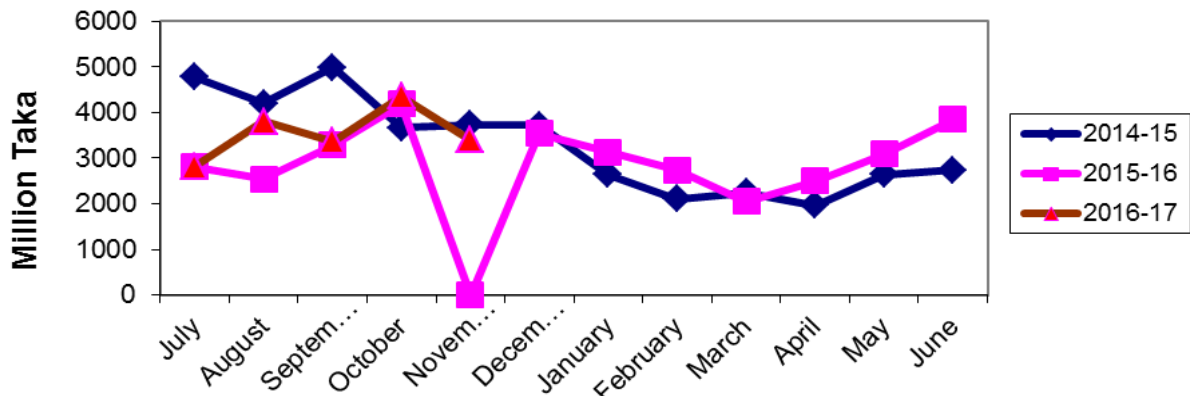


Table 8: Twelve months import of machinery & parts and electrical machinery during 2014-15 to 2016-17.

(In million taka)

Month	Machinery & Parts			Electrical Machinery		
	2014-15	2015-16	2016-17	2014-15	2015-16	2016-17
July	28289	24493	30300	16083	16700	13592
August	32463	31591	40158	19161	18123	19538
September	33942	27158	39180	20119	18939	16764
October	28228	32752	38704	15598	15241	20066
November	29911	32918	41581	15966	15545	22635
December	29267	33183		17134	15165	
January	30114	36994		13332	21949	
February	26528	35261		12858	19203	
March	31018	36707		12829	19436	
April	29399	37742		18018	16414	
May	40908	47508		15808	25174	
June	33530	43394		18484	25045	

Graph 08 : Twelve months imports of machinery & parts .



Graph 09 : Twelve months imports of electrical machinery .

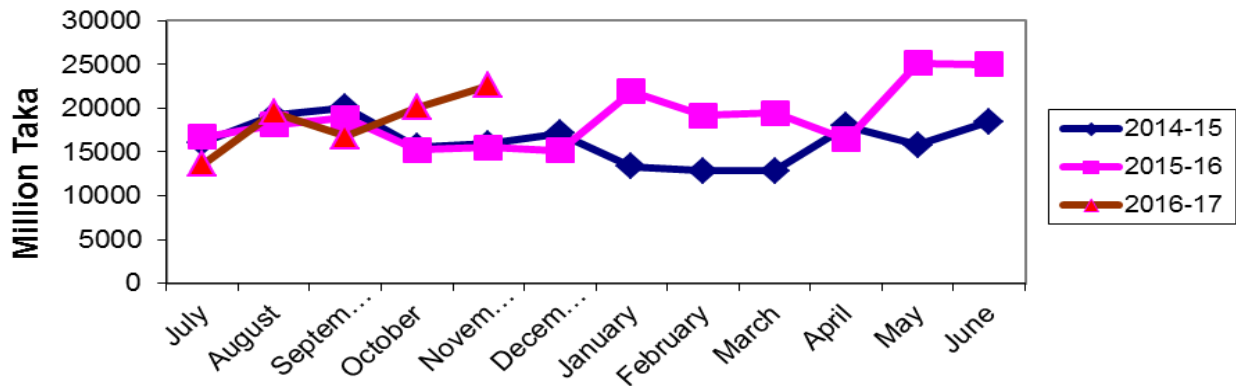
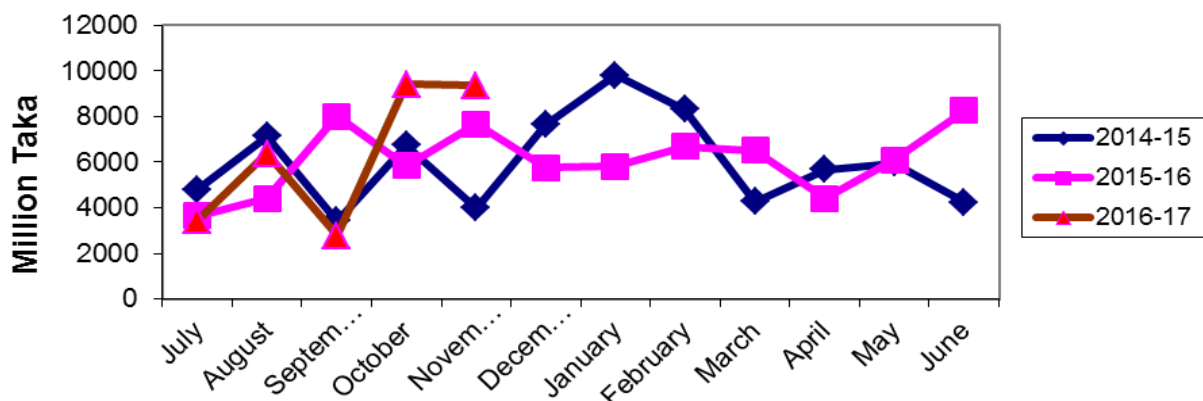


Table 9: Twelve months imports of Soya bean and Palm oil during 2014-15 to 2016-17

(In million taka)

Month	Soya bean			Palm Oil		
	2014-15	2015-16	2016-17	2014-15	2015-16	2016-17
July	4812	3653	3456	20866	6040	5598
August	7149	4408	6371	5369	16473	12532
September	3419	7999	2780	14583	20298	11375
October	6757	5855	9417	9185	11479	13955
November	3994	7681	9370	10064	8193	9055
December	7638	5771		12918	8090	
January	9814	5824		18128	10559	
February	8311	6686		11874	11909	
March	4271	6518		16990	11947	
April	5674	4396		9897	14811	
May	5946	6107		5211	16688	
June	4253	8271		9450	14474	

Graph 10 : Twelve months imports of soya bean oil .



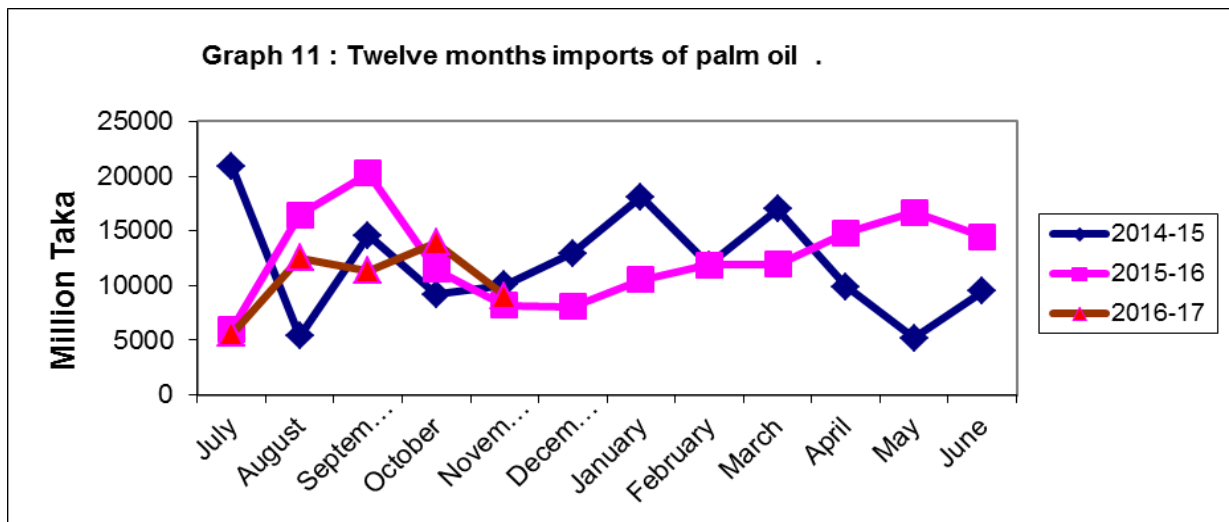
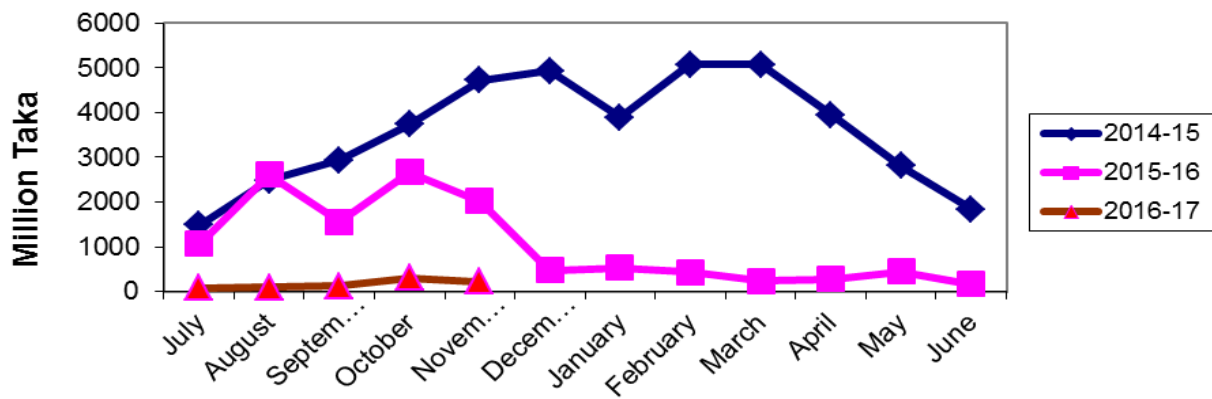


Table 10: Twelve months import of rice and wheat during 2014-15 to 2016-17

(In million taka)

Month	Rice			Wheat		
	2014-15	2015-16	2016-17	2014-15	2015-16	2016-17
July	1489	1064	76	1611	1905	4068
August	2492	2618	96	6300	1199	5193
September	2939	1560	117	7266	6754	11875
October	3743	2671	310	10175	9186	13138
November	4722	2021	217	5291	6682	7394
December	4932	479		4202	6400	
January	3887	526		2917	9773	
February	5073	428		5039	6459	
March	5081	233		7865	4853	
April	3949	272		12385	5500	
May	2813	450		8045	8503	
June	1840	167		7494	7310	

Graph 12 : Twelve months imports of rice .



Graph 13 : Twelve months imports of wheat .

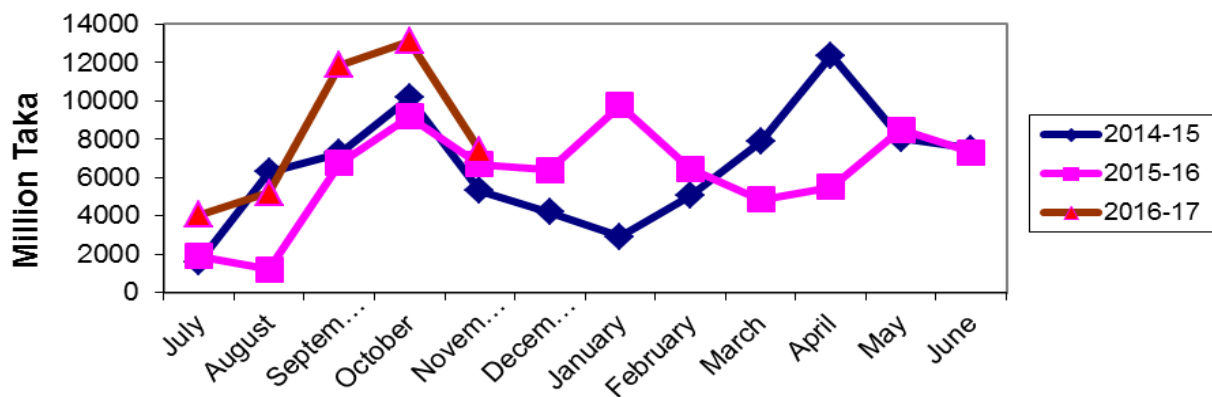
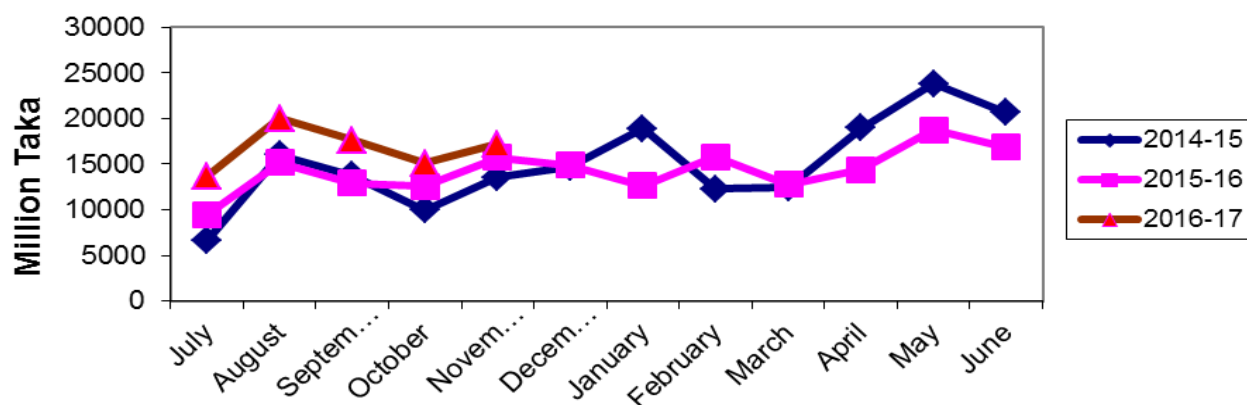


Table 11: Twelve months import of iron & steel and plastics & articles during 2014-15 to 2016-17

(In million taka)

Month	Iron & Steel			Plastics & articles		
	2014-15	2015-16	2016-17	2014-15	2015-16	2016-17
July	6683	9460	13715	11174	10267	9887
August	16007	15195	20027	13502	11898	12990
September	13734	12910	17657	13403	9483	11929
October	9949	12553	15077	10867	11702	12077
November	13530	15719	17180	11119	12187	13921
December	14663	14862		11716	12600	
January	18885	12624		12045	10967	
February	12286	15829		9608	11065	
March	12398	12811		12993	12542	
April	18956	14376		11778	11685	
May	23826	18759		12695	12688	
June	20644	16872		12690	12269	

Graph 14 : Twelve months imports of iron & steel .



Graph 15 : Twelve months imports of plastics & articles .

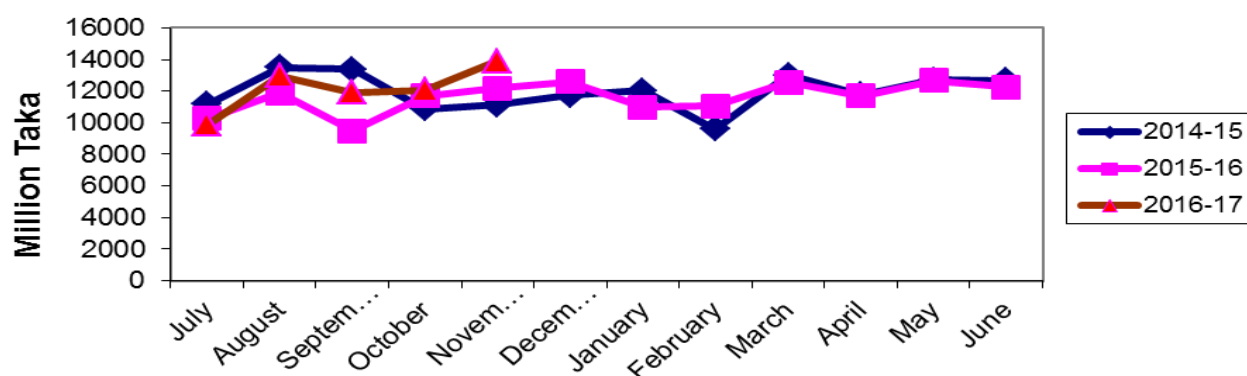


Table 12. Point to point percent change in external trade (goods)

(In million taka)

Items	September-November			November		
	2014-15	2015-16	Change in Percent	2014-15	2015-16	Change in Percent
1. Export(Commodities)	531252	592868	11.60	183295	226052	23.33
2. Import (Commodities)	964660	1023721	6.12	325694	384859	18.17
3.Trade balance(1-2)	-433408	-430853	-0.59	-142399	-158807	11.52

Table13. Top trading partners – total trade (goods), November -2016

(In million taka)					
Country	Exports	Imports	Total	Rank	Percent of Total Trade
China	7557	86485	94042	1	15.39
India	5313	41795	47108	2	7.71
USA	36546	10224	46770	3	7.66
Singapore	863	44511	45374	4	7.43
Germany	35391	5091	40482	5	6.63
United Kingdom	21322	3229	24551	6	4.02
Hong kong	1444	20797	22241	7	3.64
Japan	5730	13054	18784	8	3.07
France	14788	1003	15791	9	2.58
Spain	12899	1811	14710	10	2.41

Graph 16: Top trading partners – total trade (goods), November'2016.

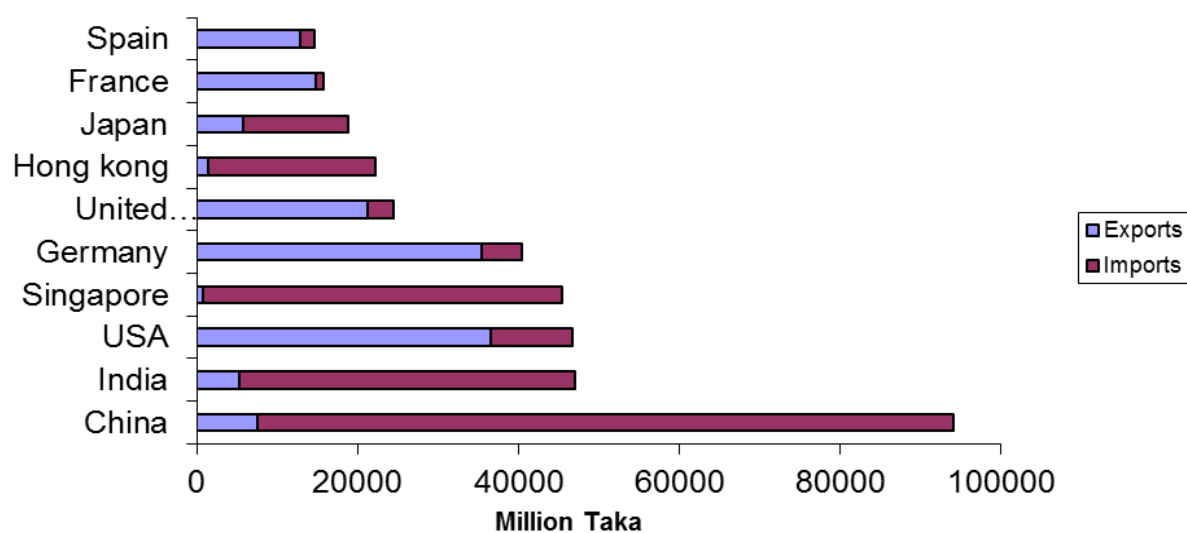


Table 14. Top trading partners – exports (goods), November -2016

(In million taka)

Country	Export	Rank	Percent of Total Export
USA	36546	1	16.17
Germany	35391	2	15.66
United Kingdom	21322	3	9.43
France	14788	4	6.54
Spain	12899	5	5.71
Italy	10949	6	4.84
China	7557	7	3.34
Canada	6443	8	2.85
Netherlands	6411	9	2.84
Other Contri	6402	10	2.83

Table 15. Top trading partners – imports (goods), November -2016

(In million taka)

Country	Import	Rank	Percent of Total Import
China	86485	1	22.47
Singapore	44511	2	11.57
India	41795	3	10.86
Hong kong	20797	4	5.40
Indonesia	13763	5	3.58
Japan	13054	6	3.39
Korea REP.	11998	7	3.12
USA	10224	8	2.66
Malaysia	8997	9	2.34
Taiwan	8984	10	2.33

Table 16. Monthly merchandise export (2 digit HS code)

(In million taka)

HS Code	Commodities	2015-16		% change from previous month
		Oct'16	Nov'16	
1	Live animals	0.05	0.07	40
2	Meat and edible meat offal	0.01	0.10	900
3	Fishes, crustacean and other aquatic	4692.24	3871.29	-17.50
4	Dairy produces edible product of animal origin.	1.01	4.83	378.22
5	Products of animal origin	87.24	96.49	10.60
6	Live tree Plant bulbroot etc.	-	1.03	-
7	Edible vegetables, roots as tubers	332.62	1154.92	247.22
8	Edible fruits and nuts citrus fruits	0.55	-	-
9	Coffee, tea, mate and spices	244.89	237.97	-2.83
10	Cereals	20.98	19.89	-5.20
11	Product of milling industry : malt etc.	15.48	12.67	-18.15
12	Oil seeds and oleaginous fruits	82.63	108.27	31.03
13	Lac, gum resin vegetable sap/ extract	0.88	-	-
14	Vegetable plaiting materials	68.99	64.28	-6.83
15	Animal or vegetable fats and oils	418.48	316.85	-24.29
16	Preparations of meat or fish etc.	23.62	12.72	-46.15
17	Sugar and sugar confectionery	149.37	107.34	-28.14
18	Cocoa and cocoa preparations	13.43	13.55	0.89
19	Preparations of cereals, flour, starch etc.	593.34	687.07	15.80
20	Preparations of vegetable fruits, nuts, etc.	596.37	524.25	-12.09
21	Misc. edible preparations	5.29	7.99	51.04
22	Beverages, spirits and vinegar	157.69	145.29	-7.86
23	Residues & waste from the food industry	4.97	12.27	146.88
24	Tobacco mfg tobacco substitutes	848.09	513.97	-39.40
25	Salt, sulphr etc. & plastering metals stone cement	55.52	53.81	-3.08
26	Ores, slag and ash	4.28	23.66	452.80
27	Mineral, fuels/oils etc.	739.85	3380.31	356.89
28	Inorganic chem. comp of specious metals etc.	148.94	74.22	-50.17
29	Organic chemicals	9.14	48.29	428.34
30	Pharmaceutical products	568.73	593.70	4.39
31	Fertilizers	-	-	-
32	Tanning/dyeing ext; dye pigments etc.	1.39	4.03	189.93
33	Essential oils, perfumery/toilet pre.	5.17	5.18	0.19

Table 16. Monthly merchandise export (2 digit HS code)

(in million taka)

HS Code	Commodities	2015-16		% change from previous month
		Oct'16	Nov'16	
34	Soap, organic Surface-active agents etc.	5.62	4.51	-19.75
35	Albuminoidal substitute starches, glues etc.	17.83	9.97	-44.08
36	Explosive pyrotechnic products	-	-	-
37	Photographic/cinematographic goods	-	-	-
38	Miscellaneous chem. products	51.26	63.51	23.90
39	Plastics and articles thereof	2136.8	665.42	-68.86
40	Rubber and articles thereof	116.22	165.50	42.40
41	Raw hides & skins, leather	1836.11	1913.29	4.20
42	Articles of Leather/Animal Gut	4160.96	3101.35	-25.47
43	Fur skins & artificial fur. Mfg.	-	-	-
44	Wood & art. of wood; wood charcoal	31.36	50.79	61.96
45	Cork and articles of cork	-	-	-
46	Manufactures of straw etc.	106.61	110.93	4.05
47	Pulp/ wood/fibrous cellulose materials etc.	-	-	-
48	Paper & paper board; art. P. pulp etc.	707.38	288.22	-59.26
49	Printed books, news papers, pictures etc.	7.84	3.86	-50.77
50	Silk	-	0.40	-
51	Wool, fine/coarse animal hair etc.	2.67	2.94	10.11
52	Cotton	629.91	804.83	27.77
53	Other vegetable, Textile fibres, paper/yarn etc	5752.23	5884.11	2.29
54	Man-made filaments	200.05	331.46	65.69
55	Man-made staple fibres	117.54	150.56	28.09
56	Wadding felts nonwovens, special yarn etc.	268.67	284.19	5.78
57	Carpet other text. floor coverings	87.41	106.33	21.65
58	Special woven fabrics, tufted tex.fabrics etc.	291.38	394.98	35.55
59	Impregnated, coated, textile fabrics etc.	102.87	122.40	18.99
60	Knitted or crocheted fabrics	238.72	259.81	8.83
61	Article of appl. clothing accesso. knit / crocht.	88928.04	86220.11	-3.05
62	Article of appl. clothing accesso. knit/	80061.03	95210.12	18.92
63	Other made up textile articles etc.	6162.12	6058.60	-1.68
64	Footwear, gaiter & like etc.	4471.47	4683.52	4.74
65	Headgear and parts thereof	1301.83	1323.60	1.67

Table 16. Monthly merchandise export (2 digit HS code)

(In million taka)

HS Code	Commodities	2015-16		% change from previous month
		Oct'16	Nov'16	
66	Umbrellas, sun umbrellas, walk sticks etc.	-	-	-
67	Prepared feathers & down/articles etc.	86.72	99.99	15.30
68	Art of stone, plastic, cement etc.	-	-	-
69	Ceramic products	281.84	270.29	-4.10
70	Glass and glassware	14.22	8.78	-38.26
71	Natural/culture pearls precious stones etc.	20.33	78.22	284.75
72	Iron or steel	100.59	103.30	2.69
73	Articles of iron or steel	80.85	164.33	103.25
74	Copper and articles thereof	160.31	152.47	-4.89
75	Nickel and articles thereof	-	-	-
76	Aluminum and article thereof	13.36	7.76	-41.92
78	Lead and articles thereof	73.32	255.46	248.42
79	Zinc and articles thereof	23.11	13.08	-43.40
80	Tin and articles thereof	-	-	-
81	Other base metals, cermets etc.	-	2.34	-
82	Tools, cutlery Spon base Metl Part	64.25	25.15	-60.86
83	Miscellaneous art of base metal.	3.74	2.37	-36.63
84	Nuclear reactors, boilers etc.	963.15	1564.36	62.42
85	Electrical mach. & equipment, parts etc.	464.43	528.33	13.76
86	Rail/tramway locomotives etc.	2.06	4.56	121.36
87	Vehicles, other than rail/tram way's & parts etc.	473.56	312.38	-34.04
88	Aircraft, space craft and parts.	0.48	741.58	154395.83
89	Ships, boats & floating structures	0.95	422.46	44369.47
90	Optical,photo,cinematgph.Medical inst.etc.	533.84	513.28	-3.85
91	Clocks & watches & parts	3.13	8.05	157.19
92	Musical /instruments and parts etc.	0.01	-	-
93	Arms, & ammunition and parts & accessories	-	45.89	-
94	Furniture, bedding, mattresses etc.	369.75	150.75	-59.23
95	Toys, games & sports requisites & parts	144.69	139.50	-3.59
96	Miscellaneous mfg. articles	115.69	123.33	6.60
97	Works/ art, collectors & antiques	-	-	-
98	Goods Commodities NEC	9.55	2.50	-73.82
Total		211689.1	226052	6.78

Table 17. Monthly export of major commodities (4 digits)

(In million taka)

HS Code	Commodities	2015-16		% change from previous month
		Oct'16	Nov'16	
303	Fish frozen	222.28	295.87	33.11
304	Fish fillet, other fish meal	3.13	0.11	-96.49
305	Fish dried	29.17	46.62	59.82
306	Shrimps & prawns frozen	4356.67	3395.17	-22.07
307	Molluscs	0.94	5.91	528.72
506	Bone and horn- cores	5.81	38.40	560.93
709	Vegetable fresh, chilled other	39.61	42.09	6.26
902	Tea	22.24	7.09	-68.12
1006	Rice	20.91	19.89	-4.88
2401	Un-manufactured tobacco	818.45	470.43	-42.52
2710	Petro oil/oil bitum minrl, nec	739.29	3380.28	357.23
3003-004	Pharmaceutical product	541.09	589.99	9.04
3901-926	Plastic & articles thereof	2136.71	665.42	-68.86
4102	Raw hides & skin of sheep's or lambs	-	-	-
4103	Raw hides and skin other	4.11	3.60	-12.41
4104	Leather Bovine/Equin W/Out hair	751.55	976.76	29.97
4105	Tanned or crust skins of sheep or lambs	-	-	-
4106	Tanned or crust hides and skins or other animals	60.93	79.74	30.87
4107	Leather hole hides and skins or crusting	213.03	346.54	62.67
4113	Leather further prepared after tanning or crusting including parchment-dressed leather of other animals	804.11	506.55	-37.00
4202	Trunks, suit-case, vanity-cases, brief cases, and other	1716.99	1439.30	-16.17
4602	Basket work, wicker work, and other articles	92.16	103.32	12.11
5303	Jute and other textile bast fibres, raw or retted	1454.59	1456.24	0.11
5307	Jute yarn	3989.93	4178.72	4.73
5310	Woven fabrics and jutes or of other textile bast fibres	293.15	241.47	-17.63
5607	Jute twine, cordage, roofs and cables	215.99	210.07	-2.74
6101-117	Readymade garments men's women's and girls knitted and crocheted	88928.06	86220.11	-3.05
6201-217	Readymade garments men's women's and girls not knitted and crocheted	80061.01	95210.11	18.92
6305	Sacks and bags, of a kind used for the packing of goods	1811.51	1649.03	-8.97
6401-6406	Foot ware with outer soles and uppers of rubber or of plastics and other	4471.46	5068.02	13.34
6505	Heads and other headgear, knitted or crocheted	1295.94	1309.51	1.05
Total		195100.8	207956.36	6.59

Table 18. Monthly merchandise import (2 digit HS code)

(In million taka)

H S Code	Commodities	2015-16		% change From previous month
		Oct'16	Nov'16	
1	Live animals	120.3	105.97	-11.91
2	Meat and edible meat offal	1.47	4.12	180.27
3	Fishes, crustacean and other aquatic	240.75	402.05	67.00
4	Dairy produces edible product of animal origin.	1218.05	2200.01	80.62
5	Products of animal origin	181.28	120.04	-33.78
6	Live tree and other plants etc.	6.8	5.72	-15.88
7	Edible vegetables, roots as tubers	6976.1	6125.79	-12.19
8	Edible fruits and nuts citrus fruits	2478.8	2691.05	8.56
9	Coffee, tea, mate and spices	1958.2	2064.25	5.42
10	Cereals	19004.24	9827.41	-48.29
11	Product of milling industry: malt etc.	290.36	369.50	27.26
12	Oil seeds and oleaginous fruits	1083.33	5009.70	362.44
13	Lac, gums, resins , vegetable saps & extra	65.82	99.09	50.55
14	Vegetable plaiting materials	50.02	80.13	60.20
15	Animal or vegetable fats and oils	23803.82	18730.17	-21.31
16	Preparations of meat or fish etc.	5.09	10.12	98.82
17	Sugar and sugar confectionery	3753.5	5435.11	44.80
18	Cocoa and cocoa preparation	82.42	91.68	11.24
19	Preparations of cereals, flour, starch etc.	524.36	618.99	18.05
20	Preparations of vegetable, fruits, nuts, etc.	36.73	78.95	114.95
21	Misc. edible preparations	401.88	459.60	14.36
22	Beverages, spirits and vinegar	106.48	83.57	-21.52
23	Residues & waste from the food industries	4637.22	4378.68	-5.58
24	Tobacco mfg tobacco substitutes	3.86	107.46	2683.94
25	Salt, sulphur, etc. and plastering metals stone cement	6605.05	8892.65	34.63
26	Ores, slag and ash	448.71	1098.15	144.73
27	Mineral, fuels/oils etc.	41139.01	49769.83	20.98
28	Inorganic. Chem.: compounds of specious metals etc.	2656.86	2244.74	-15.51
29	Organic Chemicals	4842.91	5434.39	12.21
30	Pharmaceutical products	2167.01	1713.75	-20.92
31	Fertilizers	6618.18	8625.10	30.32
32	Tanning/dyeing ext; dye pigments etc.	4196.35	4052.69	-3.42
33	Essential Oils, perfumery/toilet pre.	654.91	814.88	24.43
34	Soap, organic surface-active agents etc.	1087.95	1077.84	-0.93

Table 18. Monthly merchandise import (2 digit HS code)

(In million taka)

H S Code	Commodities	2015-16		% change from previous month
		Oct'16	Nov'16	
35	Albuminoidal substitute starches, glues e	625.46	619.94	-0.88
36	Explosives pyrotechnic products etc.	1.4	0.72	-48.57
37	Photographic/cinematographic goods	314.44	116.16	-63.06
38	Miscellaneous chem. products	3818.25	4334.65	13.52
39	Plastics and articles thereof	12076.55	13921.40	15.28
40	Rubber and articles thereof	2256.1	2654.58	17.66
41	Raw hides & skins, leather	1396.03	1282.21	-8.15
42	Articles of Leather/Animal gut	312.61	346.36	10.80
43	Fur skins & artificial fur. Mfg.	4.23	7.73	82.74
44	Wood & art. of wood; wood charcoal	1146.19	821.01	-28.37
45	Cork and articles of cork	1.86	0.72	-61.29
46	Manufactures of straw etc.	3.31	1.63	-50.76
47	Pulp/ wood/fibrous cellulosic materials etc.	1212.95	1369.88	12.94
48	Paper & paper board; art. Paper pulps etc.	4192.63	5277.06	25.87
49	Printed Book, News paper & picture	314.63	261.54	-16.87
50	Silk	20.33	13.20	-35.07
51	Wool, fine/coarse animal hair etc.	69.94	98.99	41.54
52	Cotton	46152.97	47284.65	2.45
53	Other vegetabe, textile fibres, paper/yarn etc.	358.15	752.72	110.17
54	Man-made filaments	8377.19	8884.62	6.06
55	Man-made staple fibres	10524.42	11254.61	6.94
56	Wadding felts non-wovens, special yarn etc.	372.6	448.35	20.33
57	Carpet other text. floor coverings	32.21	56.45	75.26
58	Special woven fabrics, tufted textile fabrics etc.	1200.08	1313.25	9.43
59	Impregnated, coated, textile fabrics etc.	1154.34	1205.44	4.43
60	Knitted or crocheted fabrics	4595.94	4937.82	7.44
61	Article of apparl. clothing accessor. knit /crocht.	142.26	175.10	23.08
62	Articl of apparl.clothing accessor.n-knit/ crocht.	5669.03	5748.18	1.40
63	Other made up textile articles etc.	536.79	693.06	29.11
64	Footwear, gaiter & like etc.	1177.45	1408.38	19.61
65	Headgear and parts thereof	25.02	27.09	8.27
66	Umbrellas, sun umbrellas, walk sticks etc.	1.95	11.57	493.33

Table18. Monthly merchandise import (2 digit HS code)

(In million taka)

H S Code	Commodities	2015-16		% change from previous month
		Oct'16	Nov'16	
67	Prepared feather & down articles	24.32	43.11	77.26
68	Art of stone, plastic, cement etc.	384.76	350.61	-8.88
69	Ceramic products	1131.02	980.98	-13.27
70	Glass and glassware	572.83	604.39	5.51
71	Natural/culture pearls & precious stones	70.98	54.89	-22.67
72	Iron or steel	15076.57	17179.66	13.95
73	Articles of iron or steel	5314.02	4775.52	-10.13
74	Copper and articles thereof	1217.22	1572.31	29.17
75	Nickel and articles thereof	50.65	9.89	-80.47
76	Aluminum and article thereof	1932.07	2113.44	9.39
78	Lead and articles thereof	375.71	190.08	-49.41
79	Zinc and articles thereof	1232.27	1161.21	-5.77
80	Tin and articles thereof	40.95	7.49	-81.71
81	Other base metals, cermets etc.	34.12	20.03	-41.30
82	Tools, implements, cutlery etc.	297.49	319.01	7.23
83	Miscellaneous art of base metal.	619.4	692.01	11.72
84	Nuclear reactors, boilers etc.	38703.86	41580.61	7.43
85	Electrical mach. & equipment, parts etc.	20066.45	22635.39	12.80
86	Rail/tramway locomotives etc.	1171.3	41.01	-96.50
87	Vehicles, other than rail/tram way's & parts etc.	14042.26	11941.21	-14.96
88	Aircraft, space craft and parts.	6702.83	3092.42	-53.86
89	Ships, boats & floating structures	8122.99	7182.02	-11.58
90	Optical, Photograph, Cinematograph,Medical Inst.	4267.2	3666.57	-14.08
91	Clocks & watches & parts.	46.63	61.71	32.34
92	Musical /instruments and parts etc.	5.77	3.61	-37.44
93	Arms, & ammunition and parts & accessories	1352.18	2993.70	121.40
94	Furniture, bedding, mattresses etc.	938.29	952.43	1.51
95	Toys, games & sports requisites & parts etc.	252.85	377.48	49.29
96	Miscellaneous mfg. articles	2039.7	2074.13	1.69
97	Works/ art, collectors & antiques	0.85	25.55	2905.88
98	Goods commodities nec	3.33	3.92	17.72
Total		371626	384858.64	3.56

Table 19. Monthly import of major commodities (4 digits)

(In million taka)

H S Code	Commodities	2015-16		% change From previous month
		Oct'16	Nov'16	
401	Milk & cream	1.12	3.62	223.21
703	Onion & Garlic	1919.39	1850.43	-3.59
713	Dried leguminous vegetable	4514.69	3475.28	-23.02
804	Dates	153.99	86.36	-43.92
806	Grapes	248.26	162.90	-34.38
808	Apples	1220.12	1358.17	11.31
904	Pepper	424.19	438.01	3.26
1001	wheat	13138.30	7393.71	-43.72
1006	Rice	310.21	216.83	-30.10
1108	Starches	266.44	333.81	25.29
1201-1212	Oil seeds	1083.34	5009.70	362.43
1507	Soya bean oil	9417.07	9370.44	-0.50
1511	Palm Oil	13954.75	9054.96	-35.11
1701	Sugar	3689.71	5314.11	44.03
2401	Un-manufactured tobacco	-	74.07	-
2523	Cement	4118.16	5580.56	35.51
2710	Petroleum product	36378.19	41939.01	15.29
2801-2851	In organic Chemicals	2649.75	2243.99	-15.31
2901-2942	Organic Chemicals	4788.85	5434.40	13.48
3101-3105	Fertilizers	6618.18	8625.10	30.32
3201-3215	Tanning & dyeing	4196.36	4052.72	-3.42
3801-3825	Chemical product	3818.23	4334.65	13.53
3901-3926	Plastic & articles thereof	12076.52	13921.42	15.28
4801-4823	Paper & paper board	4192.65	5177.06	23.48
5201-5203	Raw cotton	12716.34	11478.70	-9.73
5205-5207	Cotton yarn	6671.35	6089.17	-8.73
5208-5212	Cotton fabric	26712.26	29678.44	11.10
5402-5406	Synthetic yarn	2772.93	2666.76	-3.83
5407-5408	Synthetic fabric	4598.35	5189.36	12.85
5504-5507	Staple fibre	779.60	720.46	-7.59
5509-5511	Yarn of staple fibre	2185.05	1976.90	-9.53
5512-5516	Fabric of staple fibre	5427.81	6656.49	22.64
7201-7229	Iron & steel	15076.56	17179.66	13.95
7301-7326	Article of iron & steel	5314.01	4775.64	-10.13
7601-7616	Aluminum & article thereof	1932.01	2113.35	9.39
8402-8485	Machinery & parts	38654.80	41478.03	7.30
8501-8548	Electrical goods	20066.47	22631.38	12.78
8607-8609	Rail, tramway, locomotive	168.08	41.00	-75.61
8701-8716	Vehicle	14042.24	11941.19	-14.96
8902,8903,8908	Ships, boat, floating structure	5250.13	4046.34	-22.93
9001-9033	Optical, Photo, Cinema etc.	4267.19	3526.22	-17.36
Total		295814	307640.4	4.00

Table 20. Re-exports Value, November -2016 by 2 digit HS Code.

HS CODE	HS DESCRIPTIONS	(In million taka)
	Total: Re-exports	4867.51
27	Mineral, fuels/oils and waxes	3261.45
29	Organic Chemicals	0.57
38	Miscellaneous Chemical product	0.64
40	Rubber & articles thereof	0.59
41	Raw hides & skins of bovine	2.12
52	Cotton	1.71
53	vege textile fibr otr paper/yarn	3.30
60	Knitted or crocheted fabrics	2.96
62	Articl of apparl.cloth accessor.n-knit	10.94
63	Otr made up text artcle set rag	7.78
73	Articles of iron & steel	80.76
82	Tool cut spon base metl & parts	1.99
83	Miscellaneous art of base metl	0.07
84	Nuclear rect boil mach & parts	1221.08
85	Electrcl machinery eqipmnt part	252.06
86	Rail/tramway locomotive parts	0.19
87	Vechicle otr rail/tram rol-stoc	0.19
90	Optical , photo, cinma surgi apt	19.09

Table 21. Re-Import Value, November -2016 by 2 digit HS Code.

HS CODE	HS DESCRIPTIONS	(In million taka)
	Total: Re-Import	9.34
85	Electrcl machinery eqipmnt part	9.34

Table 22 . Temporary export Value, November -2016 by 2 digit HS Code

HS CODE	HS DESCRIPTIONS	(In million taka)
	Total : Temporary- Exports	962.39
30	Pharmaceutical products	0.63
41	Raw hides & skins of bovine	0.00
73	Articles of iron and steel	1.78
84	Nuclear rect boil mach & parts	151.86
85	Electrcl machinry eqipmnt part	12.93
88	Aircraft,spacecraft part	741.58
90	Optical, photo, cinema surgi apt	7.72
93	Arms, & ammunition and parts & accessories	45.89

Table 23 . Temporary Import Value, November -2016 by 2 digit HS Code

HS CODE	HS DESCRIPTIONS	(In million taka)
	Total : Temporary- Import	25.13
03	Fish & crustacean otr aquatic	6.44
27	Mineral, fuels/oils and waxes	0
40	Rubber & articles thereof	0
73	Articles of iron and steel	1.01
84	Nuclear rect boil mach & parts	16.65
85	Electrcl machinry eqipmnt part	0.93