

***Monthly Release of
Foreign Trade Statistics (FTS)
September'17***

Bangladesh Bureau of Statistics (BBS) of Statistics and Informatics Division (SID) compiles and publishes Foreign Trade Statistics (FTS) on a regular basis. This publication presents monthly trend of Bangladesh foreign trade statistics including statistics on top trading partners, essential import commodities, and last twelve months scenario of major export and import goods for September, 2017.

Merchandise trade data of this publication are provided by National Board of Revenue (NBR) and while data on services from Bangladesh Bank. Data presented in this publication are provisional and subject to revision. All these provisional data will be subsequently reviewed and revised. Revised data are being presented in next issues.

In September, 2017 total export and import of goods and services is recorded at decreased by Tk. 193.36 and decreased by Tk. 430.41 billion respectively resulting in a trade deficit at goods and services of Tk. 237.05 billion. The growth of export and import in September, 2017 decreased by 40.51 and decreased by 11.89 percent respectively comparing to August, 2017 and it is decreased by 3.88 and decreased by 0.58 percent respectively comparing to September, 2016.

For the three months ending in September, 2017 the moving average of export of goods and services was Tk. 170.96 billion, while the moving average of import of goods and services was Tk. 273.85 billion resulting in an average trade deficit of Tk. 102.89 billion. For the three months ending in August, 2017 the average trade deficit was Tk. 56.77 billion, reflecting average exports of Tk. 199.52 billion and average imports of Tk. 256.29 billion.

Indicators of this publication are expected to provide a good idea about the trend of export and import of the country over the previous months of a year. This monthly release would be a useful document for planners, policy makers, researchers, development partners/agencies, academicians and other stakeholders.

Table 1: Export, import and trade deficits

(In billion taka)

Period	Export			Import			Trade balance		
	Total	Goods	Services	Total	Goods	Services	Total	Goods	Services
2015-16	2898.06	2634.98	271.56	4357.7	3869.35	488.35	-11869.5	-1234.67	-224.97
2016-17	2762.33	2751.58	287.95	4440.16	4382.68	57.48	-2061.71	-1628.1	-964.73
2017-18									
Oct-16	235.52	211.69	23.83	410.83	371.63	39.20	-175.31	-159.94	-15.37
Nov-16	247.71	226.05	21.66	439.91	384.86	55.05	-192.2	-158.81	-33.39
Dec-16	275.6	243.57	32.03	420.26	366.19	54.07	-144.66	-122.62	-22.04
Jan-17	282.86	259.40	23.46	435.96	392.90	43.06	-153.10	-133.50	-19.6
Feb-17	238.23	217.44	20.79	384.38	347.00	37.38	-146.15	-129.56	-16.59
Mar-17	275.18	246.34	28.84	447.75	398.12	49.63	-172.57	-151.78	-20.79
Apr-17	245.35	220.32	25.03	435.47	388.37	47.10	-190.12	-168.05	-22.07
May-17	265.39	245.02	20.37	460.07	409.62	50.45	-194.68	-161.6	-30.08
Jun-17	279.02	252.26	26.76	377.73	329.78	47.95	-98.71	-77.52	-21.19
July-17	-5.48	260.07	-265.55	-97.36	399.22	-496.58	-102.84	-139.15	-762.13
Aug-17	325.01	298.06	26.95	488.49	432.56	55.93	-163.48	-134.5	-28.98
Sep-17	193.36	165.33	28.03	430.41	382.42	47.99	-237.05	-217.09	-22.96

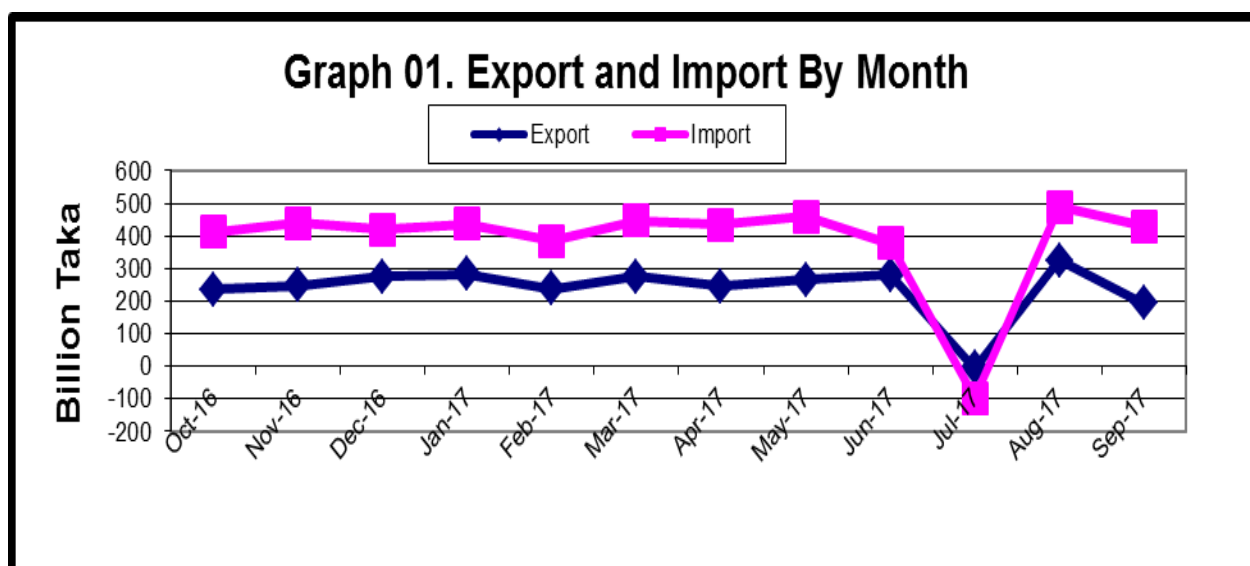


Table 2: Export, import and trade deficits

(In million US \$)

Period	Export			Import			Trade balance		
	Total	Goods	Service	Total	Goods	Service	Total	Goods	Service
2015-16	33744	33480	264	49668	49182	486	-15924	-15702	-222
2016-17	34819	34731	11	55382	55325	57	-20643	-20597	-964
2017-18									
Oct-16	2724	2700	24	4779	4740	39	-2055	-2040	-15
Nov-16	2893	2871	22	4942	4887	55	-2049	-2016	-33
Dec-16	3127	3095	32	4707	4653	54	-1580	-1558	-22
Jan-17	3387	3284	23	5016	4973	43	-1709	-1689	-20
Feb-17	2761	2740	21	4409	4372	37	-1648	-1632	-16
Mar-17	3121	3092	29	5047	4997	50	-1926	-1905	-21
Apr-17	2771	2746	25	4888	4841	47	-2117	-2095	-22
May-17	3075	3055	20	5158	5108	50	-2083	-2053	-30
Jun-17	3157	3130	27	4140	4092	48	-983	-962	-21
July-17	2959	3225	-266	4454	4951	-497	-1495	-1726	-763
Aug-17	3720	3693	27	5416	5360	56	-1696	-1667	-29
Sep-17	2074	2046	28	4781	4733	48	-2707	-2687	-20

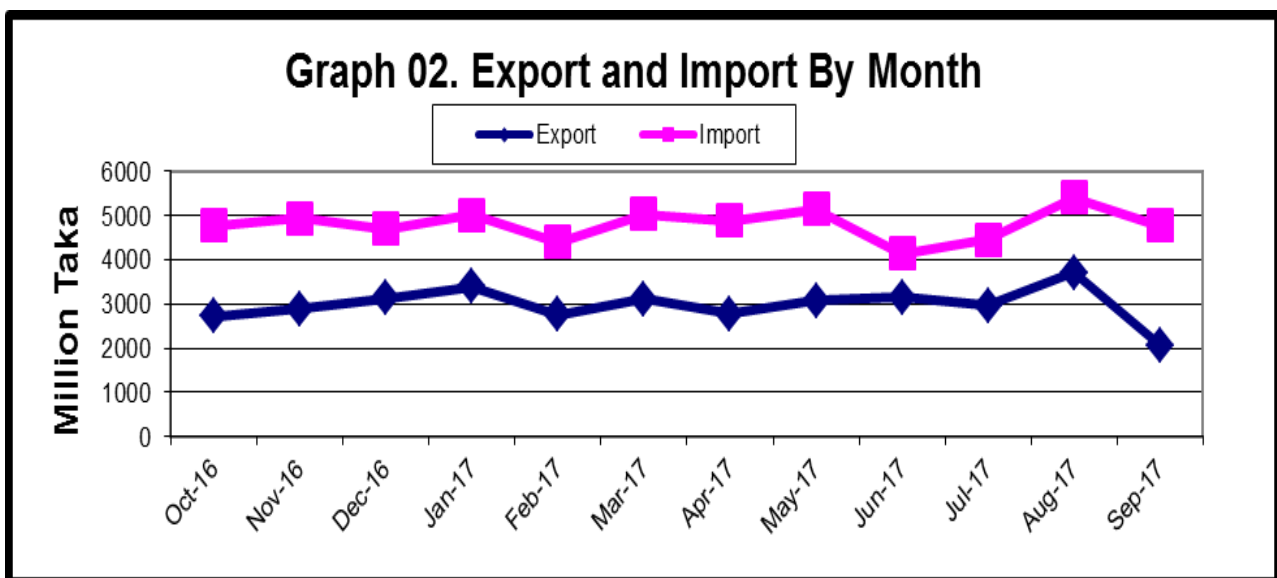


Table 3. Percent change from the previous month (goods)

(In million taka)

Items	2016-17		
	Aug'17	Sep'17	Percent change from the previous month
1. Export (Commodities)	298062	165331	-44.53
1. Readymade Garments	245559	130728	-46.76
2. Shrimps and prawn	4986	3188	-36.06
3. Vegetable textiles fiber/ yarn	6503	5751	-11.56
4. Made-up textiles articles	7042	5045	-28.36
5. Raw hides, skins & leathers	1614	1088	-32.59
6. Raw jute	957	1103	15.26
7. Footwear Special woven fabrics	7536	4156	-44.85
8. Fertilizer	-	-	
9. Hats and other head gear	1575	869	-44.83
10. Special woven fabrics	405	226	-44.20
11. Others	21885	13177	-39.79
2. Import (Commodities)	432558	382424	-11.59
1. Machinery & parts	54942	39676	-27.79
2. Petroleum product and oil	39439	40078	1.62
3. Electric Machinery	24563	20616	-16.07
4. Soya bean and Palm oil	21164	24504	15.78
5. Raw cotton	26793	17143	-36.02
6. Textile fabrics	478	512	7.11
7. Iron and steel	22737	13331	-41.37
8. Plastics and articles	14298	13369	-6.50
9. Wheat	6579	11739	78.43
10. Fertilizer	6573	6876	4.61
11. Others	214992	194580	-9.49
3. Trade balance (1-2)	-134496	-217093	61.41

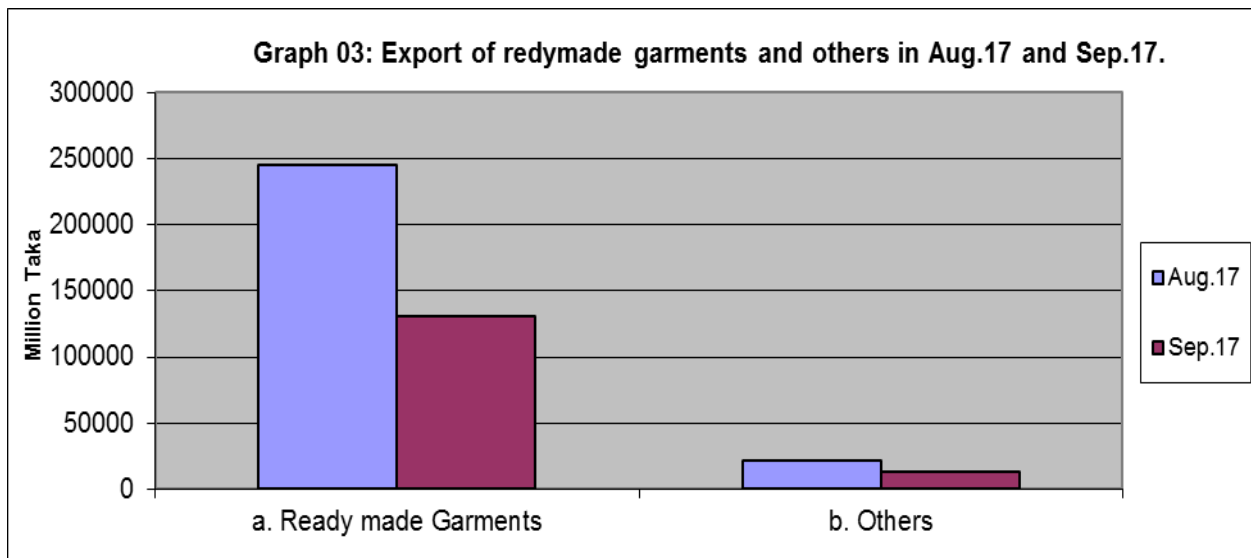


Table 4. Import of Essential Commodities Quantity in M. Ton

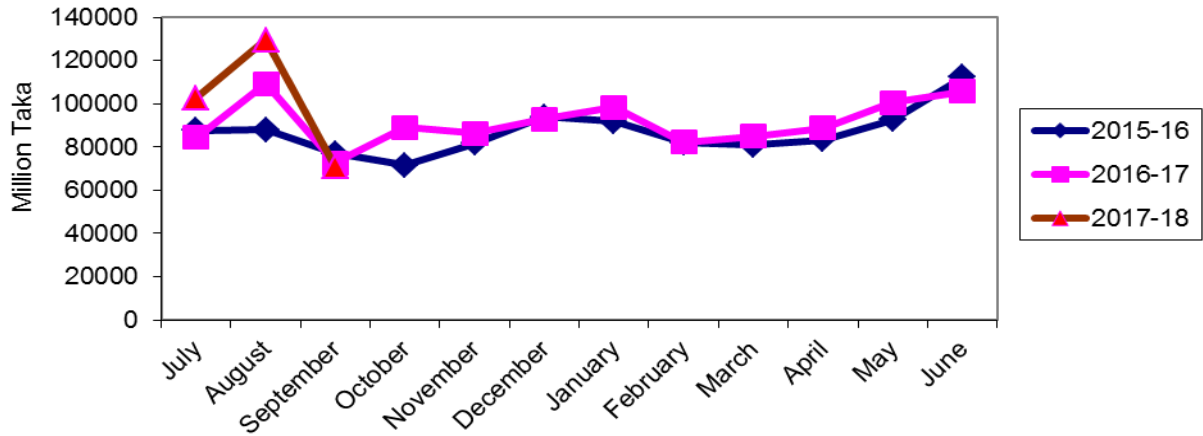
Items	2016-17			
	Aug'17	Sep'17	Percent change from the previous month	Cumulative (Sep -17)
Import (Commodities)				
1. Raw sugar	288908	262087	-9.28	867129
2. Palm oil	254757	320934	25.98	807050
3. Soya bean oil	116112	102354	-11.85	312535
4. Milk & Cream	7262	6393	-11.97	23388
5. Ginger	-	-	-	-
6. Chillies	-	-	-	-
7. Wheat	316196	658125	108.14	1220191
8. Rice	440599	396845	-9.93	1098766
9. Lentil & other	21559	5551	-74.25	62837
10. Onion	98847	99850	1.01	302849
11. Garlic	10118	4070	-59.77	20149
12. Tea	2	93	4550.00	102
13. Oil seed	126397	125106	-1.02	392793
14. Gram/Anchor	-	540	-	-
15. Tarmaric	1201	611	-49.13	3153

Table 5: Twelve months export of readymade garments during 2015-16 to 2017-18

(In million taka)

Month	Ready made Garments (Knitted)			Ready made Garments (Not Knitted)		
	2015-16	2016-17	2017-18	2015-16	2016-17	2017-18
July	87695	84441	102840	84619	81559	98525
August	88007	109411	129534	88567	104325	116025
September	77130	72743	70911	74889	70095	59817
October	71632	88928		68416	80061	
November	81761	86220		90519	95210	
December	94109	93024		116152	110035	
January	91736	98254		114106	114762	
February	81963	82111		104054	97274	
March	80884	85014		100523	97309	
April	83374	88673		88899	87742	
May	92649	100485		99029	99469	
June	112423	105805		123404	105245	

Graph 04: Twelve months exports of readymade garment (knitted) .



Graph 05: Twelve months exports of readymade garment (not knitted)

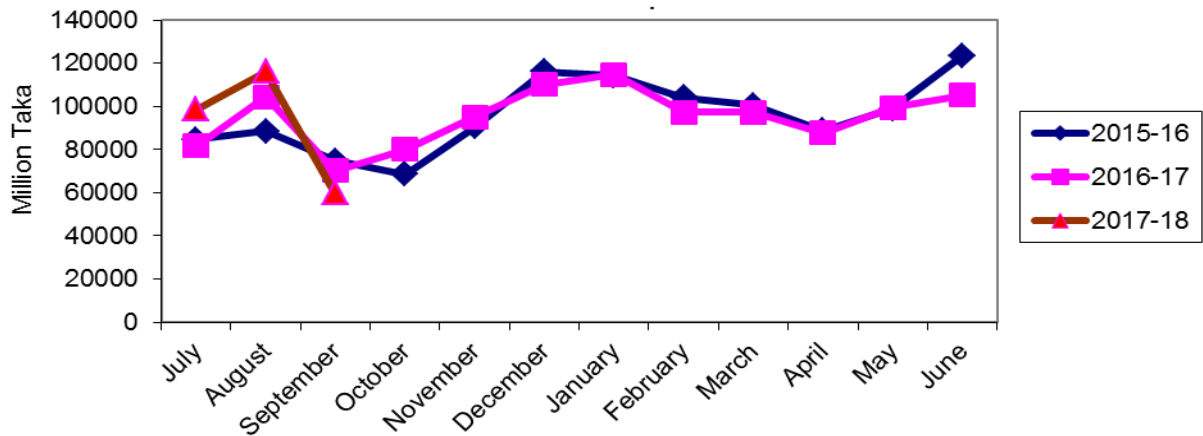


Table 6: Twelve months export of raw hides, skins & leather, 2015-16 to 2017-18

(In million taka)

Month	Raw hides, skins & leather		
	2015-16	2016-17	2017-18
July	1722	1173	1107
August	1914	2269	1614
September	1863	1816	1088
October	1560	1836	
November	-	1913	
December	1747	1601	
January	2342	2327	
February	1980	1501	
March	1885	1392	
April	1351	1035	
May	1747	898	
June	2130	642	

Graph 06: Twelve months exports of raw hides, skins & leather .

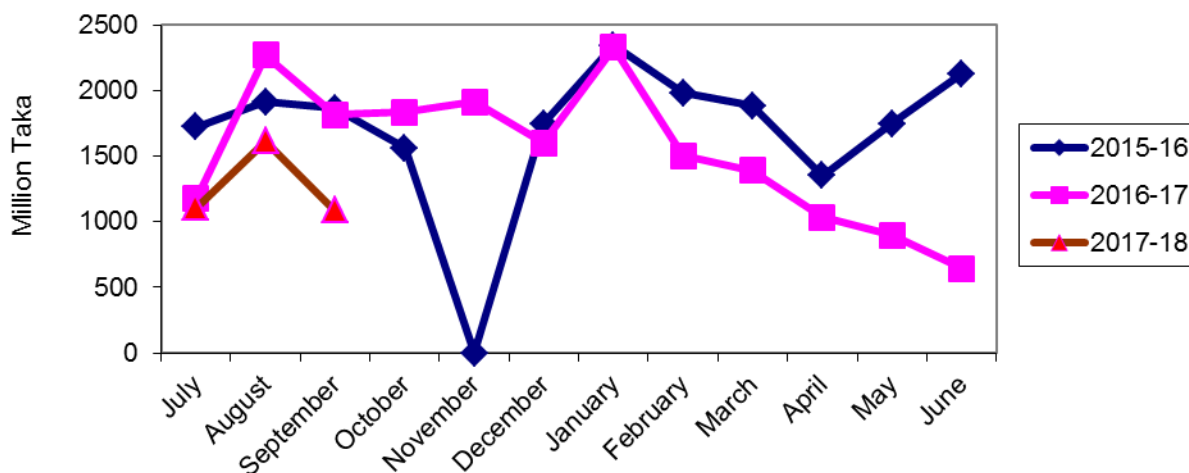


Table 7: Twelve months export of shrimps and prawn, 2015-16 to 2017-18

(In million taka)

Month	Shrimps and prawn		
	2015-16	2016-17	2017-18
July	2807	2818	4498
August	2537	3803	4986
September	3293	3371	3188
October	4186	4357	-
November	-	3395	-
December	3537	2967	-
January	3130	2383	-
February	2733	1855	-
March	2044	1614	-
April	2497	2731	-
May	3086	3400	-
June	3857	4042	-

Graph 07: Twelve months exports of shrimps & prawn .

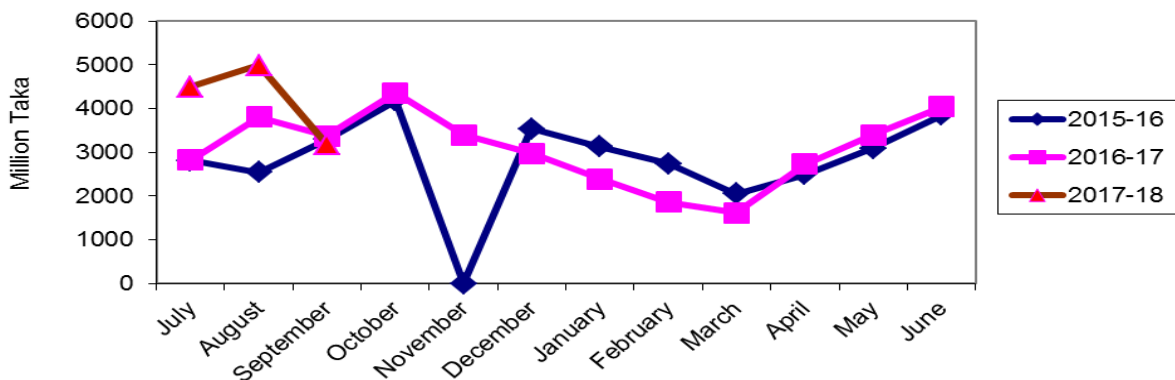
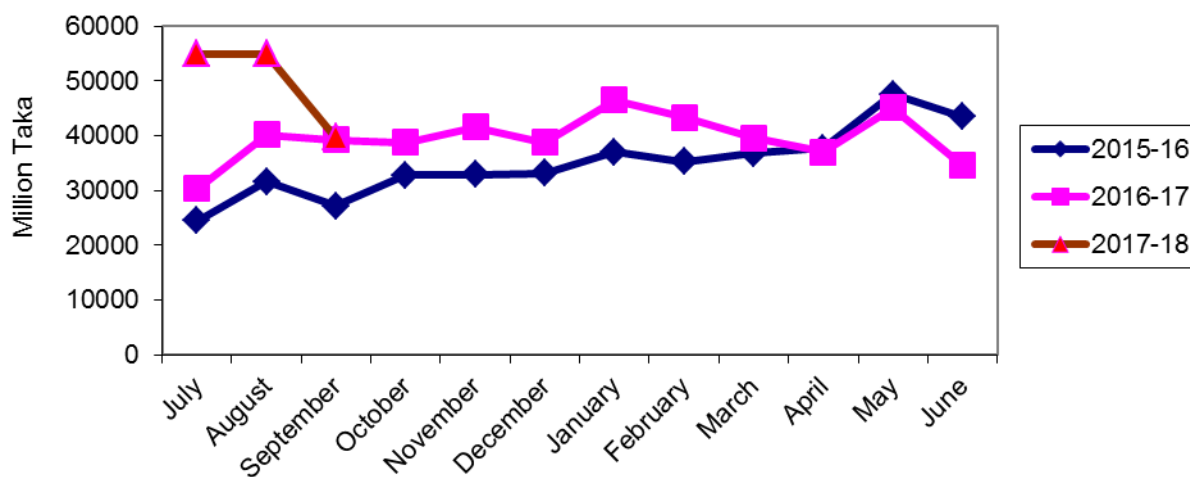


Table 8: Twelve months import of machinery & parts and electrical machinery during 2015-16 to 2017-18.

(In million taka)

Month	Machinery & Parts			Electrical Machinery		
	2015-16	2016-17	2017-18	2015-16	2016-17	2017-18
July	24493	30300	54977	16700	13592	21117
August	31591	40158	54942	18123	19538	24563
September	27158	39180	39676	18939	16764	20616
October	32752	38704		15241	20066	
November	32918	41581		15545	22635	
December	33183	38717		15165	17944	
January	36994	46467		21949	21254	
February	35261	43330		19203	15584	
March	36707	39532		19436	18772	
April	37742	37032		16414	16719	
May	47508	45049		25174	20760	
June	43394	34573		25045	20816	

Graph 08: Twelve months imports of machinery & parts .



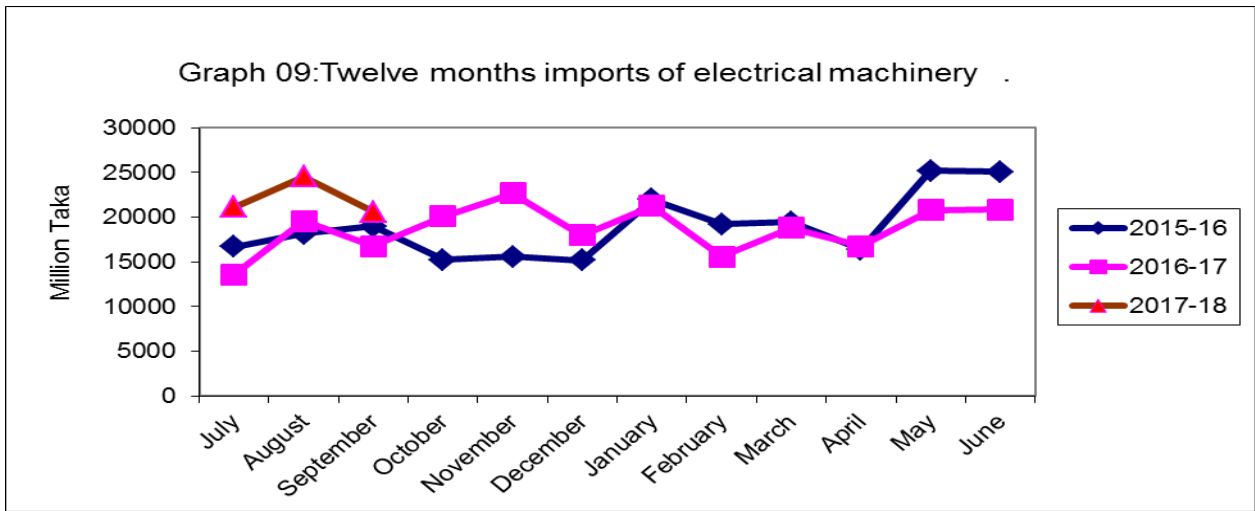
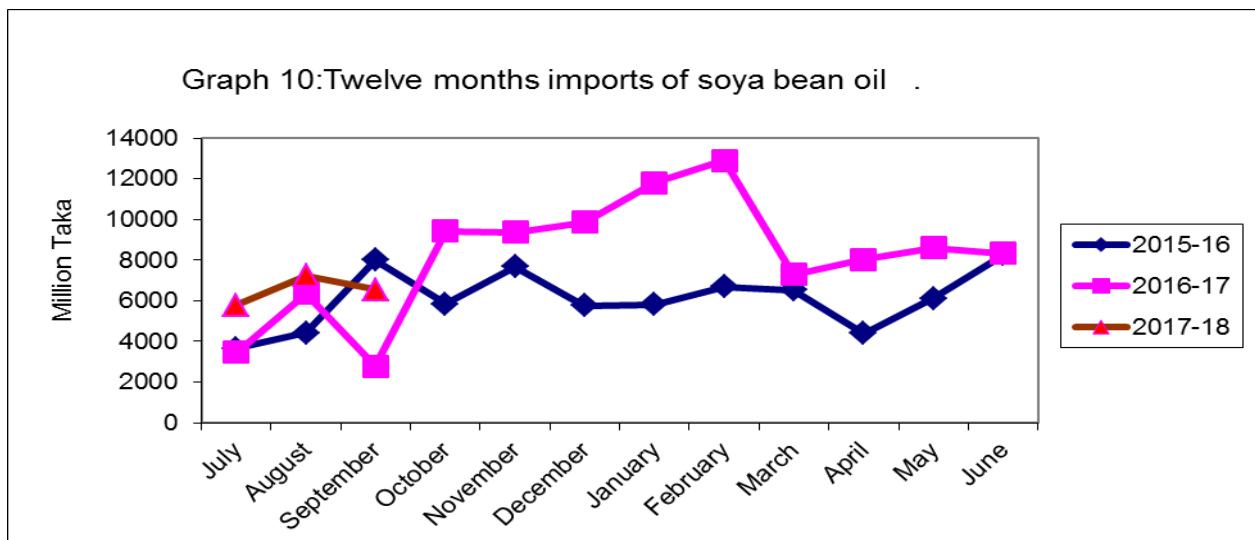


Table 9: Twelve months imports of Soya bean and Palm oil during 2015-16 to 2017-18

(In million taka)

Month	Soya bean			Palm Oil		
	2015-16	2016-17	2017-18	2015-16	2016-17	2017-18
July	3653	3456	5778	6040	5598	13131
August	4408	6371	7226	16473	12532	13938
September	7999	2780	6541	20298	11375	17963
October	5855	9417		11479	13955	
November	7681	9370		8193	9055	
December	5771	9852		8090	9060	
January	5824	11807		10559	14946	
February	6686	12894		11909	10208	
March	6518	7298		11947	13738	
April	4396	8024		14811	16436	
May	6107	8613		16688	16357	
June	8271	8324		14474	16640	



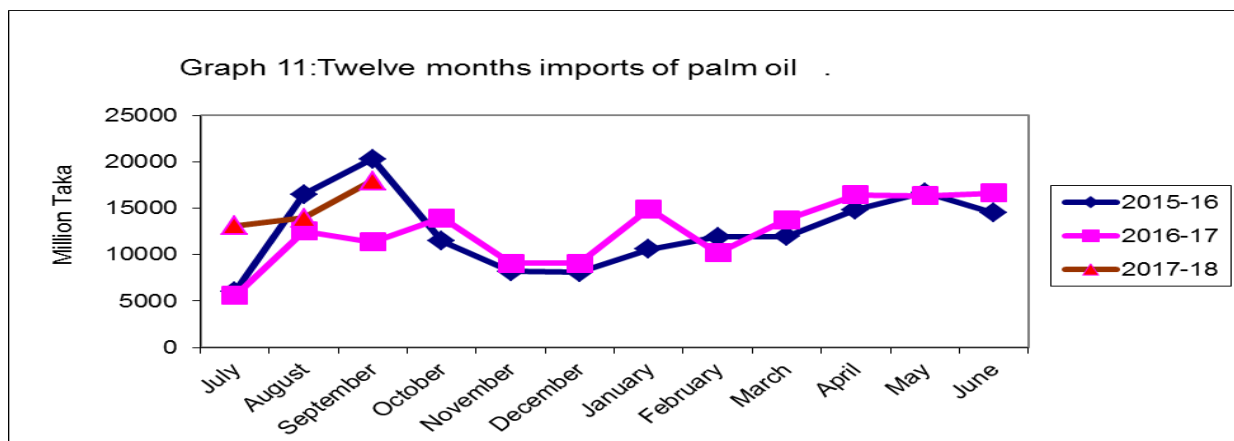
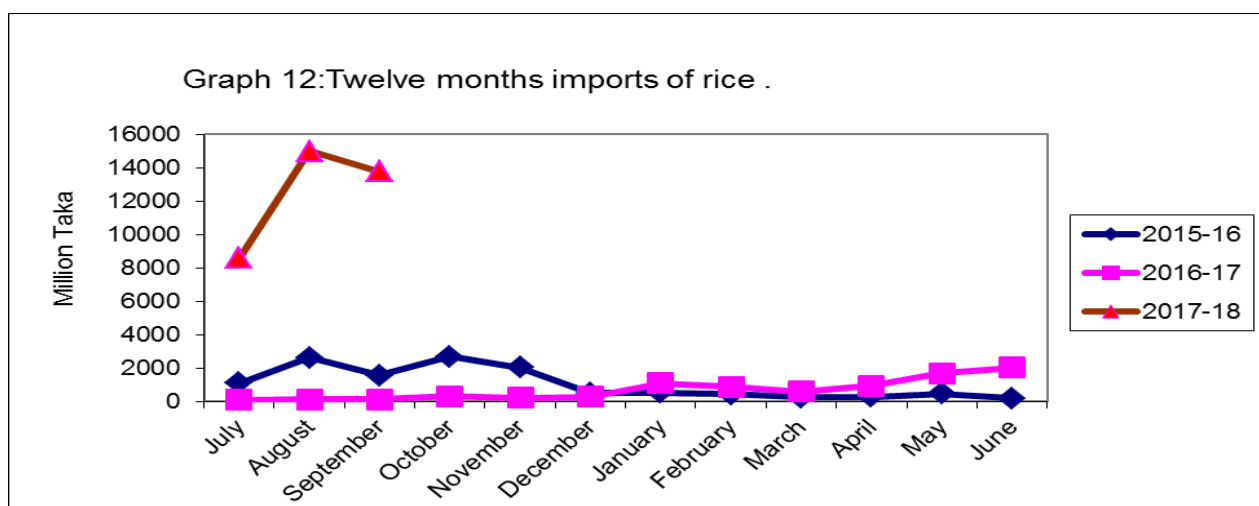


Table 10: Twelve months import of rice and wheat during 2015-16 to 2017-18

(In million taka)

Month	Rice			Wheat		
	2015-16	2016-17	2017-18	2015-16	2016-17	2017-18
July	1064	76	8599	1905	4068	4839
August	2618	96	15008	1199	5193	6579
September	1560	117	13776	6754	11875	11739
October	2671	310		9186	13138	
November	2021	217		6682	7394	
December	479	263		6400	6523	
January	526	1078		9773	6904	
February	428	846		6459	9624	
March	233	590		4853	7217	
April	272	918		5500	5727	
May	450	1671		8503	7477	
June	167	2027		7310	11023	



Graph 13: Twelve months imports of wheat .

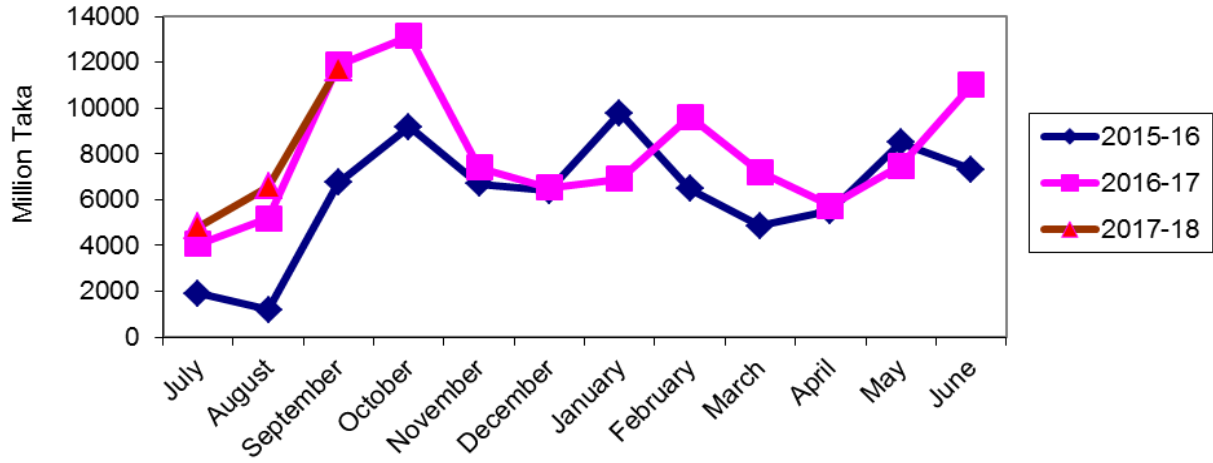
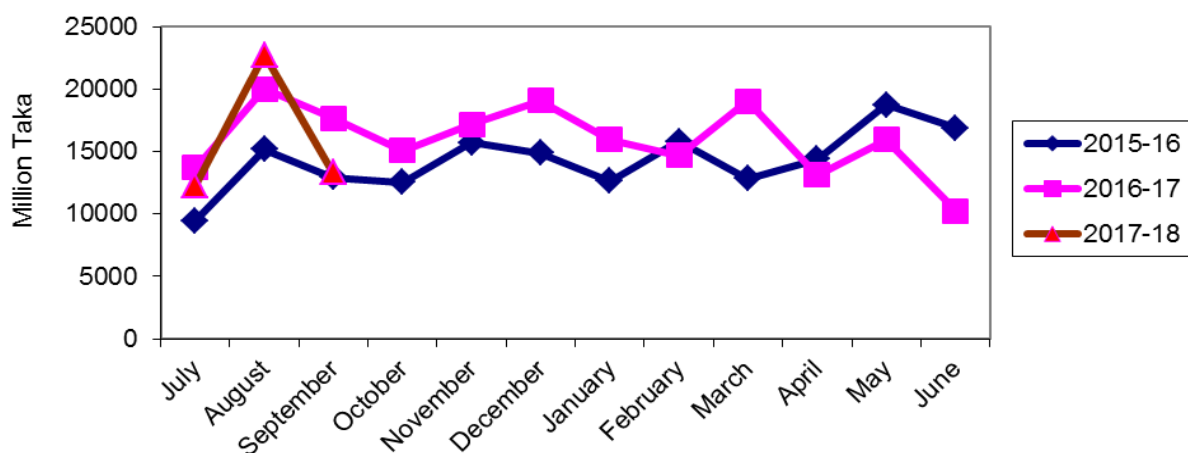


Table 11: Twelve months import of iron & steel and plastics & articles during 2015-16 to 2017-18

(In million taka)

Month	Iron & Steel			Plastics & articles		
	2015-16	2016-17	2017-18	2015-16	2016-17	2017-18
July	9460	13715	12265	10267	9887	14941
August	15195	20027	22737	11898	12990	14298
September	12910	17657	13331	9483	11929	13369
October	12553	15077		11702	12077	
November	15719	17180		12187	13921	
December	14862	19071		12600	12849	
January	12624	15972		10967	15625	
February	15829	14687		11065	13352	
March	12811	19051		12542	14882	
April	14376	13122		11685	15651	
May	18759	15958		12688	17741	
June	16872	10244		12269	10618	

Graph 14: Twelve months imports of iron & steel .



Graph 15: Twelve months imports of plastics & articles .

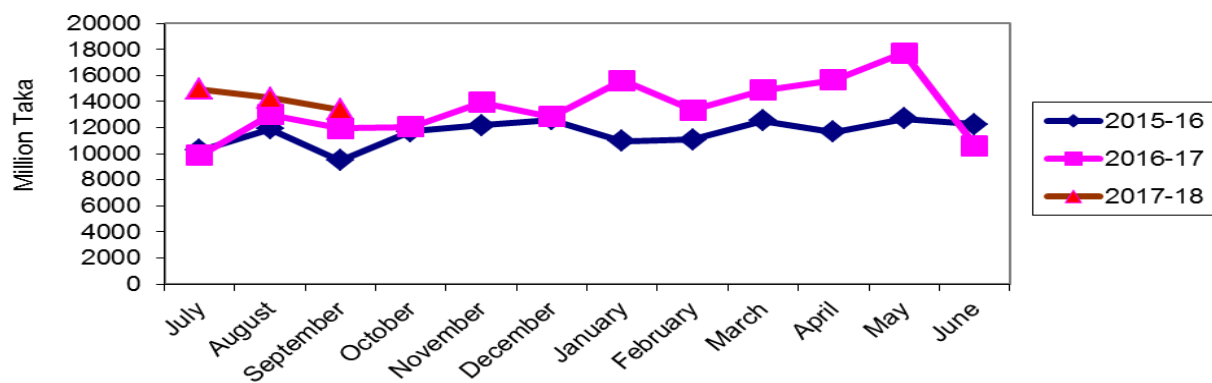


Table 12. Point to point percent change in external trade (goods)

(In million taka)

Items	July- September			September		
	2015-16	2016-17	Change in Percent	2015-16	2016-17	Change in Percent
1. Export(Commodities)	592007	620227	4.77	174589	165330	-5.30
2. Import (Commodities)	931079	992561	6.60	384083	382423	-0.43
3.Trade balance(1-2)	-339072	-372334	9.81	-209494	-217093	3.63

Table13. Top trading partners – total trade (goods), September -2017

(In million taka)					
Country	Exports	Imports	Total	Rank	Percent of Total Trade
China	3270	76082	79352	1	14.49
India	3859	48417	52276	2	9.54
Singapore	725	42264	42989	3	7.85
USA	28552	9264	37816	4	6.90
Germany	26156	4156	30312	5	5.53
UK	20024	2019	22043	6	4.02
Japan	5161	13219	18380	7	3.36
Hong kong	1830	16448	18278	8	3.34
Indonesia	224	16272	16496	9	3.01
Spain	11007	3607	14614	10	2.67

Graph 16: Top trading partners – total trade (goods), Sep-2017.

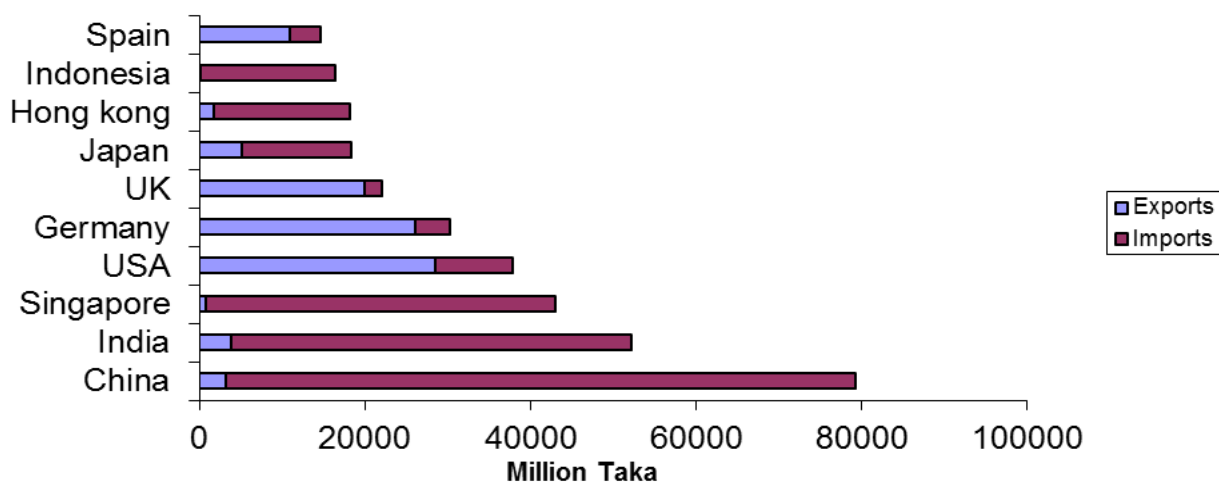


Table 14. Top trading partners – exports (goods), September -2017

(In million taka)

Country	Export	Rank	Percent of Total Export
United States	28552	1	17.27
Germany	26156	2	15.82
United Kingdom	20024	3	12.11
Spain	11007	4	6.66
France	7537	5	4.56
Italy	5810	6	3.51
Netherlands	5520	7	3.34
Japan	5161	8	3.12
Canada	4303	9	2.60
India	3859	10	2.33

Table 15. Top trading partners – imports (goods), September -2017

(In million taka)

Country	Import	Rank	Percent of Total Import
China	76082	1	19.89
India	48417	2	12.66
Singapore	42264	3	11.05
Hong kong	16448	4	4.30
Indonesia	16272	5	4.25
Japan	13219	6	3.46
Brazil	12458	7	3.26
Malaysia	12107	8	3.17
United States	9264	9	2.42
Thailand	9224	10	2.41

Table 16. Monthly merchandise export (2 digit HS code)

(In million taka)

HS Code	Commodities	2016-17		% change from previous month
		Aug'17	Sep'17	
1	Live animals	0.04	-	-
2	Meat and edible meat offal	0.37	0.71	91.89
3	Fishes, crustacean and other aquatic	5340.36	3494.79	-34.56
4	Dairy produces edible product of animal origin.	9.48	1.76	-81.43
5	Products of animal origin	109.63	140.6	28.25
6	Live tree Plant bulbroot etc.	0.12	-	-
7	Edible vegetables, roots as tubers	640.11	529.94	-17.21
8	Edible fruits and nuts citrus fruits	94.11	4.81	-94.89
9	Coffee, tea, mate and spices	405.49	245.21	-39.53
10	Cereals	27.54	19.5	-29.19
11	Product of milling industry : malt etc.	7.75	16.23	109.42
12	Oil seeds and oleaginous fruits	96.05	70.02	-27.10
13	Lac, gum resin vegetable sap/ extract	-	-	-
14	Vegetable plaiting materials	71.55	48.72	-31.91
15	Animal or vegetable fats and oils	261.6	128.99	-50.69
16	Preparations of meat or fish etc.	12.39	27.08	118.56
17	Sugar and sugar confectionery	146.96	143.17	-2.58
18	Cocoa and cocoa preparations	8.33	8.74	4.92
19	Preparations of cereals, flour, starch etc.	1211.39	766.75	-36.70
20	Preparations of vegetable fruits, nuts, etc.	909.98	634.73	-30.25
21	Misc. edible preparations	4.67	4.28	-8.35
22	Beverages, spirits and vinegar	268.72	184.68	-31.27
23	Residues & waste from the food industry	8.69	3.92	-54.89
24	Tobacco mfg tobacco substitutes	569.18	427.63	-24.87
25	Salt, sulphr etc. & plastering metals stone cement	82.83	52.66	-36.42
26	Ores, slag and ash	84.7	9.8	-88.43
27	Mineral, fuels/oils etc.	1984.16	867.43	-56.28
28	Inorganic chem. comp of specious metals etc.	219.44	139.83	-36.28
29	Organic chemicals	14.47	13.48	-6.84
30	Pharmaceutical products	689.94	661.48	-4.12
31	Fertilizers	-	-	-
32	Tanning/dyeing ext; dye pigments etc.	6.61	5.48	-17.10
33	Essential oils, perfumery/toilet pre.	0.32	-	-

Table 16. Monthly merchandise export (2 digit HS code)

(in million taka)

HS Code	Commodities	2016-17		% change from previous month
		Aug'17	Sep'17	
34	Soap, organic Surface-active agents etc.	12.75	9.67	-24.16
35	Albuminoidal substitute starches, glues etc.	11.48	6.83	-40.51
36	Explosive pyrotechnic products	-	-	-
37	Photographic/cinematographic goods	-	-	-
38	Miscellaneous chem. products	67.28	53.36	-20.69
39	Plastics and articles thereof	683.3	457.26	-33.08
40	Rubber and articles thereof	259.66	143.96	-44.56
41	Raw hides & skins, leather	1613.51	1088.37	-32.55
42	Articles of Leather/Animal Gut	3676.38	2220.49	-39.60
43	Fur skins & artificial fur. Mfg.	-	-	-
44	Wood & art. of wood; wood charcoal	6.98	11.89	70.34
45	Cork and articles of cork	-	-	-
46	Manufactures of straw etc.	128.73	61.29	-52.39
47	Pulp/ wood/fibrous cellulose materials etc.	-	-	-
48	Paper & paper board; art. P. pulp etc.	680.95	317.65	-53.35
49	Printed books, news papers, pictures etc.	3.77	1.72	-54.38
50	Silk	-	-	-
51	Wool, fine/coarse animal hair etc.	-	1.17	-
52	Cotton	1132.42	560.32	-50.52
53	Other vegetable, Textile fibres, paper/yarn etc	6502.68	5751.07	-11.56
54	Man-made filaments	280.72	213.71	-23.87
55	Man-made staple fibres	174.04	88.27	-49.28
56	Wadding felts nonwovens, special yarn etc.	197.08	117.92	-40.17
57	Carpet other text. floor coverings	116.08	99.91	-13.93
58	Special woven fabrics, tufted tex.fabrics etc.	405.09	225.74	-44.27
59	Impregnated, coated, textile fabrics etc.	107.7	89.8	-16.62
60	Knitted or crocheted fabrics	277.47	134.54	-51.51
61	Article of appl. clothing accesso. knit / crocht.	129534.08	70910.73	-45.26
62	Article of appl. clothing accesso. knit/	116025.38	59817.07	-48.44
63	Other made up textile articles etc.	7042	5045.34	-28.35
64	Footwear, gaiter & like etc.	7535.93	4156.3	-44.85
65	Headgear and parts thereof	1575.05	868.52	-44.86

Table 16. Monthly merchandise export (2 digit HS code)

(In million taka)

HS Code	Commodities	2016-17		% change from previous month
		Aug'17	Sep'17	
66	Umbrellas, sun umbrellas, walk sticks etc.	-	-	-
67	Prepared feathers & down/articles etc.	265.01	100.34	-62.14
68	Art of stone, plastic, cement etc.	10.36	0.48	-95.37
69	Ceramic products	346.62	264.37	-23.73
70	Glass and glassware	14.61	12.25	-16.15
71	Natural/culture pearls precious stones etc.	37.07	15.24	-58.89
72	Iron or steel	130.99	111.29	-15.04
73	Articles of iron or steel	143.4	89.01	-37.93
74	Copper and articles thereof	268.69	249.63	-7.09
75	Nickel and articles thereof	8.92	25.67	187.78
76	Aluminum and article thereof	32.24	4.2	-86.97
78	Lead and articles thereof	11.55	-	-
79	Zinc and articles thereof	86.16	20.97	-75.66
80	Tin and articles thereof	-	-	-
81	Other base metals, cermets etc.	-	5.54	-
82	Tools, cutlery Spon base Metl Part	85.3	24.74	-71.00
83	Miscellaneous art of base metal.	24.27	1.74	-92.83
84	Nuclear reactors, boilers etc.	1990.12	714.13	-64.12
85	Electrical mach. & equipment, parts etc.	784.83	904.25	15.22
86	Rail/tramway locomotives etc.	3.26	24.71	657.98
87	Vehicles, other than rail/tram way's & parts etc.	727.75	663.68	-8.80
88	Aircraft, space craft and parts.	33.43	0.75	-97.76
89	Ships, boats & floating structures	-	0.7	-
90	Optical,photo,cinematgph.Medical inst.etc.	811.55	510.7	-37.07
91	Clocks & watches & parts	4.43	0.82	-81.49
92	Musical /instruments and parts etc.	0.02	-	-
93	Arms, & ammunition and parts & accessories	-	-	-
94	Furniture, bedding, mattresses etc.	397.58	156.14	-60.73
95	Toys, games & sports requisites & parts	369.17	221.61	-39.97
96	Miscellaneous mfg. articles	130.24	95.08	-27.00
97	Works/ art, collectors & antiques	0.53	0.08	-84.91
98	Goods Commodities NEC	5.98	7.48	25.08
Total		298061.59	165330.92	-44.53

Table 17. Monthly export of major commodities (4 digits)

(In million taka)

HS Code	Commodities	2016-17		% change from previous month
		Aug'17	Sep'17	
303	Fish frozen	232.51	189.75	-18.39
304	Fish fillet, other fish meal	0.12	-	-
305	Fish dried	28.13	24.25	-13.79
306	Shrimps & prawns frozen	4985.65	3187.53	-36.07
307	Molluscs	15.94	34.79	118.26
506	Bone and horn- cores	11.79	5.21	-55.81
709	Vegetable fresh, chilled other	59.25	57.66	-2.68
902	Tea	24.32	8.87	-63.53
1006	Rice	27.54	19.5	-29.19
2401	Un-manufactured tobacco	545	416.62	-23.56
2710	Petro oil/oil bitum minrl, nec	1985.13	867.41	-56.30
3003-004	Pharmaceutical product	686.26	657.86	-4.14
3901-926	Plastic & articles thereof	683.26	457.24	-33.08
4102	Raw hides & skin of sheep's or lambs	-	-	-
4103	Raw hides and skin other	5.41	-	-
4104	Leather Bovine/Equin W/Out hair	932.31	675.61	-27.53
4105	Tanned or crust skins of sheep or lambs	0.69	8.44	1123.19
4106	Tanned or crust hides and skins or other animals	66.82	79.17	18.48
4107	Leather hole hides and skins or crusting	492.4	311.72	-36.69
	Leather further prepared after tanning or crusting including parchment-dressed	114.82	13.43	
4113	leather of other animals			-88.30
4202	Trunks, suit-case, vanity-cases, brief cases, and other	1714.21	1231.82	-28.14
4602	Basket work, wicker work, and other articles	127.87	60.61	-52.60
5303	Jute and other textile bast fibres, raw or retted	957.33	1103.11	15.23
5307	Jute yarn	4792.39	4170.73	-12.97
5310	Woven fabrics and jutes or of other textile bast fibres	739.02	477.23	-35.42
5607	Jute twine, cordage, roofs and cables	109.77	59.14	-46.12
6101-117	Readymade garments men's women's and girls knitted and crocheted	129534.1	70910.72	-45.26
6201-217	Readymade garments men's women's and girls not knitted and crocheted	116025.4	59817.05	-48.44
6305	Sacks and bags, of a kind used for the packing of goods	1296.17	1094.28	-15.58
6401-6406	Foot ware with outer soles and uppers of rubber or of plastics and other	7535.93	4156.30	-44.85
6505	Heads and other headgear, knitted or crocheted	1548.39	861.08	-44.39
	Total	275277.89	150957.13	-45.16

Table 18. Monthly merchandise import (2 digit HS code)

(In million taka)

H S Code	Commodities	2016-17		% change From previous month
		Aug'17	Sep'17	
1	Live animals	82.97	138.09	66.43
2	Meat and edible meat offal	47.66	15.09	-68.34
3	Fishes, crustacean and other aquatic	333.94	165.57	-50.42
4	Dairy produces edible product of animal origin.	1658.8	1413.38	-14.80
5	Products of animal origin	237.89	45.65	-80.81
6	Live tree and other plants etc.	9.13	5.8	-36.47
7	Edible vegetables, roots as tubers	5188.35	3682.23	-29.03
8	Edible fruits and nuts citrus fruits	2194.2	2205.46	0.51
9	Coffee, tea, mate and spices	3483.41	1631.87	-53.15
10	Cereals	23684.67	30862.29	30.30
11	Product of milling industry: malt etc.	188.7	191.97	1.73
12	Oil seeds and oleaginous fruits	4895.97	4748.36	-3.01
13	Lac, gums, resins , vegetable saps & extra	99.46	97.29	-2.18
14	Vegetable plaiting materials	13.72	21.7	58.16
15	Animal or vegetable fats and oils	21627.6	24873.81	15.01
16	Preparations of meat or fish etc.	10.22	13.37	30.82
17	Sugar and sugar confectionery	9640.7	8178.98	-15.16
18	Cocoa and cocoa preparation	93.87	69.61	-25.84
19	Preparations of cereals, flour, starch etc.	580.89	495.07	-14.77
20	Preparations of vegetable, fruits, nuts, etc.	85.01	75.79	-10.85
21	Misc. edible preparations	633.67	604.91	-4.54
22	Beverages, spirits and vinegar	68.29	42.98	-37.06
23	Residues & waste from the food industries	7770.77	7151.01	-7.98
24	Tobacco mfg tobacco substitutes	97.8	21.81	-77.70
25	Salt, sulphur, etc. and plastering metals stone cement	9737.39	7054.04	-27.56
26	Ores, slag and ash	1351.06	546.89	-59.52
27	Mineral, fuels/oils etc.	39439.42	40078.13	1.62
28	Inorganic. Chem.: compounds of specious metals etc.	2848.16	2441.54	-14.28
29	Organic Chemicals	5897.06	5197.84	-11.86
30	Pharmaceutical products	1494.95	944.17	-36.84
31	Fertilizers	6573.38	6875.9	4.60
32	Tanning/dyeing ext; dye pigments etc.	4769.17	4365.82	-8.46
33	Essential Oils, perfumery/toilet pre.	973	846.75	-12.98
34	Soap, organic surface-active agents etc.	1210.94	1019.73	-15.79

Table 18. Monthly merchandise import (2 digit HS code)

(In million taka)

H S Code	Commodities	2016-17		% change from previous month
		Aug'17	Sep'17	
35	Albuminoidal substitute starches, glues e	763.16	662.62	-13.17
36	Explosives pyrotechnic products etc.	27.31	0.31	-98.86
37	Photographic/cinematographic goods	152.86	72.43	-52.62
38	Miscellaneous chem. products	5259.09	4053.81	-22.92
39	Plastics and articles thereof	14297.95	13368.8	-6.50
40	Rubber and articles thereof	2677.13	1949.35	-27.19
41	Raw hides & skins, leather	1345.87	1160.65	-13.76
42	Articles of Leather/Animal gut	275.13	282.05	2.52
43	Fur skins & artificial fur. Mfg.	9.72	1.73	-82.20
44	Wood & art. of wood; wood charcoal	1116.4	836.42	-25.08
45	Cork and articles of cork	4.48	2.44	-45.54
46	Manufactures of straw etc.	2.36	2.34	-0.85
47	Pulp/ wood/fibrous cellulosic materials etc.	1964.65	1192.15	-39.32
48	Paper & paper board; art. Paper pulps etc.	5168.51	3907.23	-24.40
49	Printed Book, News paper & picture	187.87	88.52	-52.88
50	Silk	3.46	7.78	124.86
51	Wool, fine/coarse animal hair etc.	157.37	44.66	-71.62
52	Cotton	60372.82	47567.15	-21.21
53	Other vegetabe, textile fibres, paper/yarn etc.	237.47	216.76	-8.72
54	Man-made filaments	9313.25	7650.26	-17.86
55	Man-made staple fibres	11687.6	9000.9	-22.99
56	Wadding felts non-wovens, special yarn etc.	510.74	443.15	-13.23
57	Carpet other text. floor coverings	31.88	46.62	46.24
58	Special woven fabrics, tufted textile fabrics etc.	1293.72	1243.87	-3.85
59	Impregnated, coated, textile fabrics etc.	1450.25	917.42	-36.74
60	Knitted or crocheted fabrics	6404.25	5385.59	-15.91
61	Article of apparel. clothing accessor. knit / crocht.	266.56	131.33	-50.73
62	Articl of apparel.clothing accessor.n-knit/ crocht.	4856.77	4436.34	-8.66
63	Other made up textile articles etc.	183.9	604.51	228.72
64	Footwear, gaiter & like etc.	1254.08	938.45	-25.17
65	Headgear and parts thereof	32.09	18.42	-42.60
66	Umbrellas, sun umbrellas, walk sticks etc.	53.88	11.31	-79.01

Table18. Monthly merchandise import (2 digit HS code)

(In million taka)

H S Code	Commodities	2016-17		% change from previous month
		Aug'17	Sep'17	
67	Prepared feather & down articles	183.52	101.63	-44.62
68	Art of stone, plastic, cement etc.	430.1	303.91	-29.34
69	Ceramic products	1007.09	710.68	-29.43
70	Glass and glassware	678.14	510.43	-24.73
71	Natural/culture pearls & precious stones	69.94	20	-71.40
72	Iron or steel	22736.57	13331.06	-41.37
73	Articles of iron or steel	6105.96	3658.42	-40.08
74	Copper and articles thereof	1856.73	1793.96	-3.38
75	Nickel and articles thereof	19.84	9.78	-50.71
76	Aluminum and article thereof	2550.96	3045.56	19.39
78	Lead and articles thereof	571.54	600.34	5.04
79	Zinc and articles thereof	1195.93	1053.39	-11.92
80	Tin and articles thereof	26.65	63.79	139.36
81	Other base metals, cermets etc.	19.3	20.91	8.34
82	Tools, implements, cutlery etc.	411.18	334.16	-18.73
83	Miscellaneous art of base metal.	782.52	691.35	-11.65
84	Nuclear reactors, boilers etc.	54942.41	39675.88	-27.79
85	Electrical mach. & equipment, parts etc.	24563.43	20616.21	-16.07
86	Rail/tramway locomotives etc.	278.36	20.77	-92.54
87	Vehicles, other than rail/tram way's & parts etc.	13044.61	9962.39	-23.63
88	Aircraft, space craft and parts.	509.41	3354.01	558.41
89	Ships, boats & floating structures	4884.55	9539.38	95.30
90	Optical, Photograph, Cinematograph,Medical Inst.	3930.62	4092.66	4.12
91	Clocks & watches & parts.	63.74	29.91	-53.07
92	Musical /instruments and parts etc.	4.15	7.47	80.00
93	Arms, & ammunition and parts & accessories	51.05	3660.53	7070.48
94	Furniture, bedding, mattresses etc.	859.7	576.15	-32.98
95	Toys, games & sports requisites & parts etc.	281.37	260.36	-7.47
96	Miscellaneous mfg. articles	2103.62	1946.58	-7.47
97	Works/ art, collectors & antiques	3.45	1.07	-68.99
98	Goods commodities nec	7.12	62.69	780.48
Total		432558.36	382423.70	-11.59

Table 19. Monthly import of major commodities (4 digits)

(In million taka)

H S Code	Commodities	2016-17		% change From previous month
		Aug'17	Sep'17	
401	Milk & cream	3.72	3.17	-14.78
703	Onion & Garlic	3227.13	1866.62	-42.16
713	Dried leguminous vegetable	1694.31	1575.21	-7.03
804	Dates	50.07	29.32	-41.44
806	Grapes	208.17	171.97	-17.39
808	Apples	831.11	972.93	17.06
904	Pepper	877.96	357.52	-59.28
1001	wheat	6579.26	11739.06	78.43
1006	Rice	15008.01	13776.10	-8.21
1108	Starches	165.37	180.81	9.34
1201-1212	Oil seeds	4895.97	4748.37	-3.01
1507	Soya bean oil	7226.09	6540.96	-9.48
1511	Palm Oil	13937.82	17963.47	28.88
1701	Sugar	9512.64	8079.10	-15.07
2401	Un-manufactured tobacco	70.51	15.01	-78.71
2523	Cement	6223.77	3524.12	-43.38
2710	Petroleum product	33268.41	37426.11	12.50
2801-2851	In organic Chemicals	2847.97	2441.41	-14.28
2901-2942	Organic Chemicals	5897.08	5197.85	-11.86
3101-3105	Fertilizers	6573.37	6875.91	4.60
3201-3215	Tanning & dyeing	4769.16	4365.92	-8.46
3801-3825	Chemical product	5259.07	4053.79	-22.92
3901-3926	Plastic & articles thereof	14297.95	13368.81	-6.50
4801-4823	Paper & paper board	5168.16	3907.22	-24.40
5201-5203	Raw cotton	27006.42	17278.38	-36.02
5205-5207	Cotton yarn	8464.56	6875.52	-18.77
5208-5212	Cotton fabric	24852.26	23378.02	-5.93
5402-5406	Synthetic yarn	3601.66	2666.47	-25.97
5407-5408	Synthetic fabric	4163	4135.69	-0.66
5504-5507	Staple fibre	1153.3	746.34	-35.29
5509-5511	Yarn of staple fibre	2947.37	1890.91	-35.84
5512-5516	Fabric of staple fibre	5346.11	4907.56	-8.20
7201-7229	Iron & steel	22736.51	13331.08	-41.37
7301-7326	Article of iron & steel	6105.91	3658.40	-40.08
7601-7616	Aluminum & article thereof	2550.89	3045.56	19.39
8402-8485	Machinery & parts	54878.45	39634.85	-27.78
8501-8548	Electrical goods	24451.45	20125.80	-17.69
8607-8609	Rail, tramway, locomotive	278.35	20.77	-92.54
8701-8716	Vehicle	13044.61	9962.34	-23.63
8902,8903,8908	Ships, boat, floating structure	4226.21	7754.64	83.49
9001-9033	Optical, Photo, Cinema etc.	3750.89	4092.65	9.11
Total		358151.03	312685.74	-12.69

Table 20. Re-exports Value, September -2017 by 2 digit HS Code.

HS CODE	HS DESCRIPTIONS	(In million taka)
Total: Re-exports		728.10
29	Organic Chemicals	1.05
34	Soap, organic surface-active agents etc.	0.03
38	Miscellaneous chem. products	0
39	Plastics and articles thereof	0.24
40	Rubber & articles thereof	0
41	Raw hides & skins of bovine	9.47
48	Paper & paper board; art. Paper pulps etc.	0.07
52	Cotton	27.30
54	Man-made filaments	1.99
55	Man-made staple fibres	.46
59	Impregnated, coated, textile fabrics etc.	0.17
60	Knitted or crocheted fabrics	0.32
61	Article of apparel. clothing accessor. knit /crocht.	8.30
62	Articl of apparel.cloth accessor.n-knit	6.10
64	Footwear, gaiter & like etc.	16.38
68	Art of stone, plastic, cement etc.	0.48
71	Natural/culture pearls & precious stones	1.37
73	Articles of iron & steel	8.68
82	Tool cut spon base metl & parts	2.71
84	Nuclear rect boil mach & parts	528.51
85	Electrcl machinery eqipmnt part	72.96
86	Rail/tramway locomotives etc.	21.67
87	Vechicle otr rail/tram rol-stoc	0.37
88	Aircraft, space craft and parts.	0
90	Optical , photo, cinma surgi apt	19.39
94	Furniture, bedding, mattresses etc.	0.04

Table 21. Re-Import Value, September -2017 by 2 digit HS Code.

HS CODE	HS DESCRIPTIONS	(In million taka)
Total: Re-Import		3.00
84	Nuclear rect boil mach & parts	2.68
85	Electrcl machinery eqipmnt part	0.32

Table 22 . Temporary export Value September -2017 by 2 digit HS Code

HS CODE	HS DESCRIPTIONS	(In million taka)
	Total : Temporary- Exports	459.00
39	Plastics and articles thereof	0.09
40	Rubber & articles thereof	0.21
73	Articles of iron & steel	0.04
84	Nuclear rect boil mach & parts	10.42
85	Electrcl machinery eqipmnt part	444.66
88	Aircraft, space craft and parts.	0.74
90	Optical , photo, cinma surgi apts	2.74
94	Furniture, bedding, mattresses etc.	0.09

Table 23 . Temporary Import Value, September -2017 by 2 digit HS Code

HS CODE	HS DESCRIPTIONS	(In million taka)
	Total : Temporary- Exports	169.22
03	Fishes, crustacean and other aquatic	17.91
28	Inorganic. Chem.: compounds of specious metals etc.	0.44
40	Rubber & articles thereof	0.06
44	Wood & art. of wood; wood charcoal	0.82
48	Paper & paper board; art. Paper pulps etc.	0
73	Articles of iron & steel	22.25
82	Tool cut spon base metl & parts	5.49
84	Nuclear rect boil mach & parts	97.22
85	Electrcl machinery eqipmnt part	0.33
86	Rail/tramway locomotives etc.	0.33
87	Vechicle otr rail/tram rol-stoc	24.29
90	Optical , photo, cinma surgi apts	0.07
94	Furniture, bedding, mattresses etc.	0.01