

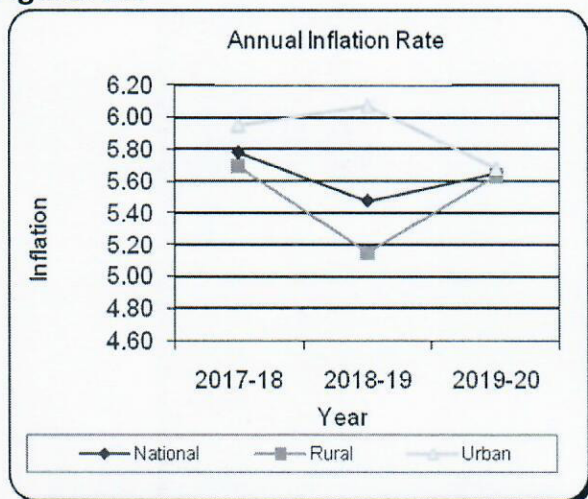
**Table: 1.1 Consumer Price Index (CPI) and Inflation Rate (Point to Point)**

(2005-06=100)

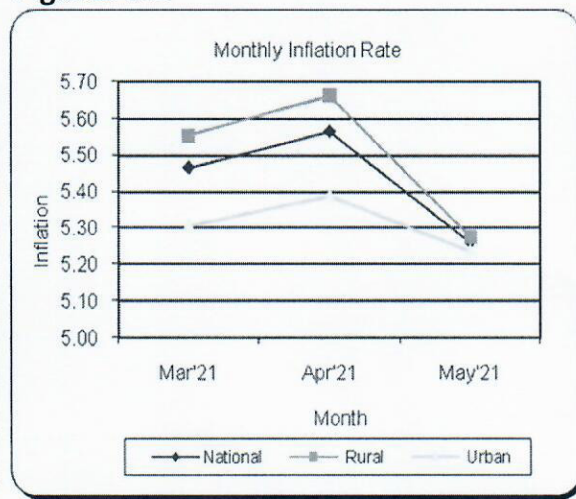
CPI Classification	2017-18	2018-19	2019-20	2019-20			2020-21		
				Mar'20	Apr'20	May'20	Mar'21	Apr'21	May'21
1	2	3	4	5	6	7	8	9	10
<b>NATIONAL</b>									
General index	245.22	258.65	273.26	276.83	278.39	273.53	291.96	293.88	287.92
<i>Inflation</i>	5.78	5.48	5.65	5.48	5.96	5.35	5.47	5.56	5.26
Food index	266.64	281.33	296.86	300.74	303.39	294.08	317.32	320.28	308.41
<i>Inflation</i>	7.13	5.51	5.56	4.87	5.91	5.09	5.51	5.57	4.87
Non-food index	217.76	229.58	243.00	246.17	246.34	247.17	259.44	260.02	261.65
<i>Inflation</i>	3.73	5.43	5.85	6.45	6.04	5.75	5.39	5.55	5.86
<b>RURAL</b>									
General index	244.17	256.74	271.20	275.39	277.16	271.39	290.68	292.85	285.71
<i>Inflation</i>	5.69	5.15	5.63	5.47	6.08	5.65	5.55	5.66	5.28
Food index	259.86	273.55	289.08	294.01	296.83	286.89	311.14	314.27	301.94
<i>Inflation</i>	6.90	5.27	5.68	5.06	6.17	5.61	5.83	5.88	5.25
Non-food index	219.21	230.01	242.74	245.75	245.86	246.74	258.12	258.77	259.90
<i>Inflation</i>	3.48	4.93	5.53	6.27	5.92	5.73	5.03	5.25	5.33
<b>URBAN</b>									
General index	247.17	262.17	277.06	279.49	280.66	277.47	294.32	295.78	292.00
<i>Inflation</i>	5.95	6.07	5.68	5.49	5.73	4.81	5.31	5.39	5.24
Food index	283.19	300.30	315.83	317.16	319.39	311.63	332.39	334.96	324.20
<i>Inflation</i>	7.63	6.04	5.17	4.44	5.33	3.94	4.80	4.87	4.03
Non-food index	215.83	229.00	243.34	246.72	246.98	247.75	261.21	261.70	264.00
<i>Inflation</i>	4.08	6.10	6.26	6.69	6.20	5.78	5.87	5.96	6.56

(C)=Correct

**Figure: 1.1**



**Figure: 1.2**



*[Handwritten signature]*

*[Handwritten signature]*