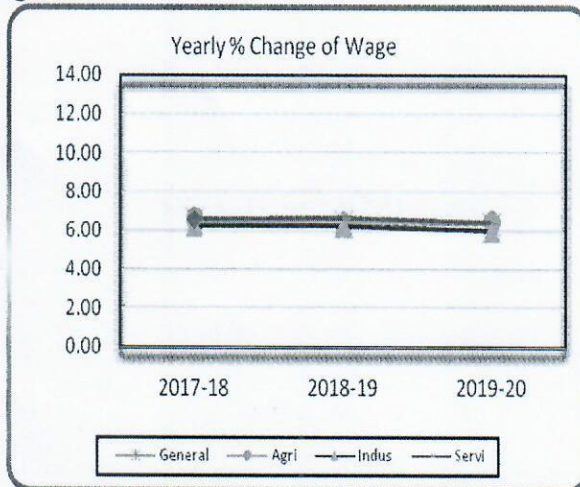


**Table: 2.1 Wage Rate Index by Sectors: Bangladesh (Base: 2010-11=100)**

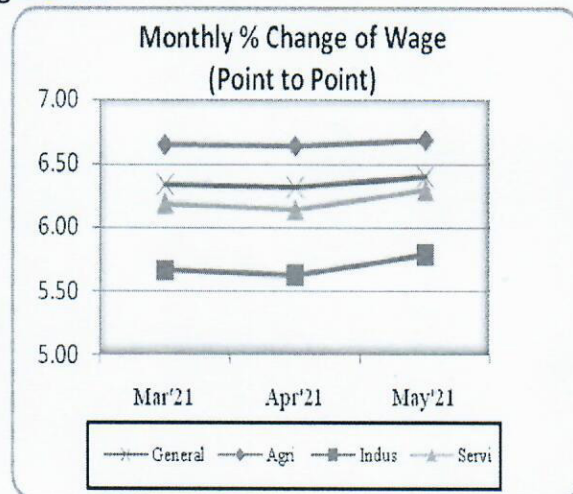
Sector	2017-18	2018-19	2019-20	Mar'21	Apr'21	May'21
1	2	3	4	5	6	7
<b>General</b>	150.59	160.23	170.39	184.54	184.45	<b>184.68</b>
percentage change (Point to Point)	6.46	6.40	6.35	6.34	6.32	<b>6.41</b>
percentage change(over previous month)				0.39	-0.05	<b>0.12</b>
1. Agriculture	150.27	159.92	170.28	185.01	184.95	<b>185.11</b>
percentage change (Point to Point)	6.41	6.42	6.48	6.65	6.64	<b>6.69</b>
percentage change(over previous month)				0.30	-0.03	<b>0.09</b>
I. Agriculture	150.23	159.91	170.32	185.08	185.05	<b>185.21</b>
percentage change (Point to Point)	6.40	6.44	6.51	6.67	6.67	<b>6.71</b>
percentage change(over previous month)				0.30	-0.02	<b>0.09</b>
II. Fish	152.63	160.59	168.58	181.27	180.23	<b>180.23</b>
percentage change (Point to Point)	6.61	5.22	4.97	6.03	5.47	<b>5.45</b>
percentage change(over previous month)				0.33	-0.58	<b>0.00</b>
2. Industry	149.45	158.74	168.24	180.91	180.77	<b>181.11</b>
percentage change (Point to Point)	6.55	6.22	5.99	5.66	5.62	<b>5.79</b>
percentage change(over previous month)				0.60	-0.08	<b>0.19</b>
I. Construction	145.32	152.86	160.17	169.69	169.61	<b>169.83</b>
percentage change (Point to Point)	5.75	5.19	4.77	4.44	4.42	<b>4.53</b>
percentage change(over previous month)				0.58	-0.05	<b>0.13</b>
II. Production	157.81	170.66	184.65	203.65	203.40	<b>203.99</b>
percentage change (Point to Point)	8.08	8.14	8.21	7.79	7.72	<b>7.97</b>
percentage change(over previous month)				0.63	-0.12	<b>0.29</b>
3. Service	154.44	164.78	175.33	189.68	189.55	<b>189.87</b>
percentage change (Point to Point)	6.51	6.69	6.41	6.19	6.14	<b>6.30</b>
percentage change(over previous month)				0.42	-0.07	<b>0.17</b>

Note : ( C ) =Corrected and Revised.

**Figure: 2.1**



**Figure: 2.2**



*[Handwritten signature]*

*[Handwritten signature]*