



## Small Area Estimation

Upazila Level Prevalence of Participation in Organized Learning and Child Marriage in Bangladesh



Demography and Health Wing  
Bangladesh Bureau of Statistics (BBS)  
Statistics and Informatics Division (SID)  
Ministry of Planning





**Report on  
Small Area  
Estimation**

# Upazila Level Prevalence of Participation in Organized Learning and Child Marriage in Bangladesh

**April 2024**



Statistics and Informatics  
Division (SID)



Bangladesh Bureau of  
Statistics (BBS)



United Nations Children's  
Fund

**Published by:**

Bangladesh Bureau of Statistics (BBS) and United Nations Children's Fund (UNICEF)  
April 2024

For further information on this Report please contact:

Demography and Health Wing  
Bangladesh Bureau of Statistics (BBS)  
Statistics and Informatics Division (SID)  
Parishankhyan Bhaban  
E-27/A, Agargaon, Dhaka-1207  
Phone (Office): 02-55007058  
E-mail: [mashud2003@yahoo.com](mailto:mashud2003@yahoo.com)  
Website: [www.bbs.gov.bd](http://www.bbs.gov.bd)

Social Policy, Evaluation, Analytics and Research Section (SPEAR)  
UNICEF Bangladesh  
UNICEF House, Plot E-30  
Syed Mahbub Morshed Avenue, Sher-e-Bangla Nagar  
Dhaka 1207, Bangladesh  
Telephone (Office): +880 9604107140  
Website: [www.unicef.org](http://www.unicef.org)

---

This book or any portion thereof cannot be copied, microfilmed or reproduced for any commercial purpose. Data therein can, however, be used and published with the acknowledgement of the sources.

## Table of Content

<b>Foreword</b> .....	i
<b>Preface</b> .....	iii
<b>Acronyms</b> .....	v
<b>1. Introduction</b> .....	1
1.1 Introduction.....	1
1.2 Administrative Units of Bangladesh.....	2
1.3 Literature of SAE and SAE of Participation in Organized Learning and Child Marriage.....	2
1.4 Measures of Participation in Organized Learning and Child Marriage.....	5
1.5 Scope and Objectives.....	5
<b>2. Data and Methodology</b> .....	7
2.1 Multiple Indicator Cluster Survey 2019 .....	7
2.2 Bangladesh Population and Housing Census 2011 (Census 2011) .....	7
2.3 SAE Methodology .....	8
2.4 Selection of Auxiliary Data .....	8
2.5 Fitting the First Stage Model .....	9
2.6 Variance Modelling .....	10
2.7 Simulation of Predicted Values .....	10
2.8 Production of Final Estimates.....	11
<b>3. Results for Participation in Organized Learning and Child Marriage</b> .....	13
3.1 Results for Participation in Organized Learning .....	13
3.2 Results for Child Marriage of Before 18 .....	16
3.3 Results for Child Marriage of Age Before 15.....	19
3.4 Maps for Participation in Organized Learning and Child Marriage.....	21
<b>4. Conclusion and Discussion</b> .....	23
<b>5. Appendices</b> .....	25
A. Potential Auxiliary Variables.....	25
B.1 Model for Participation in Organized Learning in MICS 2019 .....	26
B.2 Model for Child Marriage Before 18 in MICS 2019 .....	26
B.3 Model for Child Marriage Before 15 in MICS 2019 .....	27
C. Summary of Small-Area Estimates .....	27
D1: Small-Area MAPS at District Level .....	78
D2. Maps at Small Area Level.....	84
E. Committees Involved.....	90

## List of Tables

Table 3.1 Summary of District-Level Estimates of Participation in Organized Learning Prevalence .....	16
Table 3.2 Summary of Upazila-Level Estimates of Participation in Organized Learning Prevalence .....	16
Table 3.3 Summary of District-Level Estimates of Child Marriage of Age Before 18 Prevalence .....	18
Table 3.4 Summary of Upazila-Level Estimates of Child Marriage of Age Before 18 Prevalence .....	19
Table 3.5 Summary of District-Level Estimates of Child Marriage of Age Before 15 Prevalence .....	21
Table 3.6 Summary of Upazila-Level Estimates of Child Marriage of Age Before 15 prevalence .....	21

## List of Figures

Figure 3.1 Scatter Plot of District Level Small Area Estimates of Participation in Organized Learning.....	14
Figure 3.2 Q-Q Plot of the Z-score Computed for Comparison Between SAE of Participation in Organized Learning for District Against the District Estimates Provided in MICS 2019 .....	15
Figure 3.3 Scatter Plot of District Level Small Area Estimates of Child Marriage of Age Before 18 .....	17
Figure 3.4 Q-Q Plot of the Z-Score Computed for Comparison Between SAE of Child Marriage of Age Before 18 for District Against the District Estimates Provided in MICS 2019.....	18
Figure 3.5 Scatter Plot of District Level Small Area Estimates of Child Marriage of Age Before 15 .....	20
Figure 3.6 Q-Q Plot of the Z-Score Computed for Comparison Between SAE of Child Marriage of Age Before 15 for District Against the District Estimates Provided In MICS 2019.....	20









**Secretary**  
Statistics and Informatics Division (SID)  
Ministry of Planning  
Government of the People's Republic of  
Bangladesh

## FOREWORD

It is my immense pleasure to compliment the Bangladesh Bureau of Statistics (BBS) on publishing the report on 'Upazila Level Prevalence of Participation in Organized Learning and Child Marriage in Bangladesh' using Multiple Indicator Cluster Survey (MICS) 2019 data. The MICS 2019 estimates prevalence of these indicators for the whole country, each division and each district. However, there is a rising demand for the estimates of these indicators at a smaller delineation by the policymakers in planning and monitoring the effectiveness of the policies and programmes.

The estimates of organized learning and child marriage has been shown at the appropriate level of disaggregation. This analysis includes an investigation using Small Area Estimation (SAE) methods of how accurately the estimates of organized learning and child marriage may be disaggregated while maintaining an appropriate precision level.

I would like to thank Mr. Mohammed Mizanur Rahman, Director General of BBS for providing timely support and guidance to the successful completion of the activity. Special thanks to Mr. Md. Mashud Alam, Director, Demography and Health Wing, BBS and his team for their hard work and dedication for completing this report. All the distinguished members of the Programme Implementation Committee (PIC), Working Committee, Report Review Committee and Editor's Forum also deserve special thanks.

I deeply acknowledge the support of UNICEF Bangladesh in the execution of this activity. I would like to express my thanks to Dr. Syed Shahadat Hossain, Professor, Institute of Statistical Research and Training (ISRT), University of Dhaka for his technical inputs and support to finalize the report.

Finally, I expect that the findings depicted in the report will be pivotal for planners, policymakers and other stakeholders in formulating policies in Bangladesh.

April, 2024

**Dr. Shahnaz Arefin, *ndc***





**Director General**

Bangladesh Bureau of Statistics (BBS)

## PREFACE

Small Area Estimation (SAE) provides information on smaller delineation. It helps policymakers in planning and monitoring the effectiveness of their policies and programmes. This necessity has been intensified due to the fact that the Government is mandated to a perpetual tracking and monitoring of the indicators of the SDG towards 2030. Considering the situation Bangladesh Bureau of Statistics (BBS) has done the SAE for selected indicators.

According to MICS 2019, Bangladesh showed improvement in increasing participation in organized learning from 13.4% in 2012 to 77.4% in 2019. Moreover, Bangladesh achieved a reduction in child marriage from 62% in 2012 to 53% in 2019. Despite these improvements, it is necessary to estimate the prevalence of these indicators at lower-level geographical areas so that more vulnerable areas can be targeted. This report has taken this attempt through the technique of SAE.

I would like to express my gratitude to Secretary of Statistics and Informatics Division, Ministry of Planning for providing guidance and valuable support to complete this technical report. Special thanks to the distinguished members of the Programme Implementation Committee (PIC), Working Committee and other related committees for their contribution to prepare the report.

Furthermore, my sincere appreciation to Mr. Md. Mashud Alam, Director, Demography and Health Wing, BBS and his team for their hard work and dedication for completing this report. I would also like to extend my thanks to Dr. Syed Shahadat Hossain, Professor, Institute of Statistical Research and Training (ISRT), University of Dhaka and Mr. Md. Mynul Islam, Assistant Professor, ISRT, University of Dhaka for their technical inputs in the estimation procedure and the report generation.

My special thanks to UNICEF Bangladesh for providing support to prepare this report successfully. I hope this report will be helpful to support evidence-based policies, planning, and undertake in-depth analysis for development partners, NGOs, other practitioners, researchers and students.

Suggestions and comments for further improvement will be highly appreciated.

April, 2024

**Mohammed Mizanur Rahman**



## Acronyms

BBS	:	Bangladesh Bureau of Statistics
EAs	:	Enumeration Areas
ELL method	:	Elbers, Lanjouw and Lanjouw method
GIS	:	Geographic Information System
HIES	:	Household Income and Expenditure Survey
ISRT	:	Institute of Statistical Research and Training
MICS	:	Multiple Indicator Cluster Survey
PIC	:	Programme Implementation Committee
SAE	:	Small Area Estimation
SDGs	:	Sustainable Development Goals
UN	:	United Nations
UNFPA	:	United Nations Population Fund
UNICEF	:	The United Nations Children's Fund



# 1. Introduction

## 1.1 Introduction

A child's family and home environment are crucial for their survival and development. However, outside education programs also play a vital role in giving children basic cognitive and language skills. Early childhood education forms the foundation for a high-quality basic education<sup>1</sup>. Attending these programs or preschool can improve a child's readiness for primary school. Organized learning programs for children of one year younger than the official primary school entry age, support the SDG indicator 4.2.2<sup>2</sup>. Investing in early childhood education can help bridge gaps, particularly for children with low social and economic status. Studies indicate that these investments have the highest returns for poorer children, acting as a pathway out of poverty or exclusion. Unfortunately, child marriage persists as a violation of human rights, especially in Bangladesh. The Sustainable Development Goals aim to eliminate child marriage by 2030, recognizing it as a harmful practice. Child marriage hampers girls' development, often leading to early pregnancy and social isolation. Pregnancy-related deaths are a significant cause of mortality for both married and unmarried girls aged 15 to 19<sup>3</sup>.

According to MICS, Bangladesh showed improvement in increasing participation in organized learning from 13.4% in 2012 to 77.4% in 2019. Moreover, Bangladesh achieved a reduction in women child marriage from 62% in 2012 to 53% in 2019. Despite these improvements, it is necessary to estimate the prevalence of these indicators at lower-level geographical areas so that more vulnerable areas can be targeted. This can be attempted through the technique of Small Area Estimation (SAE).

---

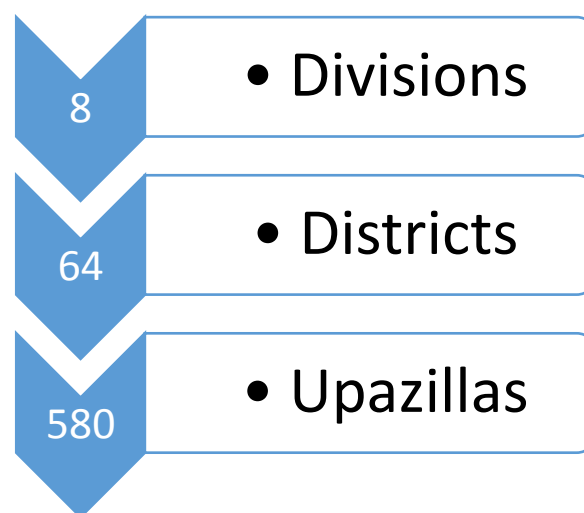
<sup>1</sup>Heckman, James J., 'Skill Formation and the Economics of Investing in Disadvantaged Children', *Science*, vol. 312, no. 5782, 30 June 2006, pp. 1900–1902.

<sup>2</sup>BANGLADESH MICS 2019 REPORT: KEY FINDINGS, Multiple Indicator Cluster Surveys (MICS), UNICEF 2021, [https://mics.unicef.org/news\\_entries/152/BANGLADESH-MICS-2019-REPORT:-KEY-FINDINGS](https://mics.unicef.org/news_entries/152/BANGLADESH-MICS-2019-REPORT:-KEY-FINDINGS) (last accessed 9 September, 2021).

<sup>3</sup>Bajracharya, A. and N. Amin, S. Poverty, marriage timing, and transitions to adulthood in Nepal: A longitudinal analysis using the Nepal livingstandards survey. Poverty, Gender, and Youth Working Paper No. 19. New York: Population Council, 2010. <http://www.popcouncil.org/uploads/pdfs/wp/pgy/019.pdf>.; Godha, D. et al. 2011. The influence of child marriage on fertility, fertility-control, and maternal health care utilization. MEASURE/EvaluationPRH Project Working paper 11-124.

## 1.2 Administrative Units of Bangladesh

Bangladesh is divided into 8 Divisions and 64 Districts, although these have only a limited role in public policy. For local government, the country is divided into 580 Upazilas (sub-districts). The diagram below outlines the three tiers of government in Bangladesh.



Some knowledge exists on the general spatial pattern of organized learning for the child age five and child marriage of age 20 to 24 in Bangladesh. The MICS 2019 estimates prevalence of these indicators for the whole country, for each division and for each district. However, the accuracy of such estimates depends crucially on the effective sample size at that level. At upazila level, the standard errors of survey-based estimates become too large to be useful because each is based on a small number of observations.

## 1.3 Literature of SAE and SAE of Participation in Organized Learning and Child Marriage

During the last decade, globally, there has been a rising demand for (objective and subjective) progress and well-being indicators at a smaller delineation<sup>4</sup>. These measures are important because they are needed by the policymakers in planning and monitoring the effectiveness of their policies and programmes. This necessity has been intensified due to the fact that all the governments are mandated to a perpetual tracking and monitoring of the indicators of the SDG towards 2031. Effective targeting for the greater needed sub regions requires a nationwide overview of these indicator at the sub-division

---

<sup>4</sup>Ida Kubiszewski, Nabeeh Zakariyya, and Diane Jarvis (2019), Subjective wellbeing at different spatial scales for individuals satisfied and dissatisfied with life, PeerJ. 7. <https://www.ncbi.nlm.nih.gov/pmc/articles/PMC6387756/>



level. Estimates need to be precise, i.e., with small standard errors, so that the areas with the greatest need are identified correctly. Therefore, to be informative and effective, the estimates of participation in organized learning and child marriage should also be chosen at the appropriate level of disaggregation. This analysis includes an investigation using Small Area Estimation (SAE) methods of how finely the estimates of participation in organized learning and child marriage may be disaggregated while maintaining an appropriate precision level.

Small Area Estimation is a mathematical and statistical method that models data collected from one or more data sources to produce estimates, such as poverty, that are more accurate at small area level than using only data collected from each small area.

In many such models, for the estimate for a particular small area, an additional accuracy is achieved by “extracting information” by using information from areas to which it is similar. As a result, combining data from different sources is a ploy used in some small area estimation techniques. New survey information, for example, maybe combined with census data to update estimates from the original census. In participation in organized learning and child marriage it is a common scenario that a statistical model is fitted to a survey data. This model is used to predict a variable whose data is not collected in the census, based on variables that are collected in both survey and census.

The World Bank method<sup>5,6</sup>, also commonly called the ELL (Elbers, Lanjouw and Lanjouw) method, is the most common methodology for small area estimation of poverty and malnutrition in developing countries. Free software PovMap<sup>7</sup> and PovMap 2<sup>8</sup> are now available from the World Bank website. Variations of the ELL method has been implemented for the World Bank in a number of other countries, including Thailand<sup>9</sup>, South Africa<sup>10</sup>, Brazil<sup>11</sup>, the Philippines<sup>12</sup>, and for the World Food Programme in Bangladesh<sup>13</sup>, Nepal<sup>14</sup>, and Cambodia<sup>15</sup>.

---

<sup>5</sup>Elbers C., Lanjouw J. and Lanjouw P. (2003) Micro-level estimation of poverty and inequality, *Econometrica*, 71, 355-364.

<sup>6</sup> Elbers C., Lanjouw J.O. and Lanjouw P. (2001) Welfare in villages and towns: micro-level estimation of poverty and inequality, unpublished manuscript, The World Bank.

<sup>7</sup> Zhao, Q. (2006). User manual for povmap. World Bank. [http://siteresources.worldbank.org/INTPGI/Resources/342674-1092157888460/Zhao\\_ManualPovMap.pdf](http://siteresources.worldbank.org/INTPGI/Resources/342674-1092157888460/Zhao_ManualPovMap.pdf)

<sup>8</sup>Zhou, Q. and Lanjouw, P. (2009) PovMap2: A User's Guide, The World Bank, <http://go.worldbank.org/QG9L6V7P20>.

<sup>9</sup>Healy A.J., Jitsuchon S. and Vajaragupta, Y. (2003) Spatially Disaggregated Estimation of Poverty and Inequality in Thailand

<sup>10</sup>Alderman H., Babita M., Demombynes G., Makhata N. and Ozler B. (2002) How low can you go? Combining census and survey data for mapping poverty in South Africa, *Journal of African Economics*, 11, 169-200.

Jones and Haslett<sup>14</sup> have conducted the initial small area estimation of poverty and malnutrition in Bangladesh in 2003 for the UN World Food Programme. In 2010, from the Household Income and Expenditure Survey (HIES)<sup>16</sup> poverty estimates were produced for the country at the division level, using poverty lines updated from the 2005 study using regional price indices. In a subsequent report by the World Bank<sup>17</sup> (World Bank, 2013), this trend in poverty reduction is discussed and contrasted with the situation in health and nutrition outcomes. The World Bank analysis provides upazila-level estimates of economic poverty indicators, but not of undernutrition indicators. The HIES 2016 did not include anthropometric measures of children under five, so cannot be used to estimate stunting and underweight prevalence. Such measures are typically available only in surveys specifically focusing on health and nutrition.

In 2023, Small Area Estimates (SAE) of stunting, underweight and wasting in children under five years of age in Bangladesh are produced at upazila level by combining survey data from the Multiple Cluster Indicator Survey 2019 (MICS) and with auxiliary data derived from the Bangladesh Population and Housing Census 2011. The models have been applied to child level census data to estimate underweight, stunting and wasting at upazila level.

According to our knowledge, small area estimates of participation in organized learning and child marriage in Bangladesh have not been produced. Therefore, our main objective is to produce and map upazila-level estimates of participation in organized learning and child marriage in Bangladesh.

---

<sup>11</sup>Elbers C., Lanjouw J.O., Lanjouw P. and Leite P.G. (2001) Poverty and Inequality in Brazil: new estimates from combined PPV-PNAD data, unpublished manuscript, The World Bank.

<sup>12</sup>Haslett, S. and Jones, G. (2005a) Estimation of Local Poverty in the Philippines, Philippines National Statistics Co-ordination Board / World Bank, November 2005.

<sup>13</sup>Jones, G. and Haslett, S. (2003) Local Estimation of Poverty and Malnutrition in Bangladesh. Bangladesh Bureau of Statistics and UN World Food Programme.

<sup>14</sup>Jones G., and Haslett, S. (2006) Small-Area Estimation of Poverty, Caloric Intake and Malnutrition in Nepal, Published: Nepal Central Bureau of Statistics / UN World Food Programme / World Bank, September 2006, 184pp, ISBN 999337018-5.

<sup>15</sup>Haslett, S., Jones, G., and Sefton, A. (2013) Small-area Estimation of Poverty and Malnutrition in Cambodia, National Institute of Statistics, Ministry of Planning, Royal Government of Cambodia and the United Nations World Food Programme, Cambodia, April 2013, ISBN 9789996375507.

<sup>16</sup>Report of the Household Income and Expenditure Survey (HIES), Bangladesh Bureau of Statistics, 2010, <http://203.112.218.65:8008/WebTestApplication/userfiles/Image/LatestReports/HIES-10.pdf>

<sup>17</sup>World Bank (2013) Bangladesh Poverty Assessment-2000-2010 Key Messages, World Bank, June 2013.

The statistical technique of small-area estimation is described in detail in the next section. Outputs, in the form of estimates at local level together with their standard errors, can be combined with Geographic Information System (GIS) location data to produce a small area estimate map for the whole country, giving a graphical summary of which areas are suffering relatively high deprivation.

#### **1.4 Measures of Participation in Organized Learning and Child Marriage**

In this study, the measures of Participation in Organized Learning are defined as the proportion of children age one year younger than the official primary school entry age at the beginning of the school year, by attendance to education, and attendance to an early childhood education programme or primary education. The child marriage is defined as the proportion women age 20-24 being married before age 18 and age 15.

#### **1.5 Scope and Objectives**

For most users, an atlas of maps is much more useful than a detailed technical report on small area estimation methodology, even if it also contains finer level tabulated detail. Our main purpose in producing maps of participation in organized learning and child marriage at upazila level is to aid the planning of development assistance programmes. They could, in addition, be helpful as a research tool, for example, by overlaying geographic, social, or economic indicators. The detailed tabulation of the upazila level estimates and maps are kept in a separated document in consideration of most of the user. This small area estimates will provide a detail perspective on geographical distribution child education and marriage.



## 2. Data and Methodology

### 2.1 Multiple Indicator Cluster Survey 2019

The Bangladesh Multiple Indicator Cluster Survey (MICS)<sup>18</sup> was carried out in 2019 by the Bangladesh Bureau of Statistics (BBS) in collaboration with UNICEF Bangladesh, as part of the Global MICS Programme. During data collection, UNFPA Bangladesh has also provided a financial resource to undertake quality assurance visits. MICS surveys measured key indicators to generate data for use in policies, programmes, and national development plans, and monitor progress towards the Sustainable Development Goals (SDGs) and other internationally agreed-upon commitments.

### 2.2 Bangladesh Population and Housing Census 2011 (Census 2011)

The independent Bangladesh has conducted population census on a decennial basis since 1974. However, the history of census in this region goes back to 1872. The fifth Population and Housing Census of Bangladesh was conducted 15 - 19 March 2011. The main objective was to collect information on housing, households and population for development planning and human resource development programmes, and economic management.

The Bangladesh Bureau of Statistics (BBS) conducted the fifth Population and Housing Census of Bangladesh in 2011 under the United Nations conceptual framework. BBS started preparatory activity at the beginning of 2009 with updating of maps and area geo-codes. The census was conducted using the house to house interview method with a modified De-Facto method where floating population was enumerated at census night. Enumeration Areas (EA) were constructed using GIS mapping. On average, each Enumeration Area (EA) consisted of about 120 households. A total of 296 thousand EAs were constructed.

---

<sup>18</sup>Bangladesh Bureau of Statistics (BBS) and UNICEF Bangladesh. 2019. Progotir Pathey, Bangladesh Multiple Indicator Cluster Survey 2019, Survey Findings Report. Dhaka, Bangladesh.  
[file:///E:/consultancy/WFP/July21/Bangladesh%202019%20MICS%20Report\\_English.pdf](file:///E:/consultancy/WFP/July21/Bangladesh%202019%20MICS%20Report_English.pdf)

### 2.3 SAE Methodology

To theoretically place the SAE methodology, we begin with a target variable  $Y$ , for which we require estimates over a range of small subpopulations, usually corresponding to small geographical areas. In this report,  $Y$  is participation in organized learning and child marriage. Auxiliary information, denoted  $X$ , representing additional variables that have been measured for the whole population, either by a census or via a GIS database, can be used under some circumstances to improve the estimates. It is customary to relate the two variables  $Y$  and  $X$  in a regression setup as

$$\log\left(\frac{P(Y_{ijk}=1)}{1-P(Y_{ijk}=1)}\right) = X_{ijk}\beta + c_i + h_{ij} + e_{ijk} \quad (3.1)$$

where  $Y_{ijk}$  represents the measurement on the  $k$ th respondent in the  $j$ th household in the  $i$ th cluster,  $X_{ijk}$  represents the measurement on the fixed effects of the auxiliary variables for the  $k$ th under-five child in the  $j$ th household in the  $i$ th cluster  $c_i$ , while the other terms  $c_i$ ,  $h_{ij}$  and  $e_{ijk}$  represent the random effects,  $c_i$  is the error term held in common by the  $i$ th cluster,  $h_{ij}$  the household level error within the cluster, and  $e_{ijk}$  the error within each sampled household. The relative importance of the three random effects can be measured by their respective variances  $\sigma_c^2$ ,  $\sigma_h^2$  and  $\sigma_e^2$ .

### 2.4 Selection of Auxiliary Data

For fitting the model (3.1), the first step is to identify and select the auxiliary data  $X$  to be used to predict the target variable  $Y$ . There could be two types of  $X$  variables: the survey variables, obtainable or derivable from the survey at household or individual level (in our case the MICS 2019), and area-level variables applying to particular geographic units that can be merged from other sources into the survey data using area codes (e.g., division, zila, upazila, union, mauza enumeration area codes). The latter includes means of census variables calculated at mauza level from the census data.

The choice of auxiliary variables should be done in a way that they are comparable in survey data and census data set. It can be done initially by examining the survey and census questionnaires. In consultation with BBS staff, a preliminary identification and matching of

common survey and census variables, was reported by Haslett, Jones and Isidro<sup>19</sup> and in Small-Area Estimation of Child Undernutrition in Bangladesh, 2023.

Common variables were then subjected to statistical checks to ensure that the corresponding survey and census variables matched statistically as well as conceptually. In the case of categorical data we compare proportions in each category: for numerical data, such as the household proportion of females, we compare the means and standard deviations.

## 2.5 Fitting the First Stage Model

The fitting of models for participation in organized learning and child marriage using the MICS 2019 data requires the design variables from the survey to produce unbiased estimates with the correct standard errors. Survey weights for the MICS 2019 data are available in the data set used for all summary computations using the MICS 2019 dataset.

Choosing an optimal model for (3.2) is a complex problem because we have a large number of possible predictor variables (25 - see Appendix A). There is also the case of the presence of multicollinearity because of the inter-relation among these variables. If interactions among the variables are considered, the number of variables becomes unusually large. Consideration of a second order interactions, if not higher order, is a requirement to take into account the district distinguishability. However, over-fitting the model in this phase of the inclusion of variables should be avoided, so the number of predictors included in the model is small compared to the number of observations in the survey. Still, there is also the problem of selecting a few variables from the large number available, which appear to be useful, only to find that an apparently strong statistical relationship in the survey data does not hold for the population as a whole. We employ automated search to avoid losing important variables and/or over-fitting the model. A step-wise selection of variables is considered for this purpose.

Some implementations of ELL methodology have fitted separate models for each stratum defined by the survey design. However, Small-Area Estimation of Child Malnutrition in Bangladesh, 2014<sup>20</sup> has employed an overall model arguing against the strata-wise fitting. The strata-wise fitting has the advantage of tailoring the model to account for the different

---

<sup>19</sup>Haslett, S., Jones, G. and Isidro, M. (2014) Potential for Small Area Estimation of Undernutrition at sub-District Level in Bangladesh: Interim Feasibility Report to UN World Food Programme, Massey University, New Zealand, February 2014.

<sup>20</sup>Bangladesh Bureau of Statistics, Small-Area Estimation of Child Undernutrition in Bangladesh, 2014.

characteristics of each stratum, but it can increase the problem of over-fitting if some strata are small. We initially chose to try for one model across the whole country, and then use regional interaction terms as necessary to allow for modelling differences between regions. This has the advantage of more stable parameter estimates and a better chance of finding genuine relationships that apply outside of the estimation data. The fitting of separate models to different strata, or areas such as districts, is related (but not identical) to the intermediate option of including explicit district-level effects in an overall model.

Appendix B contains the relevant statistics for the final models for participation in organized learning and child marriage. Sensitivity and specificity for each model is considered for model diagnostics.

## 2.6 Variance Modelling

Participation in organized learning and child marriage were modelled slightly differently to take into account the expected correlation in these measures between children and women in the same household. The variance components,  $\sigma_c^2$ ,  $\sigma_h^2$  and  $\sigma_e^2$  of the respective components can be estimated by restricted maximum likelihood (REML), for methodological details, see Laird and Ware<sup>21</sup> and Robinson<sup>22</sup>. In this study we use the simpler parametric bootstrap approach, sampling from normal distributions with variances set to the estimated variance components. There should be little difference in practice as estimation with this many levels encourages approximate normality in the residuals.

## 2.7 Simulation of Predicted Values

A total of 100 bootstraps predicted values  $Y_{ij}^b$  were produced for each child age 5 or women age 20-24 in the census for each target variable, as described in Section 3.4. For the three-level models, height-for-age, weight-for-age and weight-for-height, this was amended slightly to

$$Y_{ijk}^b = X_{ijk}\hat{\beta}^b + c_i^b + h_{ij}^b + e_{ijk}^b, \quad b=1, 2, \dots, B$$

---

<sup>21</sup>Laird, N.M. and Ware, J.H. (1982). Random-effects models for longitudinal data, *Biometrics*, 38, 963 - 974.

<sup>22</sup>Robinson, G.K. (1991) That BLUP is a good thing: the estimation of random effects, *Statistical Science*, 6, 15-51.



with the residuals at each level  $c_i^b$ ,  $h_{ij}^b$ ,  $e_{ijk}^b$  they were drawn independently from normal distributions with mean zero and variances equal to the estimated variance components from the regression analysis.

## 2.8 Production of Final Estimates

The predicted probabilities for each child and women from the census can then be assessed as being have organized learning and being child marriage and each of these measures separately grouped at the appropriate geographic level. Our main target is upazila-level small-area estimates, but we have also considered higher levels of aggregation (division, and district), compared with the direct survey estimates. For example, the estimated prevalence of stunting for small area  $R$  is:

$$OL_R^b = \sum_{\substack{i,j \in R \\ ij \in R}} I(Prob_{ij}^b > threshold) / N_R$$

where  $N_R$  is the number of eligible children in  $R$ .

The 100 bootstrap estimates for each small area, e.g.  $S_R^1, S_R^2, \dots, S_R^{100}$  were summarized by their mean and standard deviation, giving a point estimate and a standard error for each indicators at each small area.



### 3. Results for Participation in Organized Learning and Child Marriage

The direct estimates at district level participation in organized learning for the child age 5 and child marriage for the women age 20-24 available from the MICS 2019 were used to check and compare the corresponding estimates obtained from the SAE methodology. Appendix Tables C.1 and C.2 shows both sets of district estimates together with their standard errors (se). The standard errors for the direct survey estimates have been taken from the reported values in the MICS 2019 report. The standard errors for the Small Area Estimates (SAE) are the standard deviations of the 100 bootstrap estimates.

We have added a standardized difference between the two sets (direct estimate and SAE), defined as

$$Z = \frac{\text{Small area estimate} - \text{direct estimate}}{\sqrt{(\text{small area estimate se})^2 + (\text{direct estimate se})^2}}$$

If both methods are correctly estimating the same quantities, then  $Z$  should approximate a standard normal distribution.

It should be noted that there is not enough reduction in standard error from the small-area methodology at the largest levels (divisions) of aggregation, but in all cases, the SAEs are more precise (i.e. smaller standard errors) than the direct estimates. This is because the uncertainty in the direct estimates due to sampling variability is replaced by uncertainty in the estimated model for the SAEs. At the lower levels however the improvement in precision is much more dramatic.

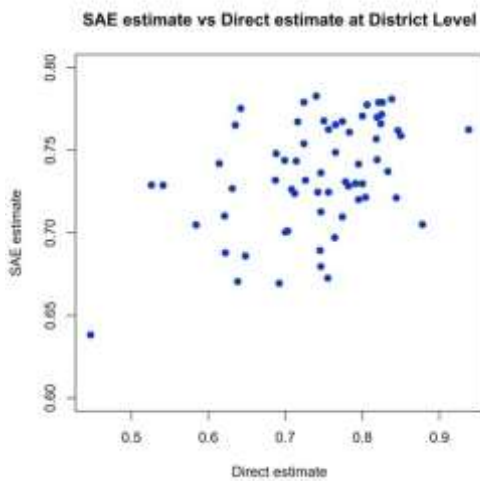
#### 3.1 Results for Participation in Organized Learning

From Table C.1, we can see that small area estimates of participation in organized learning are almost close to the direct estimates at district level with on average 6% absolute differences. The left panel of Figure 3.1 shows the scatter plot of district level small area estimates against the corresponding direct estimates. The scatter plot is shown to identify if the two sets of estimates are similar by observing the proximity of the scatter plot around the 45-degree straight line. The right panel of the graph shows straight line fit of the two sets of estimates along with the 95% confidence band. According to the Figure 3.1, all the SAE

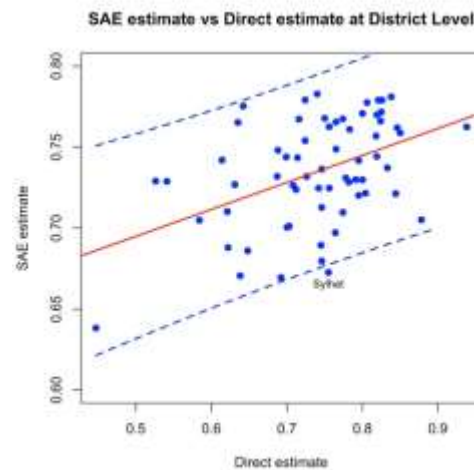
estimates for all the districts except Sylhet are within 95% confidence band of the direct estimates. The SAE of Sylhet has been identified as a little bit underestimated than the direct estimates. Overall, the SAE shows a strong level of agreement between the district level estimates with the direct estimates.

The overall agreement between the two methods can be checked in Figure 3.2, where the Z scores were plotted in a Q-Q plot that depicts a straight line indicating that the Z scores follow a near standard normal distribution. Moreover, the magnitude of the standardized values is well within three-standard deviation limits ( $<3.0$ ) except for two districts (Jashore and Noakhali).

**Figure 3.1 Scatter Plot of District Level Small Area Estimates of Participation in Organized Learning**

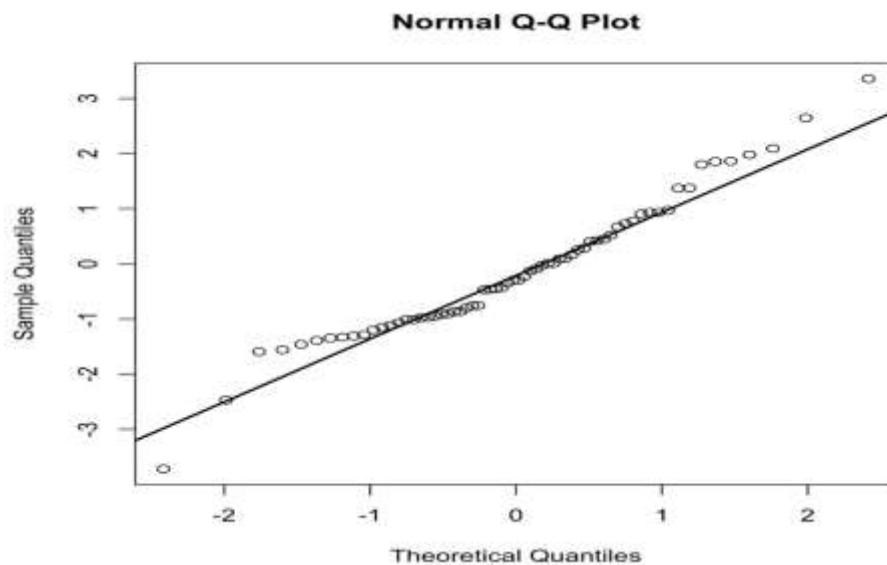


Scatter plot of district level small area estimates of participation in organized learning against the corresponding direct estimates



Straight line fit of the two sets of estimates along with the 95% confidence band

**Figure 3.2 Q-Q Plot of the Z-score Computed for Comparison Between SAE of Participation in Organized Learning for District Against the District Estimates Provided in MICS 2019**



Hence, we may conclude that the SAE for districts is as good as the direct estimates provided in the MICS 2019. For our study, the comparison is very straightforward since MICS 2019 produced district estimates with moderately acceptable sample sizes.

Table C.1 indicates that the small-area estimates of participation in organized learning have similar standard errors compared to the direct estimates from the surveys at high aggregation levels (districts).

The district-level estimates of participation in organized learning are summarized in Table 3.1. It is observed that the standard errors are quite small, with an average of only 4%. The SAE estimates of participation in organized learning ranges from 64% to 78% while the direct estimates range from 45% to 94%. A complete listing of the estimates is given in Appendix C.

**Table 3.1 Summary of District-Level Estimates of Participation in Organized Learning Prevalence**

	Minimum	Maximum	Median	Mean	Std. Deviation	95% Percentile	
						Lower	Upper
Direct Estimate	0.447	0.938	0.752	0.74	0.089	0.496	0.901
Std Error	0.03	0.059	0.049	0.049	0.006	0.031	0.059
SAE Estimate	0.638	0.783	0.734	0.735	0.033	0.657	0.782
Std Error	0.02	0.087	0.039	0.042	0.012	0.022	0.075

Table 3.2 shows the summary of the upazila level estimates of participation in organized learning. It is remarkable that even at upazila level, where standard errors would be expected to be higher, the prevalence have reasonably similar standard errors in comparison with the variability of the small area estimates between the upazila. This indicates that upazila level estimates can generally be distinguished from one another even allowing for modelling errors. The SAE estimates of the participation in organized learning have an average standard error of 4%. The SAE estimates of participation in organized learning at upazila level range from 63% to 80% while the direct estimates range from 0% to 100%.

**Table 3.2 Summary of Upazila-Level Estimates of Participation in Organized Learning Prevalence**

	Minimum	Maximum	Median	Mean	Std. Deviation	95% Percentile	
						Lower	Upper
Direct estimate	0	1	0.75	0.733	0.21	0.2	1
Std Error	0	0.5	0.133	0.142	0.101	0	0.333
SAE Estimate	0.625	0.796	0.734	0.732	0.033	0.664	0.783
Std Error	0.011	0.098	0.04	0.041	0.015	0.014	0.074

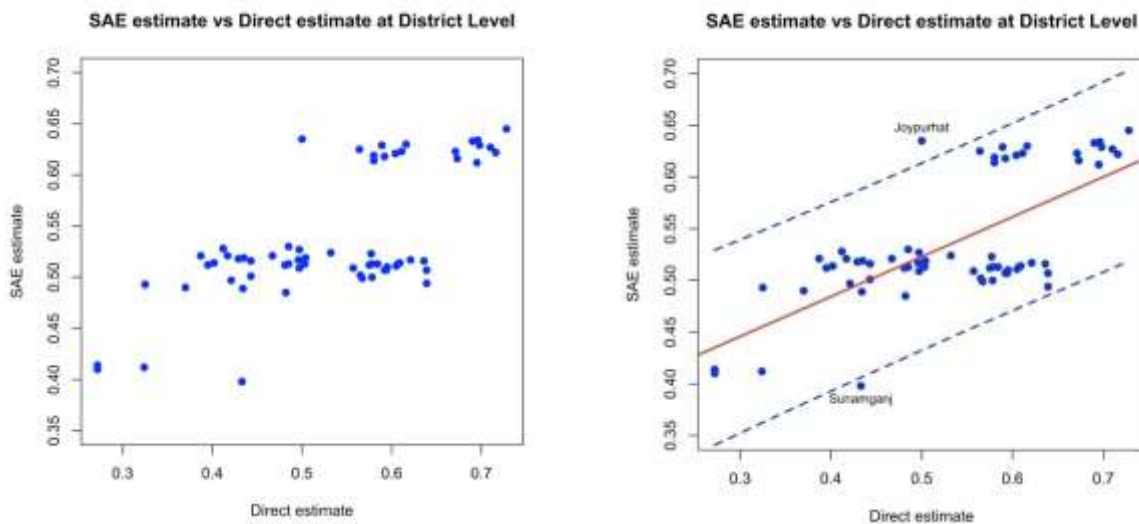
### 3.2 Results for Child Marriage of Before 18

As like the estimates of participation in organized learning, the SAE estimates of child marriage before age 18 are compared with the estimates from MICS 2019. This comparison is also listed in Table C.2. From Table C.2, we can see that the small-area estimates of child marriage before age 18 are all more or less close to the direct estimates at the district level with 7% average absolute difference. The left panel of Figure 3.3 shows the scatter plot of district level small area estimates against the corresponding direct estimates. This plot is shown to see the agreement between the two sets of estimates, and the proximity of the scatter plot around the 45-degree straight line indicates a strong agreement. The right panel of

the graph shows straight line fit of the two sets of estimates along with the 95% confidence band for the direct estimates. This figure demonstrates that all the SAE for all the districts except Joypurhat and Sunamganj are within the 95% confidence band of the direct estimates. The SAE of Kurigram is slightly under estimated and the SAE of the Sunamganj are overestimated. These again shows a strong level of agreement between the individual district estimates by the two methods.

The overall agreement between the two methods can be checked in Figure 3.4, where the Z scores were plotted in a Q-Q plot that depicts a straight line indicating that the Z scores follow a near standard normal distribution. Moreover, the magnitude of the standardized values are well within three-standard deviation limits ( $<3.0$ ) except for few districts.

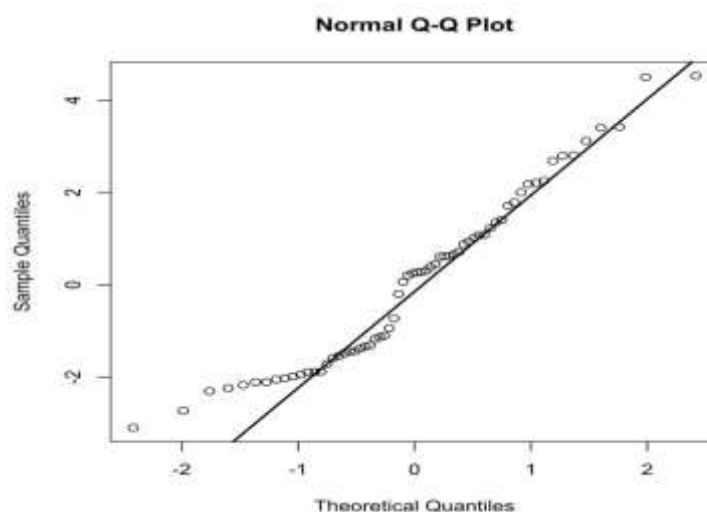
**Figure 3.3 Scatter Plot of District Level Small Area Estimates of Child Marriage of Age Before 18**



Scatter plot of district level small area estimates of Child marriage of age before 18 against the corresponding direct estimates

Straight line fit of the two sets of estimates along with the 95% confidence band

**Figure 3.4 Q-Q Plot of the Z-Score Computed for Comparison Between SAE of Child Marriage of Age Before 18 for District Against the District Estimates Provided in MICS 2019**



The district-level estimates for child marriage before age 18 are summarized in Table 3.3. The estimates seem to have smaller standard errors to those for participation in organized learning, having an average of only 2.2%. The SAE estimate of child marriage before age 18 range from 40% to 65% while the direct estimate ranges from 27% to 73%. A complete listing of the estimates is given in Appendix C.

**Table 3.3 Summary of District-Level Estimates of Child Marriage of Age Before 18 Prevalence**

	Minimum	Maximum	Median	Mean	Std. Deviation	95% Percentile	
						Lower	Upper
Direct Estimate	0.272	0.728	0.566	0.536	0.111	0.272	0.721
Std Error	0.024	0.046	0.04	0.039	0.004	0.024	0.045
SAE Estimate	0.398	0.645	0.516	0.537	0.062	0.405	0.639
Std Error	0.009	0.042	0.022	0.022	0.006	0.009	0.038

Again, at upazila level the standard errors for child marriage before age 18 prevalence are reasonably small, as shown in Table 3.4 with an average of 2.2%. The estimated prevalence of child marriage before age 18 at upazila level ranges from 38% to 68%.



**Table 3.4 Summary of Upazila-Level Estimates of Child Marriage of Age Before 18 Prevalence**

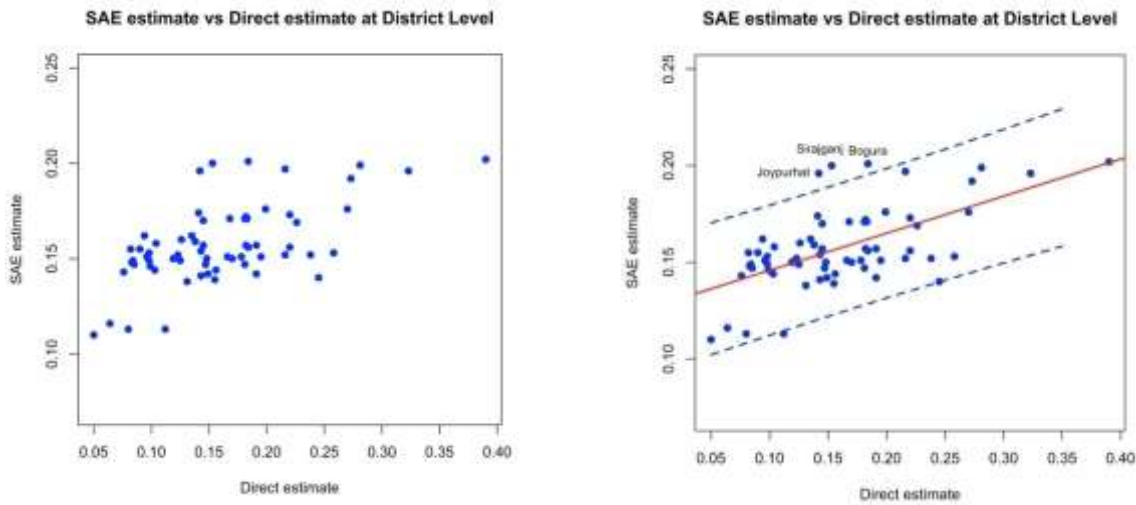
	Minimum	Maximum	Median	Mean	Std. Deviation	95% Percentile	
						Lower	Upper
Direct estimate	0	1	0.519	0.526	0.185	0.167	0.883
Std Error	0	0.5	0.118	0.131	0.058	0.061	0.289
SAE Estimate	0.383	0.657	0.517	0.533	0.06	0.404	0.637
Std Error	0.006	0.051	0.022	0.022	0.008	0.007	0.039

### 3.3 Results for Child Marriage of Age Before 15

The SAE estimates of child marriage before age 15 are also compared with the estimates from MICS 2019. This comparison is again listed in Table C.3. From Table C.3, we can see that the small-area estimates of child marriage before age 15 are all more or less close to the direct estimates at the district level with 4% average absolute difference. The left panel of Figure 3.5 shows, the scatter plot of district level small area estimates against the corresponding direct estimates. This plot is shown to see the agreement between the two sets of estimates, and the proximity of the scatter plot around the 45-degree straight line indicates a strong agreement. The right panel of the graph shows straight line fit of the two sets of estimates along with the 95% confidence band for the direct estimates. This figure demonstrates that all the SAE for all the districts except Joypurhat, Sunamganj and Bogura are within the 95% confidence band of the direct estimates. The SAE of these three districts is overestimated. These again shows a strong level of agreement between the individual district estimates by the two methods.

The overall agreement between the two methods can be checked in Figure 3.6, where the Z scores were plotted in a Q-Q plot that depicts a straight line indicating that the Z scores follow a near standard normal distribution. Moreover, the magnitude of the standardized values is well within three-standard deviation limits ( $<3.0$ ) except for three districts (Chapainawabganj, Chattogram and Sylhet).

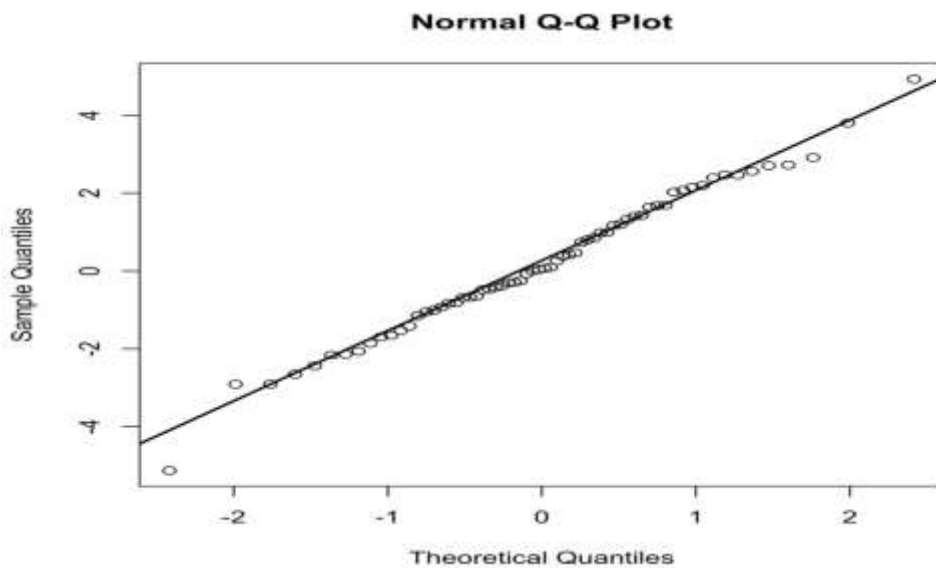
**Figure 3.5 Scatter Plot of District Level Small Area Estimates of Child Marriage of Age Before 15**



scatter plot of district level small area estimates of child marriage of age before 15 against the corresponding direct estimates

straight line fit of the two sets of estimates along with the 95% confidence band

**Figure 3.6 Q-Q Plot of the Z-Score Computed for Comparison Between SAE of Child Marriage of Age Before 15 for District Against the District Estimates Provided In MICS 2019**



The district-level estimates for child marriage before age 15 are summarized in Table 3.5. The estimates seem to have smaller standard errors to those for participation in organized learning and child marriage before age 18, having an average of only 0.9%. The SAE estimate of child marriage before age 15 at district level range from 11% to 20% while the direct estimate ranges from 5% to 39%. A complete listing of the estimates is given in Appendix C.

**Table 3.5 Summary of District-Level Estimates of Child Marriage of Age Before 15 Prevalence**

	Minimum	Maximum	Median	Mean	Std. Deviation	95% Percentile	
						Lower	Upper
Direct Estimate	0.05	0.39	0.1485	0.161	0.065	0.058	0.348
Std Error	0.013	0.042	0.028	0.028	0.006	0.013	0.04
SAE Estimate	0.11	0.202	0.153	0.157	0.021	0.112	0.201
Std Error	0.003	0.016	0.009	0.009	0.002	0.003	0.001

Again, at upazila level the standard errors for the prevalence of child marriage before age 15 are reasonably small, as shown in Table 3.6 with an average of 0.9%. The estimated prevalence of child marriage before age 15 at upazila level ranges from 7.5% to 21%.

**Table 3.6 Summary of Upazila-Level Estimates of Child Marriage of Age Before 15 prevalence**

	Minimum	Maximum	Median	Mean	Std. Deviation	95% Percentile	
						Lower	Upper
Direct estimate	0.026	0.8	0.167	0.184	0.114	0.041	0.479
Std Error	0.026	0.5	0.088	0.101	0.056	0.035	0.227
SAE Estimate	0.075	0.211	0.152	0.155	0.022	0.111	0.202
Std Error	0.003	0.02	0.111	0.009	0.003	0.004	0.016

### 3.4 Maps for Participation in Organized Learning and Child Marriage

Maps of the participation in organized learning estimates are given in Appendix D.2. Maps for child marriage before age 18 are in Appendix D.3. Maps for child marriage before age 15 are in Appendix D.4.



## 4. Conclusion and Discussion

In this report, upazila-level estimates of participation in organized learning for the child age 5 and child marriage for the women age 20-24 have been produced and mapped in Bangladesh. The small-area estimation methodology combines survey data from the Multiple Indicator Cluster Survey (MICS 2019) with auxiliary data derived from the 2011 Population and Housing Census. For participation in organized learning, a single model that includes division-level effects was adopted, proving adequate for predicting a child's participation in organized learning. Similarly, a single model for child marriage was found to be adequate for predicting a woman's likelihood of child marriage. The small-area estimates obtained for each indicator showed acceptably similar standard errors to direct estimates. Sensitivity and specificity were used as measures of model diagnostics, with good results for the model of participation in organized learning and moderate results for child marriage before age 18. However, the model for child marriage before age 15 exhibited good sensitivity but lower specificity. The small-area estimates generated in this report have low standard errors up-to the upazila level and district-level estimates generally align with those obtained by MICS 2019, with a few exceptions. For participation in organized learning in Sylhet district, the estimate was under-estimated, while for child marriage before age 18, Joypurhat was over-estimated and Sunamganj was under-estimated. The model fitted to district estimates of child marriage before age 15 appeared to over-estimate the districts of Joypurhat, Sunamganj and Bogura. It's important to note that where the model provided over or underestimations for district estimates, similar tendencies are likely in the upazila-level estimates under those districts. This is evident in the upazila estimates of participation in organized learning in the upazilas of Sylhet district, which are relatively lower. The variables used may have contributed to these lower values for the peripheral upazilas of Sylhet. Small-area estimation works best in aggregate, so when using individual-level estimates for upazilas in flagged districts for policy purposes, caution should be exercised.



## 5. Appendices

### A. Potential Auxiliary Variables

**Table A.1 Child- and Household-Level Variables in MICS 2019 and Census 2011**

Sl.	Variable name
1	Gender
2	Child age0-11 months
3	Child age12-23 months
4	Child age24-35 months
5	Child age36-47 months
6	Child age48-59 months
7	Log of household size
8	HH has electricity
9	HH head has secondary education
10	HH head married or other than married
11	Proportion of adult female in household
12	Proportion of child age 7-14 in household
13	Kitchen separate household
14	HH has electricity, urban
15	HH head married or other than married, urban
16	Proportion of adult female in household, urban
17	Proportion of household own land for agriculture in mauza
18	Proportion of household has no toilet facility in mauza
19	Proportion of child age 7-14 has literacy in mauza
20	Proportion household has pukka or semi pukka structure in mauza
21	Mother has at least secondary education
22	Poverty rate district wise
23	Aman production district wise
24	Aus production district wise
25	Boro production district wise

## B.1 Model for Participation in Organized Learning in MICS 2019

### Model for Participation in Organized Learning

	Estimate	Std Error	Z value	P-value
(Intercept)	0.937	0.108	8.654	<0.001
HH_electricity	0.327	0.101	3.254	<0.001
Proportion of child age 7-14 in household	-1.083	0.227	-4.776	<0.001
Proportion of household has no toilet facility in mauza	-1.811	0.452	-4.003	<0.001
Proportion of household has pukka or semi pukka structure in mauza	0.557	0.128	4.346	<0.001
Division_ Chattagram	-0.279	0.090	-3.112	0.002
Division_ Dhaka	-0.385	0.089	-4.349	<0.001
Division_ Rangpur	-0.200	0.110	-1.818	0.069
Division_ Sylhet	-0.491	0.120	-4.094	<0.001

n	$n_{psu}$	P	Sensitivity	Specificity	$\sigma_c^2$	$\sigma_h^2$	$\sigma_e^2$
5074	2525	9	0.9275	0.9682	0.6269	1.9176	1.1484

## B.2 Model for Child Marriage Before 18 in MICS 2019

### Model for Child Marriage Before 18

	Estimate	Std Error	Z value	P-value
(Intercept)	2.777	0.144	19.262	<0.001
Log of household size	-0.642	0.059	-10.914	<0.001
Proportion of adult female in household	-3.997	0.246	-16.230	<0.001
Proportion of household has pukka or semi pukka structure in mauza	-0.345	0.086	-4.035	<0.001
Division_ Khulna	0.569	0.070	8.104	<0.001
Division_ Rajshahi	0.709	0.082	8.674	<0.001
Division_ Sylhet	-0.493	0.090	-5.493	<0.001

n	$n_{psu}$	P	Sensitivity	Specificity	$\sigma_c^2$	$\sigma_h^2$	$\sigma_e^2$
8477	3016	7	0.5354	0.5800	0.2916	0.1100	2.1475



### B.3 Model for Child Marriage Before 15 in MICS 2019

#### Model for Child Marriage Before 15

	Estimate	Std Error	Z value	P-value
(Intercept)	0.534	0.201	2.652	<0.001
Log of household size	-0.948	0.086	-10.979	<0.001
Prop of child age 7-14 in household	5.329	0.280	19.052	<0.001
Prop of adult female in household	-3.338	0.355	-9.395	<0.001
Division_Khulna	0.338	0.078	4.362	<0.001
Division_Rajshahi	0.678	0.082	8.227	<0.001
Division_Sylhet	-0.489	0.140	-3.477	<0.001

n	$n_{psu}$	P	Sensitivity	Specificity	$\sigma_c^2$	$\sigma_h^2$	$\sigma_e^2$
8477	3016	7	0.8676	0.2593	0.2501	0.3407	3.0728

### C. Summary of Small-Area Estimates

**Table C.1 Comparison of Estimates of Participation in Organized Learning from MICS 2019**

District	Direct Estimate (%)	Std Error of the proportion	SAE Estimate (%)	Std Error of the proportion	Z value
Bagerhat	82.60	0.046	77.90	0.037	-0.797
Bandarban	44.70	0.054	63.80	0.087	1.861
Barguna	80.60	0.049	77.80	0.038	-0.460
Barishal	83.80	0.045	78.10	0.034	-1.011
Bhola	71.60	0.050	76.70	0.023	0.933
Bogura	84.60	0.045	76.20	0.040	-1.389
Brahmanbaria	79.50	0.046	74.20	0.037	-0.904
Chandpur	81.90	0.042	74.40	0.039	-1.308
Chattogram	77.80	0.032	73.10	0.023	-1.196
Chuadanga	81.80	0.052	75.70	0.036	-0.968
Cumilla	69.90	0.043	74.40	0.044	0.730
Cox's Bazar	70.00	0.049	70.00	0.045	0.007
Dhaka	77.40	0.035	71.00	0.020	-1.592
Dinajpur	74.50	0.059	68.90	0.044	-0.754
Faridpur	74.60	0.052	71.30	0.052	-0.451
Feni	61.40	0.059	74.20	0.036	1.854
Gaibandha	62.20	0.057	68.80	0.037	0.970
Gazipur	80.40	0.056	72.20	0.027	-1.329
Gopalganj	63.10	0.053	72.70	0.045	1.372
Habiganj	64.80	0.046	68.60	0.056	0.522
Joypurhat	74.60	0.057	73.60	0.049	-0.129
Jamalpur	76.50	0.052	76.50	0.038	0.008
Jashore	93.80	0.030	76.20	0.036	-3.717
Jhalokathi	82.50	0.048	77.20	0.039	-0.862
Jhenaidah	75.60	0.049	76.30	0.041	0.103
Khagrachhari	84.40	0.042	72.10	0.067	-1.557

District	Direct Estimate (%)	Std Error of the proportion	SAE Estimate (%)	Std Error of the proportion	Z value
Khulna	80.00	0.054	77.10	0.031	-0.469
Kishoreganj	58.40	0.053	70.50	0.041	1.801
Kurigram	52.60	0.058	72.90	0.050	2.645
Kushtia	81.90	0.046	77.00	0.033	-0.866
Lakshmipur	68.70	0.051	73.20	0.027	0.776
Lalmonirhat	78.20	0.047	72.80	0.032	-0.946
Madaripur	80.00	0.044	73.00	0.049	-1.067
Magura	82.40	0.042	76.60	0.042	-0.977
Manikganj	83.30	0.051	73.70	0.050	-1.343
Meherpur	72.40	0.059	75.40	0.032	0.447
Moulvibazar	69.20	0.049	66.90	0.058	-0.295
Munshiganj	68.80	0.048	74.80	0.043	0.933
Mymensingh	76.50	0.042	74.90	0.035	-0.297
Naogaon	87.80	0.047	70.50	0.052	-2.469
Narail	75.00	0.053	76.80	0.045	0.255
Narayanganj	70.80	0.057	72.60	0.032	0.282
Narsingdi	62.10	0.052	71.00	0.039	1.374
Natore	77.40	0.058	76.70	0.041	-0.092
Chapainawabganj	79.10	0.050	73.00	0.044	-0.918
Netrakona	71.40	0.050	74.30	0.051	0.411
Nilphamari	76.40	0.045	69.70	0.026	-1.285
Noakhali	54.10	0.048	72.90	0.029	3.356
Pabna	74.00	0.052	78.30	0.037	0.673
Panchagarh	79.50	0.045	72.00	0.047	-1.150
Patuakhali	64.20	0.054	77.50	0.034	2.093
Pirojpur	82.10	0.044	77.90	0.034	-0.759
Rajshahi	85.00	0.046	75.90	0.042	-1.459
Rajbari	71.20	0.053	72.40	0.049	0.164
Rangamati	74.20	0.046	72.50	0.063	-0.223
Rangpur	70.30	0.053	70.10	0.038	-0.029
Shariatpur	75.60	0.049	72.50	0.054	-0.430
Satkhira	78.30	0.050	76.10	0.039	-0.348
Sirajganj	72.40	0.048	77.90	0.037	0.906
Sherpur	63.50	0.056	76.50	0.034	1.979
Sunamganj	63.80	0.045	67.10	0.064	0.418
Sylhet	75.50	0.043	67.30	0.060	-1.114
Tangail	72.60	0.049	73.20	0.041	0.091
Thakurgaon	74.60	0.054	68.00	0.038	-1.008

**Table C.2 Comparison of Estimates of Child Marriage Before 18 from MICS 2019**

District	Direct Estimate (%)	Std Error of the proportion	SAE Estimate (%)	Std Error of the proportion	Z value
Bagerhat	69.50	0.038	61.20	0.022	-1.890
Bandarban	32.50	0.043	49.30	0.042	2.795
Barguna	60.90	0.042	51.40	0.023	-1.984
Barishal	49.60	0.042	51.70	0.021	0.447
Bhola	60.50	0.040	51.10	0.013	-2.235
Bogura	69.60	0.041	63.40	0.022	-1.332
Brahmanbaria	46.70	0.039	52.10	0.020	1.232
Chandpur	49.70	0.040	52.70	0.021	0.664
Chattogram	39.50	0.024	51.20	0.010	4.500
Chuadanga	60.40	0.039	62.10	0.019	0.392
Cumilla	53.20	0.033	52.40	0.024	-0.196
Cox's Bazar	37.00	0.036	49.00	0.023	2.809
Dhaka	41.20	0.024	52.80	0.009	4.526
Dinajpur	59.20	0.039	50.70	0.023	-1.877
Faridpur	57.70	0.041	52.30	0.027	-1.100
Feni	38.70	0.038	52.10	0.020	3.121
Gaibandha	62.10	0.044	51.70	0.019	-2.170
Gazipur	59.50	0.040	51.00	0.011	-2.049
Gopalganj	48.10	0.043	51.20	0.025	0.623
Habiganj	32.40	0.033	41.20	0.029	2.003
Joypurhat	50.00	0.043	63.50	0.026	2.687
Jamalpur	58.40	0.044	51.30	0.022	-1.443
Jashore	56.40	0.041	62.50	0.019	1.350
Jhalokathi	48.20	0.043	48.50	0.023	0.062
Jhenaidah	67.30	0.037	61.60	0.023	-1.308
Khagrachhari	42.10	0.040	49.70	0.036	1.412
Khulna	58.00	0.041	61.90	0.017	0.879
Kishoreganj	40.20	0.045	51.40	0.021	2.255
Kurigram	50.30	0.040	51.30	0.027	0.207
Kushtia	59.20	0.038	61.80	0.018	0.618
Lakshmipur	48.50	0.039	53.00	0.015	1.077
Lalmonirhat	56.70	0.039	49.90	0.018	-1.583
Madaripur	43.50	0.041	51.90	0.027	1.711
Magura	58.00	0.041	61.40	0.024	0.716
Manikganj	63.60	0.044	51.60	0.028	-2.301
Meherpur	58.90	0.039	62.90	0.017	0.940
Moulvibazar	27.20	0.030	41.40	0.029	3.403
Munshiganj	48.50	0.039	51.30	0.024	0.611
Mymensingh	49.70	0.041	50.90	0.018	0.268

District	Direct Estimate (%)	Std Error of the proportion	SAE Estimate (%)	Std Error of the proportion	Z value
Naogaon	71.00	0.041	62.70	0.026	-1.710
Narail	71.60	0.037	62.20	0.025	-2.105
Narayanganj	44.30	0.038	51.60	0.015	1.787
Narsingdi	41.70	0.043	52.10	0.019	2.212
Natore	69.00	0.043	63.30	0.023	-1.169
Chapainawabganj	72.80	0.032	64.50	0.023	-2.106
Netrakona	44.30	0.044	50.10	0.030	1.089
Nilphamari	57.80	0.038	50.00	0.013	-1.942
Noakhali	42.90	0.038	51.80	0.015	2.179
Pabna	61.60	0.040	63.00	0.021	0.310
Panchagarh	63.90	0.039	49.40	0.026	-3.094
Patuakhali	57.80	0.040	51.30	0.021	-1.439
Pirojpur	57.50	0.041	51.20	0.020	-1.381
Rajshahi	69.80	0.039	62.90	0.022	-1.541
Rajbari	55.70	0.044	50.90	0.026	-0.939
Rangamati	43.40	0.043	48.90	0.033	1.015
Rangpur	59.40	0.042	50.70	0.019	-1.887
Shariatpur	50.40	0.046	51.90	0.029	0.276
Satkhira	67.10	0.037	62.30	0.021	-1.128
Sirajganj	61.10	0.043	62.30	0.021	0.251
Sherpur	63.90	0.044	50.70	0.020	-2.731
Sunamganj	43.30	0.036	39.80	0.032	-0.727
Sylhet	27.20	0.028	41.00	0.029	3.423
Tangail	60.70	0.041	51.30	0.022	-2.020
Thakurgaon	56.50	0.038	50.20	0.019	-1.483

**Table C.3 Comparison of Estimates of Child Marriage Before 15 Prevalence from MICS 2019**

District	Direct Estimate (%)	Std Error of the proportion	SAE Estimate (%)	Std Error of the proportion	Z value
Bagerhat	19.90	0.033	17.60	0.009	-0.672
Bandarban	8.30	0.025	14.80	0.016	2.190
Barguna	12.30	0.028	15.20	0.009	0.986
Barishal	18.40	0.033	15.60	0.008	-0.825
Bhola	19.10	0.032	15.70	0.005	-1.050
Bogura	18.40	0.035	20.10	0.011	0.463
Brahmanbaria	14.50	0.028	15.70	0.008	0.412
Chandpur	13.80	0.027	15.90	0.009	0.738
Chattogram	7.60	0.013	14.30	0.004	4.926
Chuadanga	14.50	0.028	17.00	0.009	0.850
Cumilla	10.40	0.020	15.80	0.009	2.462
Cox's Bazar	9.80	0.022	14.90	0.009	2.146
Dhaka	15.50	0.017	13.90	0.003	-0.927
Dinajpur	19.10	0.031	14.20	0.008	-1.531
Faridpur	14.80	0.029	15.00	0.010	0.065
Feni	11.90	0.025	15.00	0.007	1.194
Gaibandha	25.80	0.039	15.30	0.007	-2.650
Gazipur	13.10	0.027	13.80	0.004	0.256
Gopalganj	9.60	0.025	15.10	0.009	2.070
Habiganj	6.40	0.017	11.60	0.009	2.703
Joypurhat	14.20	0.030	19.60	0.012	1.671
Jamalpur	21.60	0.037	15.20	0.008	-1.691
Jashore	18.10	0.032	17.10	0.009	-0.301
Jhalokathi	9.40	0.025	16.20	0.009	2.559
Jhenaidah	22.60	0.033	16.90	0.010	-1.653
Khagrachhari	12.50	0.027	14.90	0.013	0.801
Khulna	16.80	0.031	17.10	0.007	0.094
Kishoreganj	9.00	0.026	15.50	0.008	2.389
Kurigram	22.00	0.033	15.60	0.010	-1.856
Kushtia	18.30	0.030	17.10	0.008	-0.386
Lakshmipur	13.50	0.027	16.20	0.006	0.976
Lalmonirhat	8.50	0.022	14.70	0.006	2.719
Madaripur	8.20	0.023	15.50	0.010	2.911
Magura	18.20	0.032	17.20	0.010	-0.298
Manikganj	19.50	0.037	15.10	0.010	-1.148
Meherpur	14.10	0.027	17.40	0.008	1.172
Moulvibazar	8.00	0.018	11.30	0.009	1.640
Munshiganj	14.70	0.028	14.70	0.009	0.000

District	Direct Estimate (%)	Std Error of the proportion	SAE Estimate (%)	Std Error of the proportion	Z value
Mymensingh	17.00	0.030	15.00	0.007	-0.649
Naogaon	32.30	0.042	19.60	0.012	-2.907
Narail	27.00	0.037	17.60	0.011	-2.435
Narayanganj	14.90	0.027	14.20	0.006	-0.253
Narsingdi	9.80	0.026	15.30	0.008	2.022
Natore	21.60	0.038	19.70	0.011	-0.480
Chapainawabganj	39.00	0.035	20.20	0.011	-5.124
Netrakona	8.40	0.024	14.90	0.011	2.462
Nilphamari	15.60	0.028	14.40	0.005	-0.422
Noakhali	12.60	0.025	16.00	0.006	1.322
Pabna	28.10	0.037	19.90	0.010	-2.139
Panchagarh	24.50	0.035	14.00	0.009	-2.905
Patuakhali	14.30	0.028	15.40	0.008	0.378
Pirojpur	17.80	0.032	15.10	0.008	-0.819
Rajshahi	27.30	0.038	19.20	0.010	-2.061
Rajbari	9.90	0.026	14.60	0.010	1.687
Rangamati	10.30	0.026	14.40	0.012	1.432
Rangpur	18.10	0.033	14.70	0.007	-1.008
Shariatpur	18.20	0.035	15.70	0.011	-0.681
Satkhira	22.00	0.032	17.30	0.009	-1.414
Sirajganj	15.30	0.032	20.00	0.010	1.402
Sherpur	23.80	0.039	15.20	0.008	-2.160
Sunamganj	11.20	0.023	11.30	0.010	0.040
Sylhet	5.00	0.013	11.00	0.009	3.795
Tangail	16.60	0.031	15.10	0.008	-0.469
Thakurgaon	14.30	0.027	14.10	0.007	-0.072

**Table C.4 Comparison of Estimates of Participation in Organized Learning in MICS 2019 at Upazila Level**

District	Upazila Code	Upazila_Name	SAE Estimate (%)	Std Error of the proportion
Barguna	100409	Amtali	77.40	0.040
Barguna	100419	Bamna	77.90	0.039
Barguna	100428	Bargunasadar	78.00	0.042
Barguna	100447	Betagi	78.00	0.037
Barguna	100485	Patharghata	77.90	0.030
Barguna	100490	Taltali	77.20	0.046
Barishal	100602	Agailjhara	78.20	0.037
Barishal	100603	Babuganj	78.70	0.038
Barishal	100607	Bakerganj	77.90	0.034
Barishal	100610	Banaripara	78.10	0.035
Barishal	100632	Gaurnadi	78.50	0.039
Barishal	100636	Hizla	77.20	0.033
Barishal	100651	Barishalsadar	79.60	0.034
Barishal	100662	Mehendiganj	76.70	0.032
Barishal	100669	Muladi	77.60	0.036
Barishal	100694	Wazirpur	78.30	0.031
Bhola	100918	Bhola Sadar	77.30	0.024
Bhola	100921	Borhanuddin	76.70	0.024
Bhola	100925	Char Fasson	76.40	0.020
Bhola	100929	Daulat Khan	77.00	0.021
Bhola	100954	Lalmohan	76.60	0.025
Bhola	100965	Manpura	76.30	0.029
Bhola	100991	Tazumuddin	76.50	0.031
Jhalokati	104240	Jhalokathisadar	77.60	0.047
Jhalokati	104243	Kathalia	77.00	0.030
Jhalokati	104273	Nalchity	77.00	0.045
Jhalokati	104284	Rajapur	76.90	0.033
Patuakhali	107838	Bauphal	77.70	0.030
Patuakhali	107852	Dashmina	76.90	0.030
Patuakhali	107855	Dumki	77.90	0.027
Patuakhali	107857	Galachipa	77.20	0.035
Patuakhali	107866	Kalapara	77.60	0.045
Patuakhali	107876	Mirzaganj	77.90	0.035
Patuakhali	107895	Patuakhali Sadar	77.80	0.033
Patuakhali	107897	Rangabali	77.30	0.040
Pirojpur	107914	Bhandaria	77.80	0.025
Pirojpur	107947	Kawkhali	78.10	0.041
Pirojpur	107958	Mathbaria	77.80	0.031

District	Upazila Code	Upazila_Name	SAE Estimate (%)	Std Error of the proportion
Pirojpur	107976	Nazirpur	77.30	0.044
Pirojpur	107980	Pirojpur Sadar	78.40	0.038
Pirojpur	107987	Nesarabad	78.60	0.032
Pirojpur	107990	Indurkani	77.20	0.041
Bandarban	200304	Alikadam	63.70	0.081
Bandarban	200314	Bandarbansadar	65.50	0.085
Bandarban	200351	Lama	63.90	0.085
Bandarban	200373	Naikhongchhari	62.50	0.092
Bandarban	200389	Rowangchhari	63.60	0.097
Bandarban	200391	Ruma	63.90	0.098
Bandarban	200395	Thanchi	62.90	0.096
Brahmanbaria	201202	Akhaura	74.50	0.049
Brahmanbaria	201204	Banchharampur	74.50	0.034
Brahmanbaria	201207	Bijoynagar	73.50	0.049
Brahmanbaria	201213	Brahmanbariasadar	75.00	0.035
Brahmanbaria	201233	Ashuganj	74.90	0.024
Brahmanbaria	201263	Kasba	74.50	0.046
Brahmanbaria	201285	Nabinagar	73.80	0.037
Brahmanbaria	201290	Nasirnagar	72.40	0.034
Brahmanbaria	201294	Sarail	74.60	0.035
Chandpur	201322	Chandpur Sadar	75.10	0.032
Chandpur	201345	Faridganj	74.10	0.035
Chandpur	201347	Haimchar	73.20	0.039
Chandpur	201349	Hajiganj	74.60	0.038
Chandpur	201358	Kachua	74.30	0.042
Chandpur	201376	Matlab Dakshin	74.20	0.039
Chandpur	201379	Matlab Uttar	74.30	0.052
Chandpur	201395	Shahrasti	74.70	0.046
Chattogram	201502	Akbarshah	74.40	0.018
Chattogram	201504	Anowara	72.30	0.030
Chattogram	201506	Bayejidbostami	74.50	0.022
Chattogram	201508	Banshkhali	70.30	0.025
Chattogram	201510	Bakalia	73.70	0.013
Chattogram	201512	Boalkhali	74.00	0.020
Chattogram	201516	Chalkbazar	73.60	0.011
Chattogram	201518	Chandanaish	73.10	0.027
Chattogram	201519	Chandgaon	74.00	0.014
Chattogram	201520	Chattogram Port	73.80	0.014
Chattogram	201528	Double Mooring	74.70	0.019
Chattogram	201531	Epz	74.20	0.017



District	Upazila Code	Upazila_Name	SAE Estimate (%)	Std Error of the proportion
Chattogram	201533	Fatikchhari	72.50	0.036
Chattogram	201535	Halishahar	74.70	0.023
Chattogram	201537	Hathazari	73.70	0.019
Chattogram	201539	Karnaphuli	73.20	0.019
Chattogram	201541	Kotwali	74.20	0.017
Chattogram	201543	Khulshi	74.80	0.024
Chattogram	201547	Lohagara	71.90	0.023
Chattogram	201553	Mirsharai	72.80	0.040
Chattogram	201555	Pahartali	74.20	0.014
Chattogram	201557	Panchlaish	73.60	0.013
Chattogram	201561	Patiya	74.10	0.030
Chattogram	201565	Patenga	73.40	0.013
Chattogram	201570	Rangunia	73.50	0.040
Chattogram	201574	Raozan	74.40	0.025
Chattogram	201577	Sadarghat	74.70	0.021
Chattogram	201578	Sandwip	70.60	0.019
Chattogram	201582	Satkania	72.80	0.028
Chattogram	201586	Sitakunda	73.80	0.028
Cumilla	201909	Barura	73.90	0.047
Cumilla	201915	Brahmanpara	73.90	0.033
Cumilla	201918	Burichang	75.10	0.038
Cumilla	201927	Chandina	74.10	0.043
Cumilla	201931	Chauddagram	74.90	0.053
Cumilla	201933	Sadar Dakshin	75.60	0.052
Cumilla	201936	Daudkandi	75.10	0.050
Cumilla	201940	Debidwar	73.80	0.039
Cumilla	201954	Homna	75.00	0.048
Cumilla	201967	Adarsha Sadar	75.70	0.034
Cumilla	201972	Laksam	74.50	0.046
Cumilla	201973	Lalmal	75.40	0.054
Cumilla	201974	Manoharganj	73.50	0.049
Cumilla	201975	Meghna	74.80	0.051
Cumilla	201981	Muradnagar	73.40	0.040
Cumilla	201987	Nangalkot	73.20	0.049
Cumilla	201994	Titas	74.90	0.047
Cox's Bazar	202216	Chakaria	70.50	0.042
Cox's Bazar	202224	Cox's Bazar Sadar	71.20	0.046
Cox's Bazar	202232	Eidgaon	NA	NA
Cox's Bazar	202245	Kutubdia	NA	NA
Cox's Bazar	202249	Maheshkhali	69.90	0.046

District	Upazila Code	Upazila_Name	SAE Estimate (%)	Std Error of the proportion
Cox's Bazar	202256	Pekua	69.30	0.058
Cox's Bazar	202266	Ramu	69.70	0.039
Cox's Bazar	202290	Teknaf	69.70	0.049
Cox's Bazar	202294	Ukhiya	69.50	0.039
Feni	203014	Chhagalnaiya	74.70	0.037
Feni	203025	Daganbhuiyan	74.50	0.039
Feni	203029	Fenisadar	74.70	0.032
Feni	203041	Fulgazi	74.60	0.046
Feni	203051	Parshuram	74.00	0.048
Feni	203094	Sonagazi	72.60	0.034
Khagrachhari	204643	Dighinala	72.30	0.061
Khagrachhari	204647	Guimara	71.30	0.078
Khagrachhari	204649	Khagrachharisadar	73.30	0.065
Khagrachhari	204661	Lakshmichhari	71.70	0.082
Khagrachhari	204665	Mahalchhari	72.00	0.075
Khagrachhari	204667	Manikchhari	71.90	0.061
Khagrachhari	204670	Matiranga	71.50	0.072
Khagrachhari	204677	Panchhari	71.90	0.068
Khagrachhari	204680	Ramgarh	72.50	0.060
Lakshmipur	205133	Kamalnagar	71.80	0.020
Lakshmipur	205143	Lakshmipursadar	73.80	0.031
Lakshmipur	205158	Roypur	73.50	0.028
Lakshmipur	205165	Ramganj	74.50	0.039
Lakshmipur	205173	Ramgati	72.00	0.022
Noakhali	207507	Begumganj	74.20	0.030
Noakhali	207510	Chatkhil	74.80	0.040
Noakhali	207521	Companiganj	73.60	0.024
Noakhali	207536	Hatiya	71.10	0.022
Noakhali	207547	Kabirhat	72.20	0.036
Noakhali	207580	Senbagh	74.40	0.033
Noakhali	207583	Sonaimuri	74.40	0.037
Noakhali	207585	Subarnachar	70.90	0.026
Noakhali	207587	Noakhali Sadar	72.70	0.031
Rangamati	208407	Baghaichhari	72.00	0.079
Rangamati	208421	Barkal	72.00	0.074
Rangamati	208425	Kawkhali	72.60	0.067
Rangamati	208429	Belaichhari	71.80	0.057
Rangamati	208436	Kaptai	74.00	0.060
Rangamati	208447	Juraichhari	72.60	0.081
Rangamati	208458	Langadu	70.80	0.053

District	Upazila Code	Upazila Name	SAE Estimate (%)	Std Error of the proportion
Rangamati	208475	Naniarchar	72.30	0.074
Rangamati	208478	Rajasthali	72.80	0.070
Rangamati	208487	Rangamati Sadar	74.20	0.049
Dhaka	302602	Adabor	70.70	0.019
Dhaka	302604	Badda	71.20	0.020
Dhaka	302605	Bangshal	71.40	0.028
Dhaka	302606	Biman Bandar	70.60	0.052
Dhaka	302607	Banani	70.80	0.018
Dhaka	302608	Cantonment	70.70	0.015
Dhaka	302609	Chak Bazar	71.10	0.028
Dhaka	302610	Dakshinkhan	71.00	0.013
Dhaka	302611	Darus Salam	70.80	0.018
Dhaka	302612	Demra	70.70	0.015
Dhaka	302614	Dhamrai	71.20	0.051
Dhaka	302616	Dhanmondi	70.90	0.017
Dhaka	302618	Dohar	70.50	0.045
Dhaka	302621	Bhasantek	70.40	0.016
Dhaka	302622	Bhatara	70.90	0.015
Dhaka	302624	Gendaria	71.20	0.021
Dhaka	302626	Gulshan	71.30	0.039
Dhaka	302627	Hatirjheel	70.90	0.015
Dhaka	302628	Hazaribagh	70.90	0.022
Dhaka	302629	Jatrabari	70.80	0.015
Dhaka	302630	Kafrul	70.80	0.012
Dhaka	302632	Kadamtali	70.90	0.017
Dhaka	302633	Kalabagan	71.00	0.022
Dhaka	302634	Kamrangir Char	70.50	0.017
Dhaka	302636	Khilgaon	70.90	0.013
Dhaka	302637	Khilkhet	71.30	0.030
Dhaka	302638	Keraniganj	71.20	0.034
Dhaka	302640	Kotwali	72.10	0.046
Dhaka	302642	Lalbagh	70.90	0.019
Dhaka	302648	Mirpur	71.00	0.012
Dhaka	302650	Mohammadpur	70.60	0.016
Dhaka	302654	Motijheel	70.80	0.023
Dhaka	302657	Mugda	70.70	0.013
Dhaka	302662	Nawabganj	71.10	0.054
Dhaka	302663	New Market	70.40	0.026
Dhaka	302664	Pallabi	71.20	0.019
Dhaka	302665	Paltan	70.90	0.026

District	Upazila Code	Upazila_Name	SAE Estimate (%)	Std Error of the proportion
Dhaka	302666	Ramna	70.70	0.019
Dhaka	302667	Rampura	71.00	0.017
Dhaka	302668	Sabujbagh	71.20	0.020
Dhaka	302670	Rupnagar	70.80	0.014
Dhaka	302672	Savar	71.40	0.025
Dhaka	302673	Shahjahanpur	70.70	0.019
Dhaka	302674	Shah Ali	71.30	0.024
Dhaka	302675	Shahbagh	70.90	0.033
Dhaka	302676	Shyampur	70.70	0.017
Dhaka	302680	Sher-E-Bangla Nagar	70.70	0.016
Dhaka	302688	Sutrapur	71.40	0.033
Dhaka	302690	Tejgaon	70.70	0.016
Dhaka	302692	Tejgaon Ind. Area	70.80	0.019
Dhaka	302693	Turag	70.60	0.023
Dhaka	302694	Uttrapashchim	70.10	0.020
Dhaka	302695	Uttara	70.70	0.029
Dhaka	302696	Uttar Khan	71.40	0.037
Dhaka	302698	Wari	71.50	0.029
Faridpur	302903	Alfadanga	71.00	0.052
Faridpur	302910	Bhanga	71.50	0.051
Faridpur	302918	Boalmari	70.40	0.056
Faridpur	302921	Char Bhadrasan	71.40	0.058
Faridpur	302947	Faridpur Sadar	72.40	0.043
Faridpur	302956	Madhukhali	71.10	0.059
Faridpur	302962	Nagarkanda	70.90	0.053
Faridpur	302984	Sadarpur	71.10	0.063
Faridpur	302990	Saltha	70.40	0.055
Gazipur	303315	Basan	73.10	0.026
Gazipur	303318	Gachha	72.20	0.017
Gazipur	303330	Gazipur Sadar	72.60	0.027
Gazipur	303332	Kaliakair	72.80	0.037
Gazipur	303334	Kaliganj	72.40	0.041
Gazipur	303336	Kapasia	70.90	0.041
Gazipur	303340	Kashimpur	73.00	0.029
Gazipur	303345	Konabari	72.20	0.016
Gazipur	303350	Pubail	72.80	0.044
Gazipur	303374	Joydebpur	72.30	0.021
Gazipur	303386	Sreepur	71.70	0.030
Gazipur	303390	Tongipashchim	72.10	0.017
Gazipur	303393	Tongipurba	71.90	0.011

District	Upazila Code	Upazila Name	SAE Estimate (%)	Std Error of the proportion
Gopalganj	303532	Gopalganj Sadar	73.20	0.042
Gopalganj	303543	Kashiani	72.60	0.043
Gopalganj	303551	Kotalipara	72.10	0.050
Gopalganj	303558	Muksudpur	72.40	0.050
Gopalganj	303591	Tungipara	73.20	0.045
Kishoregonj	304802	Austagram	70.20	0.033
Kishoregonj	304806	Bajitpur	70.60	0.046
Kishoregonj	304811	Bhairab	72.10	0.034
Kishoregonj	304827	Hossainpur	69.90	0.043
Kishoregonj	304833	Itna	70.30	0.040
Kishoregonj	304842	Karimganj	70.40	0.045
Kishoregonj	304845	Katiadi	70.10	0.041
Kishoregonj	304849	Kishoreganj Sadar	70.60	0.044
Kishoregonj	304854	Kuliar Char	70.10	0.044
Kishoregonj	304859	Mithamain	69.70	0.051
Kishoregonj	304876	Nikli	70.60	0.038
Kishoregonj	304879	Pakundia	70.10	0.042
Kishoregonj	304892	Tarail	70.90	0.041
Madaripur	305418	Dasar	Na	Na
Madaripur	305440	Kalkini	72.70	0.047
Madaripur	305454	Madaripur Sadar	Na	Na
Madaripur	305480	Rajoir	73.60	0.048
Madaripur	305487	Shibchar	72.30	0.062
Manikganj	305610	Daulatpur	72.30	0.047
Manikganj	305622	Ghior	74.00	0.051
Manikganj	305628	Harirampur	73.40	0.056
Manikganj	305646	Manikganjsadar	74.40	0.051
Manikganj	305670	Saturia	74.10	0.051
Manikganj	305678	Shibalaya	73.60	0.058
Manikganj	305682	Singair	74.00	0.045
Munshiganj	305924	Gazaria	74.30	0.048
Munshiganj	305944	Lohajang	74.30	0.040
Munshiganj	305956	Munshiganjsadar	75.10	0.045
Munshiganj	305974	Serajdikhan	74.80	0.044
Munshiganj	305984	Sreenagar	74.90	0.036
Munshiganj	305994	Tongibari	74.80	0.046
Narayanganj	306702	Araihazar	72.30	0.049
Narayanganj	306704	Sonargaon	73.40	0.050
Narayanganj	306706	Bandar	73.40	0.039
Narayanganj	306758	Narayanganj Sadar	72.30	0.020

District	Upazila Code	Upazila_Name	SAE Estimate (%)	Std Error of the proportion
Narayanganj	306768	Rupganj	72.70	0.033
Narsingdi	306807	Belabo	70.30	0.038
Narsingdi	306852	Manohardi	70.70	0.041
Narsingdi	306860	Narsingdisadar	71.80	0.035
Narsingdi	306863	Palash	72.60	0.039
Narsingdi	306864	Roypura	69.90	0.040
Narsingdi	306876	Shibpur	71.50	0.046
Rajbari	308207	Baliakandi	72.20	0.057
Rajbari	308229	Goalanda	72.40	0.063
Rajbari	308247	Kalukhali	72.20	0.050
Rajbari	308273	Pangsha	72.10	0.046
Rajbari	308276	Rajbari Sadar	72.80	0.043
Shariatpur	308614	Bhedarganj	72.30	0.063
Shariatpur	308625	Damudya	72.80	0.053
Shariatpur	308636	Gosairhat	71.60	0.054
Shariatpur	308665	Naria	72.90	0.049
Shariatpur	308669	Shariatpursadar	72.90	0.047
Shariatpur	308694	Zajira	72.50	0.059
Tangail	309309	Basail	74.10	0.041
Tangail	309319	Bhuapur	72.40	0.043
Tangail	309323	Delduar	73.60	0.045
Tangail	309325	Dhanbari	72.50	0.042
Tangail	309328	Ghatail	73.50	0.049
Tangail	309338	Gopalpur	73.10	0.043
Tangail	309347	Kalihati	73.60	0.042
Tangail	309357	Madhupur	72.30	0.039
Tangail	309366	Mirzapur	73.50	0.037
Tangail	309376	Nagarpur	71.80	0.048
Tangail	309385	Sakhipur	74.00	0.033
Tangail	309395	Tangail Sadar	73.40	0.039
Bagerhat	400108	Bagerhat Sadar	79.10	0.042
Bagerhat	400114	Chitalmari	77.30	0.045
Bagerhat	400134	Fakirhat	78.90	0.033
Bagerhat	400138	Kachua	77.80	0.049
Bagerhat	400156	Mollahat	77.70	0.037
Bagerhat	400158	Mongla	78.40	0.036
Bagerhat	400160	Morrelganj	77.30	0.035
Bagerhat	400173	Rampal	78.00	0.040
Bagerhat	400177	Sarankhola	76.90	0.028
Chuadanga	401807	Alamdanga	75.70	0.040

District	Upazila Code	Upazila Name	SAE Estimate (%)	Std Error of the proportion
Chuadanga	401823	Chuadangasadar	75.90	0.036
Chuadanga	401831	Damurhuda	75.60	0.033
Chuadanga	401855	Jibannagar	75.40	0.036
Jashore	404104	Abhaynagar	76.70	0.029
Jashore	404109	Bagherpara	75.70	0.047
Jashore	404111	Chaugachha	76.00	0.042
Jashore	404123	Jhikargachha	76.40	0.041
Jashore	404138	Keshabpur	75.50	0.041
Jashore	404147	Jashoresadar	76.80	0.033
Jashore	404161	Manirampur	75.90	0.036
Jashore	404190	Sharsha	76.20	0.036
Jhenaidah	404414	Harinakunda	75.90	0.040
Jhenaidah	404419	Jhenaidahsadar	76.40	0.041
Jhenaidah	404433	Kaliganj	76.20	0.042
Jhenaidah	404442	Kotchhandpur	77.00	0.041
Jhenaidah	404471	Maheshpur	76.60	0.039
Jhenaidah	404480	Shailkupa	75.70	0.044
Khulna	404712	Batiaghata	76.50	0.045
Khulna	404717	Dacope	75.80	0.040
Khulna	404721	Daulatpur	78.40	0.026
Khulna	404730	Dumuria	77.20	0.035
Khulna	404740	Dighalia	76.50	0.027
Khulna	404745	Khalishpur	78.20	0.023
Khulna	404748	Khan Jahan Ali	77.60	0.023
Khulna	404751	Khulna Sadar	78.20	0.022
Khulna	404753	Koyra	75.50	0.041
Khulna	404764	Paikgachha	76.60	0.041
Khulna	404769	Phultala	77.70	0.028
Khulna	404775	Rupsa	77.60	0.030
Khulna	404785	Sonadanga	78.50	0.024
Khulna	404794	Terokhada	75.80	0.043
Khulna	404799	Arangghata	78.00	0.030
Kushtia	405015	Bheramara	77.20	0.032
Kushtia	405039	Daulatpur	76.50	0.033
Kushtia	405063	Khoksa	76.40	0.042
Kushtia	405071	Kumarkhali	76.80	0.037
Kushtia	405079	Kushtiasadar	77.60	0.028
Kushtia	405094	Mirpur	77.30	0.035
Magura	405557	Magurasadar	76.80	0.041
Magura	405566	Mohammadpur	76.10	0.046

District	Upazila Code	Upazila_Name	SAE Estimate (%)	Std Error of the proportion
Magura	405585	Shalikha	76.90	0.041
Magura	405595	Sreepur	76.70	0.042
Meherpur	405747	Gangni	75.20	0.033
Meherpur	405760	Mujib Nagar	75.40	0.028
Meherpur	405787	Meherpursadar	75.70	0.034
Narail	406528	Kalia	76.40	0.044
Narail	406552	Lohagara	76.70	0.047
Narail	406576	Narailsadar	77.20	0.045
Satkhira	408704	Assasuni	75.50	0.043
Satkhira	408725	Debhata	76.60	0.044
Satkhira	408743	Kalaroa	76.40	0.039
Satkhira	408747	Kaliganj	75.80	0.042
Satkhira	408782	Satkhirasadar	76.80	0.034
Satkhira	408786	Shyamnagar	75.40	0.040
Satkhira	408790	Tala	76.30	0.042
Jalalpur	453907	Bakshiganj	75.90	0.050
Jalalpur	453915	Dewanganj	75.60	0.046
Jalalpur	453929	Islampur	76.30	0.032
Jalalpur	453936	Jalalpur Sadar	77.20	0.038
Jalalpur	453958	Madarganj	75.80	0.033
Jalalpur	453961	Melandaha	76.80	0.039
Jalalpur	453985	Sarishabari	77.50	0.034
Mymensingh	456113	Bhaluka	75.90	0.025
Mymensingh	456116	Dhobaura	73.70	0.047
Mymensingh	456120	Fulbaria	74.50	0.025
Mymensingh	456122	Gaffargaon	75.00	0.032
Mymensingh	456123	Gauripur	74.50	0.049
Mymensingh	456124	Haluaghat	74.30	0.041
Mymensingh	456131	Ishwarganj	74.30	0.042
Mymensingh	456152	Mymensingh Sadar	75.80	0.028
Mymensingh	456165	Muktagachha	75.30	0.038
Mymensingh	456172	Nandail	74.30	0.041
Mymensingh	456181	Phulpur	74.30	0.043
Mymensingh	456188	Tarakanda	74.50	0.041
Mymensingh	456194	Trishal	75.40	0.030
Netrakona	457204	Atpara	74.20	0.053
Netrakona	457209	Barhatta	74.00	0.058
Netrakona	457218	Durgapur	74.00	0.050
Netrakona	457238	Khaliajuri	74.50	0.040
Netrakona	457240	Kalmakanda	74.00	0.057



District	Upazila Code	Upazila Name	SAE Estimate (%)	Std Error of the proportion
Netrakona	457247	Kendua	74.30	0.049
Netrakona	457256	Madan	74.60	0.044
Netrakona	457263	Mohanganj	74.70	0.051
Netrakona	457274	Netrokonasadar	75.10	0.052
Netrakona	457283	Purbadhala	74.10	0.053
Sherpur	458937	Jhenaigati	76.70	0.039
Sherpur	458967	Nakla	76.40	0.036
Sherpur	458970	Nalitabari	76.30	0.035
Sherpur	458988	Sherpursadar	76.60	0.032
Sherpur	458990	Sreebardi	76.50	0.037
Bogura	501006	Adamdighi	77.40	0.045
Bogura	501020	Bogurasadar	77.60	0.030
Bogura	501027	Dhunat	75.00	0.042
Bogura	501033	Dhupchanchia	77.20	0.055
Bogura	501040	Gabtali	76.00	0.039
Bogura	501054	Kahaloo	77.00	0.052
Bogura	501067	Nandigram	76.10	0.053
Bogura	501081	Sariakandi	74.60	0.035
Bogura	501085	Shajahanpur	76.90	0.033
Bogura	501088	Sherpur	76.00	0.046
Bogura	501094	Shibganj	76.10	0.047
Bogura	501095	Sonatola	75.00	0.042
Joypurhat	503813	Akkelpur	73.70	0.048
Joypurhat	503847	Joypurhatsadar	73.80	0.043
Joypurhat	503858	Kalai	73.80	0.054
Joypurhat	503861	Khetlal	74.20	0.053
Joypurhat	503874	Panchbibi	73.10	0.054
Naogaon	506403	Atrai	70.60	0.054
Naogaon	506406	Badalgachhi	70.30	0.053
Naogaon	506428	Dhamoirhat	70.00	0.058
Naogaon	506447	Manda	70.50	0.043
Naogaon	506450	Mahadebpur	70.70	0.049
Naogaon	506460	Naogaonsadar	71.90	0.044
Naogaon	506469	Niamatpur	69.90	0.061
Naogaon	506475	Patnitala	70.30	0.059
Naogaon	506479	Porsha	69.10	0.072
Naogaon	506485	Raninagar	71.30	0.046
Naogaon	506486	Sapahar	69.30	0.060
Natore	506909	Bagatipara	77.00	0.049
Natore	506915	Baraigram	76.60	0.038

District	Upazila Code	Upazila_Name	SAE Estimate (%)	Std Error of the proportion
Natore	506941	Gurudaspur	76.70	0.034
Natore	506944	Lalpur	76.70	0.041
Natore	506955	Naldanga	77.30	0.037
Natore	506963	Natoresadar	77.10	0.039
Natore	506991	Singra	76.40	0.052
Chapainawabganj	507018	Bholahat	73.00	0.050
Chapainawabganj	507037	Gomastapur	72.90	0.050
Chapainawabganj	507056	Nachole	73.30	0.059
Chapainawabganj	507066	Chapainwabganjsadar	73.00	0.037
Chapainawabganj	507088	Shibganj	73.00	0.045
Pabna	507605	Atgharia	78.10	0.044
Pabna	507616	Bera	77.80	0.039
Pabna	507619	Bhangura	77.90	0.051
Pabna	507622	Chatmohar	77.80	0.042
Pabna	507633	Faridpur	78.20	0.037
Pabna	507639	Ishwardi	79.00	0.030
Pabna	507655	Pabna Sadar	78.70	0.033
Pabna	507672	Santhia	78.20	0.037
Pabna	507683	Sujanagar	78.10	0.037
Rajshahi	508110	Bagha	75.50	0.039
Rajshahi	508112	Baghmara	75.40	0.048
Rajshahi	508122	Boalia	77.50	0.029
Rajshahi	508124	Chandrima	77.10	0.032
Rajshahi	508125	Charghat	75.70	0.039
Rajshahi	508131	Durgapur	76.40	0.037
Rajshahi	508134	Godagari	74.60	0.053
Rajshahi	508138	Kashiadanga	77.00	0.038
Rajshahi	508140	Matihar	76.70	0.030
Rajshahi	508153	Mohanpur	76.70	0.044
Rajshahi	508172	Paba	76.10	0.045
Rajshahi	508182	Puthia	76.10	0.047
Rajshahi	508185	Rajpara	77.00	0.027
Rajshahi	508190	Shah Makhdum	76.30	0.054
Rajshahi	508194	Tanore	75.80	0.050
Sirajganj	508811	Belkuchi	78.00	0.030
Sirajganj	508827	Chauhali	76.60	0.034
Sirajganj	508844	Kamarkhanda	78.20	0.039
Sirajganj	508850	Kazipur	77.20	0.037
Sirajganj	508861	Royganj	77.60	0.042
Sirajganj	508867	Shahjadpur	78.10	0.036

District	Upazila Code	Upazila Name	SAE Estimate (%)	Std Error of the proportion
Sirajganj	508878	Sirajganj Sadar	78.50	0.037
Sirajganj	508889	Tarash	78.10	0.049
Sirajganj	508894	Ullapara	77.90	0.042
Dinajpur	552710	Birampur	69.30	0.056
Dinajpur	552712	Birganj	68.60	0.044
Dinajpur	552717	Biral	68.60	0.049
Dinajpur	552721	Bochaganj	68.50	0.053
Dinajpur	552730	Chirirbandar	68.70	0.034
Dinajpur	552738	Fulbari	69.50	0.048
Dinajpur	552743	Ghoraghat	69.00	0.058
Dinajpur	552747	Hakimpur	69.80	0.053
Dinajpur	552756	Kaharole	68.40	0.053
Dinajpur	552760	Khansama	67.90	0.034
Dinajpur	552764	Dinajpur Sadar	70.20	0.039
Dinajpur	552769	Nawabganj	68.60	0.054
Dinajpur	552777	Parbatipur	68.80	0.041
Gaibandha	553221	Fulchhari	68.20	0.037
Gaibandha	553224	Gaibandhasadar	69.10	0.032
Gaibandha	553230	Gobindaganj	69.20	0.045
Gaibandha	553267	Palashbari	68.90	0.043
Gaibandha	553282	Sadullapur	68.50	0.040
Gaibandha	553288	Saghata	69.00	0.037
Gaibandha	553291	Sundarganj	68.40	0.032
Kurigram	554906	Bhurungamari	73.00	0.038
Kurigram	554908	Char Rajibpur	72.30	0.062
Kurigram	554909	Chilmari	72.80	0.051
Kurigram	554918	Phulbari	72.90	0.052
Kurigram	554952	Kurigramsadar	73.30	0.054
Kurigram	554961	Nageshwari	72.70	0.054
Kurigram	554977	Rajarhat	73.20	0.049
Kurigram	554979	Raumari	72.70	0.056
Kurigram	554994	Ulipur	72.90	0.048
Lalmonirhat	555202	Aditmari	72.90	0.032
Lalmonirhat	555233	Hatibandha	72.50	0.029
Lalmonirhat	555239	Kaliganj	72.70	0.030
Lalmonirhat	555255	Lalmonirhatsadar	73.40	0.043
Lalmonirhat	555270	Patgram	72.60	0.028
Nilphamari	557312	Dimla	69.30	0.024
Nilphamari	557315	Domar	69.70	0.027
Nilphamari	557336	Jaldhaka	69.30	0.026

District	Upazila Code	Upazila_Name	SAE Estimate (%)	Std Error of the proportion
Nilphamari	557345	Kishoreganj	69.40	0.024
Nilphamari	557364	Nilphamarisadar	69.90	0.029
Nilphamari	557385	Saidpur	71.10	0.030
Panchagarh	557704	Atwari	72.70	0.037
Panchagarh	557725	Boda	72.00	0.054
Panchagarh	557734	Debiganj	71.50	0.033
Panchagarh	557773	Panchagarhsadar	72.30	0.052
Panchagarh	557790	Tentulia	71.90	0.073
Rangpur	558503	Badarganj	69.80	0.032
Rangpur	558527	Gangachara	69.60	0.034
Rangpur	558542	Kaunia	70.40	0.041
Rangpur	558549	Rangpur Sadar	71.20	0.041
Rangpur	558558	Mithapukur	69.60	0.039
Rangpur	558573	Pirgachha	70.00	0.037
Rangpur	558576	Pirganj	69.70	0.046
Rangpur	558592	Taraganj	69.90	0.029
Thakurgaon	559408	Baliadangi	67.50	0.035
Thakurgaon	559451	Haripur	67.10	0.040
Thakurgaon	559482	Pirganj	67.70	0.047
Thakurgaon	559486	Ranisankail	67.60	0.042
Thakurgaon	559494	Thakurgaonsadar	68.60	0.034
Habiganj	603602	Ajmiriganj	68.30	0.056
Habiganj	603605	Bahubal	68.40	0.068
Habiganj	603611	Baniachong	68.20	0.056
Habiganj	603626	Chunarughat	68.40	0.062
Habiganj	603644	Habiganjsadar	69.90	0.056
Habiganj	603668	Lakhai	67.90	0.036
Habiganj	603671	Madhabpur	68.90	0.054
Habiganj	603677	Nabiganj	68.40	0.061
Habiganj	603687	Shayestaganj	69.70	0.059
Maulvibazar	605814	Barlekha	66.80	0.064
Maulvibazar	605835	Juri	66.40	0.054
Maulvibazar	605856	Kamalganj	66.30	0.053
Maulvibazar	605865	Kulaura	67.20	0.065
Maulvibazar	605874	Maulvibazarsadar	67.80	0.064
Maulvibazar	605880	Rajnagar	66.80	0.064
Maulvibazar	605883	Sreemangal	66.80	0.045
Sunamganj	609018	Bishwambarpur	66.40	0.063
Sunamganj	609023	Chhatak	67.70	0.069
Sunamganj	609027	Dakshin Sunamganj	67.30	0.056

District	Upazila Code	Upazila_Name	SAE Estimate (%)	Std Error of the proportion
Sunamganj	609029	Derai	67.20	0.062
Sunamganj	609032	Dharampasha	66.40	0.068
Sunamganj	609033	Dowarabazar	66.60	0.067
Sunamganj	609047	Jagannathpur	67.30	0.066
Sunamganj	609050	Jamalganj	66.70	0.063
Sunamganj	609063	Madhyanagar	NA	NA
Sunamganj	609086	Sulla	68.00	0.059
Sunamganj	609089	Sunamganjsadar	67.50	0.063
Sunamganj	609092	Tahirpur	NA	NA
Sylhet	609108	Balaganj	66.60	0.073
Sylhet	609117	Beani Bazar	68.00	0.059
Sylhet	609120	Bishwanath	67.70	0.079
Sylhet	609127	Companiganj	65.80	0.057
Sylhet	609131	Dakshin Surma	68.60	0.066
Sylhet	609135	Fenchuganj	67.70	0.055
Sylhet	609138	Golapganj	67.90	0.057
Sylhet	609141	Gowainghat	65.60	0.063
Sylhet	609153	Jaintiapur	66.10	0.065
Sylhet	609159	Kanaighat	66.30	0.062
Sylhet	609160	Osmaninagar	67.50	0.073
Sylhet	609162	Sylhet Sadar	68.80	0.048
Sylhet	609194	Zakiganj	65.80	0.066

*Note: NA means not available. NA- for the upazila whose codes are not available in the census and we cannot generate its SAE estimates.*

**Table C.5 Comparison of Estimates of Child Marriage Before Age 18 in MICS 2019 at Upazila Level**

District	Upazila Code	Upazila_Name	SAE Estimate (%)	Std Error of the Proportion
Barguna	100409	Amtali	51.40	0.023
Barguna	100419	Bamna	51.00	0.022
Barguna	100428	Bargunasadar	51.20	0.026
Barguna	100447	Betagi	52.70	0.023
Barguna	100485	Patharghata	51.50	0.018
Barguna	100490	Taltali	50.40	0.029
Barishal	100602	Agailjhara	51.40	0.023
Barishal	100603	Babuganj	52.40	0.024
Barishal	100607	Bakerganj	53.20	0.020
Barishal	100610	Banaripara	51.50	0.020
Barishal	100632	Gaurnadi	51.40	0.025
Barishal	100636	Hizla	51.20	0.019
Barishal	100651	Barishalsadar	50.40	0.023
Barishal	100662	Mehendiganj	52.10	0.019
Barishal	100669	Muladi	53.70	0.021
Barishal	100694	Wazirpur	51.90	0.020
Bhola	100918	Bhola Sadar	50.90	0.014
Bhola	100921	Borhanuddin	51.90	0.013
Bhola	100925	Char Fasson	50.90	0.011
Bhola	100929	Daulat Khan	51.30	0.012
Bhola	100954	Lalmohan	51.70	0.015
Bhola	100965	Manpura	50.90	0.017
Bhola	100991	Tazumuddin	50.00	0.020
Jhalokati	104240	Jhalokathisadar	47.70	0.029
Jhalokati	104243	Kathalia	48.10	0.018
Jhalokati	104273	Nalchity	49.40	0.026
Jhalokati	104284	Rajapur	49.20	0.019
Patuakhali	107838	Bauphal	52.80	0.018
Patuakhali	107852	Dashmina	51.60	0.017
Patuakhali	107855	Dumki	52.50	0.016
Patuakhali	107857	Galachipa	50.90	0.022
Patuakhali	107866	Kalapara	50.40	0.028
Patuakhali	107876	Mirzaganj	51.60	0.021
Patuakhali	107895	Patuakhali Sadar	50.80	0.021
Patuakhali	107897	Rangabali	49.90	0.025
Pirojpur	107914	Bhandaria	52.10	0.015
Pirojpur	107947	Kawkhali	50.70	0.027
Pirojpur	107958	Mathbaria	51.00	0.018

District	Upazila Code	Upazila_Name	SAE Estimate (%)	Std Error of the Proportion
Pirojpur	107976	Nazirpur	50.40	0.027
Pirojpur	107980	Pirojpur Sadar	51.50	0.024
Pirojpur	107987	Nesarabad	51.20	0.019
Pirojpur	107990	Indurkani	52.30	0.023
Bandarban	200304	Alikadam	49.00	0.039
Bandarban	200314	Bandarban Sadar	48.90	0.042
Bandarban	200351	Lama	49.70	0.039
Bandarban	200373	Naikhongchhari	49.50	0.045
Bandarban	200389	Rowangchhari	49.20	0.048
Bandarban	200391	Ruma	48.90	0.048
Bandarban	200395	Thanchi	49.20	0.051
Brahmanbaria	201202	Akhaura	51.40	0.028
Brahmanbaria	201204	Banchharampur	53.40	0.019
Brahmanbaria	201207	Bijoy Nagar	51.50	0.027
Brahmanbaria	201213	Brahmanbaria Sadar	50.40	0.020
Brahmanbaria	201233	Ashuganj	51.60	0.014
Brahmanbaria	201263	Kasba	52.60	0.026
Brahmanbaria	201285	Nabinagar	53.70	0.019
Brahmanbaria	201290	Nasirnagar	51.30	0.019
Brahmanbaria	201294	Sarail	52.00	0.019
Chandpur	201322	Chandpur Sadar	52.30	0.018
Chandpur	201345	Faridganj	54.20	0.019
Chandpur	201347	Haimchar	53.00	0.018
Chandpur	201349	Hajiganj	51.80	0.021
Chandpur	201358	Kachua	52.30	0.022
Chandpur	201376	Matlab Dakshin	54.00	0.021
Chandpur	201379	Matlab Uttar	52.10	0.030
Chandpur	201395	Shahrasti	52.40	0.026
Chattogram	201502	Akbarshah	50.80	0.010
Chattogram	201504	Anowara	51.50	0.016
Chattogram	201506	Bayejidbostami	51.10	0.011
Chattogram	201508	Banshkhali	53.30	0.012
Chattogram	201510	Bakalia	51.10	0.008
Chattogram	201512	Boalkhali	50.80	0.010
Chattogram	201516	Chalkbazar	50.40	0.007
Chattogram	201518	Chandanaish	50.70	0.014
Chattogram	201519	Chandgaon	50.90	0.008
Chattogram	201520	Chattogram Port	51.10	0.006
Chattogram	201528	Double Mooring	49.60	0.010
Chattogram	201531	Epz	51.20	0.009
Chattogram	201533	Fatikchhari	51.00	0.017

District	Upazila Code	Upazila_Name	SAE Estimate (%)	Std Error of the Proportion
Chattogram	201535	Halishahar	49.50	0.011
Chattogram	201537	Hathazari	50.80	0.009
Chattogram	201539	Karnaphuli	49.10	0.009
Chattogram	201541	Kotwali	51.10	0.007
Chattogram	201543	Khulshi	50.60	0.012
Chattogram	201547	Lohagara	53.00	0.010
Chattogram	201553	Mirsharai	52.40	0.023
Chattogram	201555	Pahartali	50.50	0.008
Chattogram	201557	Panchlaish	51.10	0.007
Chattogram	201561	Patiya	50.40	0.016
Chattogram	201565	Patenga	50.20	0.008
Chattogram	201570	Rangunia	51.90	0.021
Chattogram	201574	Raozan	51.80	0.013
Chattogram	201577	Sadarghat	49.70	0.010
Chattogram	201578	Sandwip	55.00	0.010
Chattogram	201582	Satkania	52.50	0.015
Chattogram	201586	Sitakunda	49.30	0.014
Cumilla	201909	Barura	53.30	0.026
Cumilla	201915	Brahmanpara	53.20	0.018
Cumilla	201918	Burichang	52.00	0.021
Cumilla	201927	Chandina	52.60	0.024
Cumilla	201931	Chauddagram	52.90	0.030
Cumilla	201933	Sadar Dakshin	51.30	0.030
Cumilla	201936	Daudkandi	51.50	0.028
Cumilla	201940	Debidwar	53.10	0.021
Cumilla	201954	Homna	51.50	0.027
Cumilla	201967	Adarsha Sadar	50.80	0.018
Cumilla	201972	Laksam	51.90	0.024
Cumilla	201973	Lalmal	53.10	0.030
Cumilla	201974	Manoharganj	52.90	0.028
Cumilla	201975	Meghna	49.60	0.030
Cumilla	201981	Muradnagar	53.20	0.022
Cumilla	201987	Nangalkot	54.00	0.027
Cumilla	201994	Titas	52.90	0.027
Cox's Bazar	202216	Chakaria	49.50	0.022
Cox's Bazar	202224	Cox's Bazar Sadar	47.80	0.023
Cox's Bazar	202232	Eidgaon	NA	NA
Cox's Bazar	202245	Kutubdia	NA	NA
Cox's Bazar	202249	Maheshkhali	48.30	0.023
Cox's Bazar	202256	Pekua	50.60	0.031
Cox's Bazar	202266	Ramu	49.20	0.019



District	Upazila Code	Upazila_Name	SAE Estimate (%)	Std Error of the Proportion
Cox's Bazar	202290	Teknaf	49.30	0.026
Cox's Bazar	202294	Ukhiya	49.90	0.019
Feni	203014	Chhagalnaiya	52.70	0.021
Feni	203025	Daganbhuiyan	53.40	0.022
Feni	203029	Fenisadar	51.10	0.017
Feni	203041	Fulgazi	50.50	0.026
Feni	203051	Parshuram	53.10	0.028
Feni	203094	Sonagazi	52.60	0.018
Khagrachhari	204643	Dighinala	49.50	0.034
Khagrachhari	204647	Guimara	49.90	0.041
Khagrachhari	204649	Khagrachharisadar	49.00	0.035
Khagrachhari	204661	Lakshmichhari	49.60	0.043
Khagrachhari	204665	Mahalchhari	49.40	0.040
Khagrachhari	204667	Manikchhari	50.90	0.035
Khagrachhari	204670	Matiranga	50.20	0.040
Khagrachhari	204677	Panchhari	49.70	0.038
Khagrachhari	204680	Ramgarh	49.60	0.032
Lakshmipur	205133	Kamalnagar	52.40	0.010
Lakshmipur	205143	Lakshmipursadar	53.10	0.017
Lakshmipur	205158	Roypur	52.30	0.014
Lakshmipur	205165	Ramganj	54.00	0.021
Lakshmipur	205173	Ramgati	53.00	0.012
Noakhali	207507	Begumganj	51.50	0.016
Noakhali	207510	Chatkhil	52.90	0.022
Noakhali	207521	Companiganj	51.70	0.012
Noakhali	207536	Hatiya	51.30	0.010
Noakhali	207547	Kabirhat	51.80	0.019
Noakhali	207580	Senbagh	52.00	0.018
Noakhali	207583	Sonaimuri	52.60	0.021
Noakhali	207585	Subarnachar	50.90	0.014
Noakhali	207587	Noakhali Sadar	52.00	0.017
Rangamati	208407	Baghaichhari	48.70	0.041
Rangamati	208421	Barkal	48.10	0.042
Rangamati	208425	Kawkhali	49.50	0.037
Rangamati	208429	Belaichhari	49.10	0.035
Rangamati	208436	Kaptai	49.10	0.034
Rangamati	208447	Juraichhari	48.90	0.046
Rangamati	208458	Langadu	49.90	0.029
Rangamati	208475	Naniarchar	48.80	0.040
Rangamati	208478	Rajasthali	50.20	0.039
Rangamati	208487	Rangamati Sadar	48.10	0.026

District	Upazila Code	Upazila_Name	SAE Estimate (%)	Std Error of the Proportion
Dhaka	302602	Adabor	53.30	0.009
Dhaka	302604	Badda	52.00	0.010
Dhaka	302605	Bangshal	48.80	0.016
Dhaka	302606	Biman Bandar	45.90	0.026
Dhaka	302607	Banani	54.30	0.009
Dhaka	302608	Cantonment	53.00	0.009
Dhaka	302609	Chak Bazar	49.70	0.015
Dhaka	302610	Dakshinkhan	52.80	0.007
Dhaka	302611	Darus Salam	53.50	0.009
Dhaka	302612	Demra	53.30	0.008
Dhaka	302614	Dhamrai	53.40	0.026
Dhaka	302616	Dhanmondi	56.70	0.007
Dhaka	302618	Dohar	56.10	0.023
Dhaka	302621	Bhasantek	54.00	0.008
Dhaka	302622	Bhatara	52.80	0.007
Dhaka	302624	Gendaria	52.60	0.012
Dhaka	302626	Gulshan	55.30	0.020
Dhaka	302627	Hatirjheel	53.20	0.007
Dhaka	302628	Hazaribagh	53.70	0.009
Dhaka	302629	Jatrabari	52.90	0.008
Dhaka	302630	Kafrul	53.60	0.006
Dhaka	302632	Kadamtali	52.80	0.009
Dhaka	302633	Kalabagan	53.20	0.009
Dhaka	302634	Kamrangir Char	52.90	0.009
Dhaka	302636	Khilgaon	53.20	0.007
Dhaka	302637	Khilkhet	52.40	0.015
Dhaka	302638	Keraniganj	52.40	0.017
Dhaka	302640	Kotwali	48.30	0.024
Dhaka	302642	Lalbagh	51.70	0.010
Dhaka	302648	Mirpur	52.80	0.007
Dhaka	302650	Mohammadpur	54.10	0.008
Dhaka	302654	Motijheel	52.70	0.013
Dhaka	302657	Mugda	52.80	0.007
Dhaka	302662	Nawabganj	55.70	0.028
Dhaka	302663	New Market	43.50	0.013
Dhaka	302664	Pallabi	53.00	0.010
Dhaka	302665	Paltan	48.80	0.015
Dhaka	302666	Ramna	54.50	0.009
Dhaka	302667	Rampura	52.70	0.008
Dhaka	302668	Sabujbagh	52.90	0.009
Dhaka	302670	Rupnagar	53.50	0.007

District	Upazila Code	Upazila_Name	SAE Estimate (%)	Std Error of the Proportion
Dhaka	302672	Savar	52.20	0.011
Dhaka	302673	Shahjahanpur	53.40	0.010
Dhaka	302674	Shah Ali	52.70	0.011
Dhaka	302675	Shahbagh	39.00	0.011
Dhaka	302676	Shyampur	53.10	0.009
Dhaka	302680	Sher-E-Bangla Nagar	51.90	0.008
Dhaka	302688	Sutrapur	53.10	0.016
Dhaka	302690	Tejgaon	51.50	0.008
Dhaka	302692	Tejgaon Ind. Area	53.60	0.009
Dhaka	302693	Turag	52.20	0.010
Dhaka	302694	Uttrapashchim	54.50	0.010
Dhaka	302695	Uttara	54.00	0.013
Dhaka	302696	Uttar Khan	52.10	0.018
Dhaka	302698	Wari	51.50	0.014
Faridpur	302903	Alfadanga	53.90	0.029
Faridpur	302910	Bhanga	53.10	0.027
Faridpur	302918	Boalmari	51.70	0.029
Faridpur	302921	Char Bhadrasan	54.20	0.031
Faridpur	302947	Faridpur Sadar	51.90	0.022
Faridpur	302956	Madhukhali	51.30	0.032
Faridpur	302962	Nagarkanda	51.80	0.030
Faridpur	302984	Sadarpur	53.70	0.032
Faridpur	302990	Saltha	51.60	0.031
Gazipur	303315	Basan	47.10	0.011
Gazipur	303318	Gachha	52.20	0.007
Gazipur	303330	Gazipur Sadar	52.10	0.012
Gazipur	303332	Kaliakair	49.90	0.015
Gazipur	303334	Kaliganj	52.20	0.022
Gazipur	303336	Kapasias	54.10	0.022
Gazipur	303340	Kashimpur	48.40	0.014
Gazipur	303345	Konabari	47.70	0.007
Gazipur	303350	Pubail	49.70	0.024
Gazipur	303374	Joydebpur	51.10	0.011
Gazipur	303386	Sreepur	52.00	0.015
Gazipur	303390	Tongipashchim	51.50	0.008
Gazipur	303393	Tongipurba	52.30	0.006
Gopalganj	303532	Gopalganj Sadar	50.90	0.023
Gopalganj	303543	Kashiani	52.40	0.024
Gopalganj	303551	Kotalipara	50.90	0.027
Gopalganj	303558	Muksudpur	51.20	0.027
Gopalganj	303591	Tungipara	50.40	0.027

District	Upazila Code	Upazila_Name	SAE Estimate (%)	Std Error of the Proportion
Kishoregonj	304802	Austagram	50.50	0.017
Kishoregonj	304806	Bajitpur	51.80	0.026
Kishoregonj	304811	Bhairab	50.70	0.016
Kishoregonj	304827	Hossainpur	51.70	0.022
Kishoregonj	304833	Itna	50.00	0.022
Kishoregonj	304842	Karimganj	51.30	0.024
Kishoregonj	304845	Katiadi	52.60	0.020
Kishoregonj	304849	Kishoreganj Sadar	50.90	0.023
Kishoregonj	304854	Kuliar Char	52.40	0.024
Kishoregonj	304859	Mithamain	49.00	0.028
Kishoregonj	304876	Nikli	50.90	0.021
Kishoregonj	304879	Pakundia	52.70	0.023
Kishoregonj	304892	Tarail	51.00	0.022
Madaripur	305418	Dasar	NA	NA
Madaripur	305440	Kalkini	52.50	0.025
Madaripur	305454	Madaripur Sadar	Na	Na
Madaripur	305480	Rajoir	51.00	0.027
Madaripur	305487	Shibchar	52.40	0.033
Manikganj	305610	Daulatpur	52.80	0.026
Manikganj	305622	Ghior	51.10	0.029
Manikganj	305628	Harirampur	53.00	0.032
Manikganj	305646	Manikganjsadar	51.60	0.028
Manikganj	305670	Saturia	50.90	0.030
Manikganj	305678	Shibalaya	50.50	0.032
Manikganj	305682	Singair	51.70	0.024
Munshiganj	305924	Gazaria	51.60	0.027
Munshiganj	305944	Lohajang	52.80	0.021
Munshiganj	305956	Munshiganjsadar	50.40	0.026
Munshiganj	305974	Serajdikhan	50.60	0.025
Munshiganj	305984	Sreenagar	51.90	0.021
Munshiganj	305994	Tongibari	51.60	0.024
Narayanganj	306702	Araihazar	51.40	0.027
Narayanganj	306704	Sonargaon	51.30	0.026
Narayanganj	306706	Bandar	51.80	0.021
Narayanganj	306758	Narayanganj Sadar	51.80	0.010
Narayanganj	306768	Rupganj	51.50	0.016
Narsingdi	306807	Belabo	52.80	0.019
Narsingdi	306852	Manohardi	54.00	0.020
Narsingdi	306860	Narsingdisadar	50.60	0.018
Narsingdi	306863	Palash	51.30	0.021
Narsingdi	306864	Roypura	53.40	0.020

District	Upazila Code	Upazila_Name	SAE Estimate (%)	Std Error of the Proportion
Narsingdi	306876	Shibpur	52.20	0.024
Rajbari	308207	Baliakandi	49.70	0.031
Rajbari	308229	Goalanda	51.00	0.035
Rajbari	308247	Kalukhali	50.50	0.028
Rajbari	308273	Pangsha	51.00	0.025
Rajbari	308276	Rajbari Sadar	51.70	0.023
Shariatpur	308614	Bhedarganj	52.20	0.035
Shariatpur	308625	Damudya	53.10	0.027
Shariatpur	308636	Gosairhat	52.50	0.030
Shariatpur	308665	Naria	52.00	0.026
Shariatpur	308669	Shariatpursadar	50.90	0.026
Shariatpur	308694	Zajira	51.50	0.033
Tangail	309309	Basail	52.70	0.023
Tangail	309319	Bhuapur	52.70	0.022
Tangail	309323	Delduar	50.70	0.024
Tangail	309325	Dhanbari	51.40	0.024
Tangail	309328	Ghatail	51.50	0.027
Tangail	309338	Gopalpur	51.20	0.024
Tangail	309347	Kalihati	51.30	0.024
Tangail	309357	Madhupur	50.60	0.021
Tangail	309366	Mirzapur	50.70	0.019
Tangail	309376	Nagarpur	52.00	0.026
Tangail	309385	Sakhipur	52.80	0.017
Tangail	309395	Tangail Sadar	49.90	0.020
Bagerhat	400108	Bagerhat Sadar	60.70	0.025
Bagerhat	400114	Chitalmari	60.90	0.025
Bagerhat	400134	Fakirhat	60.10	0.021
Bagerhat	400138	Kachua	61.40	0.028
Bagerhat	400156	Mollahat	61.10	0.025
Bagerhat	400158	Mongla	60.50	0.022
Bagerhat	400160	Morrelganj	62.50	0.019
Bagerhat	400173	Rampal	60.80	0.024
Bagerhat	400177	Sarankhola	62.40	0.016
Chuadanga	401807	Alamdanga	62.10	0.021
Chuadanga	401823	Chuadangasadar	62.20	0.020
Chuadanga	401831	Damurhuda	62.00	0.017
Chuadanga	401855	Jibannagar	62.10	0.019
Jashore	404104	Abhaynagar	62.30	0.016
Jashore	404109	Bagherpara	62.50	0.027
Jashore	404111	Chaugachha	62.60	0.023
Jashore	404123	Jhikargachha	62.90	0.022

District	Upazila Code	Upazila_Name	SAE Estimate (%)	Std Error of the Proportion
Jashore	404138	Keshabpur	62.70	0.022
Jashore	404147	Jashoresadar	62.10	0.017
Jashore	404161	Manirampur	63.10	0.019
Jashore	404190	Sharsha	62.30	0.020
Jhenaidah	404414	Harinakunda	61.70	0.022
Jhenaidah	404419	Jhenaidahsadar	61.90	0.022
Jhenaidah	404433	Kaliganj	61.90	0.024
Jhenaidah	404442	Kotchandpur	61.60	0.025
Jhenaidah	404471	Maheshpur	61.60	0.023
Jhenaidah	404480	Shailkupa	61.20	0.026
Khulna	404712	Batiaghata	61.00	0.026
Khulna	404717	Dacope	61.70	0.021
Khulna	404721	Daulatpur	64.00	0.014
Khulna	404730	Dumuria	61.20	0.021
Khulna	404740	Dighalia	61.50	0.013
Khulna	404745	Khalishpur	62.70	0.013
Khulna	404748	Khan Jahan Ali	61.40	0.013
Khulna	404751	Khulna Sadar	62.70	0.013
Khulna	404753	Koyra	62.40	0.022
Khulna	404764	Paikgachha	61.70	0.022
Khulna	404769	Phultala	61.90	0.016
Khulna	404775	Rupsa	61.00	0.017
Khulna	404785	Sonadanga	61.00	0.014
Khulna	404794	Terokhada	62.60	0.025
Khulna	404799	Arangghata	62.30	0.020
Kushtia	405015	Bheramara	61.90	0.019
Kushtia	405039	Daulatpur	62.20	0.017
Kushtia	405063	Khoksa	62.50	0.024
Kushtia	405071	Kumarkhali	62.20	0.021
Kushtia	405079	Kushtiasadar	61.40	0.015
Kushtia	405094	Mirpur	61.20	0.020
Magura	405557	Magurasadar	61.20	0.024
Magura	405566	Mohammadpur	61.80	0.026
Magura	405585	Shalikha	61.10	0.024
Magura	405595	Sreepur	61.70	0.025
Meherpur	405747	Gangni	63.00	0.017
Meherpur	405760	Mujib Nagar	63.00	0.016
Meherpur	405787	Meherpursadar	62.70	0.019
Narail	406528	Kalia	62.20	0.025
Narail	406552	Lohagara	62.80	0.026
Narail	406576	Narailsadar	61.60	0.025

District	Upazila Code	Upazila_Name	SAE Estimate (%)	Std Error of the Proportion
Satkhira	408704	Assasuni	62.00	0.024
Satkhira	408725	Debhata	61.70	0.025
Satkhira	408743	Kalaroa	62.50	0.021
Satkhira	408747	Kaliganj	62.60	0.023
Satkhira	408782	Satkhirasadar	61.90	0.018
Satkhira	408786	Shyamnagar	63.30	0.021
Satkhira	408790	Tala	62.00	0.023
Jalalpur	453907	Bakshiganj	51.10	0.029
Jalalpur	453915	Dewanganj	51.10	0.027
Jalalpur	453929	Islampur	51.30	0.018
Jalalpur	453936	Jalalpur Sadar	51.00	0.022
Jalalpur	453958	Madarganj	51.60	0.019
Jalalpur	453961	Melandaha	51.40	0.022
Jalalpur	453985	Sarishabari	51.50	0.020
Mymensingh	456113	Bhaluka	50.30	0.012
Mymensingh	456116	Dhobaura	51.70	0.027
Mymensingh	456120	Fulbaria	50.90	0.013
Mymensingh	456122	Gaffargaon	52.40	0.017
Mymensingh	456123	Gauripur	50.80	0.028
Mymensingh	456124	Haluaghat	51.40	0.023
Mymensingh	456131	Ishwarganj	50.70	0.024
Mymensingh	456152	Mymensingh Sadar	50.20	0.015
Mymensingh	456165	Muktagachha	50.50	0.022
Mymensingh	456172	Nandail	51.20	0.023
Mymensingh	456181	Phulpur	51.30	0.025
Mymensingh	456188	Tarakanda	50.60	0.023
Mymensingh	456194	Trishal	51.60	0.018
Netrakona	457204	Atpara	50.30	0.031
Netrakona	457209	Barhatta	49.70	0.033
Netrakona	457218	Durgapur	50.80	0.030
Netrakona	457238	Khaliajuri	48.00	0.024
Netrakona	457240	Kalmakanda	50.40	0.033
Netrakona	457247	Kendua	50.70	0.029
Netrakona	457256	Madan	49.40	0.026
Netrakona	457263	Mohanganj	49.20	0.031
Netrakona	457274	Netrokonasadar	49.70	0.030
Netrakona	457283	Purbadhala	51.00	0.029
Sherpur	458937	Jhenaigati	50.80	0.023
Sherpur	458967	Nakla	51.70	0.020
Sherpur	458970	Nalitabari	50.50	0.020
Sherpur	458988	Sherpursadar	50.50	0.018

District	Upazila Code	Upazila_Name	SAE Estimate (%)	Std Error of the Proportion
Sherpur	458990	Sreebardi	50.60	0.023
Bogura	501006	Adamdighi	63.00	0.026
Bogura	501020	Bogurasadar	62.70	0.016
Bogura	501027	Dhumat	64.40	0.022
Bogura	501033	Dhupchanchia	63.40	0.032
Bogura	501040	Gabtali	64.20	0.021
Bogura	501054	Kahaloo	63.00	0.029
Bogura	501067	Nandigram	62.40	0.030
Bogura	501081	Sariakandi	64.60	0.018
Bogura	501085	Shajahanpur	63.40	0.019
Bogura	501088	Sherpur	62.60	0.026
Bogura	501094	Shibganj	63.30	0.026
Bogura	501095	Sonatola	65.20	0.023
Joypurhat	503813	Akkelpur	64.20	0.026
Joypurhat	503847	Joypurhatsadar	63.70	0.023
Joypurhat	503858	Kalai	63.10	0.029
Joypurhat	503861	Khetlal	63.30	0.029
Joypurhat	503874	Panchbibi	63.20	0.028
Naogaon	506403	Atrai	62.30	0.026
Naogaon	506406	Badalgachhi	63.90	0.026
Naogaon	506428	Dhamoirhat	62.70	0.029
Naogaon	506447	Manda	63.30	0.022
Naogaon	506450	Mahadebpur	62.80	0.025
Naogaon	506460	Naogaonsadar	63.20	0.021
Naogaon	506469	Niamatpur	62.30	0.032
Naogaon	506475	Patnitala	62.20	0.031
Naogaon	506479	Porsha	61.70	0.035
Naogaon	506485	Raninagar	63.10	0.024
Naogaon	506486	Sapahar	61.60	0.032
Natore	506909	Bagatipara	63.40	0.029
Natore	506915	Baraigram	63.70	0.021
Natore	506941	Gurudaspur	63.40	0.018
Natore	506944	Lalpur	63.10	0.023
Natore	506955	Naldanga	63.50	0.022
Natore	506963	Natoresadar	63.30	0.022
Natore	506991	Singra	62.90	0.030
Chapainawabganj	507018	Bholahat	64.90	0.026
Chapainawabganj	507037	Gomastapur	64.40	0.025
Chapainawabganj	507056	Nachole	63.60	0.031
Chapainawabganj	507066	Chapainwabganjsadar	65.70	0.019
Chapainawabganj	507088	Shibganj	63.70	0.023



District	Upazila Code	Upazila_Name	SAE Estimate (%)	Std Error of the Proportion
Pabna	507605	Atgharia	63.00	0.027
Pabna	507616	Bera	63.10	0.022
Pabna	507619	Bhangura	62.50	0.030
Pabna	507622	Chatmohar	62.60	0.024
Pabna	507633	Faridpur	62.60	0.022
Pabna	507639	Ishwardi	62.40	0.016
Pabna	507655	Pabna Sadar	63.40	0.019
Pabna	507672	Santhia	62.70	0.021
Pabna	507683	Sujanagar	63.60	0.021
Rajshahi	508110	Bagha	64.20	0.023
Rajshahi	508112	Baghmara	63.40	0.027
Rajshahi	508122	Boalia	64.40	0.017
Rajshahi	508124	Chandrima	64.00	0.017
Rajshahi	508125	Charghat	63.80	0.021
Rajshahi	508131	Durgapur	63.60	0.020
Rajshahi	508134	Godagari	62.90	0.028
Rajshahi	508138	Kashiadanga	63.70	0.022
Rajshahi	508140	Matihar	49.20	0.015
Rajshahi	508153	Mohanpur	63.10	0.026
Rajshahi	508172	Paba	63.20	0.024
Rajshahi	508182	Puthia	63.00	0.026
Rajshahi	508185	Rajpara	62.30	0.015
Rajshahi	508190	Shah Makhdum	62.40	0.030
Rajshahi	508194	Tanore	63.40	0.028
Sirajganj	508811	Belkuchi	61.50	0.016
Sirajganj	508827	Chauhali	63.70	0.018
Sirajganj	508844	Kamarkhanda	63.30	0.021
Sirajganj	508850	Kazipur	63.70	0.020
Sirajganj	508861	Royganj	62.30	0.025
Sirajganj	508867	Shahjadpur	61.80	0.020
Sirajganj	508878	Sirajganj Sadar	62.40	0.021
Sirajganj	508889	Tarash	62.40	0.029
Sirajganj	508894	Ullapara	62.10	0.024
Dinajpur	552710	Birampur	50.70	0.030
Dinajpur	552712	Birganj	50.20	0.023
Dinajpur	552717	Biral	50.90	0.026
Dinajpur	552721	Bochaganj	50.70	0.028
Dinajpur	552730	Chirirbandar	51.00	0.018
Dinajpur	552738	Fulbari	51.00	0.026
Dinajpur	552743	Ghoraghat	51.30	0.031
Dinajpur	552747	Hakimpur	50.80	0.029

District	Upazila Code	Upazila_Name	SAE Estimate (%)	Std Error of the Proportion
Dinajpur	552756	Kaharole	50.20	0.028
Dinajpur	552760	Khansama	50.30	0.016
Dinajpur	552764	Dinajpur Sadar	50.40	0.019
Dinajpur	552769	Nawabganj	50.80	0.029
Dinajpur	552777	Parbatipur	51.20	0.022
Gaibandha	553221	Fulchhari	51.10	0.018
Gaibandha	553224	Gaibandhasadar	51.80	0.015
Gaibandha	553230	Gobindaganj	50.90	0.024
Gaibandha	553267	Palashbari	51.90	0.023
Gaibandha	553282	Sadullapur	52.00	0.021
Gaibandha	553288	Saghata	52.60	0.019
Gaibandha	553291	Sundarganj	51.70	0.016
Kurigram	554906	Bhurungamari	50.50	0.020
Kurigram	554908	Char Rajibpur	52.30	0.035
Kurigram	554909	Chilmari	52.20	0.028
Kurigram	554918	Phulbari	50.60	0.029
Kurigram	554952	Kurigramsadar	50.90	0.030
Kurigram	554961	Nageshwari	51.00	0.030
Kurigram	554977	Rajarhat	51.30	0.028
Kurigram	554979	Raumari	51.20	0.031
Kurigram	554994	Ulipur	52.20	0.026
Lalmonirhat	555202	Aditmari	49.70	0.017
Lalmonirhat	555233	Hatibandha	50.10	0.016
Lalmonirhat	555239	Kaliganj	50.20	0.017
Lalmonirhat	555255	Lalmonirhatsadar	50.10	0.024
Lalmonirhat	555270	Patgram	49.30	0.016
Nilphamari	557312	Dimla	49.90	0.013
Nilphamari	557315	Domar	50.50	0.014
Nilphamari	557336	Jaldhaka	50.30	0.013
Nilphamari	557345	Kishoreganj	50.50	0.012
Nilphamari	557364	Nilphamarisadar	50.00	0.014
Nilphamari	557385	Saidpur	49.00	0.015
Panchagarh	557704	Atwari	50.30	0.020
Panchagarh	557725	Boda	49.40	0.031
Panchagarh	557734	Debiganj	49.80	0.018
Panchagarh	557773	Panchagarhsadar	49.10	0.029
Panchagarh	557790	Tentulia	48.70	0.041
Rangpur	558503	Badarganj	50.70	0.016
Rangpur	558527	Gangachara	51.10	0.017
Rangpur	558542	Kaunia	50.70	0.021
Rangpur	558549	Rangpur Sadar	49.80	0.020

District	Upazila Code	Upazila_Name	SAE Estimate (%)	Std Error of the Proportion
Rangpur	558558	Mithapukur	51.10	0.020
Rangpur	558573	Pirgachha	51.70	0.018
Rangpur	558576	Pirganj	51.30	0.024
Rangpur	558592	Taraganj	50.40	0.015
Thakurgaon	559408	Baliadangi	50.20	0.018
Thakurgaon	559451	Haripur	50.60	0.021
Thakurgaon	559482	Pirganj	50.50	0.025
Thakurgaon	559486	Ranisankail	50.20	0.022
Thakurgaon	559494	Thakurgaonsadar	50.10	0.017
Habiganj	603602	Ajmiriganj	41.00	0.029
Habiganj	603605	Bahubal	41.00	0.035
Habiganj	603611	Baniachong	40.60	0.028
Habiganj	603626	Chunarughat	42.10	0.031
Habiganj	603644	Habiganjsadar	40.60	0.029
Habiganj	603668	Lakhai	42.80	0.017
Habiganj	603671	Madhabpur	41.80	0.026
Habiganj	603677	Nabiganj	40.20	0.032
Habiganj	603687	Shayestaganj	40.80	0.032
Maulvibazar	605814	Barlekha	41.10	0.031
Maulvibazar	605835	Juri	41.30	0.027
Maulvibazar	605856	Kamalganj	42.20	0.026
Maulvibazar	605865	Kulaura	41.80	0.034
Maulvibazar	605874	Maulvibazarsadar	40.30	0.031
Maulvibazar	605880	Rajnagar	41.60	0.033
Maulvibazar	605883	Sreemangal	41.40	0.023
Sunamganj	609018	Bishwambarpur	41.20	0.033
Sunamganj	609023	Chhatak	39.20	0.035
Sunamganj	609027	Dakshin Sunamganj	39.80	0.028
Sunamganj	609029	Derai	40.00	0.031
Sunamganj	609032	Dharampasha	40.10	0.033
Sunamganj	609033	Dowarabazar	41.40	0.036
Sunamganj	609047	Jagannathpur	38.30	0.033
Sunamganj	609050	Jamalganj	39.50	0.032
Sunamganj	609063	Madhyanagar	NA	NA
Sunamganj	609086	Sulla	38.70	0.032
Sunamganj	609089	Sunamganjsadar	40.10	0.031
Sunamganj	609092	Tahirpur	Na	Na
Sylhet	609108	Balaganj	41.00	0.037
Sylhet	609117	Beani Bazar	41.10	0.029
Sylhet	609120	Bishwanath	39.60	0.039
Sylhet	609127	Companiganj	40.90	0.029

District	Upazila Code	Upazila_Name	SAE Estimate (%)	Std Error of the Proportion
Sylhet	609131	Dakshin Surma	39.80	0.032
Sylhet	609135	Fenchuganj	42.80	0.029
Sylhet	609138	Golapganj	40.80	0.028
Sylhet	609141	Gowainghat	40.90	0.032
Sylhet	609153	Jaintiapur	41.50	0.032
Sylhet	609159	Kanaighat	42.80	0.031
Sylhet	609160	Osmaninagar	40.00	0.036
Sylhet	609162	Sylhet Sadar	41.30	0.022
Sylhet	609194	Zakiganj	41.20	0.033

*Note: NA means not available. NA- for the upazila whose codes are not available in the census and we cannot generate its SAE estimates.*

**Table C.6 Comparison of Estimates of Child Marriage Before Age 15 in MICS 2019 at Upazila Level**

District	Upazila Code	Upazila Name	SAE Estimate (%)	Std Error of the Proportion
Barguna	100409	Amtali	15.40	0.009
Barguna	100419	Bamna	14.70	0.009
Barguna	100428	Bargunasadar	15.20	0.010
Barguna	100447	Betagi	15.80	0.010
Barguna	100485	Patharghata	15.00	0.008
Barguna	100490	Taltali	14.80	0.012
Barishal	100602	Agailjhara	15.40	0.009
Barishal	100603	Babuganj	16.00	0.010
Barishal	100607	Bakerganj	16.30	0.009
Barishal	100610	Banaripara	15.30	0.009
Barishal	100632	Gaurnadi	15.40	0.009
Barishal	100636	Hizla	15.80	0.008
Barishal	100651	Barishalsadar	14.80	0.008
Barishal	100662	Mehendiganj	15.80	0.009
Barishal	100669	Muladi	16.90	0.009
Barishal	100694	Wazirpur	15.50	0.008
Bhola	100918	Bhola Sadar	15.50	0.006
Bhola	100921	Borhanuddin	16.10	0.006
Bhola	100925	Char Fasson	15.80	0.005
Bhola	100929	Daulat Khan	16.00	0.006
Bhola	100954	Lalmohan	16.00	0.006
Bhola	100965	Manpura	14.80	0.008
Bhola	100991	Tazumuddin	14.70	0.008
Jhalokati	104240	Jhalokathisadar	15.70	0.011
Jhalokati	104243	Kathalia	15.80	0.008
Jhalokati	104273	Nalchity	16.70	0.010
Jhalokati	104284	Rajapur	16.80	0.009
Patuakhali	107838	Bauphal	16.20	0.007
Patuakhali	107852	Dashmina	15.40	0.008
Patuakhali	107855	Dumki	15.80	0.008
Patuakhali	107857	Galachipa	15.30	0.008
Patuakhali	107866	Kalapara	14.90	0.010
Patuakhali	107876	Mirzaganj	15.70	0.009
Patuakhali	107895	Patuakhali Sadar	15.30	0.008
Patuakhali	107897	Rangabali	15.00	0.010
Pirojpur	107914	Bhandaria	15.70	0.007
Pirojpur	107947	Kawkhali	14.80	0.011
Pirojpur	107958	Mathbaria	15.00	0.007

District	Upazila Code	Upazila Name	SAE Estimate (%)	Std Error of the Proportion
Pirojpur	107976	Nazirpur	14.70	0.011
Pirojpur	107980	Pirojpur Sadar	15.10	0.009
Pirojpur	107987	Nesarabad	14.90	0.008
Pirojpur	107990	Indurkani	16.10	0.011
Bandarban	200304	Alikadam	14.60	0.017
Bandarban	200314	Bandarban Sadar	14.50	0.016
Bandarban	200351	Lama	15.10	0.015
Bandarban	200373	Naikhongchhari	15.10	0.018
Bandarban	200389	Rowangchhari	14.40	0.018
Bandarban	200391	Ruma	14.80	0.020
Bandarban	200395	Thanchi	14.60	0.020
Brahmanbaria	201202	Akhaura	15.90	0.012
Brahmanbaria	201204	Banchharampur	16.20	0.008
Brahmanbaria	201207	Bijoy Nagar	15.40	0.010
Brahmanbaria	201213	Brahmanbaria Sadar	14.90	0.007
Brahmanbaria	201233	Ashuganj	15.40	0.007
Brahmanbaria	201263	Kasba	16.10	0.010
Brahmanbaria	201285	Nabinagar	16.60	0.008
Brahmanbaria	201290	Nasirnagar	15.30	0.007
Brahmanbaria	201294	Sarail	15.80	0.008
Chandpur	201322	Chandpur Sadar	15.50	0.008
Chandpur	201345	Faridganj	16.60	0.008
Chandpur	201347	Haimchar	16.10	0.009
Chandpur	201349	Hajiganj	15.70	0.009
Chandpur	201358	Kachua	16.00	0.009
Chandpur	201376	Matlab Dakshin	16.30	0.010
Chandpur	201379	Matlab Uttar	15.40	0.011
Chandpur	201395	Shahrasti	15.90	0.010
Chattogram	201502	Akbarshah	13.90	0.005
Chattogram	201504	Anowara	14.90	0.007
Chattogram	201506	Bayejidbostami	14.20	0.004
Chattogram	201508	Banshkhal	15.60	0.005
Chattogram	201510	Bakalia	14.30	0.004
Chattogram	201512	Boalkhal	13.90	0.005
Chattogram	201516	Chalkbazar	13.50	0.003
Chattogram	201518	Chandanaish	14.30	0.006
Chattogram	201519	Chandgaon	13.90	0.004
Chattogram	201520	Chattogram Port	13.70	0.004
Chattogram	201528	Double Mooring	13.70	0.004
Chattogram	201531	Epz	13.00	0.005

District	Upazila Code	Upazila Name	SAE Estimate (%)	Std Error of the Proportion
Chattogram	201533	Fatikchhari	14.60	0.007
Chattogram	201535	Halishahar	13.80	0.005
Chattogram	201537	Hathazari	14.00	0.004
Chattogram	201539	Karnaphuli	13.80	0.005
Chattogram	201541	Kotwali	13.80	0.005
Chattogram	201543	Khulshi	14.30	0.005
Chattogram	201547	Lohagara	15.20	0.005
Chattogram	201553	Mirsharai	14.90	0.008
Chattogram	201555	Pahartali	13.90	0.004
Chattogram	201557	Panchlaish	14.20	0.004
Chattogram	201561	Patiya	14.00	0.006
Chattogram	201565	Patenga	13.30	0.004
Chattogram	201570	Rangunia	15.00	0.008
Chattogram	201574	Raozan	14.40	0.006
Chattogram	201577	Sadarghat	13.50	0.005
Chattogram	201578	Sandwip	16.10	0.005
Chattogram	201582	Satkania	15.20	0.006
Chattogram	201586	Sitakunda	13.60	0.006
Cumilla	201909	Barura	16.20	0.010
Cumilla	201915	Brahmanpara	16.30	0.008
Cumilla	201918	Burichang	15.40	0.009
Cumilla	201927	Chandina	15.90	0.009
Cumilla	201931	Chauddagam	15.90	0.012
Cumilla	201933	Sadar Dakshin	15.00	0.011
Cumilla	201936	Daudkandi	15.10	0.010
Cumilla	201940	Debidwar	16.20	0.008
Cumilla	201954	Homna	15.40	0.011
Cumilla	201967	Adarsha Sadar	14.60	0.007
Cumilla	201972	Laksam	15.90	0.010
Cumilla	201973	Lalmal	16.20	0.012
Cumilla	201974	Manoharganj	16.60	0.011
Cumilla	201975	Meghna	14.10	0.010
Cumilla	201981	Muradnagar	16.30	0.009
Cumilla	201987	Nangalkot	16.90	0.011
Cumilla	201994	Titas	16.00	0.012
Cox's Bazar	202216	Chakaria	15.00	0.008
Cox's Bazar	202224	Cox's Bazar Sadar	14.40	0.009
Cox's Bazar	202232	Eidgaon	NA	NA
Cox's Bazar	202245	Kutubdia	NA	NA
Cox's Bazar	202249	Maheshkhali	14.60	0.009

District	Upazila Code	Upazila Name	SAE Estimate (%)	Std Error of the Proportion
Cox's Bazar	202256	Pekua	15.80	0.012
Cox's Bazar	202266	Ramu	14.60	0.007
Cox's Bazar	202290	Teknaf	15.20	0.010
Cox's Bazar	202294	Ukhiya	15.20	0.008
Feni	203014	Chhagalnaiya	14.90	0.008
Feni	203025	Daganbhuiyan	15.80	0.009
Feni	203029	Fenisadar	14.60	0.007
Feni	203041	Fulgazi	14.10	0.010
Feni	203051	Parshuram	15.30	0.012
Feni	203094	Sonagazi	15.40	0.007
Khagrachhari	204643	Dighinala	14.60	0.013
Khagrachhari	204647	Guimara	14.80	0.017
Khagrachhari	204649	Khagrachharisadar	14.70	0.014
Khagrachhari	204661	Lakshmichhari	14.80	0.019
Khagrachhari	204665	Mahalchhari	14.60	0.016
Khagrachhari	204667	Manikchhari	15.80	0.013
Khagrachhari	204670	Matiranga	15.30	0.015
Khagrachhari	204677	Panchhari	14.60	0.015
Khagrachhari	204680	Ramgarh	14.50	0.013
Lakshmipur	205133	Kamalnagar	16.20	0.005
Lakshmipur	205143	Lakshmipursadar	16.20	0.007
Lakshmipur	205158	Roypur	15.60	0.007
Lakshmipur	205165	Ramganj	16.30	0.009
Lakshmipur	205173	Ramgati	16.40	0.006
Noakhali	207507	Begumganj	15.90	0.006
Noakhali	207510	Chatkhil	16.10	0.009
Noakhali	207521	Companiganj	15.90	0.006
Noakhali	207536	Hatiya	15.80	0.005
Noakhali	207547	Kabirhat	16.20	0.008
Noakhali	207580	Senbagh	15.90	0.007
Noakhali	207583	Sonaimuri	16.40	0.008
Noakhali	207585	Subarnachar	15.50	0.006
Noakhali	207587	Noakhali Sadar	16.20	0.007
Rangamati	208407	Baghaichhari	14.60	0.016
Rangamati	208421	Barkal	14.30	0.016
Rangamati	208425	Kawkhali	14.70	0.015
Rangamati	208429	Belaichhari	14.40	0.014
Rangamati	208436	Kaptai	14.60	0.013
Rangamati	208447	Juraichhari	14.70	0.019
Rangamati	208458	Langadu	14.80	0.012



District	Upazila Code	Upazila Name	SAE Estimate (%)	Std Error of the Proportion
Rangamati	208475	Naniarchar	13.90	0.016
Rangamati	208478	Rajasthali	14.60	0.017
Rangamati	208487	Rangamati Sadar	14.10	0.010
Dhaka	302602	Adabor	14.30	0.005
Dhaka	302604	Badda	13.80	0.004
Dhaka	302605	Bangshal	12.20	0.005
Dhaka	302606	Biman Bandar	10.70	0.011
Dhaka	302607	Banani	14.30	0.004
Dhaka	302608	Cantonment	14.10	0.005
Dhaka	302609	Chak Bazar	12.80	0.006
Dhaka	302610	Dakshinkhan	14.10	0.004
Dhaka	302611	Darus Salam	14.40	0.004
Dhaka	302612	Demra	14.40	0.004
Dhaka	302614	Dhamrai	14.30	0.010
Dhaka	302616	Dhanmondi	15.10	0.005
Dhaka	302618	Dohar	15.50	0.009
Dhaka	302621	Bhasantek	14.50	0.004
Dhaka	302622	Bhatara	13.90	0.003
Dhaka	302624	Gendaria	13.70	0.006
Dhaka	302626	Gulshan	14.50	0.012
Dhaka	302627	Hatirjheel	14.10	0.003
Dhaka	302628	Hazaribagh	14.30	0.005
Dhaka	302629	Jatrabari	14.20	0.003
Dhaka	302630	Kafrul	14.30	0.003
Dhaka	302632	Kadamtali	13.90	0.004
Dhaka	302633	Kalabagan	13.60	0.005
Dhaka	302634	Kamrangir Char	14.00	0.005
Dhaka	302636	Khilgaon	14.20	0.003
Dhaka	302637	Khilkhet	13.80	0.006
Dhaka	302638	Keraniganj	13.90	0.006
Dhaka	302640	Kotwali	12.10	0.009
Dhaka	302642	Lalbagh	13.00	0.004
Dhaka	302648	Mirpur	14.00	0.003
Dhaka	302650	Mohammadpur	14.20	0.004
Dhaka	302654	Motijheel	14.00	0.006
Dhaka	302657	Mugda	14.10	0.004
Dhaka	302662	Nawabganj	15.30	0.011
Dhaka	302663	New Market	9.40	0.006
Dhaka	302664	Pallabi	14.30	0.006
Dhaka	302665	Paltan	12.50	0.007

District	Upazila Code	Upazila Name	SAE Estimate (%)	Std Error of the Proportion
Dhaka	302666	Ramna	14.30	0.004
Dhaka	302667	Rampura	13.90	0.004
Dhaka	302668	Sabujbagh	14.00	0.005
Dhaka	302670	Rupnagar	14.20	0.003
Dhaka	302672	Savar	13.70	0.004
Dhaka	302673	Shahjahanpur	14.30	0.005
Dhaka	302674	Shah Ali	14.10	0.006
Dhaka	302675	Shahbagh	7.50	0.005
Dhaka	302676	Shyampur	14.20	0.004
Dhaka	302680	Sher-E-Bangla Nagar	13.20	0.004
Dhaka	302688	Sutrapur	13.50	0.007
Dhaka	302690	Tejgaon	12.90	0.004
Dhaka	302692	Tejgaon Ind. Area	14.10	0.005
Dhaka	302693	Turag	13.80	0.004
Dhaka	302694	Uttrapashchim	14.70	0.005
Dhaka	302695	Uttara	14.70	0.008
Dhaka	302696	Uttar Khan	14.10	0.008
Dhaka	302698	Wari	13.30	0.007
Faridpur	302903	Alfadanga	15.80	0.011
Faridpur	302910	Bhanga	15.50	0.011
Faridpur	302918	Boalmari	15.00	0.011
Faridpur	302921	Char Bhadrasan	15.60	0.013
Faridpur	302947	Faridpur Sadar	14.50	0.008
Faridpur	302956	Madhukhali	14.40	0.011
Faridpur	302962	Nagarkanda	14.90	0.011
Faridpur	302984	Sadarpur	15.60	0.013
Faridpur	302990	Saltha	15.10	0.012
Gazipur	303315	Basan	12.10	0.004
Gazipur	303318	Gachha	14.00	0.003
Gazipur	303330	Gazipur Sadar	14.20	0.005
Gazipur	303332	Kaliakair	13.40	0.005
Gazipur	303334	Kaliganj	14.70	0.008
Gazipur	303336	Kapasia	15.70	0.008
Gazipur	303340	Kashimpur	12.70	0.005
Gazipur	303345	Konabari	11.90	0.003
Gazipur	303350	Pubail	13.80	0.010
Gazipur	303374	Joydebpur	13.90	0.004
Gazipur	303386	Sreepur	14.40	0.006
Gazipur	303390	Tongipashchim	13.90	0.004
Gazipur	303393	Tongipurba	14.30	0.003

District	Upazila Code	Upazila Name	SAE Estimate (%)	Std Error of the Proportion
Gopalganj	303532	Gopalganj Sadar	14.90	0.009
Gopalganj	303543	Kashiani	15.60	0.010
Gopalganj	303551	Kotalipara	14.90	0.011
Gopalganj	303558	Muksudpur	15.20	0.010
Gopalganj	303591	Tungipara	14.90	0.011
Kishoregonj	304802	Austagram	14.70	0.007
Kishoregonj	304806	Bajitpur	15.70	0.010
Kishoregonj	304811	Bhairab	15.10	0.007
Kishoregonj	304827	Hossainpur	15.90	0.010
Kishoregonj	304833	Itna	14.70	0.008
Kishoregonj	304842	Karimganj	15.60	0.010
Kishoregonj	304845	Katiadi	16.00	0.009
Kishoregonj	304849	Kishoreganj Sadar	15.40	0.009
Kishoregonj	304854	Kuliar Char	16.10	0.010
Kishoregonj	304859	Mithamain	14.40	0.011
Kishoregonj	304876	Nikli	14.90	0.009
Kishoregonj	304879	Pakundia	16.00	0.009
Kishoregonj	304892	Tarail	15.40	0.009
Madaripur	305418	Dasar	NA	NA
Madaripur	305440	Kalkini	16.00	0.011
Madaripur	305454	Madaripur Sadar	Na	Na
Madaripur	305480	Rajoir	15.00	0.010
Madaripur	305487	Shibchar	15.50	0.013
Manikganj	305610	Daulatpur	15.90	0.010
Manikganj	305622	Ghior	14.50	0.011
Manikganj	305628	Harirampur	15.80	0.013
Manikganj	305646	Manikganjsadar	14.80	0.011
Manikganj	305670	Saturia	14.80	0.011
Manikganj	305678	Shibalaya	14.60	0.012
Manikganj	305682	Singair	15.30	0.010
Munshiganj	305924	Gazaria	15.00	0.011
Munshiganj	305944	Lohajang	15.40	0.009
Munshiganj	305956	Munshiganjsadar	14.40	0.010
Munshiganj	305974	Serajdikhan	14.50	0.010
Munshiganj	305984	Sreenagar	15.00	0.008
Munshiganj	305994	Tongibari	14.90	0.010
Narayanganj	306702	Araihazar	14.70	0.010
Narayanganj	306704	Sonargaon	14.40	0.010
Narayanganj	306706	Bandar	14.10	0.008
Narayanganj	306758	Narayanganj Sadar	14.10	0.004

District	Upazila Code	Upazila Name	SAE Estimate (%)	Std Error of the Proportion
Narayanganj	306768	Rupganj	14.20	0.006
Narsingdi	306807	Belabo	15.60	0.008
Narsingdi	306852	Manohardi	16.10	0.009
Narsingdi	306860	Narsingdisadar	14.60	0.007
Narsingdi	306863	Palash	14.80	0.009
Narsingdi	306864	Roypura	15.90	0.008
Narsingdi	306876	Shibpur	15.50	0.010
Rajbari	308207	Baliakandi	14.10	0.012
Rajbari	308229	Goalanda	14.60	0.013
Rajbari	308247	Kalukhali	14.70	0.010
Rajbari	308273	Pangsha	14.80	0.010
Rajbari	308276	Rajbari Sadar	14.90	0.009
Shariatpur	308614	Bhedarganj	15.90	0.013
Shariatpur	308625	Damudya	16.10	0.012
Shariatpur	308636	Gosairhat	16.30	0.012
Shariatpur	308665	Naria	15.40	0.010
Shariatpur	308669	Shariatpursadar	15.20	0.011
Shariatpur	308694	Zajira	15.40	0.012
Tangail	309309	Basail	15.40	0.009
Tangail	309319	Bhuapur	16.00	0.010
Tangail	309323	Delduar	14.60	0.010
Tangail	309325	Dhanbari	15.20	0.009
Tangail	309328	Ghatail	15.40	0.010
Tangail	309338	Gopalpur	14.90	0.010
Tangail	309347	Kalihati	15.10	0.009
Tangail	309357	Madhupur	15.20	0.008
Tangail	309366	Mirzapur	14.70	0.007
Tangail	309376	Nagarpur	15.60	0.010
Tangail	309385	Sakhipur	16.10	0.007
Tangail	309395	Tangail Sadar	14.50	0.008
Bagerhat	400108	Bagerhat Sadar	17.00	0.010
Bagerhat	400114	Chitalmari	17.30	0.012
Bagerhat	400134	Fakirhat	16.70	0.010
Bagerhat	400138	Kachua	17.30	0.013
Bagerhat	400156	Mollahat	18.10	0.011
Bagerhat	400158	Mongla	17.60	0.010
Bagerhat	400160	Morrelganj	18.30	0.009
Bagerhat	400173	Rampal	17.20	0.010
Bagerhat	400177	Sarankhola	18.60	0.009
Chuadanga	401807	Alamdanga	16.90	0.010

District	Upazila Code	Upazila Name	SAE Estimate (%)	Std Error of the Proportion
Chuadanga	401823	Chuadangasadar	16.90	0.010
Chuadanga	401831	Damurhuda	17.30	0.008
Chuadanga	401855	Jibannagar	17.00	0.009
Jashore	404104	Abhaynagar	16.90	0.008
Jashore	404109	Bagherpara	17.40	0.012
Jashore	404111	Chaugachha	17.30	0.011
Jashore	404123	Jhikargachha	17.60	0.010
Jashore	404138	Keshabpur	17.30	0.010
Jashore	404147	Jashoresadar	16.80	0.008
Jashore	404161	Manirampur	17.40	0.009
Jashore	404190	Sharsha	17.10	0.009
Jhenaidah	404414	Harinakunda	16.80	0.010
Jhenaidah	404419	Jhenaidahsadar	17.00	0.010
Jhenaidah	404433	Kaliganj	17.10	0.010
Jhenaidah	404442	Kotchandpur	16.90	0.011
Jhenaidah	404471	Maheshpur	17.10	0.010
Jhenaidah	404480	Shailkupa	16.30	0.011
Khulna	404712	Batiaghata	16.60	0.011
Khulna	404717	Dacope	17.00	0.010
Khulna	404721	Daulatpur	17.40	0.008
Khulna	404730	Dumuria	16.50	0.009
Khulna	404740	Dighalia	16.90	0.007
Khulna	404745	Khalishpur	17.30	0.007
Khulna	404748	Khan Jahan Ali	16.90	0.007
Khulna	404751	Khulna Sadar	17.50	0.006
Khulna	404753	Koyra	17.80	0.011
Khulna	404764	Paikgachha	17.00	0.009
Khulna	404769	Phultala	17.00	0.008
Khulna	404775	Rupsa	16.80	0.008
Khulna	404785	Sonadanga	16.60	0.007
Khulna	404794	Terokhada	17.70	0.011
Khulna	404799	Arangghata	16.60	0.014
Kushtia	405015	Bheramara	17.20	0.009
Kushtia	405039	Daulatpur	17.50	0.008
Kushtia	405063	Khoksa	17.70	0.011
Kushtia	405071	Kumarkhali	17.30	0.009
Kushtia	405079	Kushtiasadar	16.60	0.007
Kushtia	405094	Mirpur	16.70	0.009
Magura	405557	Magurasadar	17.10	0.010
Magura	405566	Mohammadpur	17.70	0.012

District	Upazila Code	Upazila Name	SAE Estimate (%)	Std Error of the Proportion
Magura	405585	Shalikha	17.00	0.010
Magura	405595	Sreepur	17.20	0.011
Meherpur	405747	Gangni	17.60	0.008
Meherpur	405760	Mujib Nagar	17.40	0.008
Meherpur	405787	Meherpursadar	17.30	0.008
Narail	406528	Kalia	18.00	0.012
Narail	406552	Lohagara	17.90	0.012
Narail	406576	Narailsadar	17.10	0.011
Satkhira	408704	Assasuni	17.10	0.010
Satkhira	408725	Debhata	17.00	0.012
Satkhira	408743	Kalaroa	17.30	0.009
Satkhira	408747	Kaliganj	17.50	0.010
Satkhira	408782	Satkhirasadar	17.10	0.008
Satkhira	408786	Shyamnagar	18.10	0.010
Satkhira	408790	Tala	17.10	0.010
Jamalpur	453907	Bakshiganj	15.30	0.011
Jamalpur	453915	Dewanganj	15.60	0.011
Jamalpur	453929	Islampur	15.30	0.007
Jamalpur	453936	Jamalpur Sadar	15.00	0.009
Jamalpur	453958	Madarganj	15.30	0.008
Jamalpur	453961	Melandaha	15.20	0.009
Jamalpur	453985	Sarishabari	15.20	0.008
Mymensingh	456113	Bhaluka	14.50	0.005
Mymensingh	456116	Dhobaura	15.80	0.011
Mymensingh	456120	Fulbaria	15.10	0.006
Mymensingh	456122	Gaffargaon	15.60	0.007
Mymensingh	456123	Gauripur	14.90	0.010
Mymensingh	456124	Haluaghat	15.40	0.009
Mymensingh	456131	Ishwarganj	15.10	0.010
Mymensingh	456152	Mymensingh Sadar	14.50	0.006
Mymensingh	456165	Muktagachha	14.80	0.008
Mymensingh	456172	Nandail	15.50	0.009
Mymensingh	456181	Phulpur	15.20	0.009
Mymensingh	456188	Tarakanda	14.90	0.009
Mymensingh	456194	Trishal	15.50	0.008
Netrakona	457204	Atpara	15.00	0.011
Netrakona	457209	Barhatta	14.80	0.012
Netrakona	457218	Durgapur	15.10	0.011
Netrakona	457238	Khaliajuri	13.80	0.010
Netrakona	457240	Kalmakanda	15.20	0.012

District	Upazila Code	Upazila Name	SAE Estimate (%)	Std Error of the Proportion
Netrakona	457247	Kendua	15.20	0.011
Netrakona	457256	Madan	14.50	0.010
Netrakona	457263	Mohanganj	14.50	0.011
Netrakona	457274	Netrokonasadar	14.70	0.011
Netrakona	457283	Purbadhala	15.50	0.011
Sherpur	458937	Jhenaigati	15.30	0.009
Sherpur	458967	Nakla	15.70	0.009
Sherpur	458970	Nalitabari	15.00	0.008
Sherpur	458988	Sherpursadar	15.00	0.007
Sherpur	458990	Sreebardi	15.30	0.009
Bogura	501006	Adamdighi	19.90	0.013
Bogura	501020	Bogurasadar	19.00	0.008
Bogura	501027	Dhunat	20.80	0.011
Bogura	501033	Dhupchanchia	20.50	0.015
Bogura	501040	Gabtali	20.30	0.011
Bogura	501054	Kahaloo	20.00	0.014
Bogura	501067	Nandigram	20.50	0.014
Bogura	501081	Sariakandi	20.40	0.010
Bogura	501085	Shajahanpur	20.00	0.010
Bogura	501088	Sherpur	19.70	0.013
Bogura	501094	Shibganj	20.30	0.013
Bogura	501095	Sonatola	21.10	0.012
Joypurhat	503813	Akkelpur	20.30	0.013
Joypurhat	503847	Joypurhatsadar	19.30	0.011
Joypurhat	503858	Kalai	19.80	0.014
Joypurhat	503861	Khetlal	19.70	0.014
Joypurhat	503874	Panchbibi	19.50	0.013
Naogaon	506403	Atrai	19.70	0.012
Naogaon	506406	Badalgachhi	20.00	0.013
Naogaon	506428	Dhamoirhat	19.40	0.013
Naogaon	506447	Manda	19.90	0.010
Naogaon	506450	Mahadebpur	19.40	0.011
Naogaon	506460	Naogaonsadar	19.70	0.011
Naogaon	506469	Niamatpur	19.60	0.014
Naogaon	506475	Patnitala	19.20	0.014
Naogaon	506479	Porsha	19.50	0.017
Naogaon	506485	Raninagar	19.90	0.012
Naogaon	506486	Sapahar	19.40	0.015
Natore	506909	Bagatipara	19.70	0.014
Natore	506915	Baraigram	19.70	0.011

District	Upazila Code	Upazila Name	SAE Estimate (%)	Std Error of the Proportion
Natore	506941	Gurudaspur	19.60	0.009
Natore	506944	Lalpur	19.50	0.011
Natore	506955	Naldanga	19.70	0.012
Natore	506963	Natoresadar	19.80	0.011
Natore	506991	Singra	19.70	0.014
Chapainawabganj	507018	Bholahat	20.60	0.013
Chapainawabganj	507037	Gomastapur	19.90	0.012
Chapainawabganj	507056	Nachole	19.80	0.014
Chapainawabganj	507066	Chapainwabganjsadar	20.90	0.009
Chapainawabganj	507088	Shibganj	19.80	0.011
Pabna	507605	Atgharia	19.80	0.012
Pabna	507616	Bera	20.10	0.012
Pabna	507619	Bhangura	20.00	0.014
Pabna	507622	Chatmohar	19.50	0.011
Pabna	507633	Faridpur	19.50	0.011
Pabna	507639	Ishwardi	19.70	0.008
Pabna	507655	Pabna Sadar	20.30	0.009
Pabna	507672	Santhia	19.80	0.010
Pabna	507683	Sujanagar	20.10	0.010
Rajshahi	508110	Bagha	19.80	0.011
Rajshahi	508112	Baghmara	19.70	0.013
Rajshahi	508122	Boalia	18.60	0.008
Rajshahi	508124	Chandrima	19.90	0.010
Rajshahi	508125	Charghat	19.90	0.011
Rajshahi	508131	Durgapur	19.50	0.011
Rajshahi	508134	Godagari	19.70	0.013
Rajshahi	508138	Kashiadanga	19.70	0.013
Rajshahi	508140	Matihar	12.00	0.005
Rajshahi	508153	Mohanpur	19.50	0.012
Rajshahi	508172	Paba	19.60	0.011
Rajshahi	508182	Puthia	19.50	0.013
Rajshahi	508185	Rajpara	18.00	0.008
Rajshahi	508190	Shah Makhdum	19.10	0.016
Rajshahi	508194	Tanore	19.90	0.013
Sirajganj	508811	Belkuchi	19.50	0.008
Sirajganj	508827	Chauhali	20.30	0.009
Sirajganj	508844	Kamarkhanda	20.60	0.012
Sirajganj	508850	Kazipur	20.70	0.010
Sirajganj	508861	Royganj	20.00	0.011
Sirajganj	508867	Shahjadpur	19.70	0.010



District	Upazila Code	Upazila Name	SAE Estimate (%)	Std Error of the Proportion
Sirajganj	508878	Sirajganj Sadar	20.20	0.010
Sirajganj	508889	Tarash	20.10	0.013
Sirajganj	508894	Ullapara	19.80	0.011
Dinajpur	552710	Birampur	14.50	0.011
Dinajpur	552712	Birganj	14.10	0.008
Dinajpur	552717	Biral	14.30	0.010
Dinajpur	552721	Bochaganj	14.10	0.010
Dinajpur	552730	Chirirbandar	14.20	0.007
Dinajpur	552738	Fulbari	14.10	0.009
Dinajpur	552743	Ghoraghat	15.00	0.011
Dinajpur	552747	Hakimpur	14.70	0.011
Dinajpur	552756	Kaharole	13.90	0.010
Dinajpur	552760	Khansama	13.80	0.007
Dinajpur	552764	Dinajpur Sadar	13.60	0.007
Dinajpur	552769	Nawabganj	14.50	0.010
Dinajpur	552777	Parbatipur	14.50	0.008
Gaibandha	553221	Fulchhari	15.10	0.009
Gaibandha	553224	Gaibandhasadar	15.30	0.006
Gaibandha	553230	Gobindaganj	15.10	0.009
Gaibandha	553267	Palashbari	15.40	0.009
Gaibandha	553282	Sadullapur	15.50	0.009
Gaibandha	553288	Saghata	15.70	0.008
Gaibandha	553291	Sundarganj	15.40	0.007
Kurigram	554906	Bhurungamari	15.00	0.008
Kurigram	554908	Char Rajibpur	16.50	0.014
Kurigram	554909	Chilmari	16.10	0.010
Kurigram	554918	Phulbari	15.20	0.011
Kurigram	554952	Kurigramsadar	15.40	0.012
Kurigram	554961	Nageshwari	15.70	0.011
Kurigram	554977	Rajarhat	15.60	0.011
Kurigram	554979	Raumari	16.00	0.012
Kurigram	554994	Ulipur	15.90	0.010
Lalmonirhat	555202	Aditmari	14.50	0.007
Lalmonirhat	555233	Hatibandha	14.80	0.006
Lalmonirhat	555239	Kaliganj	14.90	0.006
Lalmonirhat	555255	Lalmonirhatsadar	14.90	0.008
Lalmonirhat	555270	Patgram	14.40	0.006
Nilphamari	557312	Dimla	14.40	0.006
Nilphamari	557315	Domar	14.40	0.006
Nilphamari	557336	Jaldhaka	14.60	0.006

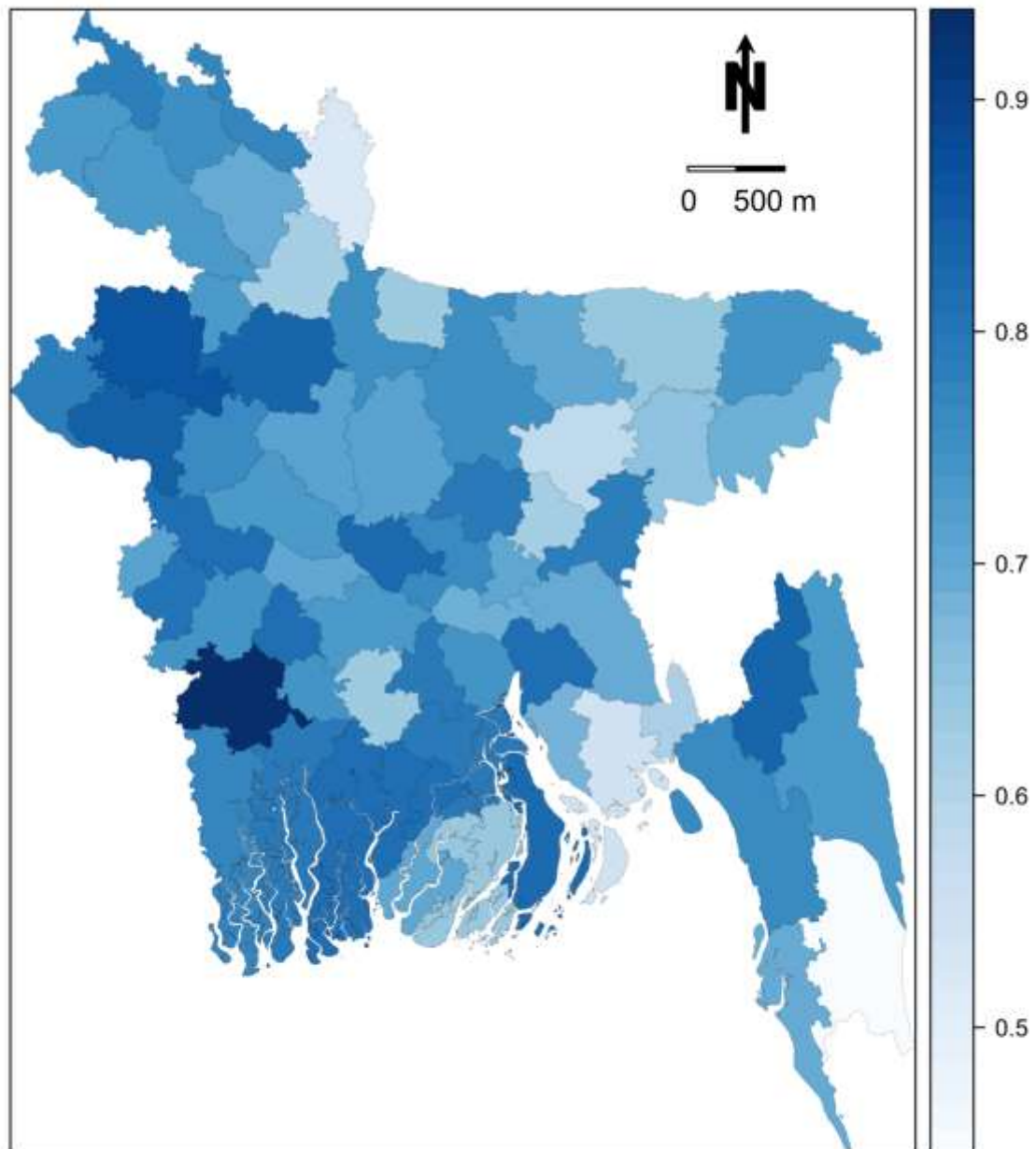
District	Upazila Code	Upazila Name	SAE Estimate (%)	Std Error of the Proportion
Nilphamari	557345	Kishoreganj	14.80	0.005
Nilphamari	557364	Nilphamarisadar	14.30	0.006
Nilphamari	557385	Saidpur	14.10	0.006
Panchagarh	557704	Atwari	14.00	0.009
Panchagarh	557725	Boda	14.10	0.011
Panchagarh	557734	Debiganj	14.20	0.007
Panchagarh	557773	Panchagarhsadar	14.10	0.011
Panchagarh	557790	Tentulia	13.70	0.014
Rangpur	558503	Badarganj	14.50	0.006
Rangpur	558527	Gangachara	14.50	0.007
Rangpur	558542	Kaunia	15.00	0.008
Rangpur	558549	Rangpur Sadar	14.10	0.007
Rangpur	558558	Mithapukur	14.90	0.008
Rangpur	558573	Pirgachha	15.50	0.007
Rangpur	558576	Pirganj	15.20	0.009
Rangpur	558592	Taraganj	14.20	0.006
Thakurgaon	559408	Baliadangi	13.80	0.007
Thakurgaon	559451	Hariपुर	14.50	0.008
Thakurgaon	559482	Pirganj	14.00	0.008
Thakurgaon	559486	Ranisankail	14.10	0.008
Thakurgaon	559494	Thakurgaonsadar	14.10	0.007
Habiganj	603602	Ajmiriganj	11.40	0.010
Habiganj	603605	Bahubal	11.40	0.012
Habiganj	603611	Baniachong	11.50	0.009
Habiganj	603626	Chunarughat	11.80	0.010
Habiganj	603644	Habiganjsadar	11.30	0.010
Habiganj	603668	Lakhai	12.20	0.007
Habiganj	603671	Madhabpur	11.80	0.009
Habiganj	603677	Nabiganj	11.40	0.010
Habiganj	603687	Shayestaganj	11.40	0.011
Maulvibazar	605814	Barlekha	11.50	0.010
Maulvibazar	605835	Juri	11.30	0.009
Maulvibazar	605856	Kamalganj	11.60	0.008
Maulvibazar	605865	Kulaura	11.60	0.011
Maulvibazar	605874	Maulvibazarsadar	10.80	0.010
Maulvibazar	605880	Rajnagar	11.30	0.010
Maulvibazar	605883	Sreemangal	11.10	0.007
Sunamganj	609018	Bishwambarpur	11.70	0.011
Sunamganj	609023	Chhatak	11.40	0.011
Sunamganj	609027	Dakshin Sunamganj	11.40	0.009

District	Upazila Code	Upazila Name	SAE Estimate (%)	Std Error of the Proportion
Sunamganj	609029	Derai	11.10	0.010
Sunamganj	609032	Dharampasha	11.10	0.010
Sunamganj	609033	Dowarabazar	11.90	0.012
Sunamganj	609047	Jagannathpur	11.30	0.011
Sunamganj	609050	Jamalganj	11.20	0.011
Sunamganj	609063	Madhyanagar	NA	NA
Sunamganj	609086	Sulla	10.30	0.010
Sunamganj	609089	Sunamganjsadar	11.50	0.010
Sunamganj	609092	Tahirpur	NA	NA
Sylhet	609108	Balaganj	11.20	0.012
Sylhet	609117	Beani Bazar	11.00	0.010
Sylhet	609120	Bishwanath	11.00	0.012
Sylhet	609127	Companiganj	11.00	0.009
Sylhet	609131	Dakshin Surma	10.60	0.010
Sylhet	609135	Fenchuganj	11.70	0.010
Sylhet	609138	Golapganj	11.10	0.009
Sylhet	609141	Gowainghat	11.20	0.010
Sylhet	609153	Jaintiapur	11.50	0.011
Sylhet	609159	Kanaighat	11.90	0.010
Sylhet	609160	Osmaninagar	10.80	0.011
Sylhet	609162	Sylhet Sadar	10.70	0.007
Sylhet	609194	Zakiganj	11.30	0.011

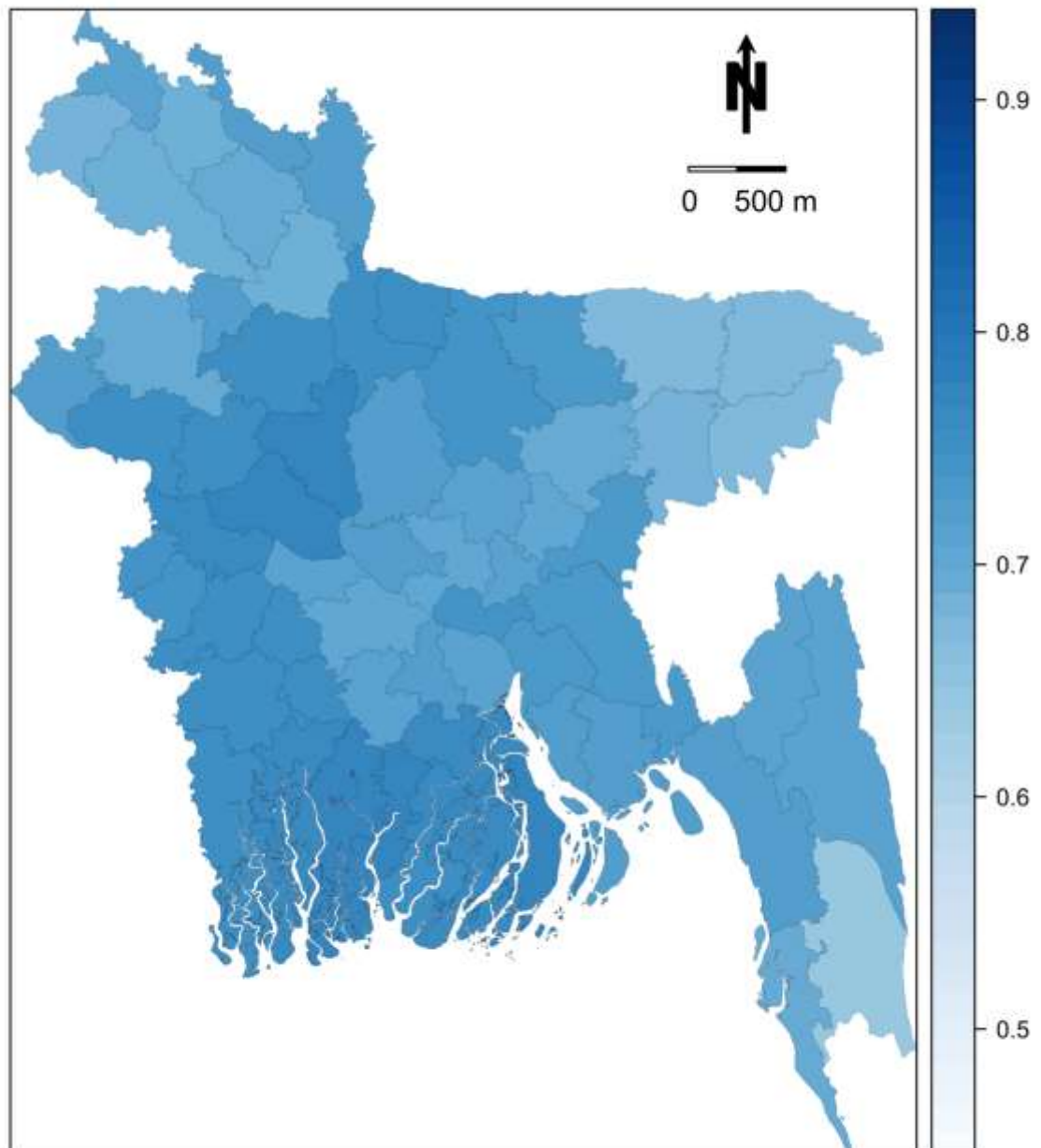
*Note: NA means not available. NA- for the upazila whose codes are not available in the census and we cannot generate its SAE estimates.*

## D1: Small-Area MAPS at District Level

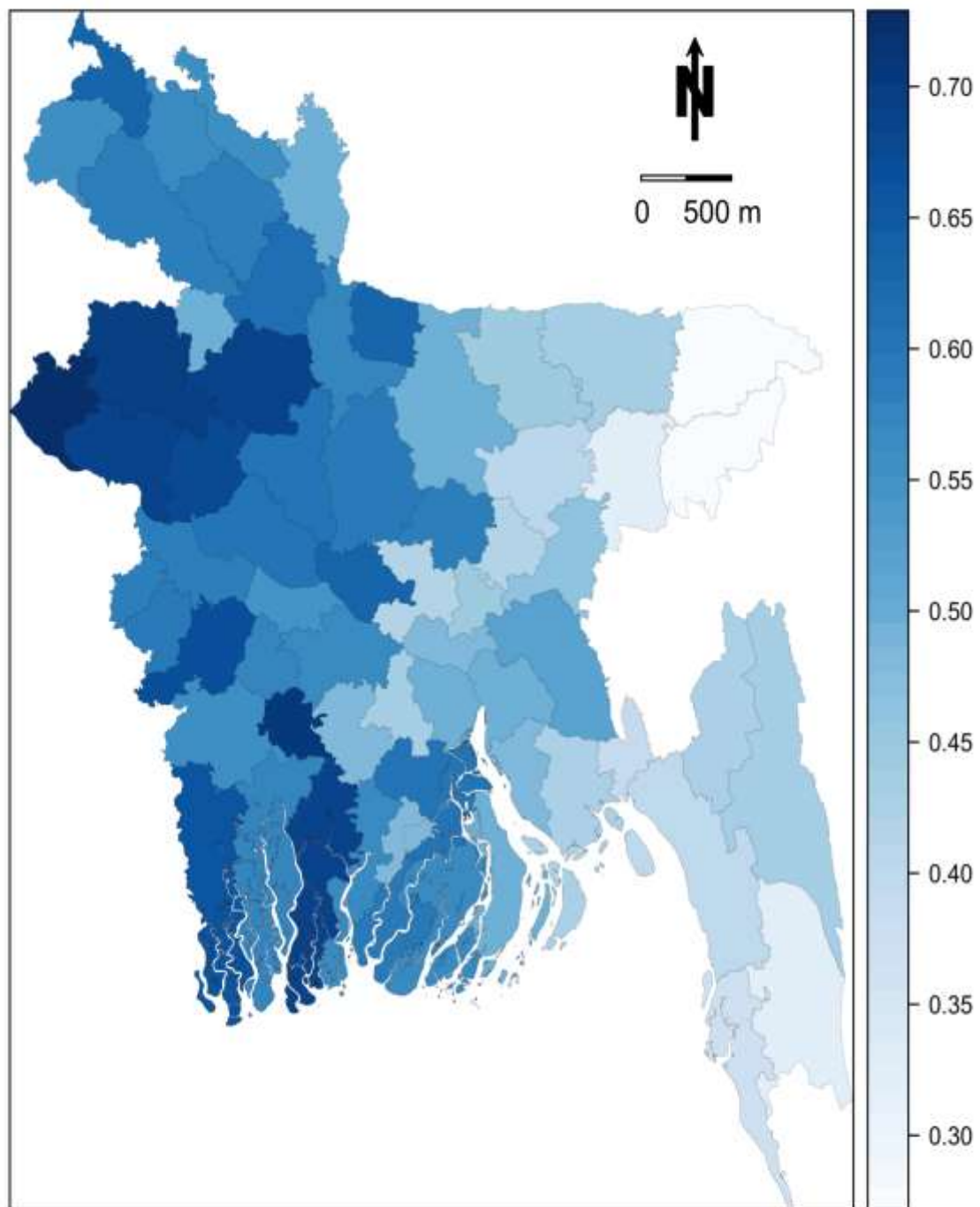
### Participation in Organized Learning (Direct)



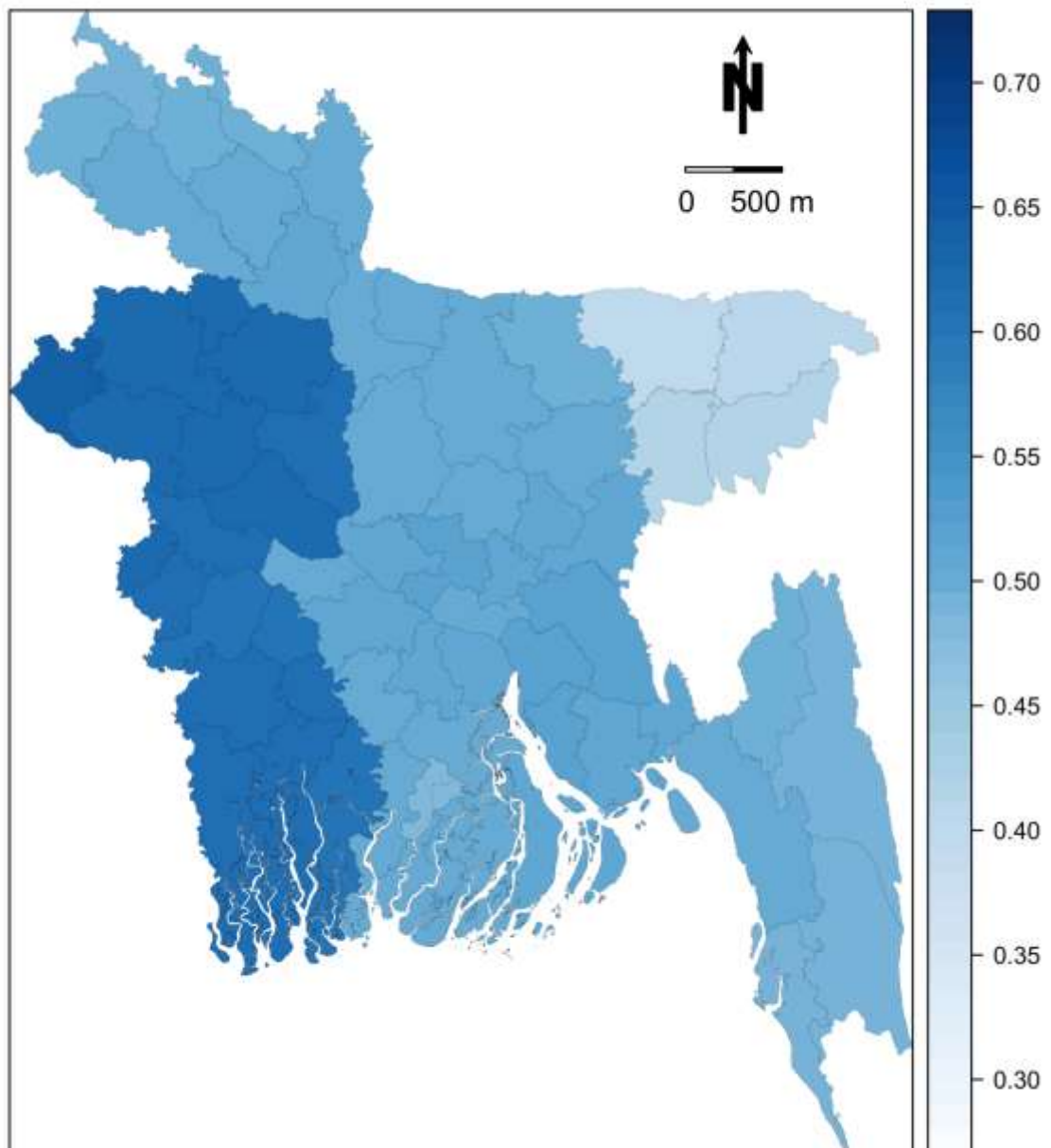
## Participation in Organized Learning (SAE)



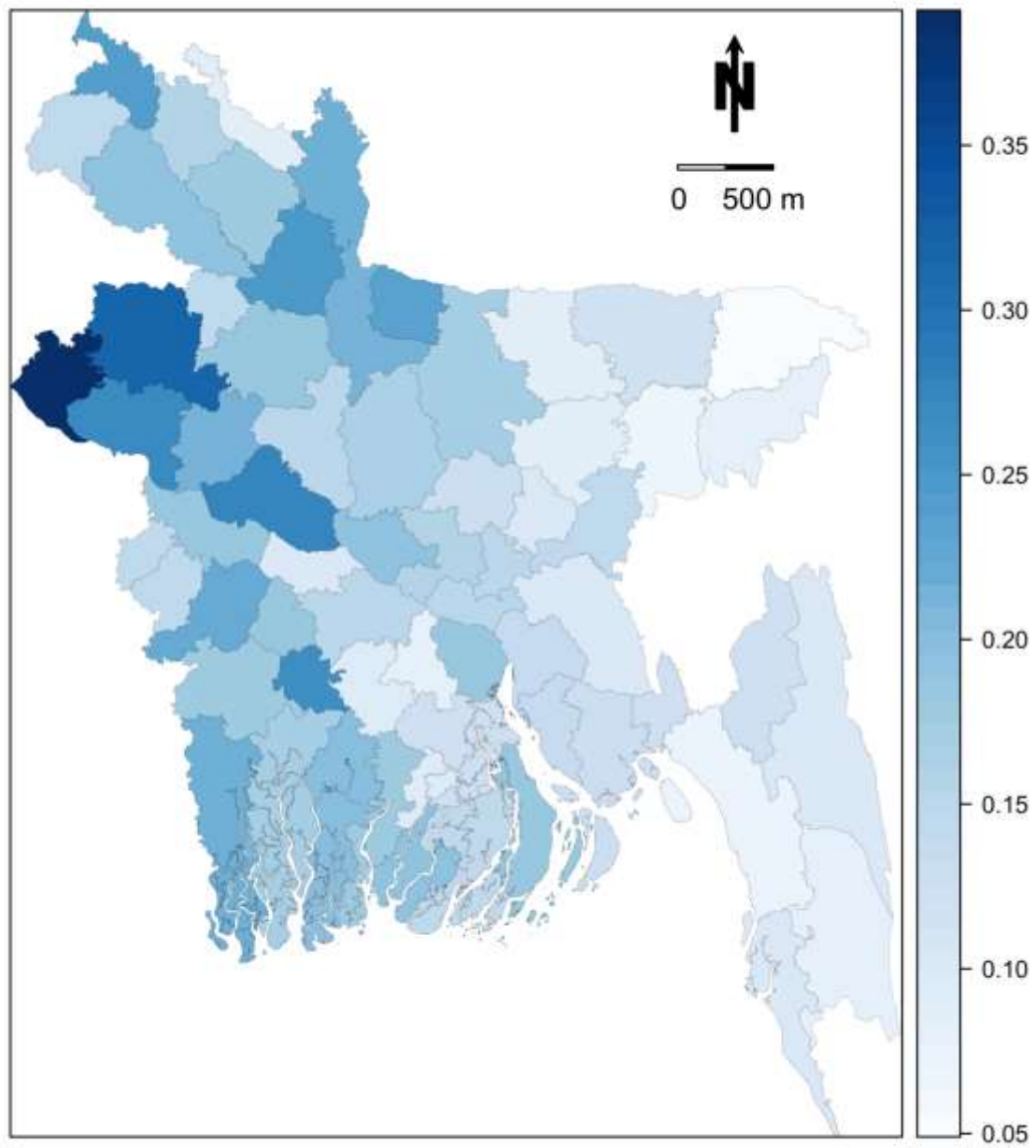
### Child Marriage Before Age 18 (Direct)



## Child Marriage Before Age 18 (SAE)

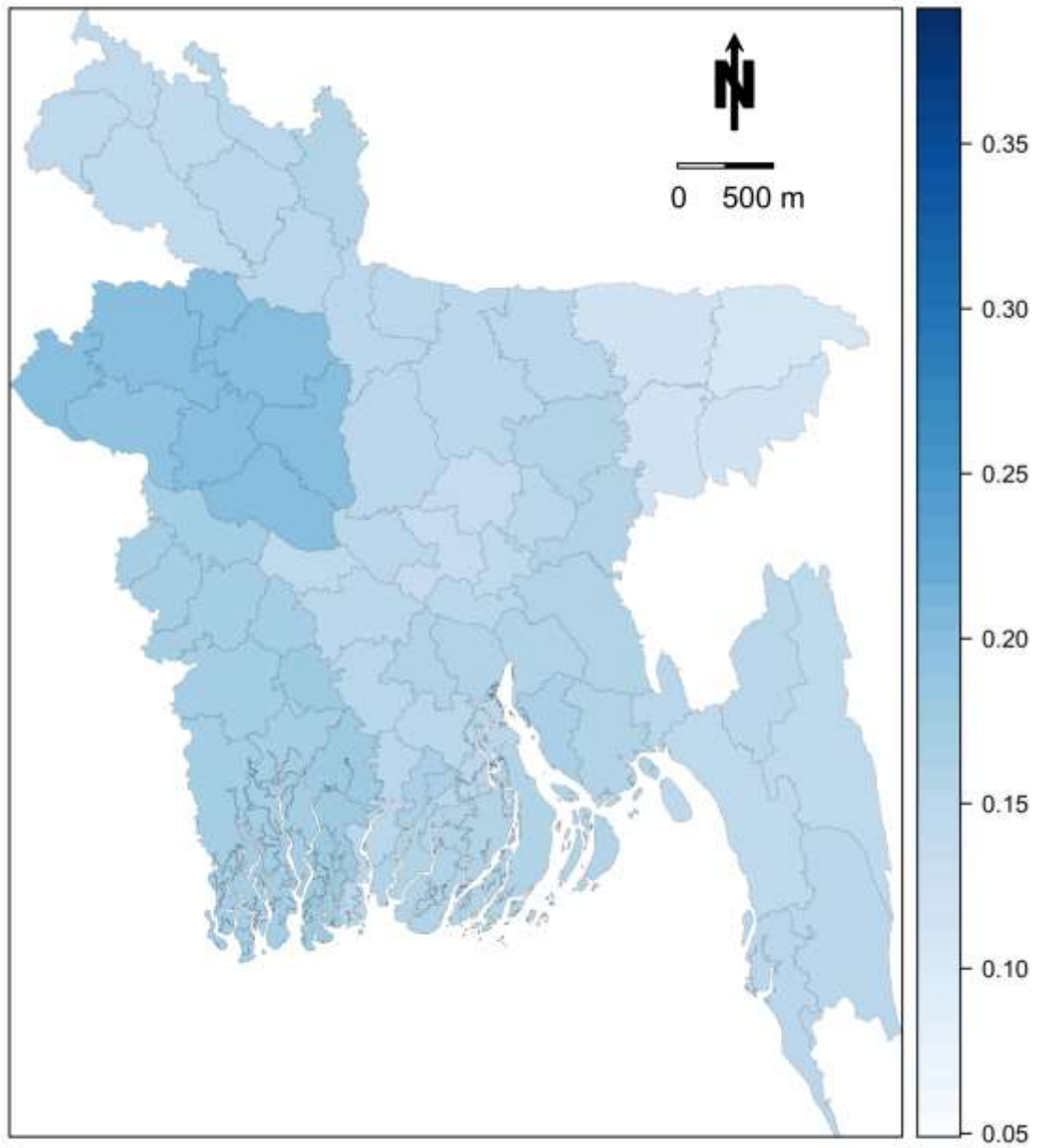


### Child Marriage Before Age 15 (Direct)





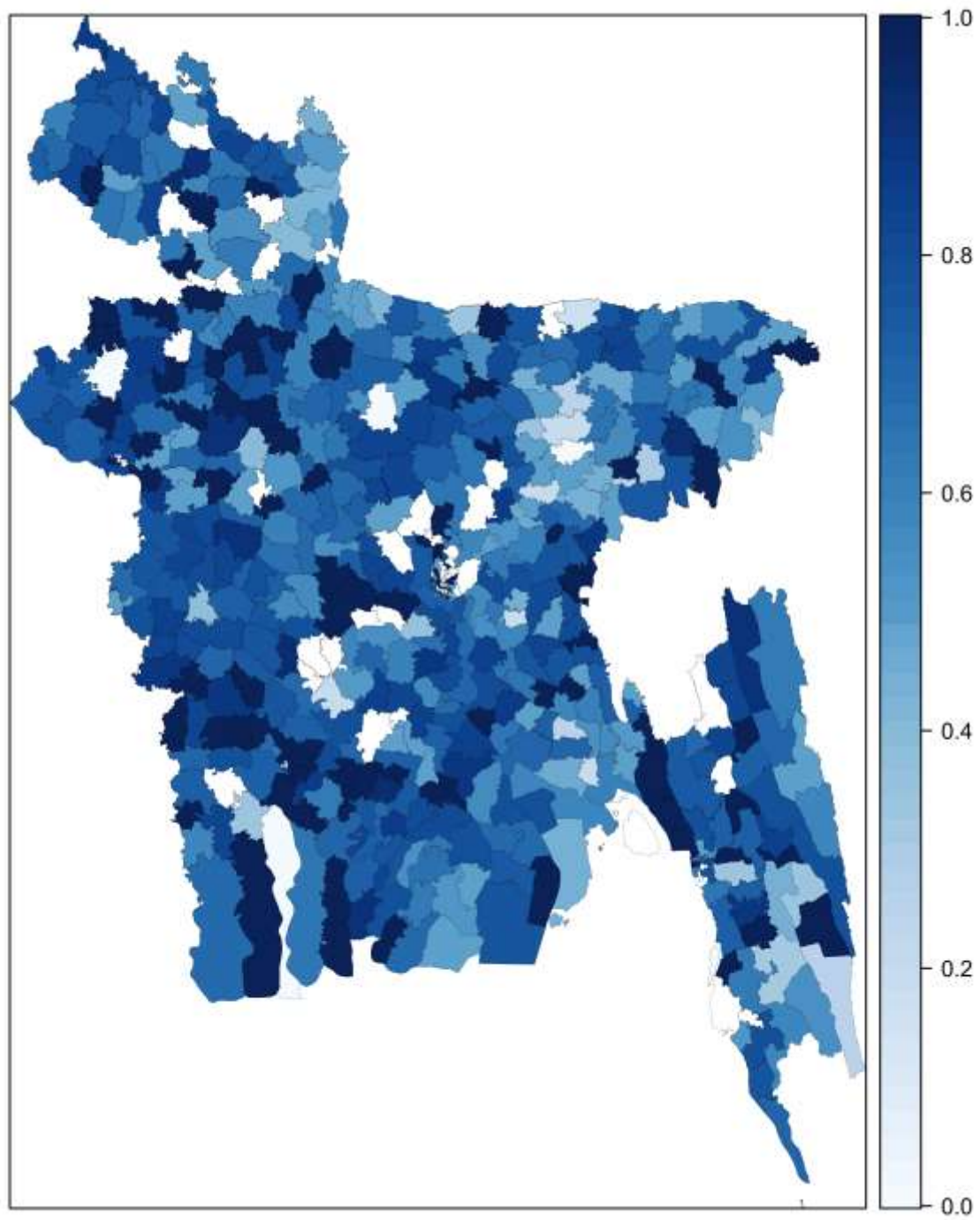
## Child Marriage Before Age 15 (SAE)



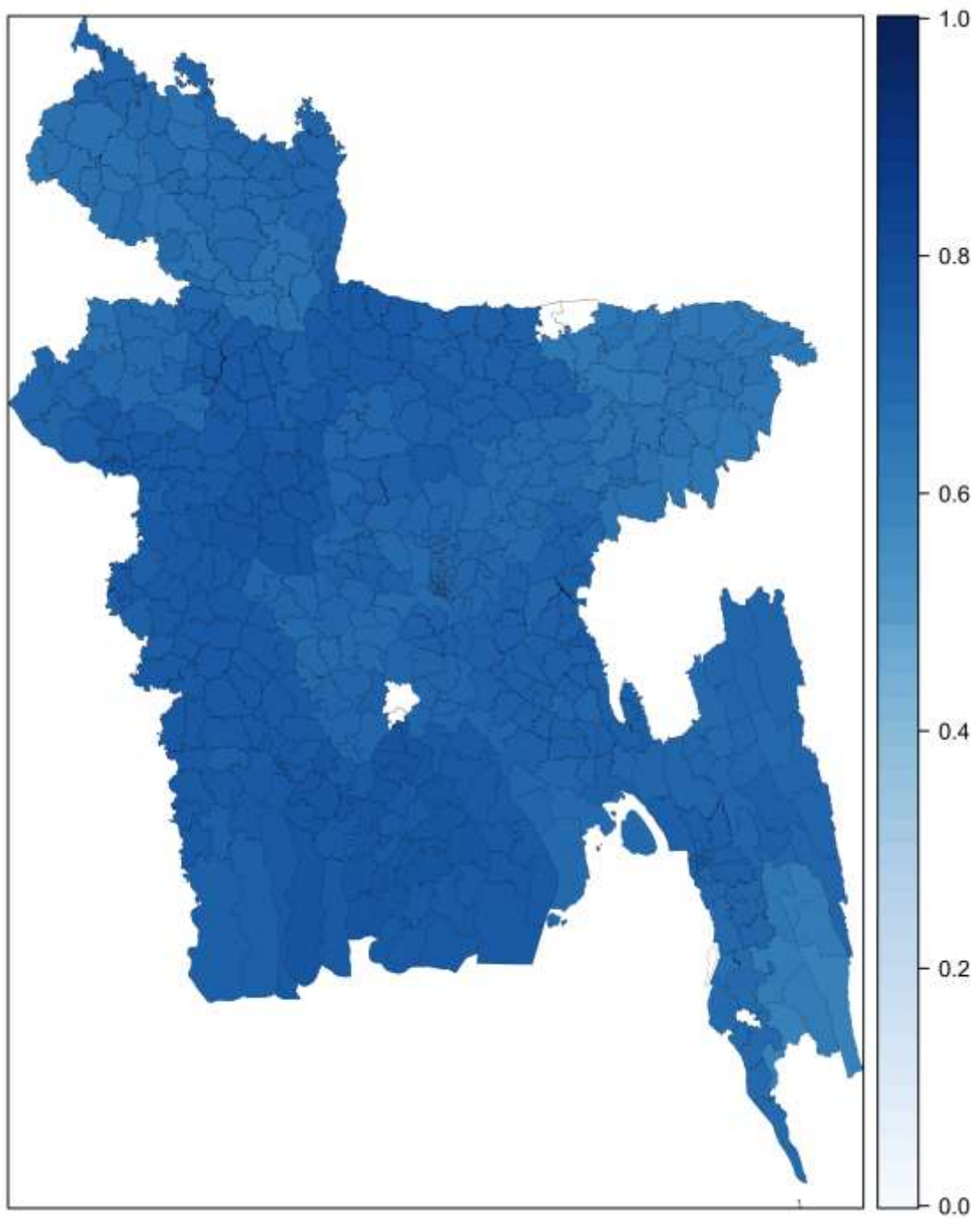
## D2. Maps at Small Area Level

Map of the administrative units including upazila boundaries, and maps of population density and density of children under five years of age.

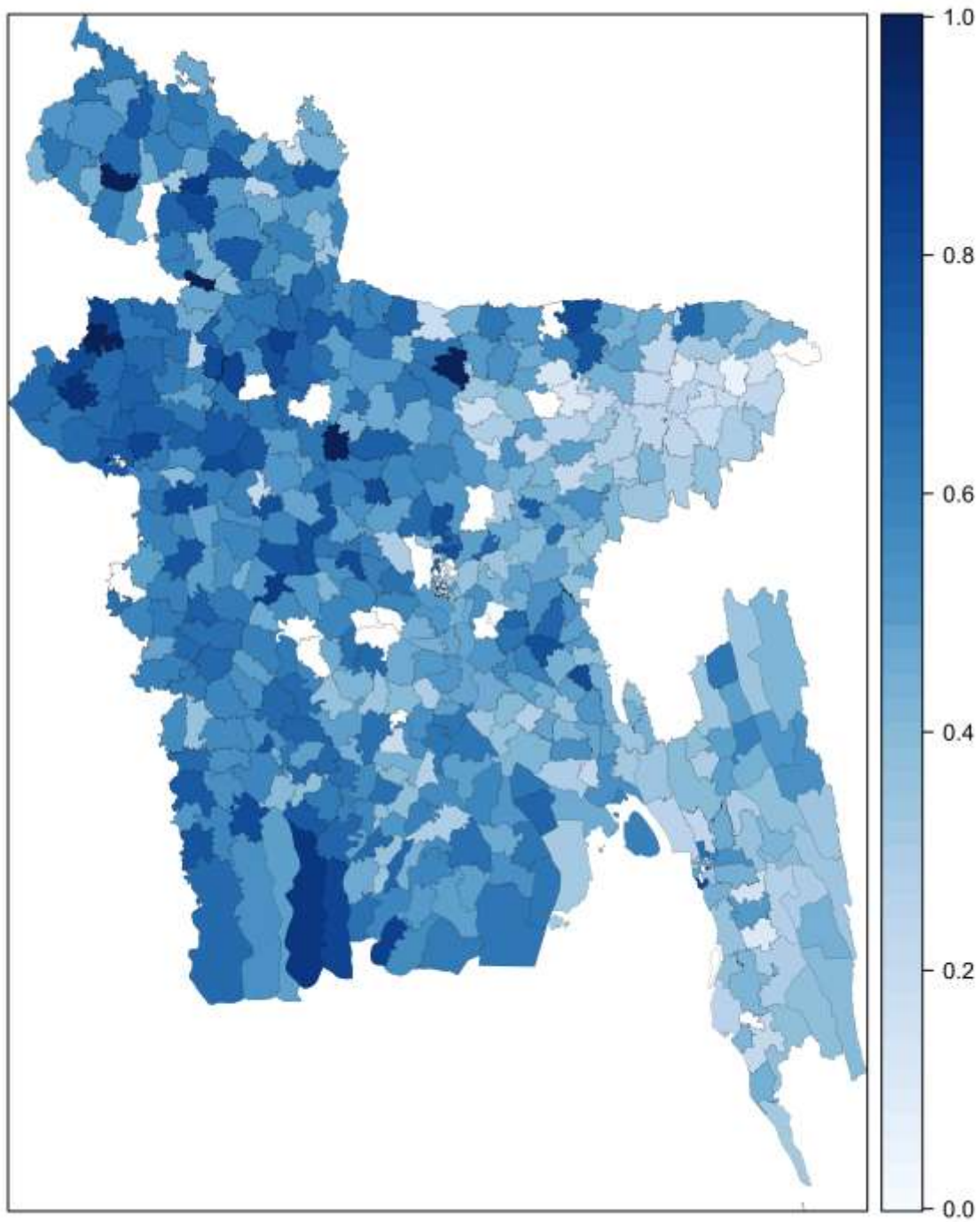
### Participation in Organized Learning (Direct)



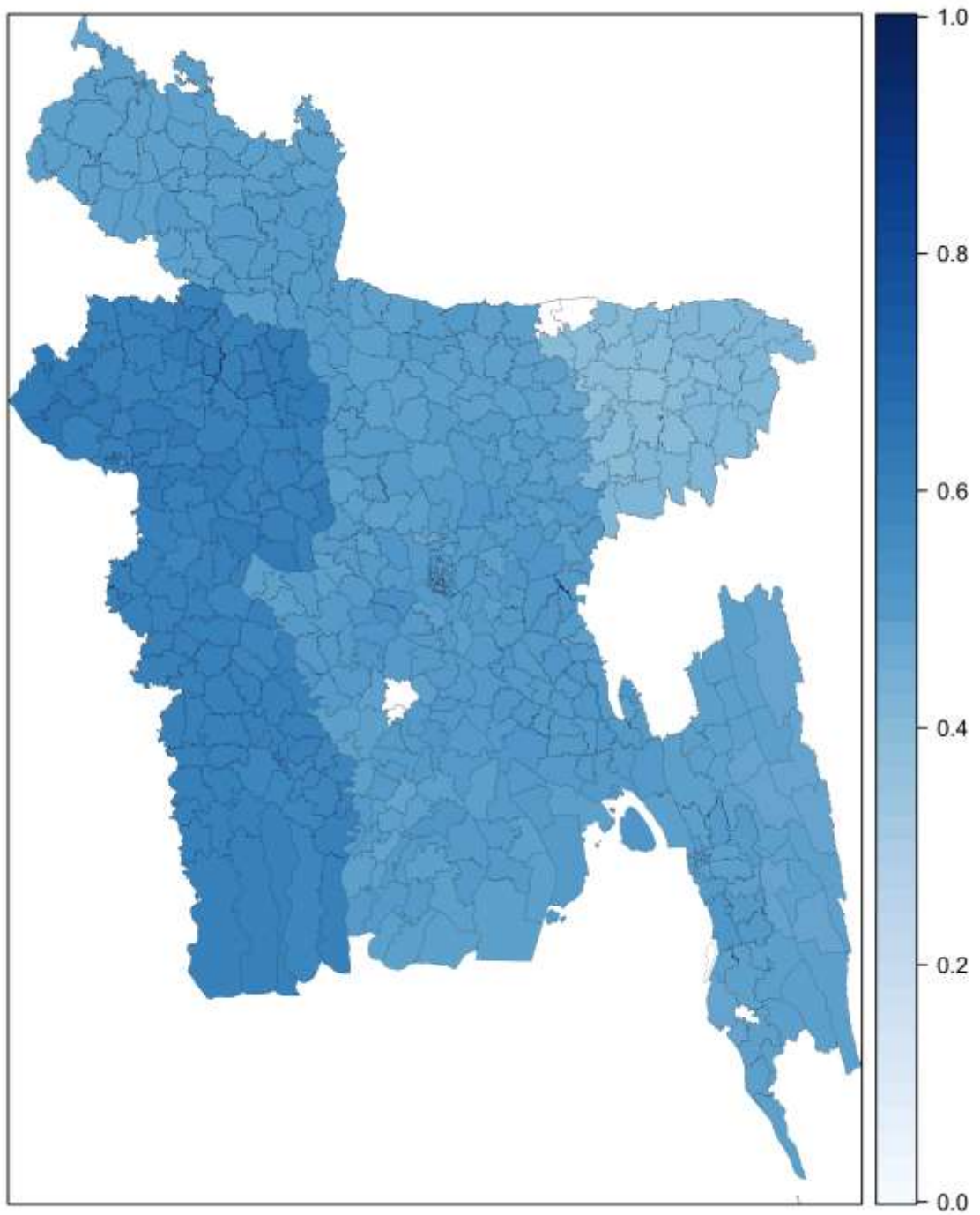
## Participation in Organized Learning (SAE)



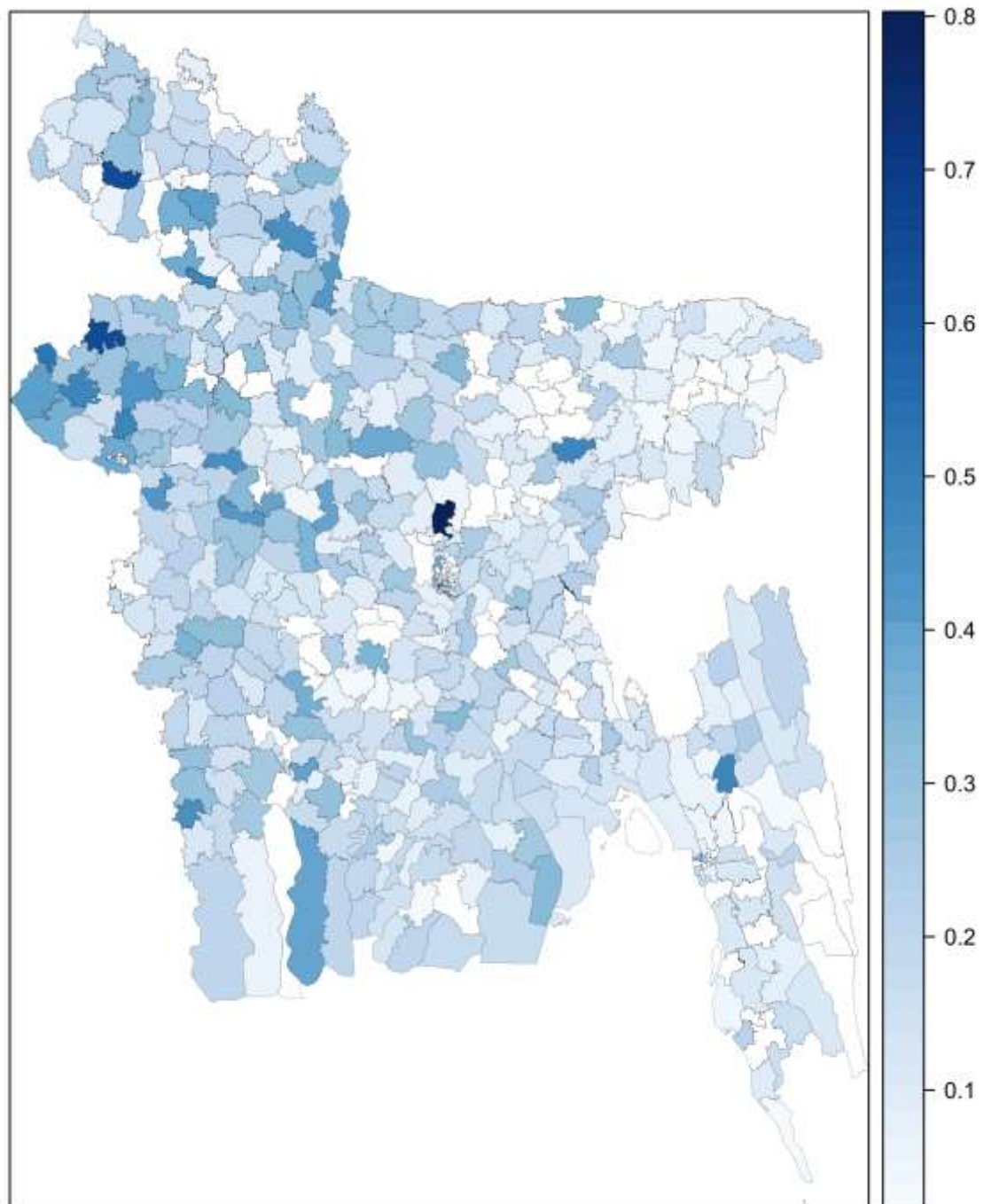
**Child Marriage Before Age 18 (Direct)**



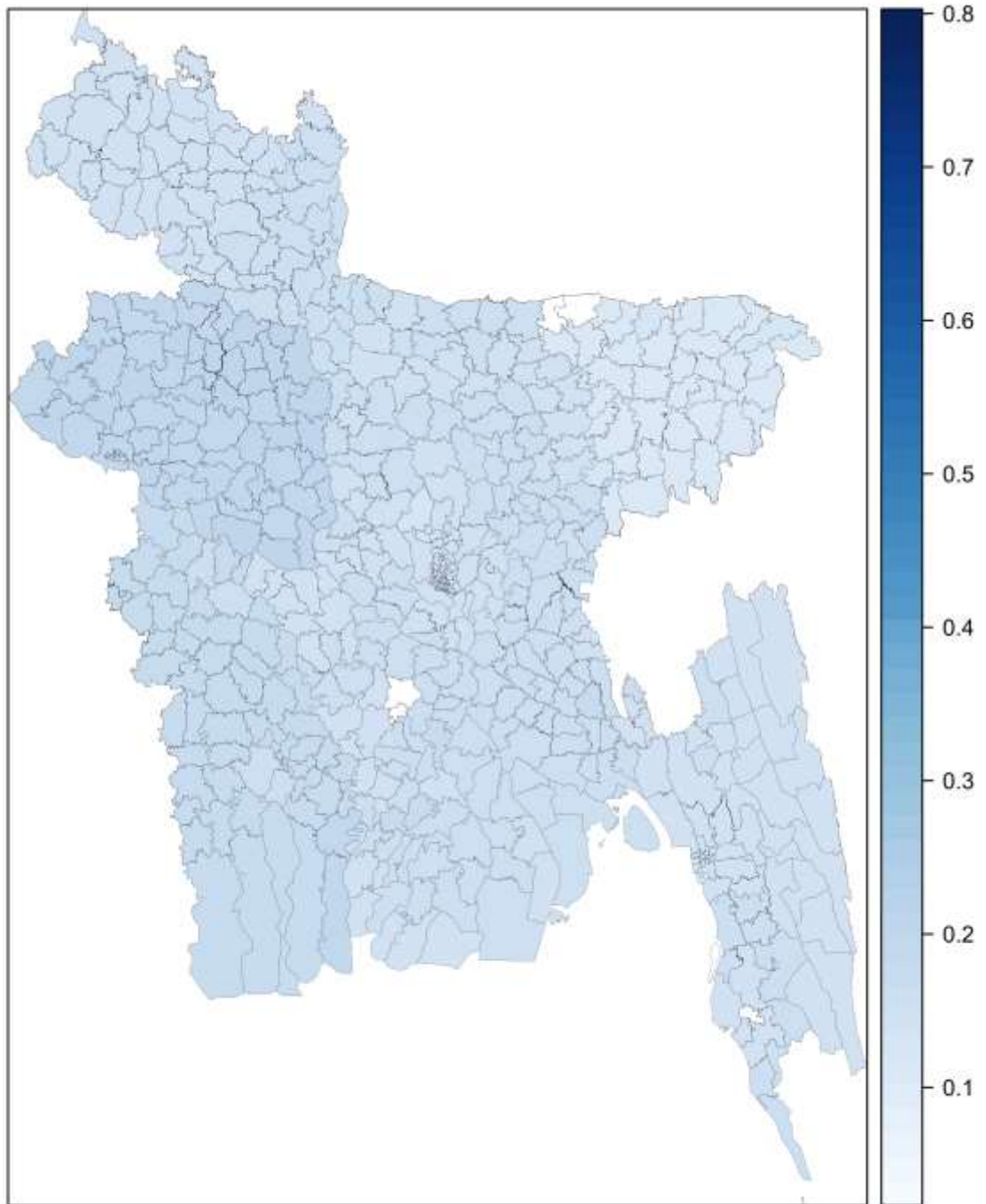
## Child Marriage Before Age 18 (SAE)



### Child Marriage Before Age 15 (Direct)



## Child Marriage Before Age 15 (SAE)



## E. Committees Involved

### Programme Implementation Committee (PIC)

SL No.	Name, Designation and Organization (Not According to the Seniority)	Committee Designation
1.	Director General, Bangladesh Bureau of Statistics (BBS)	Chairperson
2.	Additional Secretary (Admin.), Statistics and informatics Division	Member
3.	Deputy Director General, Bangladesh Bureau of Statistics (BBS)	Member
4.	Line Director, Maternal, Neo natal, Child & Adolescent Health, DG Health	Member
5.	Director (Research), National Institute of Population Research and Training (NIPORT)	Member
6.	Director, FA & MIS, BBS	Member
7.	Deputy Secretary (SDG Cell), Statistics and Informatics Division	Member
8.	Deputy Secretary (Budget), Statistics and Informatics Division	Member
9.	Prof. Muhammad Shuaib, Institute of Statistical Research and Training, Dhaka University	Member
10.	Director, Institute of Statistical Research and Training, Dhaka University	Member
11.	Director, Institute of Nutrition and Food Science, Dhaka university	Member
12.	Chairman, Department of Population Science, Dhaka University	Member
13.	Statistics and Monitoring Specialist, UNICEF Bangladesh	Member
14.	Representative, Department of Women and Children Affairs	Member
15.	Representative, Department of Social Services	Member
16.	Representative, Department of Public Health Engineering	Member
17.	Representative, Directorate of Primary Education	Member
18.	Representative, Department of Labour	Member
19.	Chief, Population Planning and Research (PPR), UNFPA	Member
20.	Mr. Md. Sirajul Islam, Emeritus Scientist, ICDDR'B	Member
21.	Director, Demography and Health Wing, BBS and Focal Point Officer, Multiple Indicator Cluster Survey (MICS) 2018-19	Member - Secretary



### Report Review Committee

SL No.	Name, Designation and Organization (Not According to the Seniority)	Committee Designation
1.	Dr. Md. Moinul Hoque Anshary Additional Secretary (Informatics), Statistics and Informatics Division	Chairperson
2.	Mr. Debdulal Bhattacharjee Joint Secretary (Budget, Financial Management & Audit and ICT) Statistics and Informatics Division	Member
3.	Mr. Mahmudur Rahman Joint Secretary (Informatics), Statistics and Informatics Division	Member
4.	Ms. Jasmin Akter Deputy Secretary (Development-2), Statistics and Informatics Division	Member
5.	Ms. Salma Pervin Deputy Secretary (Admin-4 Branch ) Statistics and Informatics Division	Member
6.	Mr. Md. Azad Jahan Deputy Secretary (Informatics-1), Statistics and Informatics Division	Member
7.	Mr. Kalachand Sarker Deputy Secretary (Informatics-3), Statistics and Informatics Division	Member
8.	Mr. Md. Azgar Ali Deputy Director (RDP Section), FA & MIS Wing, BBS	Member
9.	Md. Alimul Azim Accounts Officer, Accounts Section, Statistics and Informatics Division	Member
10.	Mr. Kazi Tofayel Hossain Deputy Secretary (Informatics-2), Statistics and Informatics Division	Member Secretary

## Editor's Forum

<b>SL No.</b>	<b>Name, Designation and Organization (Not According to the Seniority)</b>	<b>Committee Designation</b>
1.	Mr. Parimal Chandra Bose, Deputy Director General, BBS	Convener
2.	Mr. Alauddin Al Azad, Director, Agriculture Wing, BBS	Member
3.	Mr. Md. Mashud Alam, Director, Demography and Health Wing, BBS	Member
4.	Mr. Kabir Uddin Ahmed, Director, Computer Wing, BBS	Member
5.	Mr. Md. Emdadul Haque, Director, Census Wing, BBS	Member
6.	Mr. Md. Dilder Hossain, Project Director, NSDS Project, BBS	Member
7.	Mr. Muhammad Atikul Kabir, Director, Industry and Labor Wing, BBS	Member
8.	Mr. Md. Abdur Rob Dhali, Director, BBS	Member
9.	Mr. H. M. Firoz, Director (In charge), FA & MIS Wing, BBS	Member
10.	Mr. Md. Rafiqul Islam, Director (In charge), National Accounting Wing, BBS	Member
11.	Mr. Md. Alamgir Hossen, Project Director, SVRS in Digital Platform Project, BBS	Member
12.	Mr. Mohiuddin Ahmed <i>MPH</i> , Project Director, HIES Project, BBS	Member
13.	Mr. Ziauddin Ahmed, Director, Statistical Staff Training Institute, BBS	Member Secretary

### Working Committee

<b>SL No.</b>	<b>Name, Designation and Organization (Not According to the Seniority)</b>	<b>Committee Designation</b>
1.	Mr. Md. Mashud Alam, Director, Demography and Health Wing, BBS	Chairperson
2.	Mr. Kabir Uddin Ahmed, Director, Computer Wing, BBS	Member
3.	Mr. SK Shamsur Rahman, Deputy Secretary, Statistics and Informatics Division	Member
4.	Mr. Iftekhairul Karim, Deputy Director, Demography and Health Wing, BBS	Member
5.	Mr. Md. Alamgir Hossen, Deputy Director, Demography and Health Wing, BBS	Member
6.	Mr. Mahboob-E-Alam, Statistics and Monitoring Specialist, UNICEF Bangladesh	Member
7.	Ms. Asma Akhter, Deputy Director, Demography and Health Wing, BBS	Member
8.	Mr. Rashed-E- Mastahub, Deputy Director, Census Wing, BBS	Member
9.	Ms. Nayma Rahman, Deputy Director, Demography and Health Wing, BBS	Member
10.	Mr. Md. Mahabub Alam, Statistical Officer, Demography and Health Wing, BBS	Member
11.	Mr. Md. Sadequr Rahman, Statistical Officer, Demography and Health Wing, BBS	Member
12.	Mr. S. M Amimul Ehasan, Statistical Officer, Demography and Health Wing, BBS	Member
13.	Mr. Shakil Ahmed, Research Officer, UNICEF Bangladesh	Member
14.	Ms. Reshma Jesmin, Deputy Director, Demography and Health Wing, BBS	Member - Secretary

For further information on this Report please contact:

Demography and Health Wing  
Bangladesh Bureau of Statistics (BBS)  
Statistics and Informatics Division (SID)  
Parishankhyan Bhaban  
E-27/A, Agargaon, Dhaka-1207  
Phone (Office): 02-55007058  
E-mail: [mashud2003@yahoo.com](mailto:mashud2003@yahoo.com)  
Website: [www.bbs.gov.bd](http://www.bbs.gov.bd)

Social Policy, Evaluation, Analytics and Research Section (SPEAR)  
UNICEF Bangladesh  
UNICEF House, Plot E-30  
Syed Mahbub Morshed Avenue, Sher-e-Bangla Nagar  
Dhaka 1207, Bangladesh  
Telephone (Office): +880 9604107140  
Website: [www.unicef.org](http://www.unicef.org)